

Data Path : Z:\pestpcbsrv\HPCHEM1\FID\_D\Data\FD042419AR\  
 Data File : FD029047.D  
 Signal(s) : FID2B.CH  
 Acq On : 25 Apr 2019 00:16  
 Operator : AJ\SJ  
 Sample : K2542-06  
 Misc :  
 ALS Vial : 59 Sample Multiplier: 1

Instrument :  
 FID\_D  
 ClientSampleId :

Integration File: autoint1.e  
 Quant Time: Apr 25 03:24:03 2019  
 Quant Method : Z:\pestpcbsrv\HPCHEM1\FID\_D\methods\Aromatic EPH 041919.M  
 Quant Title : GC Extractables  
 QLast Update : Fri Apr 19 05:29:12 2019  
 Response via : Initial Calibration  
 Integrator: ChemStation 6890 Scale Mode: Large solvent peaks clipped

Volume Inj. : 1 µl  
 Signal Phase : Rxi-1ms  
 Signal Info : 20M x 0.18mm x 0.18µm

Compound	R.T.	Response	Conc Units
System Monitoring Compounds			
4) S 2-Bromonaphthalene (S...	7.089	4256478	42.674 ug/ml
Spiked Amount	50.000	Recovery =	85.35%
6) S 2-Fluorobiphenyl (SURR)	7.956	2785152	40.642 ug/ml
Spiked Amount	50.000 Range 0 - 131	Recovery =	81.28%
11) S ortho-Terphenyl (SURR)	10.993	3128859	29.367 ug/ml
Spiked Amount	50.000	Recovery =	58.73%

Target Compounds

(f)=RT Delta > 1/2 Window

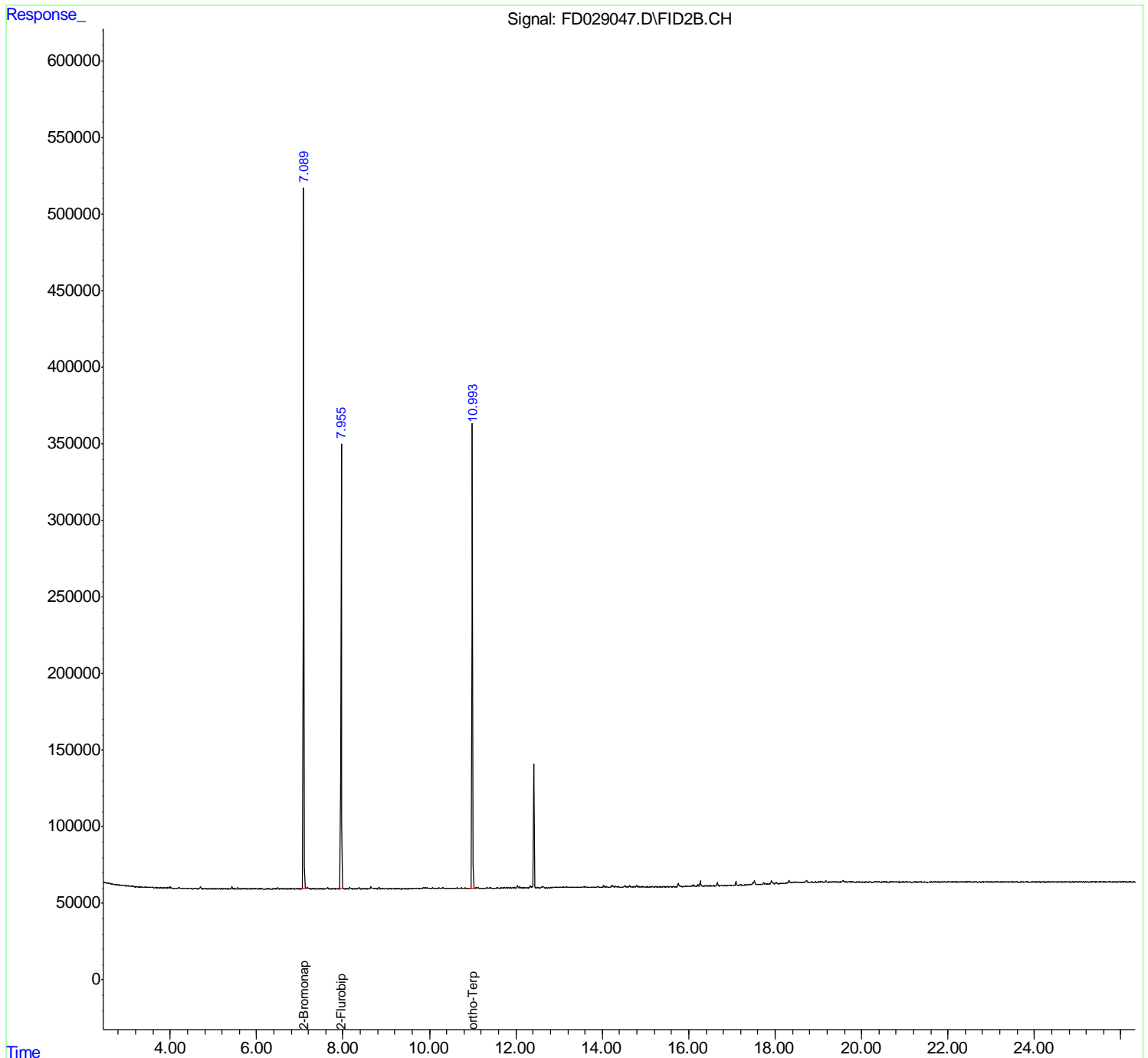
(m)=manual int.

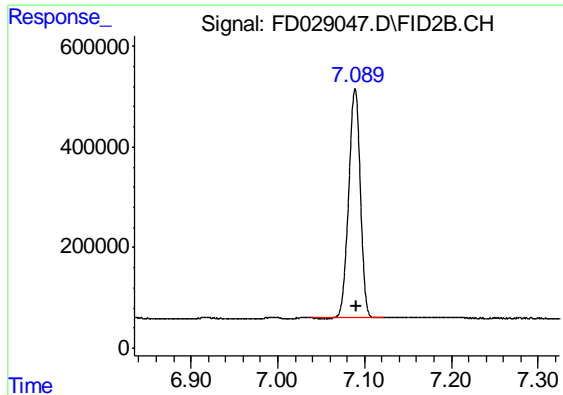
Data Path : Z:\pestpcbsrv\HPCHEM1\FID\_D\Data\FD042419AR\  
 Data File : FD029047.D  
 Signal(s) : FID2B.CH  
 Acq On : 25 Apr 2019 00:16  
 Operator : AJ\SJ  
 Sample : K2542-06  
 Misc :  
 ALS Vial : 59 Sample Multiplier: 1

Instrument :  
 FID\_D  
 ClientSampleId :

Integration File: autoint1.e  
 Quant Time: Apr 25 03:24:03 2019  
 Quant Method : Z:\pestpcbsrv\HPCHEM1\FID\_D\methods\Aromatic EPH 041919.M  
 Quant Title : GC Extractables  
 QLast Update : Fri Apr 19 05:29:12 2019  
 Response via : Initial Calibration  
 Integrator: ChemStation 6890 Scale Mode: Large solvent peaks clipped

Volume Inj. : 1 µl  
 Signal Phase : Rxi-1ms  
 Signal Info : 20M x 0.18mm x 0.18µm

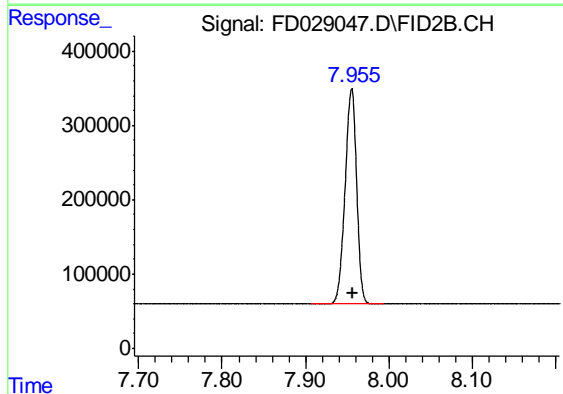




#4 2-Bromonaphthalene (SURR)

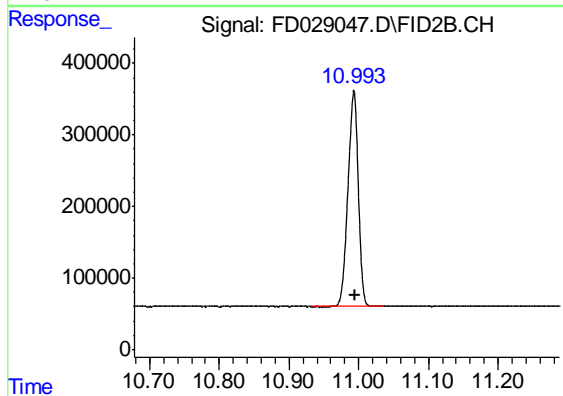
R.T.: 7.089 min  
Delta R.T.: -0.001 min  
Response: 4256478  
Conc: 42.67 ug/ml

Instrument :  
FID\_D  
ClientSampled :



#6 2-Fluorobiphenyl (SURR)

R.T.: 7.956 min  
Delta R.T.: -0.002 min  
Response: 2785152  
Conc: 40.64 ug/ml



#11 ortho-Terphenyl (SURR)

R.T.: 10.993 min  
Delta R.T.: -0.002 min  
Response: 3128859  
Conc: 29.37 ug/ml