

Data Path : Z:\pestpcbsrv\HPCHEM1\FID_D\Data\FD042419AR\
Data File : FD029056.D
Signal(s) : FID2B.CH
Acq On : 25 Apr 2019 5:37
Operator : AJ\SJ
Sample : I.BLK
Misc :
ALS Vial : 51 Sample Multiplier: 1

Instrument :
FID_D
ClientSampleId :

Integration File: autoint1.e
Quant Time: Apr 25 06:35:25 2019
Quant Method : Z:\pestpcbsrv\HPCHEM1\FID_D\methods\Aromatic EPH 041919.M
Quant Title : GC Extractables
QLast Update : Fri Apr 19 05:29:12 2019
Response via : Initial Calibration
Integrator: ChemStation 6890 Scale Mode: Large solvent peaks clipped

Volume Inj. : 1 µl
Signal Phase : Rxi-1ms
Signal Info : 20M x 0.18mm x 0.18µm

Compound	R.T.	Response	Conc Units
----------	------	----------	------------

System Monitoring Compounds

Target Compounds

(f)=RT Delta > 1/2 Window

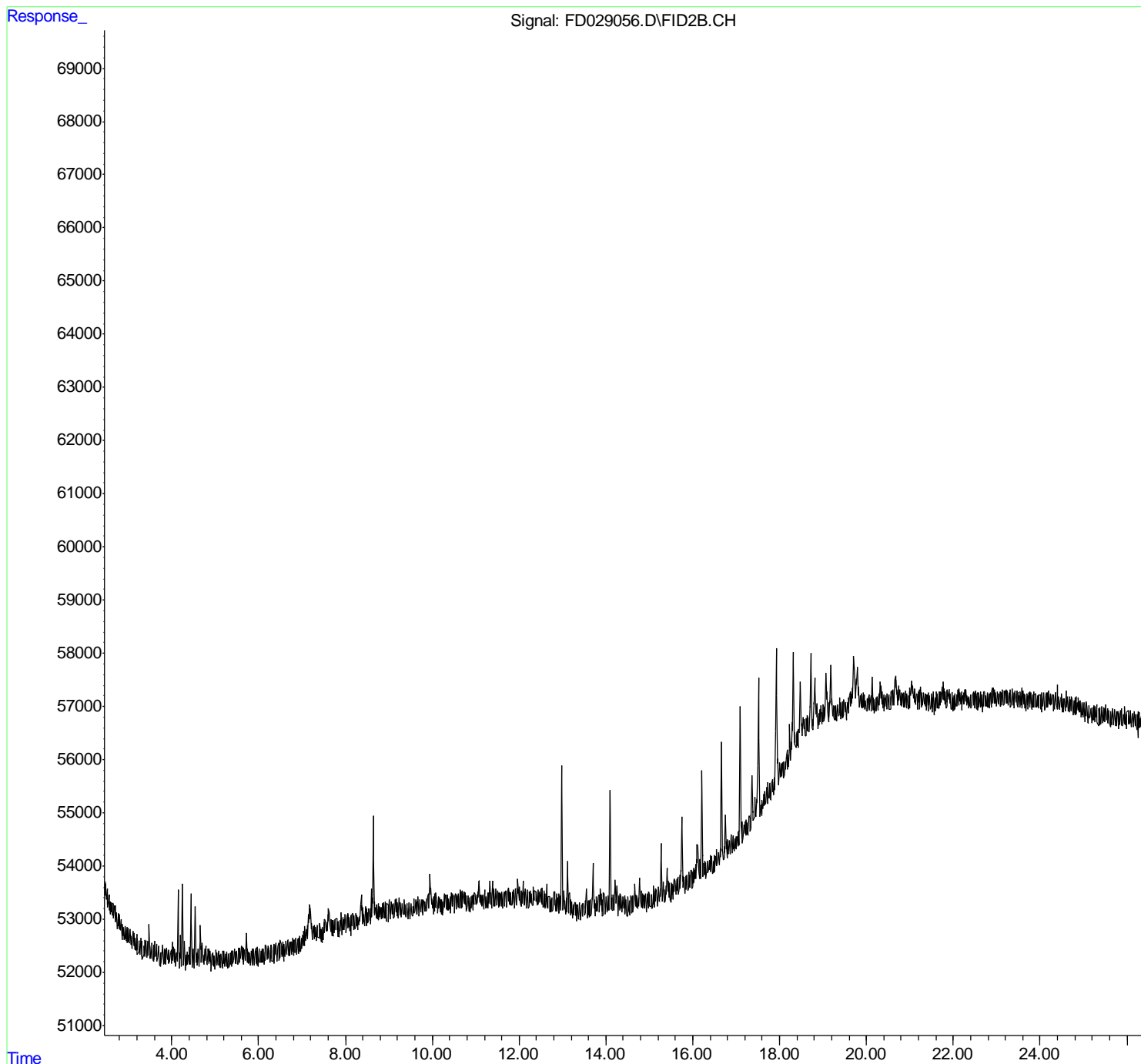
(m)=manual int.

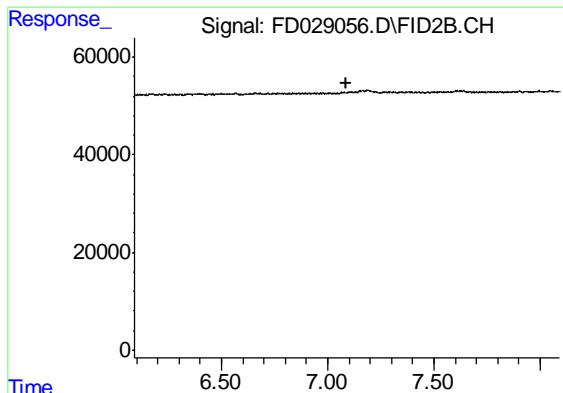
Data Path : Z:\pestpcbsrv\HPCHEM1\FID_D\Data\FD042419AR\
Data File : FD029056.D
Signal(s) : FID2B.CH
Acq On : 25 Apr 2019 5:37
Operator : AJ\SJ
Sample : I.BLK
Misc :
ALS Vial : 51 Sample Multiplier: 1

Instrument :
FID_D
ClientSampleId :

Integration File: autoint1.e
Quant Time: Apr 25 06:35:25 2019
Quant Method : Z:\pestpcbsrv\HPCHEM1\FID_D\methods\Aromatic EPH 041919.M
Quant Title : GC Extractables
QLast Update : Fri Apr 19 05:29:12 2019
Response via : Initial Calibration
Integrator: ChemStation 6890 Scale Mode: Large solvent peaks clipped

Volume Inj. : 1 µl
Signal Phase : Rxi-1ms
Signal Info : 20M x 0.18mm x 0.18µm

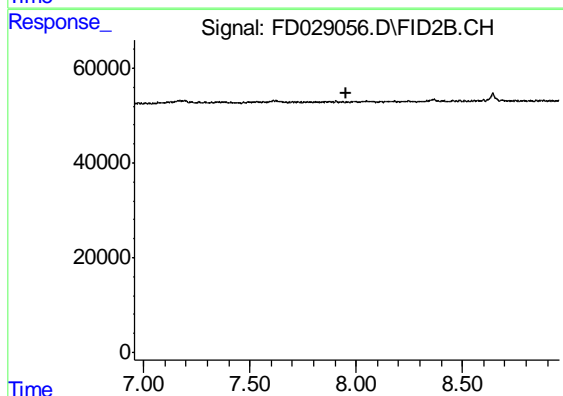




#4 2-Bromonaphthalene (SURR)

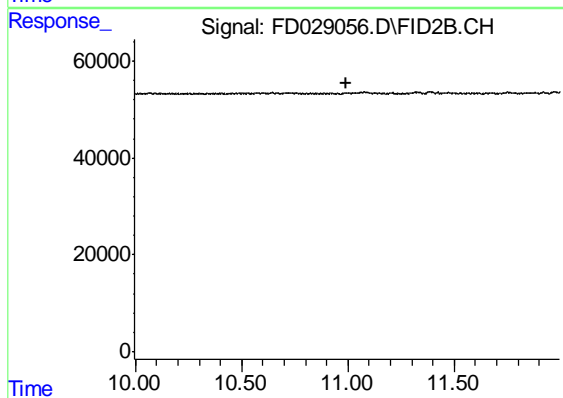
R.T.: 0.000 min
Exp R.T. : 7.091 min
Response: 0
Conc: N.D.

Instrument :
FID_D
ClientSampleId :



#6 2-Fluorobiphenyl (SURR)

R.T.: 0.000 min
Exp R.T. : 7.957 min
Response: 0
Conc: N.D.



#11 ortho-Terphenyl (SURR)

R.T.: 0.000 min
Exp R.T. : 10.995 min
Response: 0
Conc: N.D.