

Data Path : Z:\pestpcbsrv\HPCHEM1\FID_D\Data\FD042419AR\
 Data File : FD029058.D
 Signal(s) : FID2B.CH
 Acq On : 25 Apr 2019 9:54
 Operator : AJ\SJ
 Sample : PB119132BL
 Misc :
 ALS Vial : 66 Sample Multiplier: 1

Instrument :
 FID_D
 ClientSampleId :

Integration File: autoint1.e
 Quant Time: Apr 25 12:08:54 2019
 Quant Method : Z:\pestpcbsrv\HPCHEM1\FID_D\methods\Aromatic EPH 041919.M
 Quant Title : GC Extractables
 QLast Update : Fri Apr 19 05:29:12 2019
 Response via : Initial Calibration
 Integrator: ChemStation 6890 Scale Mode: Large solvent peaks clipped

Volume Inj. : 1 µl
 Signal Phase : Rxi-1ms
 Signal Info : 20M x 0.18mm x 0.18µm

Compound	R.T.	Response	Conc Units
System Monitoring Compounds			
4) S 2-Bromonaphthalene (S...	7.089	4600800	46.126 ug/ml
Spiked Amount	50.000	Recovery =	92.25%
6) S 2-Fluorobiphenyl (SURR)	7.954	2569878	37.500 ug/ml
Spiked Amount	50.000 Range 0 - 131	Recovery =	75.00%
11) S ortho-Terphenyl (SURR)	10.992	3595819	33.749 ug/ml
Spiked Amount	50.000	Recovery =	67.50%

Target Compounds

(f)=RT Delta > 1/2 Window

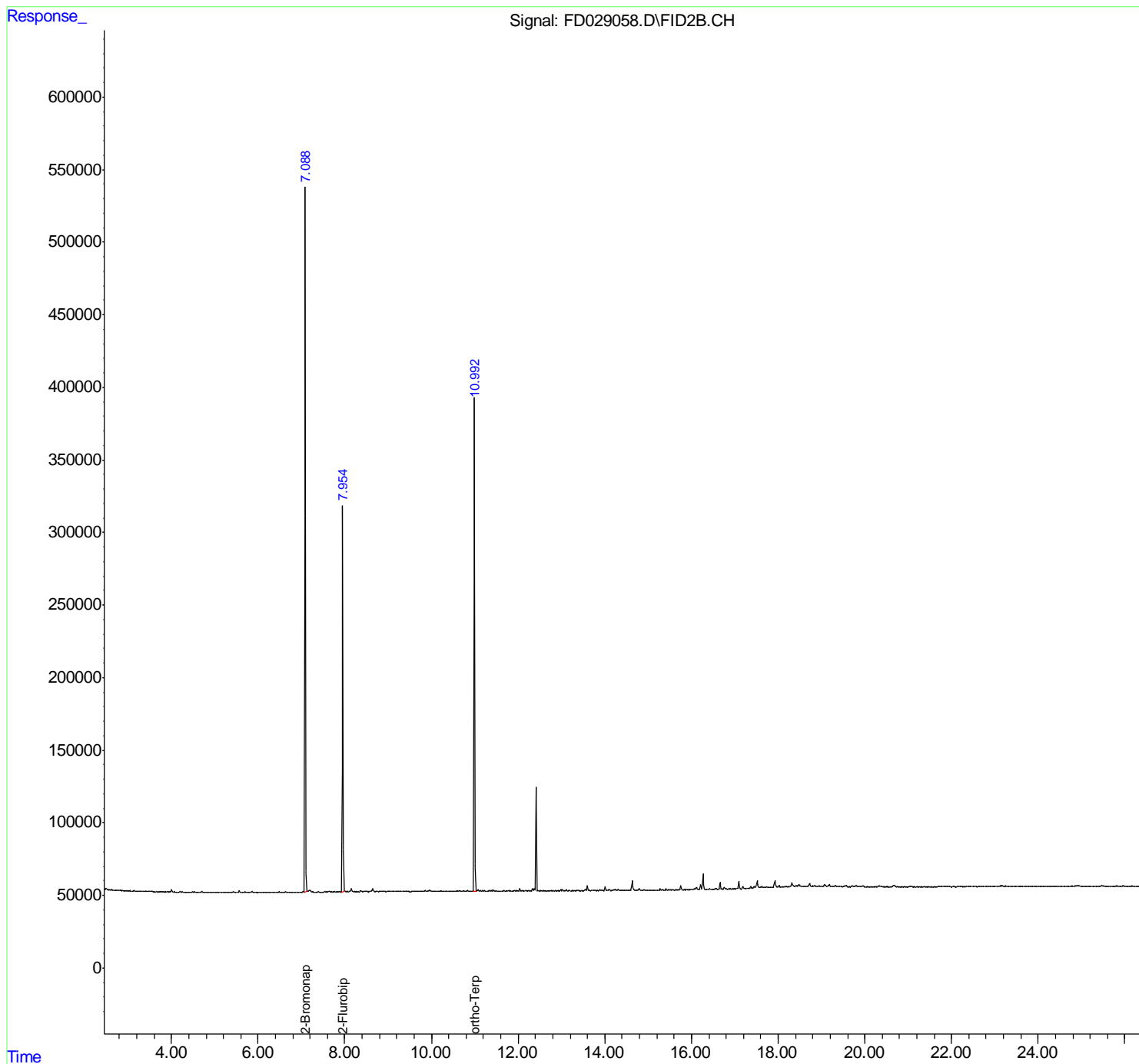
(m)=manual int.

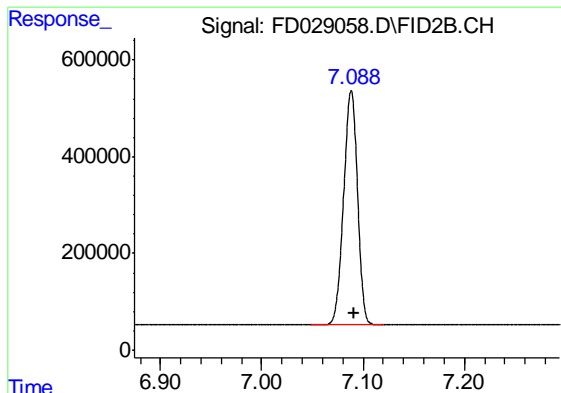
Data Path : Z:\pestpcbsrv\HPCHEM1\FID_D\Data\FD042419AR\
Data File : FD029058.D
Signal(s) : FID2B.CH
Acq On : 25 Apr 2019 9:54
Operator : AJ\SJ
Sample : PB119132BL
Misc :
ALS Vial : 66 Sample Multiplier: 1

Instrument :
FID_D
ClientSampled :

Integration File: autoint1.e
Quant Time: Apr 25 12:08:54 2019
Quant Method : Z:\pestpcbsrv\HPCHEM1\FID_D\methods\Aromatic EPH 041919.M
Quant Title : GC Extractables
QLast Update : Fri Apr 19 05:29:12 2019
Response via : Initial Calibration
Integrator: ChemStation 6890 Scale Mode: Large solvent peaks clipped

Volume Inj. : 1 µl
Signal Phase : Rxi-1ms
Signal Info : 20M x 0.18mm x 0.18µm

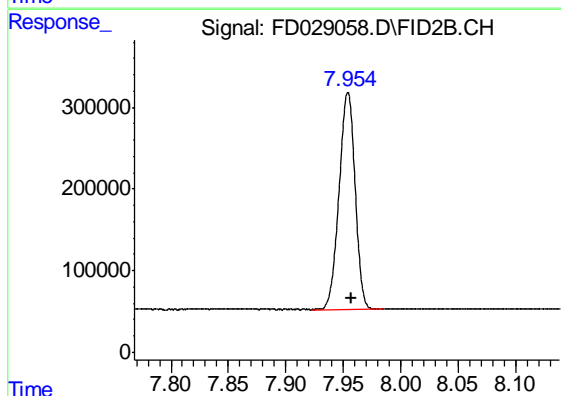




#4 2-Bromonaphthalene (SURR)

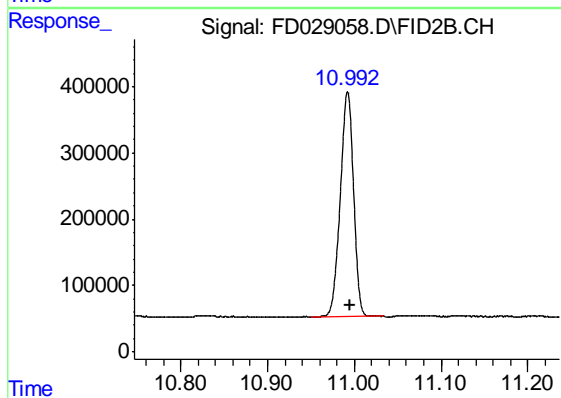
R.T.: 7.089 min
Delta R.T.: -0.002 min
Response: 4600800
Conc: 46.13 ug/ml

Instrument :
FID_D
ClientSampleId :



#6 2-Fluorobiphenyl (SURR)

R.T.: 7.954 min
Delta R.T.: -0.003 min
Response: 2569878
Conc: 37.50 ug/ml



#11 ortho-Terphenyl (SURR)

R.T.: 10.992 min
Delta R.T.: -0.002 min
Response: 3595819
Conc: 33.75 ug/ml