

Data Path : Z:\pestpcbsrv\HPCHEM1\FID_D\Data\FD042420AL\
 Data File : FD033220.D
 Signal(s) : FID2B.CH
 Acq On : 25 Apr 2020 23:50
 Operator : DD\AJ
 Sample : L2374-01
 Misc :
 ALS Vial : 73 Sample Multiplier: 1

Integration File: sample.E
 Quant Time: Apr 27 02:50:36 2020
 Quant Method : Z:\pestpcbsrv\HPCHEM1\FID_D\methods\Alaphatic EPH 040720.M
 Quant Title : GC Extractables
 QLast Update : Tue Apr 07 14:10:50 2020
 Response via : Initial Calibration
 Integrator: ChemStation 6890 Scale Mode: Large solvent peaks clipped

Volume Inj. : 1 ul
 Signal Phase : Rxi-1ms
 Signal Info : 20M x 0.18mm x 0.18um

Compound	R.T.	Response	Conc Units

System Monitoring Compounds			
9) S ortho-Terphenyl (SURR)	11.490	3132267	20.847 ug/ml
Spiked Amount	50.000	Recovery	= 41.69%
12) S 1-chlorooctadecane (S...	12.921	2725376	23.220 ug/ml
Spiked Amount	50.000	Recovery	= 46.44%

Target Compounds

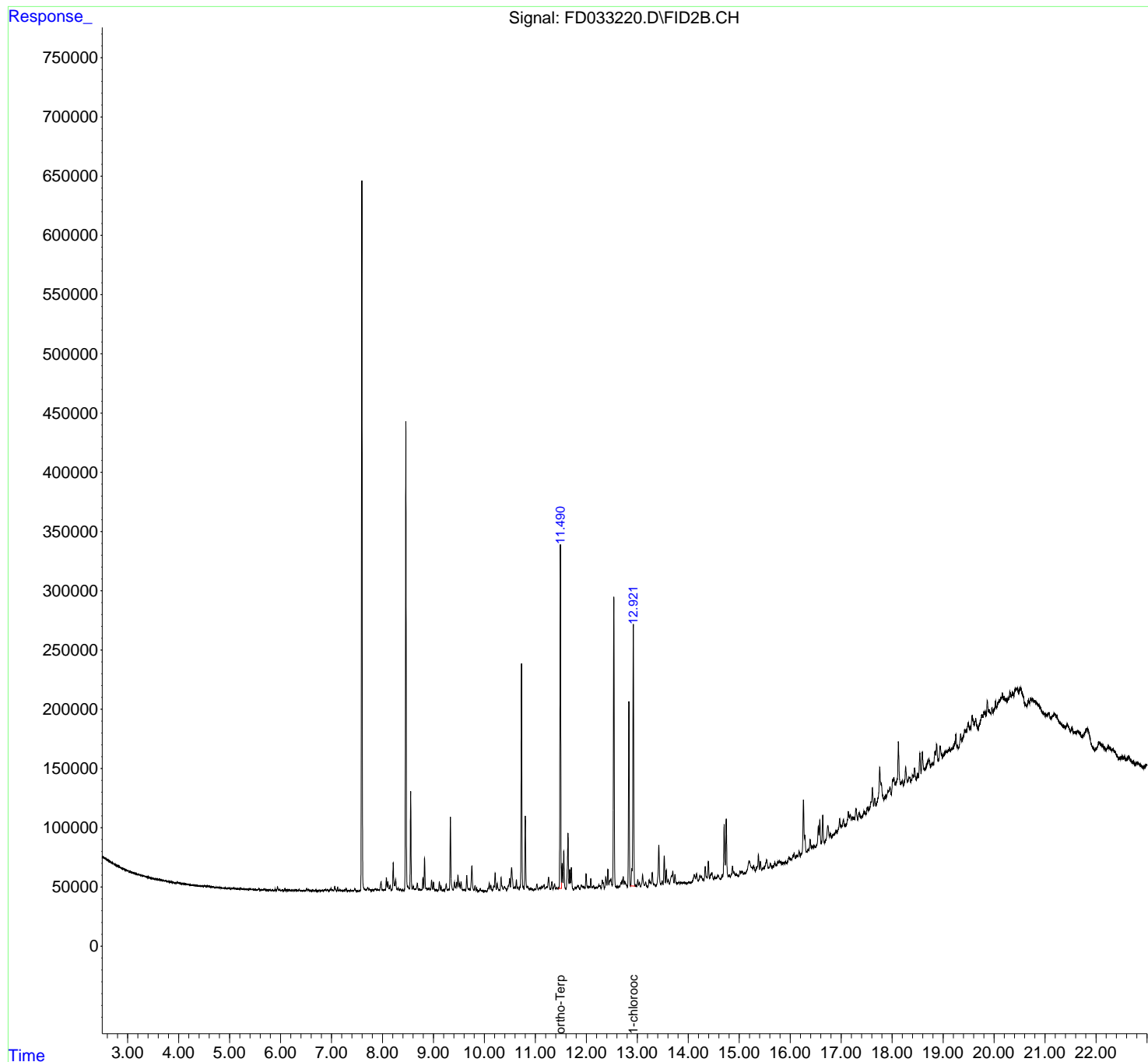
(f)=RT Delta > 1/2 Window

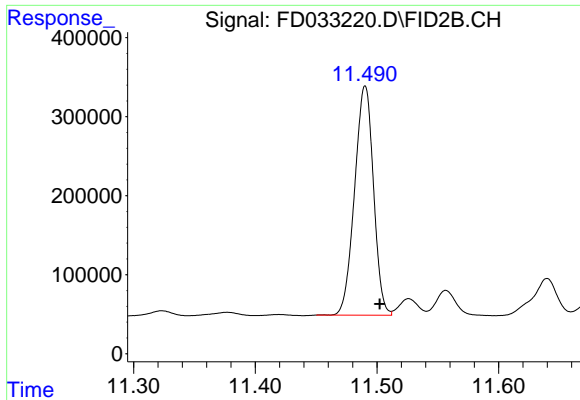
(m)=manual int.

Data Path : Z:\pestpcbsrv\HPCHEM1\FID_D\Data\FD042420AL\
Data File : FD033220.D
Signal(s) : FID2B.CH
Acq On : 25 Apr 2020 23:50
Operator : DD\AJ
Sample : L2374-01
Misc :
ALS Vial : 73 Sample Multiplier: 1

Integration File: sample.E
Quant Time: Apr 27 02:50:36 2020
Quant Method : Z:\pestpcbsrv\HPCHEM1\FID_D\methods\Alaphatic EPH 040720.M
Quant Title : GC Extractables
QLast Update : Tue Apr 07 14:10:50 2020
Response via : Initial Calibration
Integrator: ChemStation 6890 Scale Mode: Large solvent peaks clipped

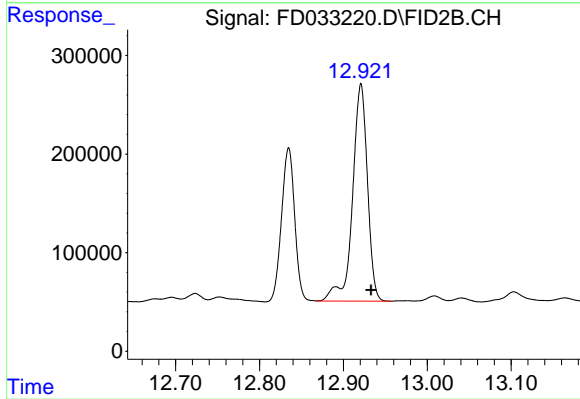
Volume Inj. : 1 ul
Signal Phase : Rxi-1ms
Signal Info : 20M x 0.18mm x 0.18um





#9 ortho-Terphenyl (SURR)

R.T.: 11.490 min
Delta R.T.: -0.012 min
Response: 3132267
Conc: 20.85 ug/ml



#12 1-chlorooctadecane (SURR)

R.T.: 12.921 min
Delta R.T.: -0.012 min
Response: 2725376
Conc: 23.22 ug/ml