

Data Path : Z:\pestpcbsrv\HPCHEM1\FID\_D\Data\FD042424AR\  
 Data File : FD047577.D  
 Signal(s) : FID2B.ch  
 Acq On : 25 Apr 2024 07:01  
 Operator : YP/AJ  
 Sample : I.BLK  
 Misc :  
 ALS Vial : 51 Sample Multiplier: 1

Instrument :  
 FID\_D  
 ClientSampleId :  
 I.BLK

Integration File: autoint1.e  
 Quant Time: Apr 25 08:51:23 2024  
 Quant Method : Z:\pestpcbsrv\HPCHEM1\FID\_D\methods\Aromatic EPH 040224.M  
 Quant Title : GC Extractables  
 QLast Update : Mon Apr 01 16:48:10 2024  
 Response via : Initial Calibration  
 Integrator: ChemStation

Volume Inj. : 1 µl  
 Signal Phase : Rxi-1ms  
 Signal Info : 20M x 0.18mm x 0.18µm

Compound	R.T.	Response	Conc Units
-----			
System Monitoring Compounds			
Target Compounds			
-----			

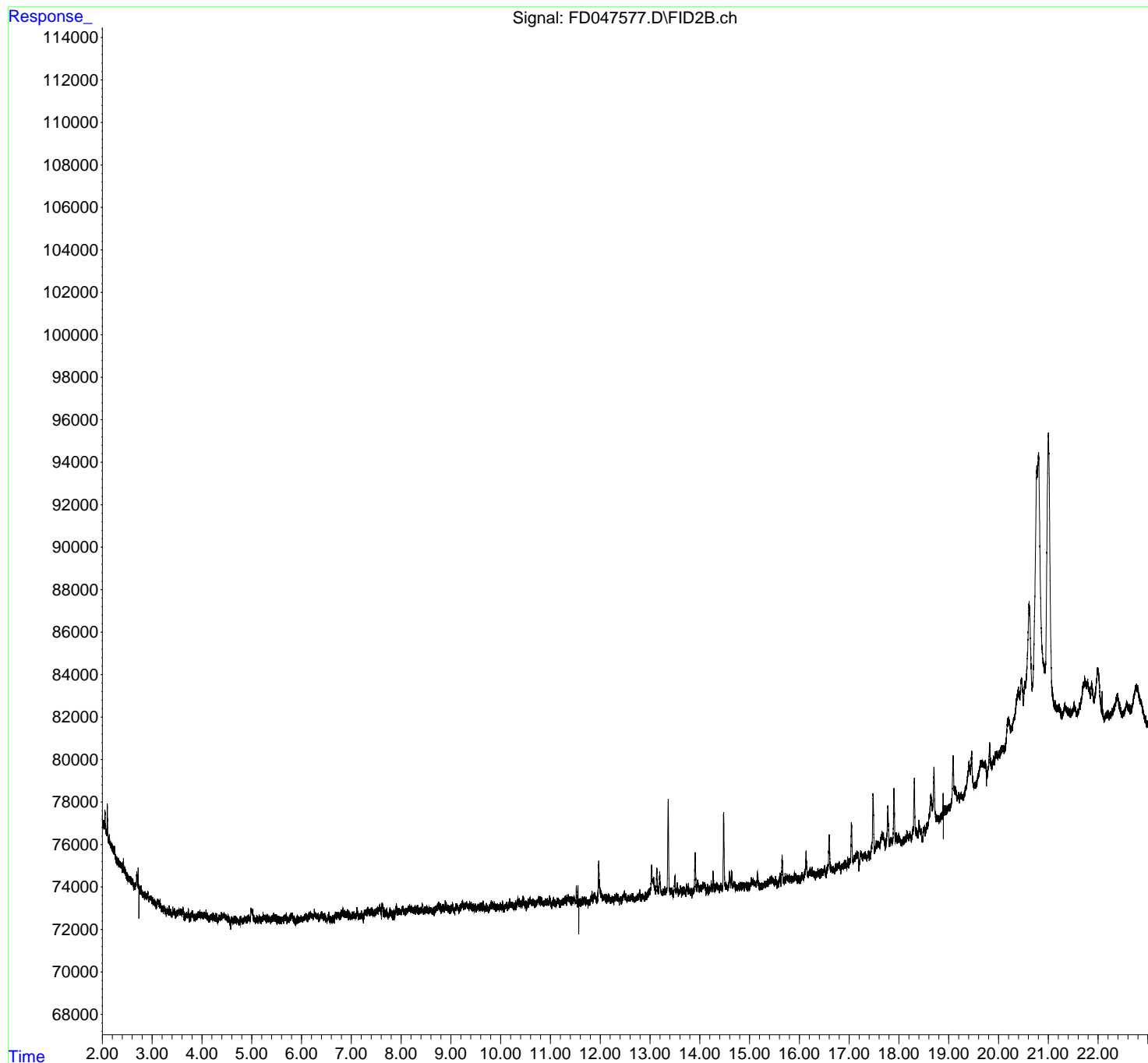
(f)=RT Delta > 1/2 Window (m)=manual int.

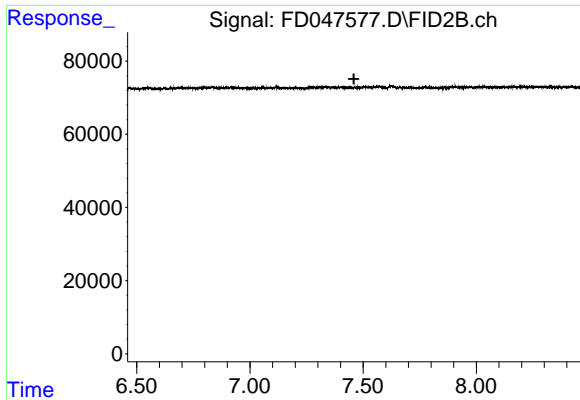
Data Path : Z:\pestpcbsrv\HPCHEM1\FID\_D\Data\FD042424AR\  
Data File : FD047577.D  
Signal(s) : FID2B.ch  
Acq On : 25 Apr 2024 07:01  
Operator : YP/AJ  
Sample : I.BLK  
Misc :  
ALS Vial : 51 Sample Multiplier: 1

Instrument :  
FID\_D  
ClientSampleId :  
I.BLK

Integration File: autoint1.e  
Quant Time: Apr 25 08:51:23 2024  
Quant Method : Z:\pestpcbsrv\HPCHEM1\FID\_D\methods\Aromatic EPH 040224.M  
Quant Title : GC Extractables  
QLast Update : Mon Apr 01 16:48:10 2024  
Response via : Initial Calibration  
Integrator: ChemStation

Volume Inj. : 1  $\mu$ l  
Signal Phase : Rxi-1ms  
Signal Info : 20M x 0.18mm x 0.18 $\mu$ m

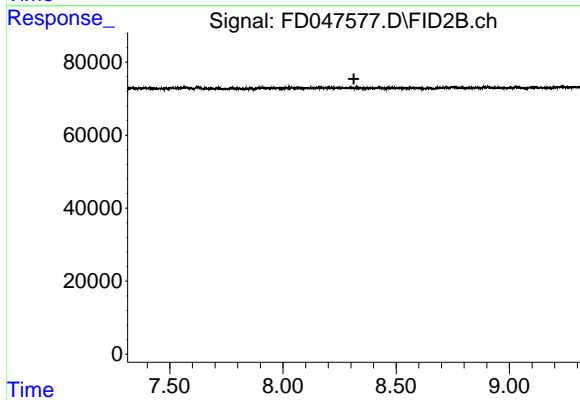




#4 2-Bromonaphthalene (SURRE)

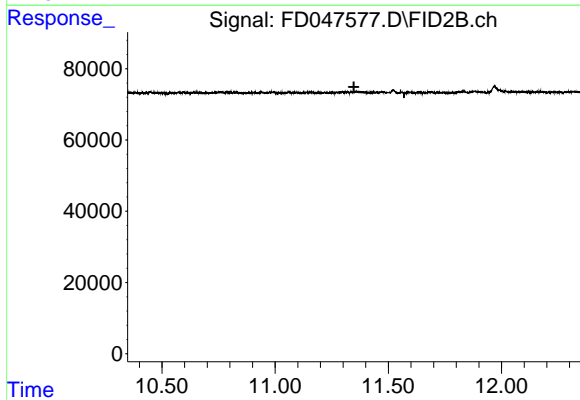
R.T.: 0.000 min  
Exp R.T. : 7.459 min  
Response: 0  
Conc: N.D.

Instrument :  
FID\_D  
ClientSampleId :  
I.BLK



#6 2-Fluorobiphenyl (SURRE)

R.T.: 0.000 min  
Exp R.T. : 8.313 min  
Response: 0  
Conc: N.D.



#11 ortho-Terphenyl (SURRE)

R.T.: 0.000 min  
Exp R.T. : 11.348 min  
Response: 0  
Conc: N.D.