

Data Path : Z:\pestpcbsrv\HPCHEM1\FID\_D\Data\FD042921AL\  
 Data File : FD037249.D  
 Signal(s) : FID2B.CH  
 Acq On : 30 Apr 2021 3:23  
 Operator : DD\AJ  
 Sample : 20 PPM ALIPHATIC HC STD  
 Misc :  
 ALS Vial : 52 Sample Multiplier: 1

Integration File: autoint1.e  
 Quant Time: Apr 30 04:01:16 2021  
 Quant Method : Z:\pestpcbsrv\HPCHEM1\FID\_D\methods\Alaphatic EPH 042121.M  
 Quant Title : GC Extractables  
 QLast Update : Thu Apr 22 03:31:40 2021  
 Response via : Initial Calibration  
 Integrator: ChemStation 6890 Scale Mode: Large solvent peaks clipped

Volume Inj. : 1 ul  
 Signal Phase : Rxi-1ms  
 Signal Info : 20M x 0.18mm x 0.18um

Compound	R.T.	Response	Conc Units
-----			
System Monitoring Compounds			
9) S ortho-Terphenyl (SURR)	11.477	2293339	19.640 ug/ml
Spiked Amount	50.000	Recovery	= 39.28%
12) S 1-chlorooctadecane (S...	12.909	1701152	20.108 ug/ml
Spiked Amount	50.000	Recovery	= 40.22%
Target Compounds			
1) T n-Nonane (C9)	3.273	2435550	20.671 ug/ml
2) T n-Decane (C10)	4.334	2450120	20.660 ug/ml
3) T A~Naphthalene (C11.7)	5.910	2670717	20.351 ug/ml
4) T n-Dodecane (C12)	6.346	2446831	20.605 ug/ml
5) T A~2-methylnaphthalene...	6.962	2647596	20.191 ug/ml
6) T n-Tetradecane (C14)	8.134	2368125	20.458 ug/ml
7) T n-Hexadecane (C16)	9.728	2227740	20.263 ug/ml
8) T n-Octadecane (C18)	11.164	2193337	20.004 ug/ml
10) T n-Eicosane (C20)	12.468	2096787	19.767 ug/ml
11) T n-Heneicosane (C21)	13.077	2057320	19.583 ug/ml
13) T n-Docosane (C22)	13.661	2020525	19.655 ug/ml
14) T n-Tetracosane (C24)	14.759	1983815	19.585 ug/ml
15) T n-Hexacosane (C26)	15.775	1956232	20.029 ug/ml
16) T n-Octacosane (C28)	16.720	1971581	20.511 ug/ml
17) T n-Tricontane (C30)	17.601	2003046	20.828 ug/ml
18) T n-Dotriacontane (C32)	18.430	2009760	20.434 ug/ml
19) T n-Tetratriacontane (C34)	19.208	1992062	20.987 ug/ml
20) T n-Hexatriacontane (C36)	19.945	1919406	20.381 ug/ml
21) T n-Octatriacontane (C38)	20.655	1839974	21.372 ug/ml
22) T n-Tetracontane (C40)	21.503	1900151	19.804 ug/ml
-----			

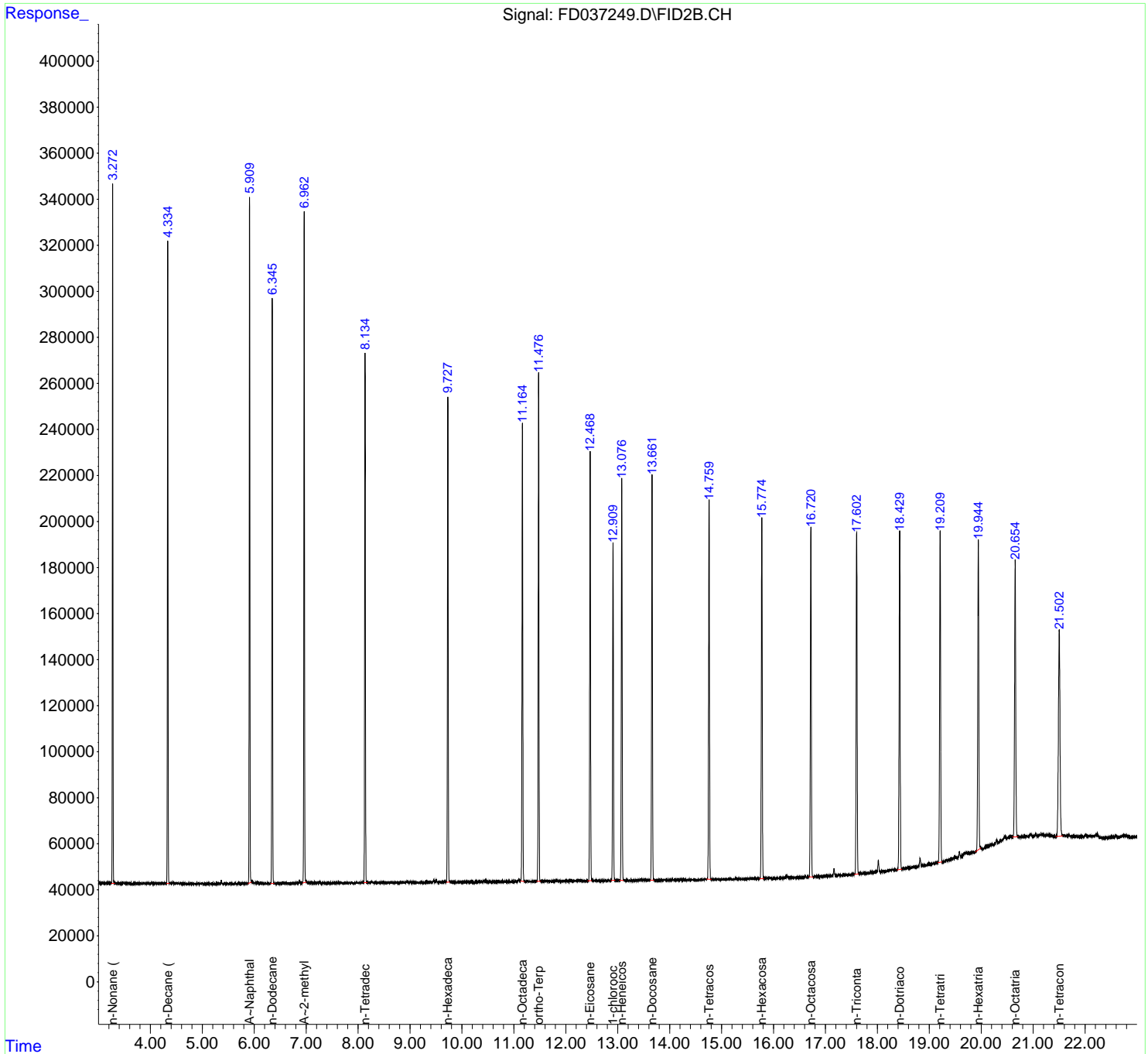
(f)=RT Delta > 1/2 Window

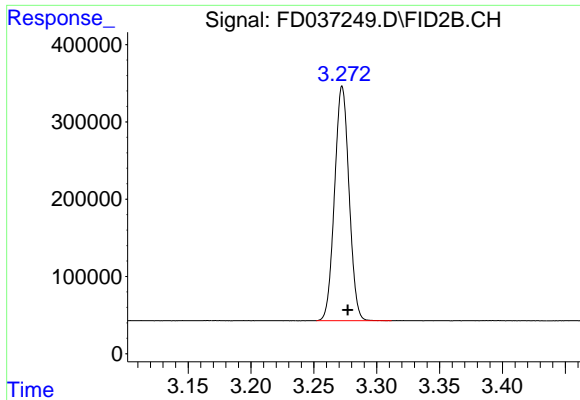
(m)=manual int.

Data Path : Z:\pestpcbsrv\HPCHEM1\FID\_D\Data\FD042921AL\  
 Data File : FD037249.D  
 Signal(s) : FID2B.CH  
 Acq On : 30 Apr 2021 3:23  
 Operator : DD\AJ  
 Sample : 20 PPM ALIPHATIC HC STD  
 Misc :  
 ALS Vial : 52 Sample Multiplier: 1

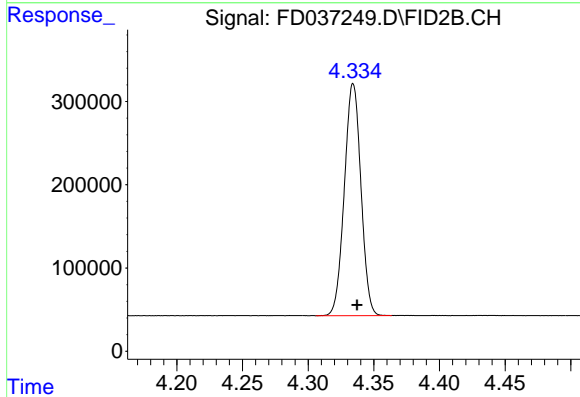
Integration File: autoint1.e  
 Quant Time: Apr 30 04:01:16 2021  
 Quant Method : Z:\pestpcbsrv\HPCHEM1\FID\_D\methods\Aliphatic EPH 042121.M  
 Quant Title : GC Extractables  
 QLast Update : Thu Apr 22 03:31:40 2021  
 Response via : Initial Calibration  
 Integrator: ChemStation 6890 Scale Mode: Large solvent peaks clipped

Volume Inj. : 1 ul  
 Signal Phase : Rxi-1ms  
 Signal Info : 20M x 0.18mm x 0.18um

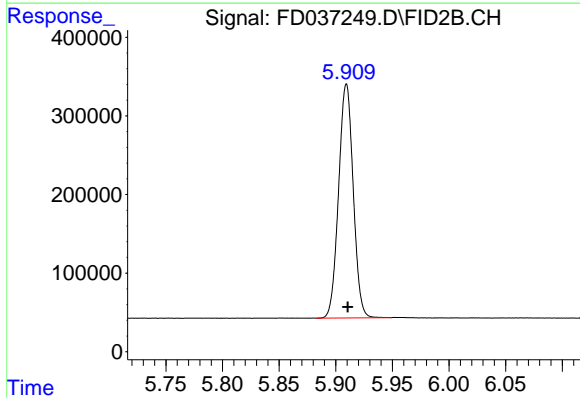




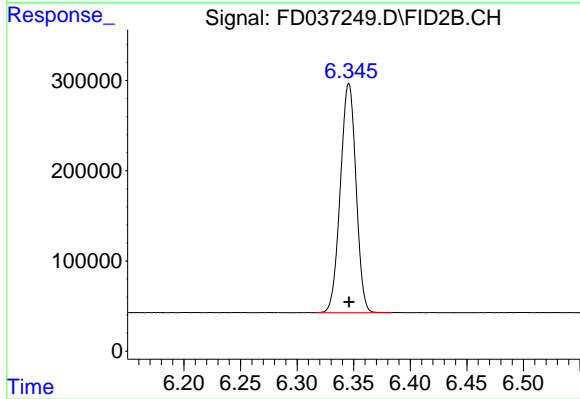
#1 n-Nonane (C9)  
R.T.: 3.273 min  
Delta R.T.: -0.004 min  
Response: 2435550  
Conc: 20.67 ug/ml



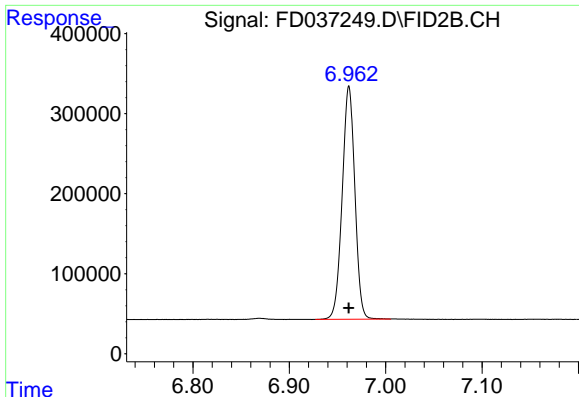
#2 n-Decane (C10)  
R.T.: 4.334 min  
Delta R.T.: -0.003 min  
Response: 2450120  
Conc: 20.66 ug/ml



#3 A~Naphthalene (C11.7)  
R.T.: 5.910 min  
Delta R.T.: -0.001 min  
Response: 2670717  
Conc: 20.35 ug/ml

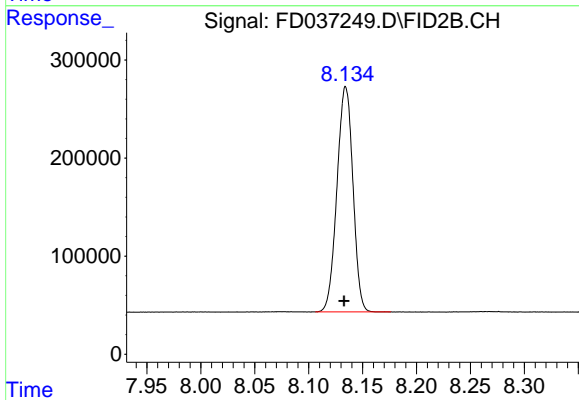


#4 n-Dodecane (C12)  
R.T.: 6.346 min  
Delta R.T.: 0.000 min  
Response: 2446831  
Conc: 20.60 ug/ml



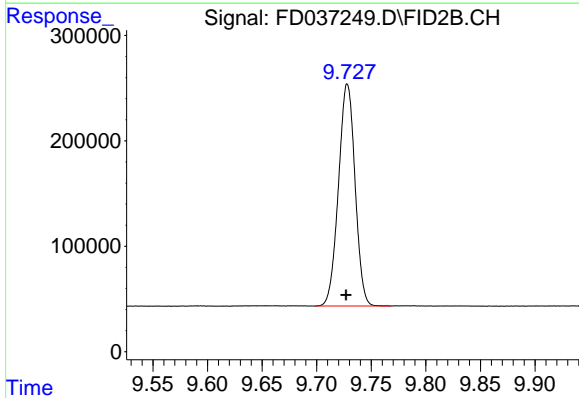
#5 A~2-methylnaphthalene (C12.89)

R.T.: 6.962 min  
Delta R.T.: 0.000 min  
Response: 2647596  
Conc: 20.19 ug/ml



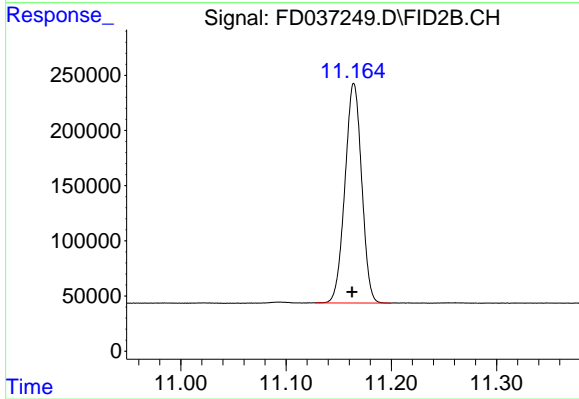
#6 n-Tetradecane (C14)

R.T.: 8.134 min  
Delta R.T.: 0.001 min  
Response: 2368125  
Conc: 20.46 ug/ml



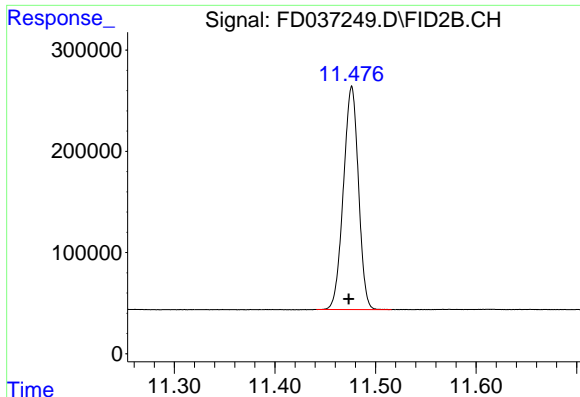
#7 n-Hexadecane (C16)

R.T.: 9.728 min  
Delta R.T.: 0.001 min  
Response: 2227740  
Conc: 20.26 ug/ml



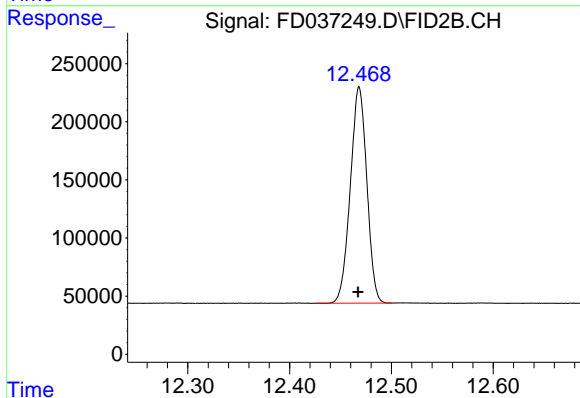
#8 n-Octadecane (C18)

R.T.: 11.164 min  
Delta R.T.: 0.002 min  
Response: 2193337  
Conc: 20.00 ug/ml



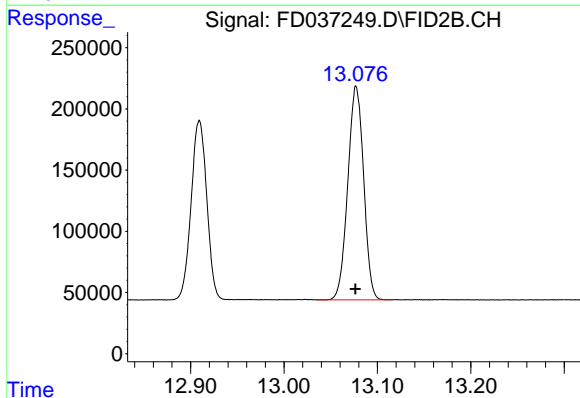
#9 ortho-Terphenyl (SURR)

R.T.: 11.477 min  
Delta R.T.: 0.003 min  
Response: 2293339  
Conc: 19.64 ug/ml



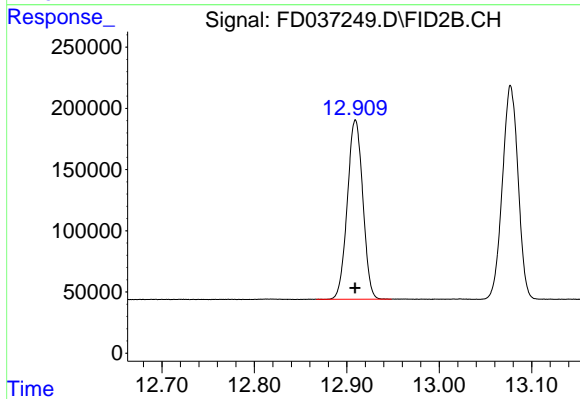
#10 n-Eicosane (C20)

R.T.: 12.468 min  
Delta R.T.: 0.000 min  
Response: 2096787  
Conc: 19.77 ug/ml



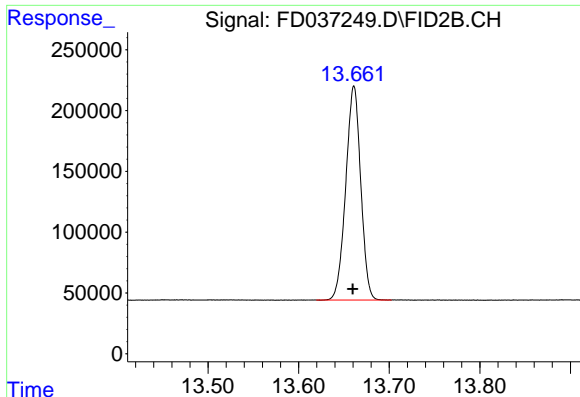
#11 n-Heneicosane (C21)

R.T.: 13.077 min  
Delta R.T.: 0.000 min  
Response: 2057320  
Conc: 19.58 ug/ml



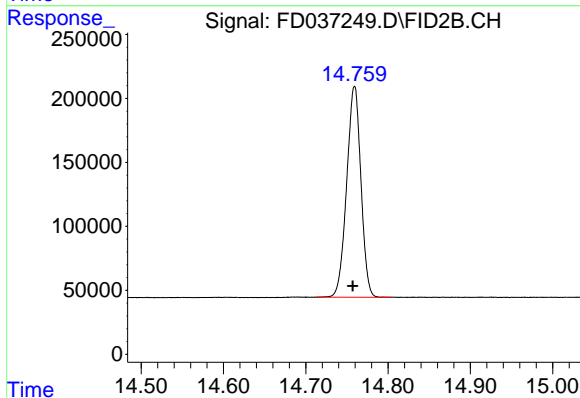
#12 1-chlorooctadecane (SURR)

R.T.: 12.909 min  
Delta R.T.: 0.000 min  
Response: 1701152  
Conc: 20.11 ug/ml



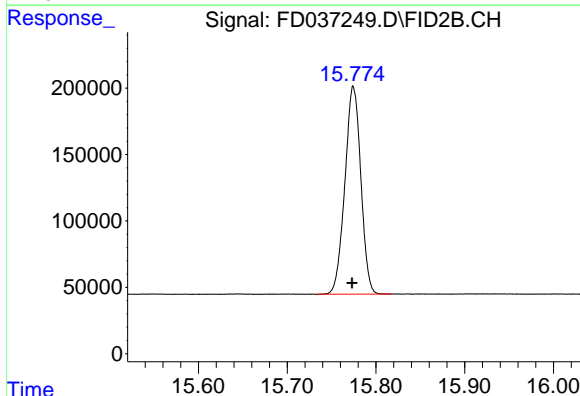
#13 n-Docosane (C22)

R.T.: 13.661 min  
Delta R.T.: 0.002 min  
Response: 2020525  
Conc: 19.66 ug/ml



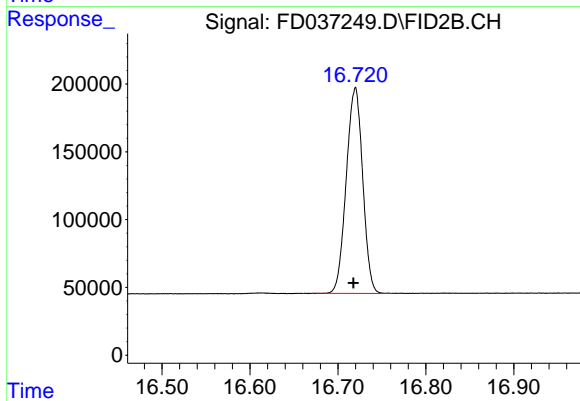
#14 n-Tetracosane (C24)

R.T.: 14.759 min  
Delta R.T.: 0.002 min  
Response: 1983815  
Conc: 19.58 ug/ml



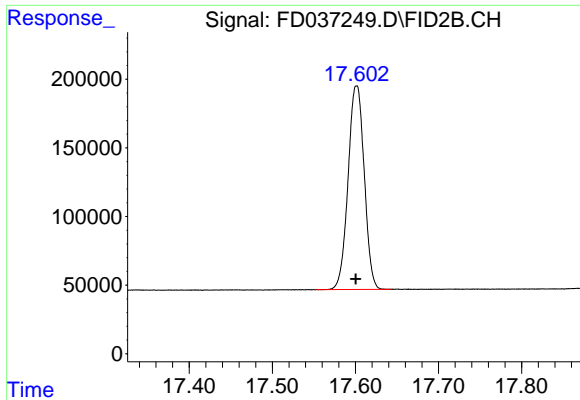
#15 n-Hexacosane (C26)

R.T.: 15.775 min  
Delta R.T.: 0.001 min  
Response: 1956232  
Conc: 20.03 ug/ml



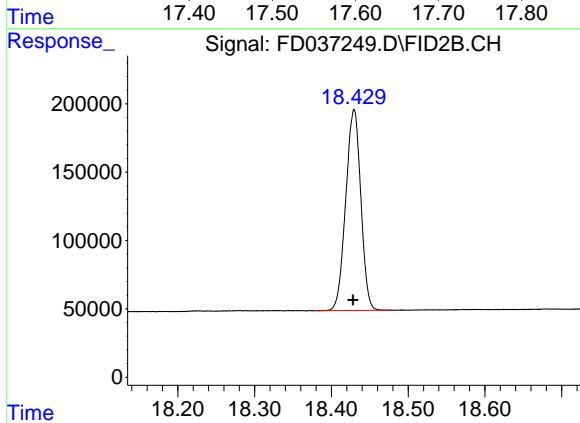
#16 n-Octacosane (C28)

R.T.: 16.720 min  
Delta R.T.: 0.002 min  
Response: 1971581  
Conc: 20.51 ug/ml



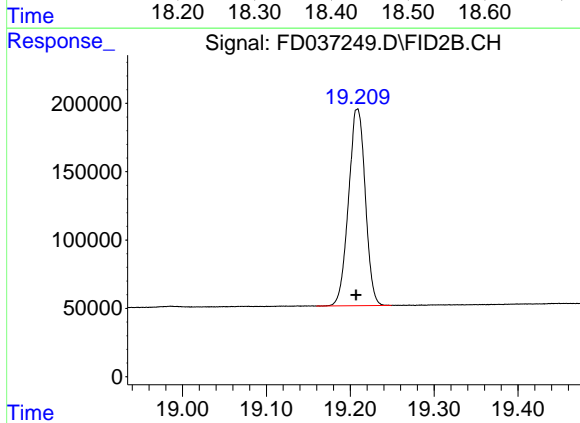
#17 n-Tricontane (C30)

R.T.: 17.601 min  
Delta R.T.: 0.001 min  
Response: 2003046  
Conc: 20.83 ug/ml



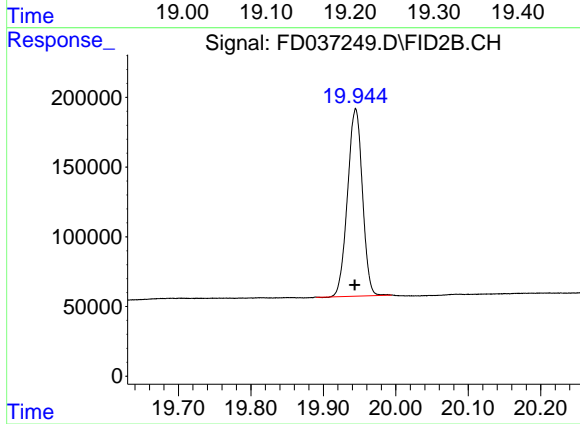
#18 n-Dotriacontane (C32)

R.T.: 18.430 min  
Delta R.T.: 0.002 min  
Response: 2009760  
Conc: 20.43 ug/ml



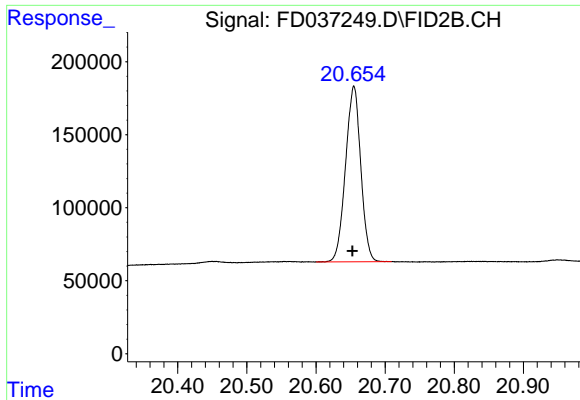
#19 n-Tetratriacontane (C34)

R.T.: 19.208 min  
Delta R.T.: 0.001 min  
Response: 1992062  
Conc: 20.99 ug/ml



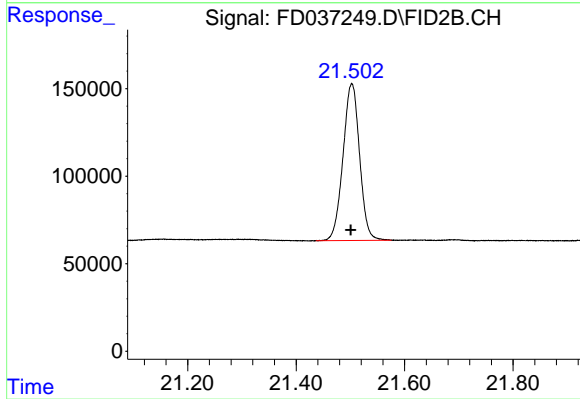
#20 n-Hexatriacontane (C36)

R.T.: 19.945 min  
Delta R.T.: 0.001 min  
Response: 1919406  
Conc: 20.38 ug/ml



#21 n-Octatriacontane (C38)

R.T.: 20.655 min  
Delta R.T.: 0.002 min  
Response: 1839974  
Conc: 21.37 ug/ml



#22 n-Tetracontane (C40)

R.T.: 21.503 min  
Delta R.T.: 0.002 min  
Response: 1900151  
Conc: 19.80 ug/ml