

Data Path : Z:\pestpcbsrv\HPCHEM1\FID_D\Data\FD050620AR\
 Data File : FD033296.D
 Signal(s) : FID2B.CH
 Acq On : 06 May 2020 19:55
 Operator : DD\AJ
 Sample : 5 PPM AROMATIC HC STD5
 Misc :
 ALS Vial : 57 Sample Multiplier: 1

Integration File: autoint1.e
 Quant Time: May 07 03:51:44 2020
 Quant Method : Z:\pestpcbsrv\HPCHEM1\FID_D\methods\Aromatic EPH 050620.M
 Quant Title : GC Extractables
 QLast Update : Thu May 07 03:25:25 2020
 Response via : Initial Calibration
 Integrator: ChemStation 6890 Scale Mode: Large solvent peaks clipped

Volume Inj. : 1 µl
 Signal Phase : Rxi-1ms
 Signal Info : 20M x 0.18mm x 0.18µm

Compound	R.T.	Response	Conc Units

System Monitoring Compounds			
4) S 2-Bromonaphthalene (S...	7.590	459184	4.055 ug/ml
Spiked Amount 50.000		Recovery =	8.11%
6) S 2-Fluorobiphenyl (SURR)	8.455	303987	3.999 ug/mlm
Spiked Amount 50.000 Range 0 - 131		Recovery =	8.00%
11) S ortho-Terphenyl (SURR)	11.481	610385	4.599 ug/ml
Spiked Amount 50.000		Recovery =	9.20%
Target Compounds			
1) T 1,2,3-Trimethylbenzen...	4.397	520627	4.450 ug/ml
2) T Naphthalene (C11.7)	5.934	496501	4.069 ug/ml
3) T 2-Methylnaphthalene (...)	6.982	527944	4.294 ug/mlm
5) T Acenaphthylene (C15.06)	8.253	541389	4.404 ug/ml
7) T Acenaphthene (C15.5)	8.546	561619	4.355 ug/ml
8) T Flouorene (C16.55)	9.328	510405	4.043 ug/ml
9) T Phenanthrene (C19.36)	10.722	552813	4.245 ug/ml
10) T Anthracene (C19.43)	10.798	520507	4.127 ug/ml
12) T Fluoranthene (C21.85)	12.531	582530	4.332 ug/ml
13) T Pyrene (C20.8)	12.827	595857	4.482 ug/ml
14) T Benzo[a]anthracene (C...	14.700	524601	4.121 ug/ml
15) T Chrysene (C27.41)	14.741	615273	4.645 ug/ml
16) T benzo[b]fluoranthene ...	16.251	554695	4.294 ug/ml
17) T Bnezo[k]fluoranthene ...	16.282	620050	4.669 ug/ml
18) T Benzo[a]pyrene (C31.34)	16.633	546430	4.282 ug/ml
19) T Indeno[1,2,3-cd]pyren...	18.002	479832	4.002 ug/ml
20) T Dibenz[a,h]anthracene...	18.038	607453	4.640 ug/ml
21) T Benzo[g,h,i]perylene ...	18.252	541182	4.358 ug/ml

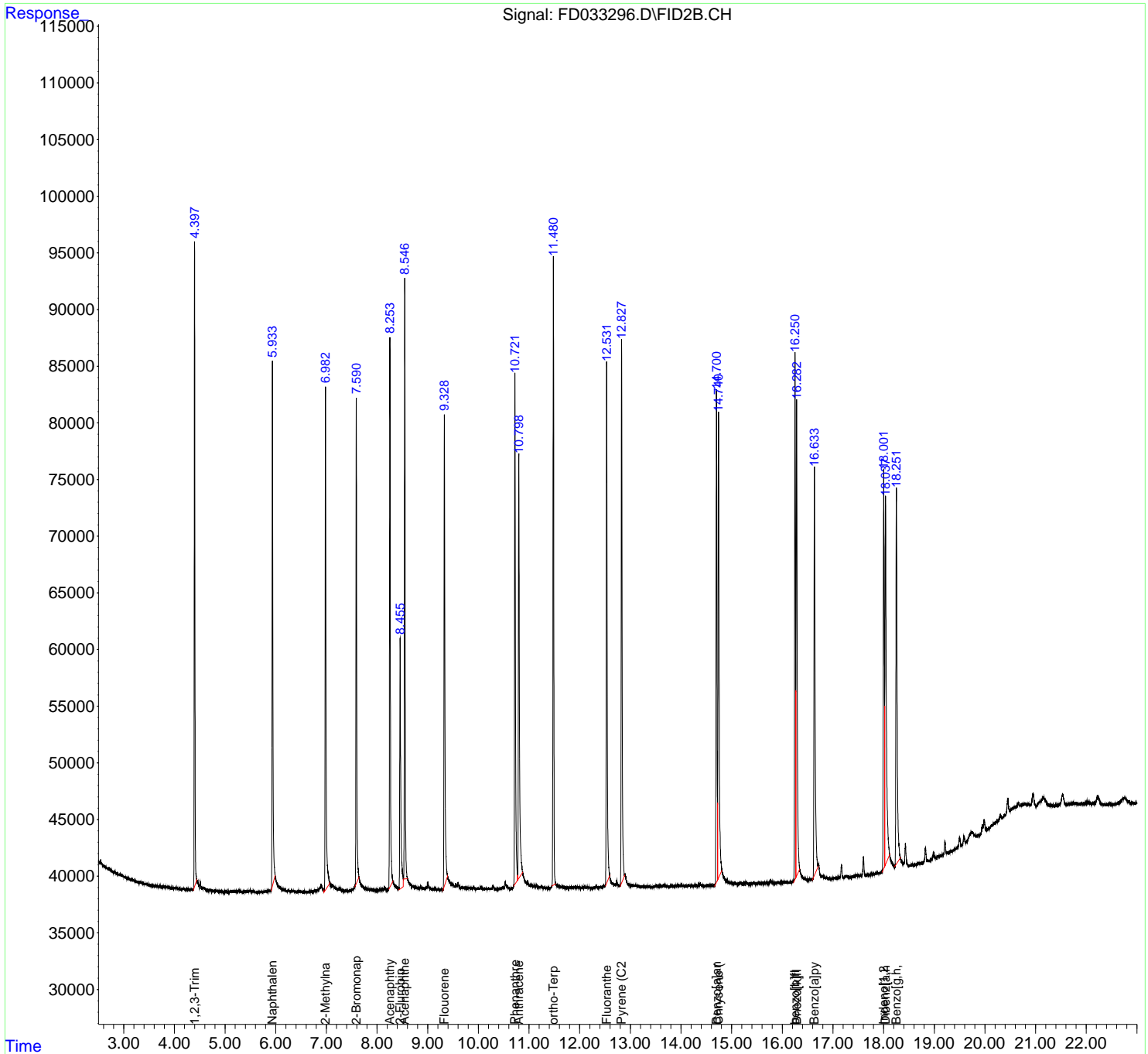
(f)=RT Delta > 1/2 Window

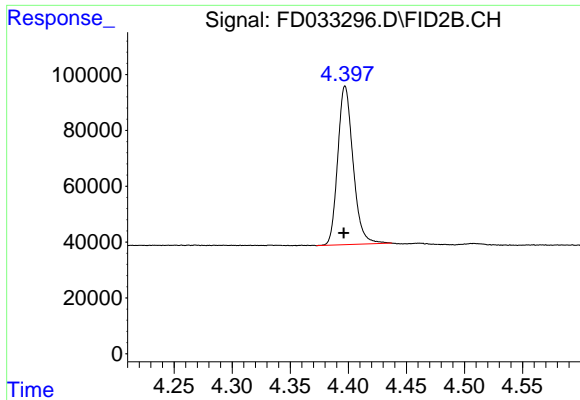
(m)=manual int.

Data Path : Z:\pestpcbsrv\HPCHEM1\FID_D\Data\FD050620AR\
 Data File : FD033296.D
 Signal(s) : FID2B.CH
 Acq On : 06 May 2020 19:55
 Operator : DD\AJ
 Sample : 5 PPM AROMATIC HC STD5
 Misc :
 ALS Vial : 57 Sample Multiplier: 1

Integration File: autoint1.e
 Quant Time: May 07 03:51:44 2020
 Quant Method : Z:\pestpcbsrv\HPCHEM1\FID_D\methods\Aromatic EPH 050620.M
 Quant Title : GC Extractables
 QLast Update : Thu May 07 03:25:25 2020
 Response via : Initial Calibration
 Integrator: ChemStation 6890 Scale Mode: Large solvent peaks clipped

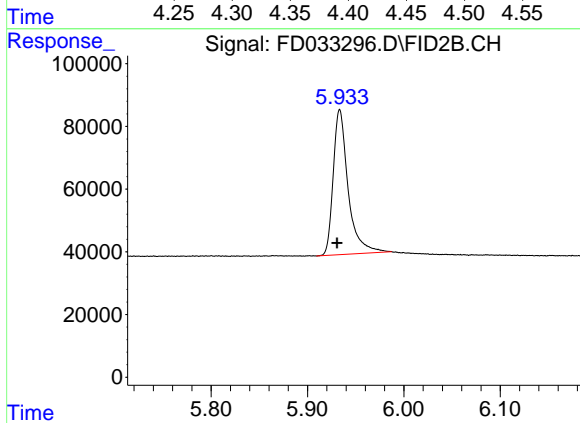
Volume Inj. : 1 µl
 Signal Phase : Rxi-1ms
 Signal Info : 20M x 0.18mm x 0.18µm





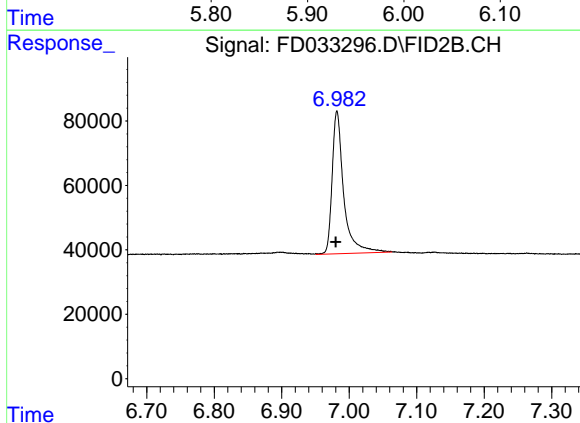
#1 1,2,3-Trimethylbenzene (C10.1)

R.T.: 4.397 min
Delta R.T.: 0.001 min
Response: 520627
Conc: 4.45 ug/ml



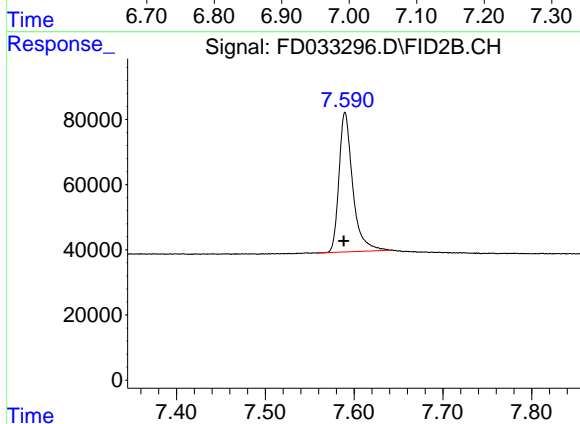
#2 Naphthalene (C11.7)

R.T.: 5.934 min
Delta R.T.: 0.003 min
Response: 496501
Conc: 4.07 ug/ml



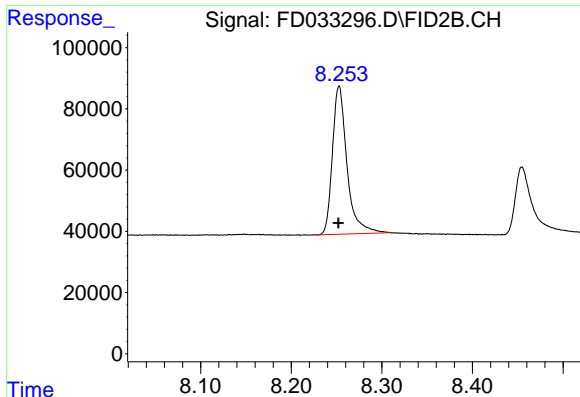
#3 2-Methylnaphthalene (C12.89)

R.T.: 6.982 min
Delta R.T.: 0.001 min
Response: 527944
Conc: 4.29 ug/ml m



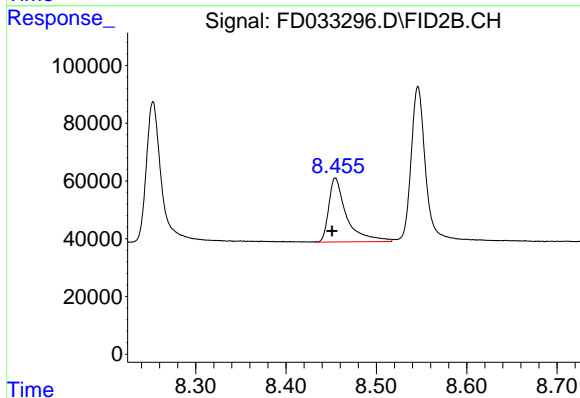
#4 2-Bromonaphthalene (SURR)

R.T.: 7.590 min
Delta R.T.: 0.002 min
Response: 459184
Conc: 4.06 ug/ml



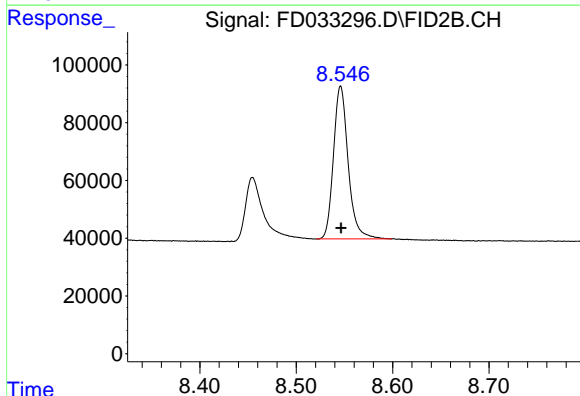
#5 Acenaphthylene (C15.06)

R.T.: 8.253 min
Delta R.T.: 0.000 min
Response: 541389
Conc: 4.40 ug/ml



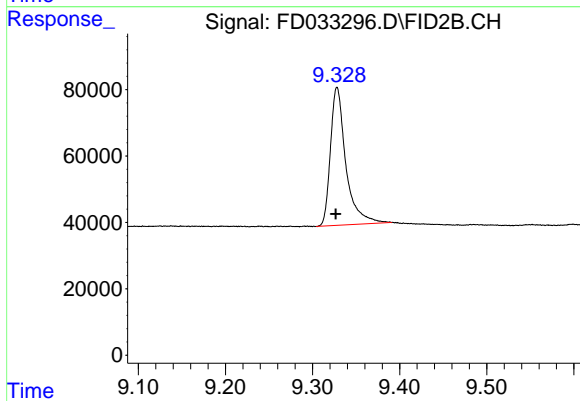
#6 2-Fluorobiphenyl (SURR)

R.T.: 8.455 min
Delta R.T.: 0.004 min
Response: 303987
Conc: 4.00 ug/ml m



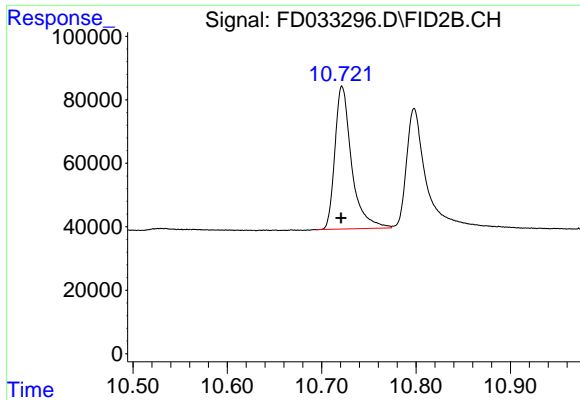
#7 Acenaphthene (C15.5)

R.T.: 8.546 min
Delta R.T.: 0.000 min
Response: 561619
Conc: 4.36 ug/ml

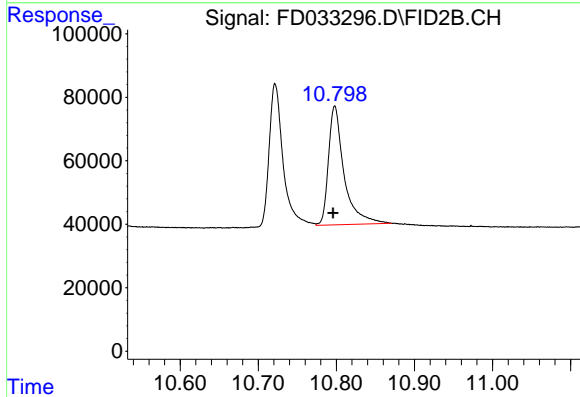


#8 Fluorene (C16.55)

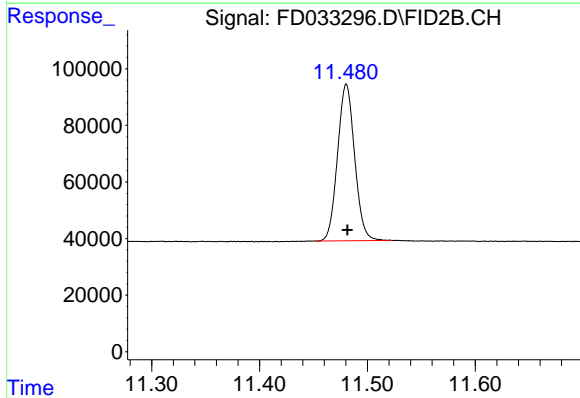
R.T.: 9.328 min
Delta R.T.: 0.002 min
Response: 510405
Conc: 4.04 ug/ml



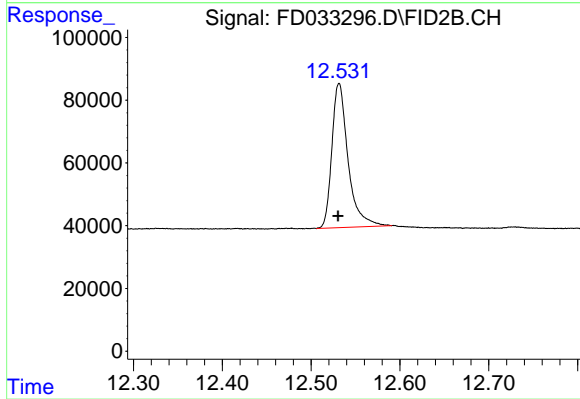
#9 Phenanthrene (C19.36)
R.T.: 10.722 min
Delta R.T.: 0.001 min
Response: 552813
Conc: 4.24 ug/ml



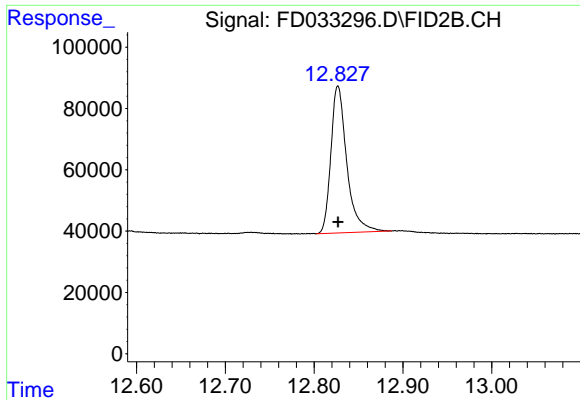
#10 Anthracene (C19.43)
R.T.: 10.798 min
Delta R.T.: 0.002 min
Response: 520507
Conc: 4.13 ug/ml



#11 ortho-Terphenyl (SURR)
R.T.: 11.481 min
Delta R.T.: 0.000 min
Response: 610385
Conc: 4.60 ug/ml

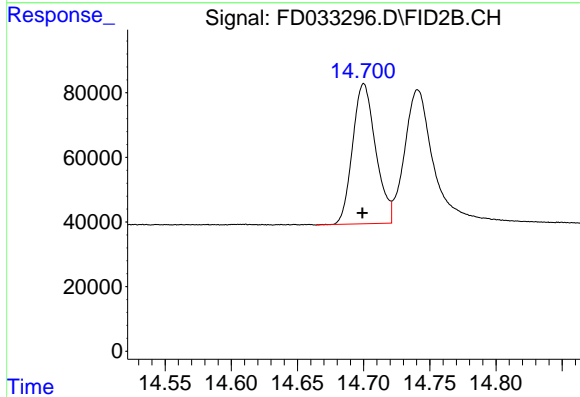


#12 Fluoranthene (C21.85)
R.T.: 12.531 min
Delta R.T.: 0.001 min
Response: 582530
Conc: 4.33 ug/ml



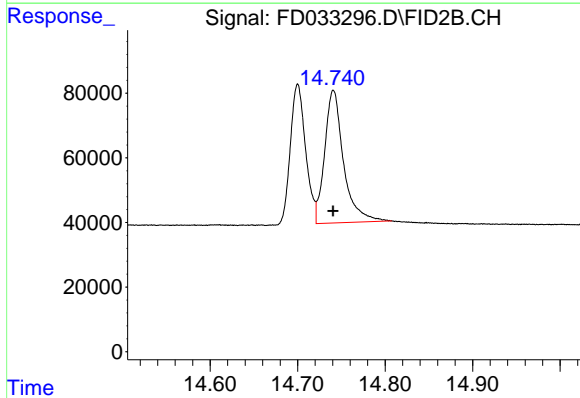
#13 Pyrene (C20.8)

R.T.: 12.827 min
Delta R.T.: 0.000 min
Response: 595857
Conc: 4.48 ug/ml



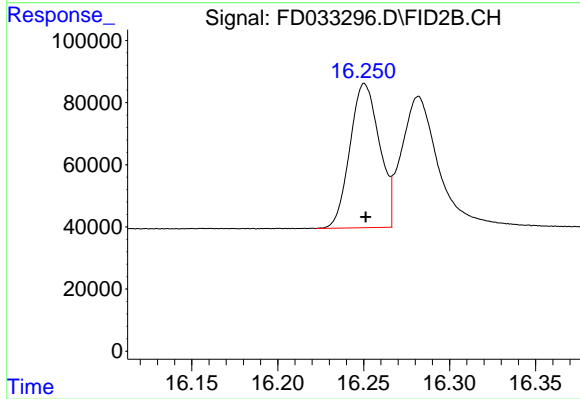
#14 Benzo[a]anthracene (C26.37)

R.T.: 14.700 min
Delta R.T.: 0.001 min
Response: 524601
Conc: 4.12 ug/ml



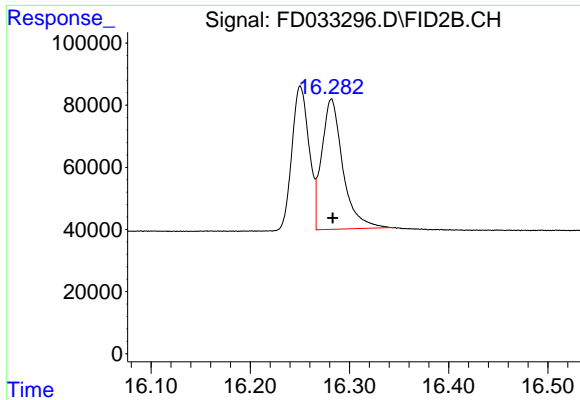
#15 Chrysene (C27.41)

R.T.: 14.741 min
Delta R.T.: 0.000 min
Response: 615273
Conc: 4.64 ug/ml



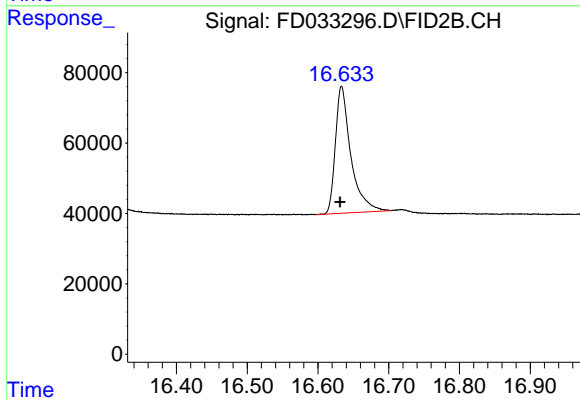
#16 benzo[b]fluoranthene (C30.41)

R.T.: 16.251 min
Delta R.T.: 0.000 min
Response: 554695
Conc: 4.29 ug/ml



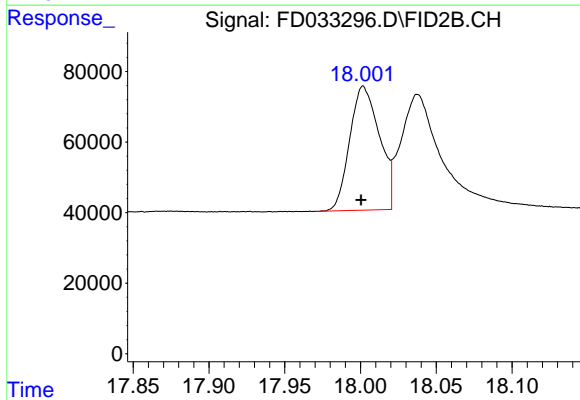
#17 Bnezo[k]fluoranthene (C30.14)

R.T.: 16.282 min
Delta R.T.: -0.001 min
Response: 620050
Conc: 4.67 ug/ml



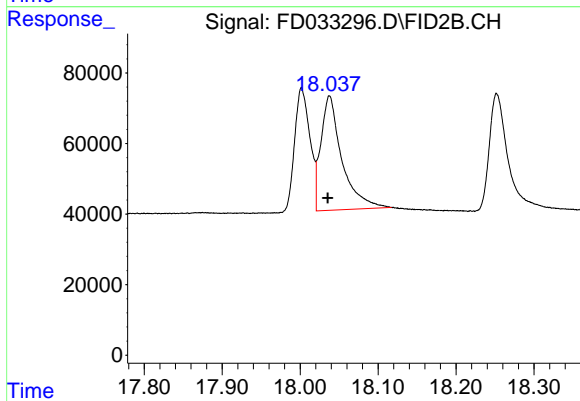
#18 Benzo[a]pyrene (C31.34)

R.T.: 16.633 min
Delta R.T.: 0.002 min
Response: 546430
Conc: 4.28 ug/ml



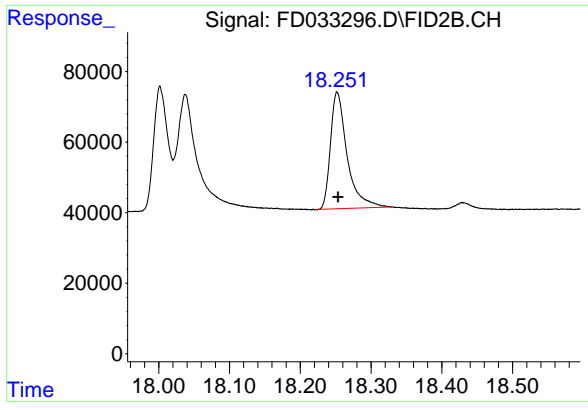
#19 Indeno[1,2,3-cd]pyrene (C35.01)

R.T.: 18.002 min
Delta R.T.: 0.001 min
Response: 479832
Conc: 4.00 ug/ml



#20 Dibenz[a,h]anthracene (C30.36)

R.T.: 18.038 min
Delta R.T.: 0.002 min
Response: 607453
Conc: 4.64 ug/ml



#21 Benzo[g,h,i]perylene (C34.01)

R.T.: 18.252 min
Delta R.T.: -0.001 min
Response: 541182
Conc: 4.36 ug/ml