

Data Path : Z:\pestpcbsrv\HPCHEM1\FID\_D\Data\FD050820AL\  
 Data File : FD033377.D  
 Signal(s) : FID2B.CH  
 Acq On : 09 May 2020 6:10  
 Operator : DD\AJ  
 Sample : L2531-07  
 Misc :  
 ALS Vial : 84 Sample Multiplier: 1

Integration File: autoint1.e  
 Quant Time: May 09 09:24:33 2020  
 Quant Method : Z:\pestpcbsrv\HPCHEM1\FID\_D\methods\Alaphatic EPH 050620.M  
 Quant Title : GC Extractables  
 QLast Update : Thu May 07 05:16:45 2020  
 Response via : Initial Calibration  
 Integrator: ChemStation 6890 Scale Mode: Large solvent peaks clipped

Volume Inj. : 1 ul  
 Signal Phase : Rxi-1ms  
 Signal Info : 20M x 0.18mm x 0.18um

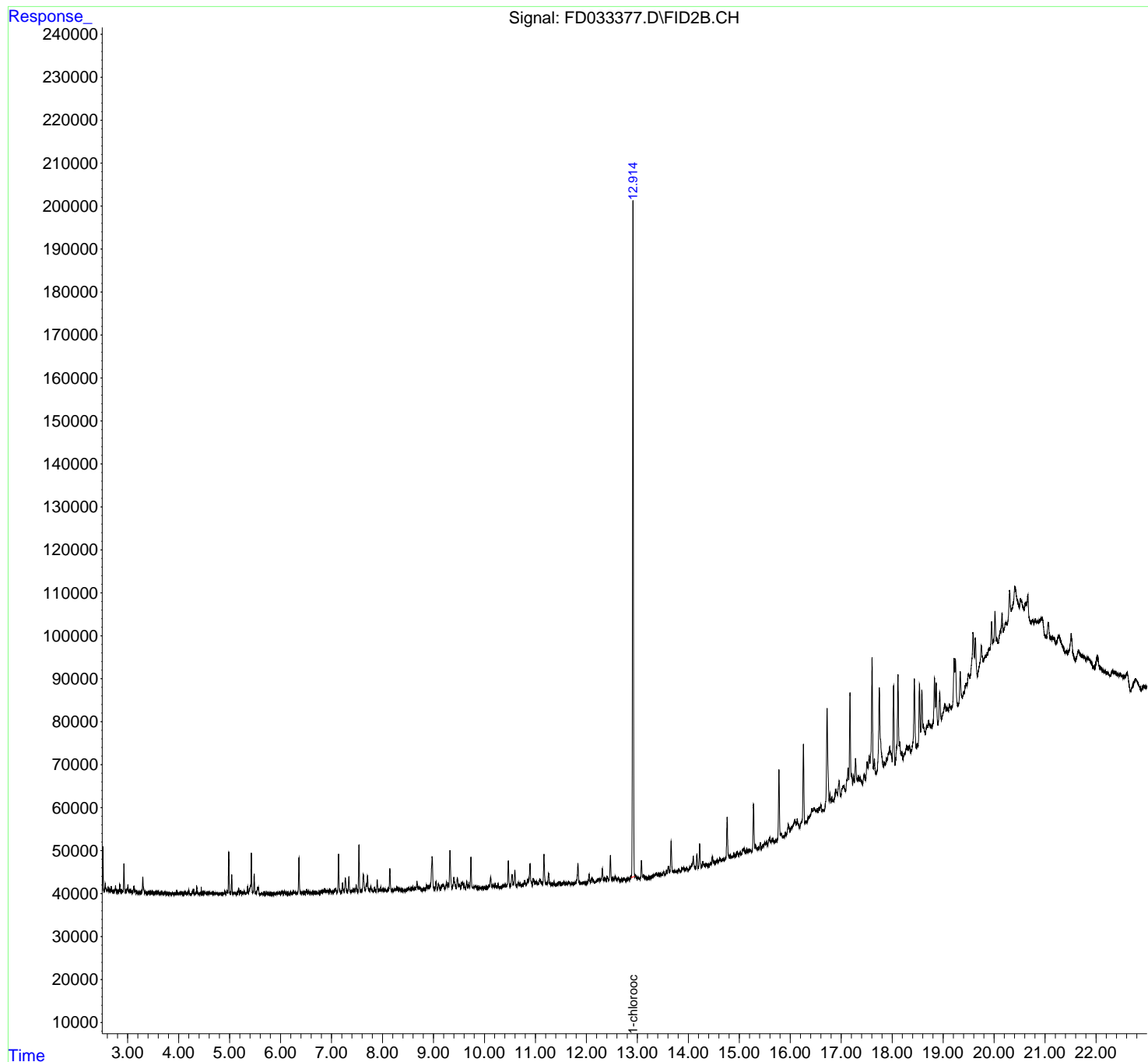
Compound	R.T.	Response	Conc Units
-----			
System Monitoring Compounds			
12) S 1-chlorooctadecane (S...	12.914	1833585	15.940 ug/ml
Spiked Amount	50.000	Recovery	= 31.88%
Target Compounds			
-----			

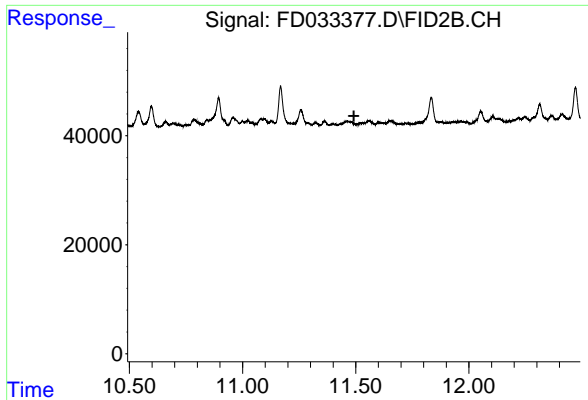
(f)=RT Delta > 1/2 Window (m)=manual int.

Data Path : Z:\pestpcbsrv\HPCHEM1\FID\_D\Data\FD050820AL\  
Data File : FD033377.D  
Signal(s) : FID2B.CH  
Acq On : 09 May 2020 6:10  
Operator : DD\AJ  
Sample : L2531-07  
Misc :  
ALS Vial : 84 Sample Multiplier: 1

Integration File: autoint1.e  
Quant Time: May 09 09:24:33 2020  
Quant Method : Z:\pestpcbsrv\HPCHEM1\FID\_D\methods\Alaphatic EPH 050620.M  
Quant Title : GC Extractables  
QLast Update : Thu May 07 05:16:45 2020  
Response via : Initial Calibration  
Integrator: ChemStation 6890 Scale Mode: Large solvent peaks clipped

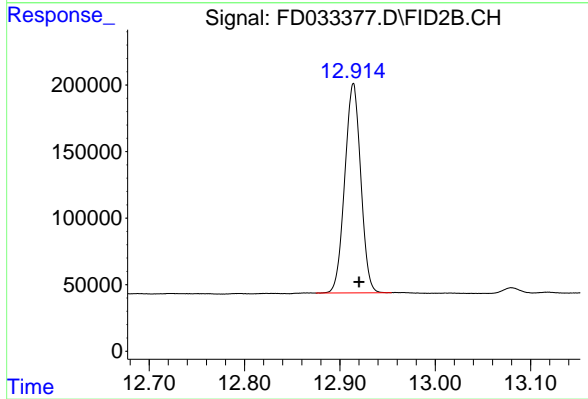
Volume Inj. : 1 ul  
Signal Phase : Rxi-1ms  
Signal Info : 20M x 0.18mm x 0.18um





#9 ortho-Terphenyl (SURR)

R.T.: 0.000 min  
Exp R.T. : 11.492 min  
Response: 0  
Conc: N.D.



#12 1-chlorooctadecane (SURR)

R.T.: 12.914 min  
Delta R.T.: -0.006 min  
Response: 1833585  
Conc: 15.94 ug/ml