

Data Path : Z:\pestpcbsrv\HPCHEM1\FID\_D\Data\FD050920AR\  
 Data File : FD033424.D  
 Signal(s) : FID2B.CH  
 Acq On : 10 May 2020 10:30  
 Operator : DD\AJ  
 Sample : L2531-06D  
 Misc :  
 ALS Vial : 85 Sample Multiplier: 1

Integration File: autoint1.e  
 Quant Time: May 11 02:42:30 2020  
 Quant Method : Z:\pestpcbsrv\HPCHEM1\FID\_D\methods\Aromatic EPH 050620.M  
 Quant Title : GC Extractables  
 QLast Update : Thu May 07 12:57:17 2020  
 Response via : Initial Calibration  
 Integrator: ChemStation 6890 Scale Mode: Large solvent peaks clipped

Volume Inj. : 1 µl  
 Signal Phase : Rxi-1ms  
 Signal Info : 20M x 0.18mm x 0.18µm

Compound	R.T.	Response	Conc Units
-----			
System Monitoring Compounds			
4) S 2-Bromonaphthalene (S...	7.589	6925029	62.953 ug/ml
Spiked Amount 50.000		Recovery =	125.91%
6) S 2-Fluorobiphenyl (SURR)	8.451	4669481	63.176 ug/ml
Spiked Amount 50.000 Range 0 - 131		Recovery =	126.35%
11) S ortho-Terphenyl (SURR)	11.485	8388781	64.436 ug/ml
Spiked Amount 50.000		Recovery =	128.87%
Target Compounds			
2) T Naphthalene (C11.7)	5.930	592175	4.977 ug/ml
-----			

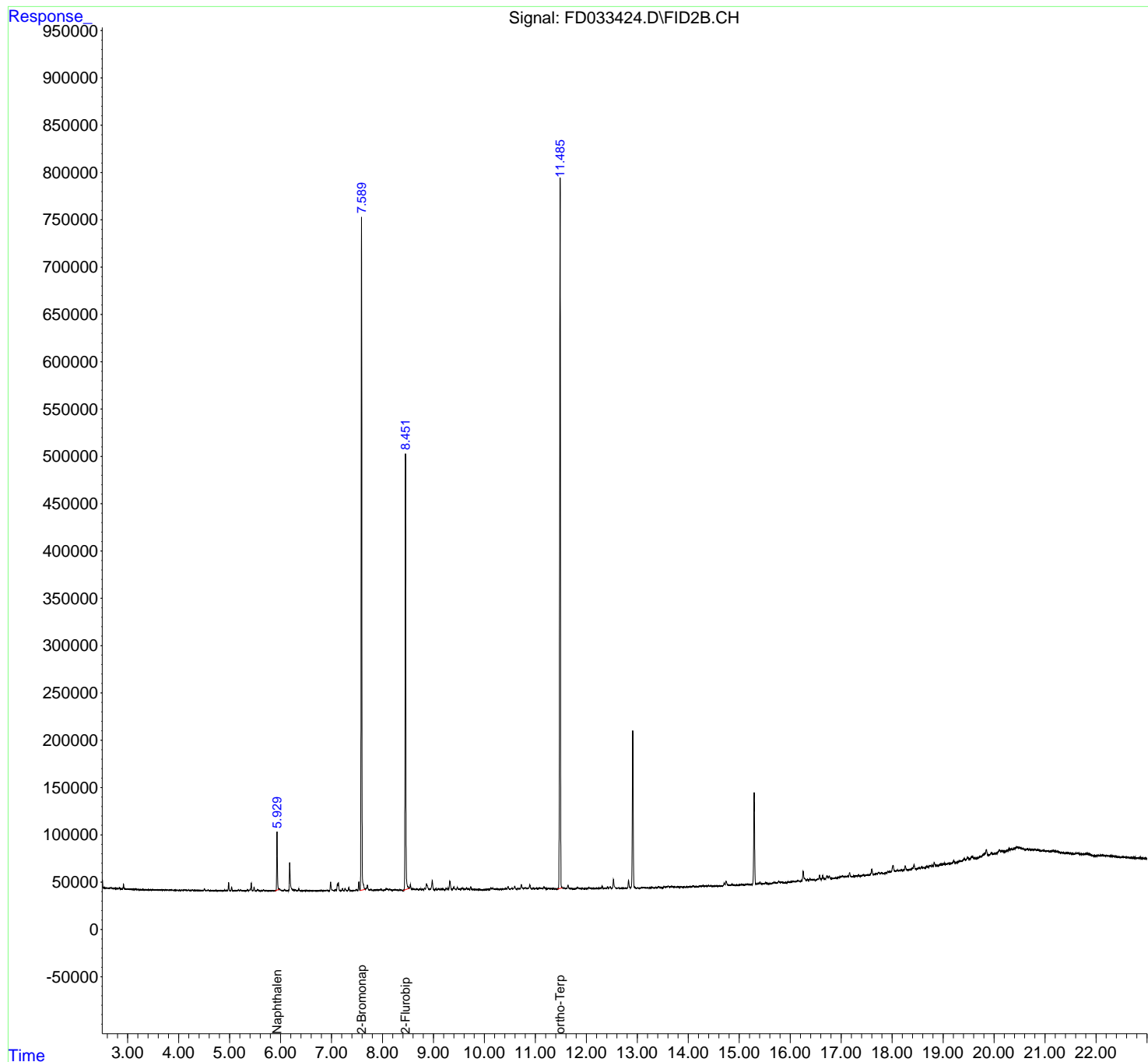
(f)=RT Delta > 1/2 Window

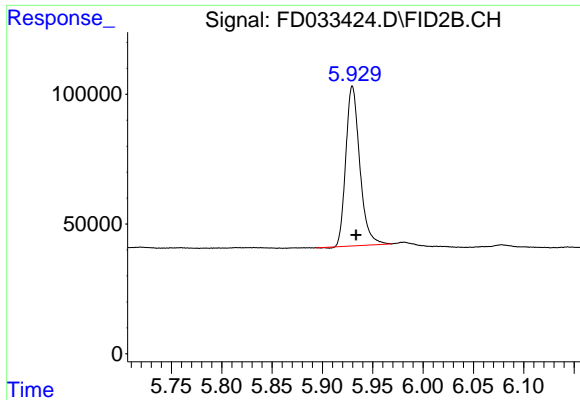
(m)=manual int.

Data Path : Z:\pestpcbsrv\HPCHEM1\FID\_D\Data\FD050920AR\  
Data File : FD033424.D  
Signal(s) : FID2B.CH  
Acq On : 10 May 2020 10:30  
Operator : DD\AJ  
Sample : L2531-06D  
Misc :  
ALS Vial : 85 Sample Multiplier: 1

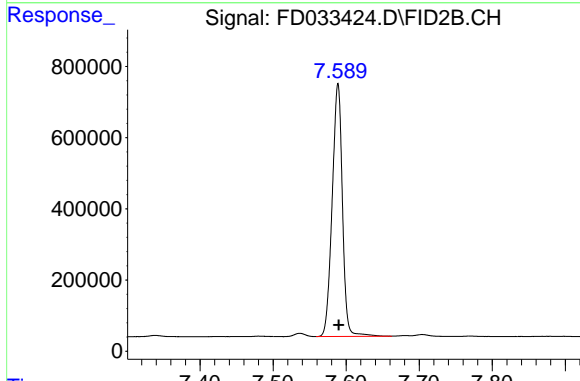
Integration File: autoint1.e  
Quant Time: May 11 02:42:30 2020  
Quant Method : Z:\pestpcbsrv\HPCHEM1\FID\_D\methods\Aromatic EPH 050620.M  
Quant Title : GC Extractables  
QLast Update : Thu May 07 12:57:17 2020  
Response via : Initial Calibration  
Integrator: ChemStation 6890 Scale Mode: Large solvent peaks clipped

Volume Inj. : 1 µl  
Signal Phase : Rxi-1ms  
Signal Info : 20M x 0.18mm x 0.18µm

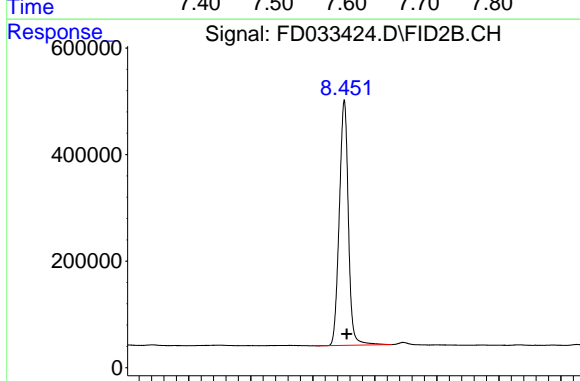




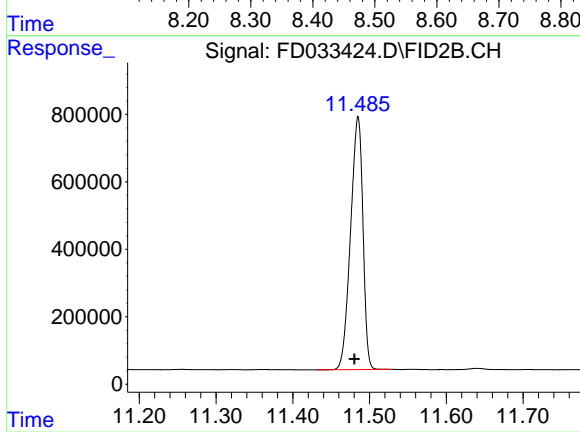
#2 Naphthalene (C11.7)  
R.T.: 5.930 min  
Delta R.T.: -0.004 min  
Response: 592175  
Conc: 4.98 ug/ml



#4 2-Bromonaphthalene (SURRE)  
R.T.: 7.589 min  
Delta R.T.: -0.001 min  
Response: 6925029  
Conc: 62.95 ug/ml



#6 2-Fluorobiphenyl (SURRE)  
R.T.: 8.451 min  
Delta R.T.: -0.004 min  
Response: 4669481  
Conc: 63.18 ug/ml



#11 ortho-Terphenyl (SURRE)  
R.T.: 11.485 min  
Delta R.T.: 0.004 min  
Response: 8388781  
Conc: 64.44 ug/ml