

Data Path : Z:\pestpcbsrv\HPCHEM1\FID_D\Data\FD050920AR\
 Data File : FD033421.D
 Signal(s) : FID2B.CH
 Acq On : 10 May 2020 8:42
 Operator : DD\AJ
 Sample : PB128737BL
 Misc :
 ALS Vial : 82 Sample Multiplier: 1

Integration File: autoint1.e
 Quant Time: May 11 02:41:58 2020
 Quant Method : Z:\pestpcbsrv\HPCHEM1\FID_D\methods\Aromatic EPH 050620.M
 Quant Title : GC Extractables
 QLast Update : Thu May 07 12:57:17 2020
 Response via : Initial Calibration
 Integrator: ChemStation 6890 Scale Mode: Large solvent peaks clipped

Volume Inj. : 1 µl
 Signal Phase : Rxi-1ms
 Signal Info : 20M x 0.18mm x 0.18µm

Compound	R.T.	Response	Conc Units

System Monitoring Compounds			
4) S 2-Bromonaphthalene (S...	7.588	6527616	59.341 ug/ml
Spiked Amount 50.000		Recovery =	118.68%
6) S 2-Fluorobiphenyl (SURR)	8.451	4475198	60.548 ug/ml
Spiked Amount 50.000 Range 0 - 131		Recovery =	121.10%
11) S ortho-Terphenyl (SURR)	11.486	9667737	74.260 ug/ml
Spiked Amount 50.000		Recovery =	148.52%

Target Compounds

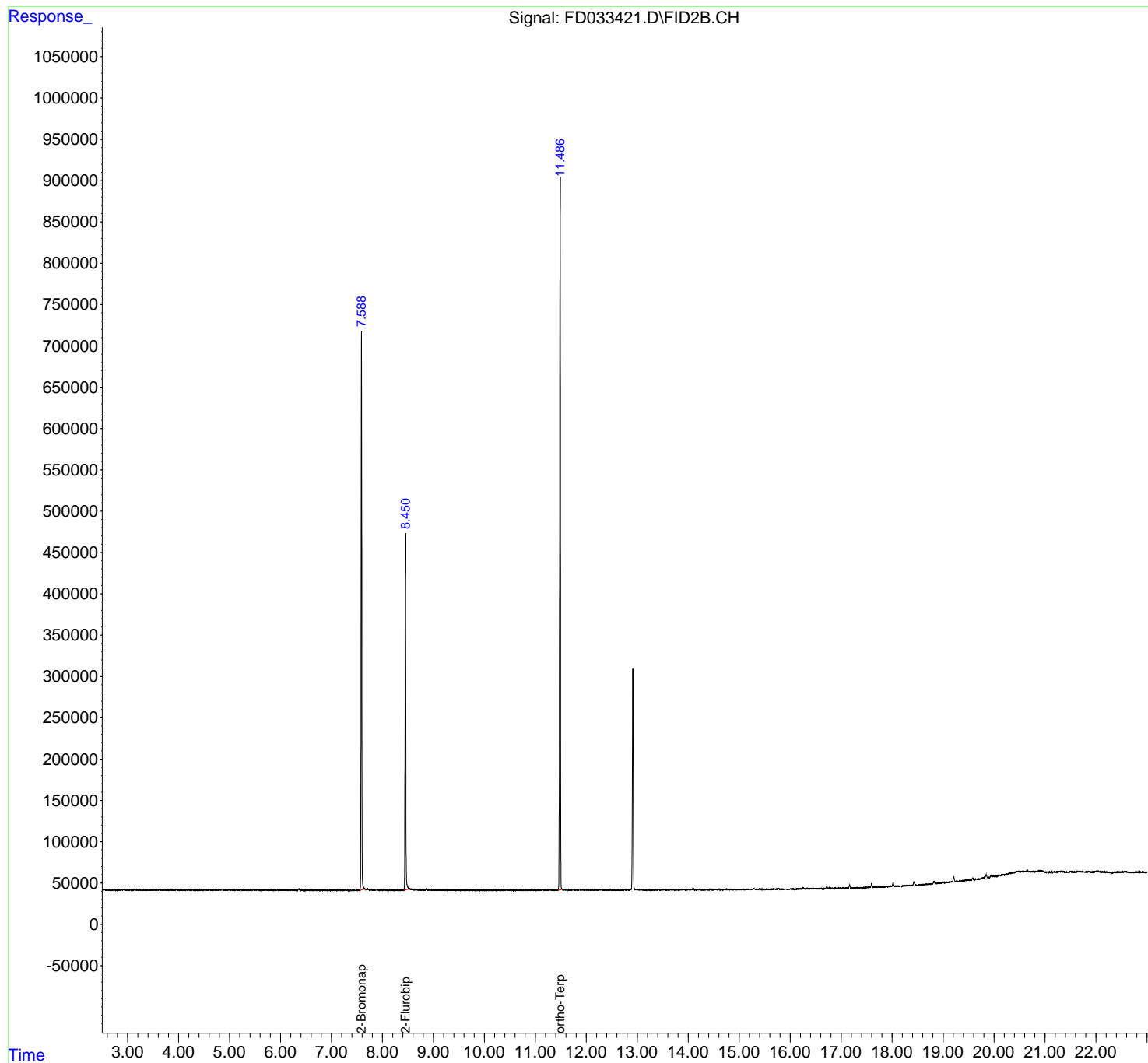
(f)=RT Delta > 1/2 Window

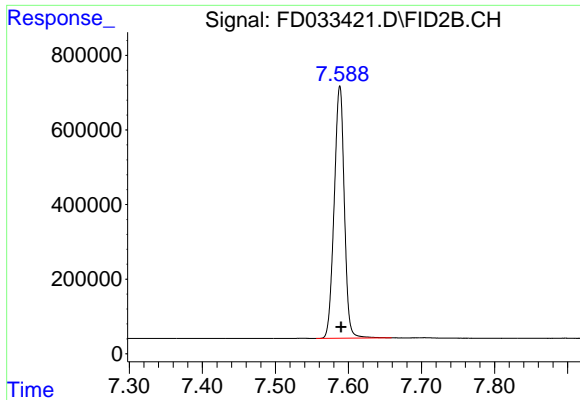
(m)=manual int.

Data Path : Z:\pestpcbsrv\HPCHEM1\FID_D\Data\FD050920AR\
Data File : FD033421.D
Signal(s) : FID2B.CH
Acq On : 10 May 2020 8:42
Operator : DD\AJ
Sample : PB128737BL
Misc :
ALS Vial : 82 Sample Multiplier: 1

Integration File: autoint1.e
Quant Time: May 11 02:41:58 2020
Quant Method : Z:\pestpcbsrv\HPCHEM1\FID_D\methods\Aromatic EPH 050620.M
Quant Title : GC Extractables
QLast Update : Thu May 07 12:57:17 2020
Response via : Initial Calibration
Integrator: ChemStation 6890 Scale Mode: Large solvent peaks clipped

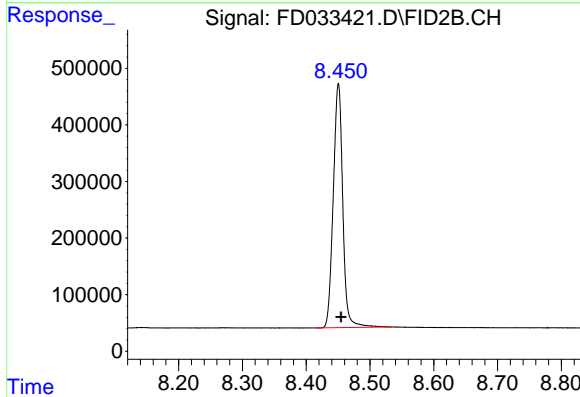
Volume Inj. : 1 µl
Signal Phase : Rxi-1ms
Signal Info : 20M x 0.18mm x 0.18µm





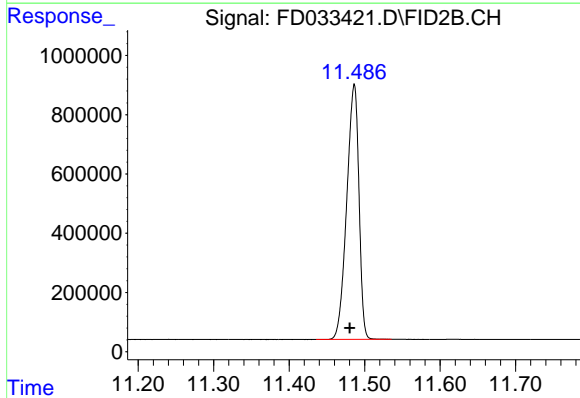
#4 2-Bromonaphthalene (SURR)

R.T.: 7.588 min
Delta R.T.: -0.002 min
Response: 6527616
Conc: 59.34 ug/ml



#6 2-Fluorobiphenyl (SURR)

R.T.: 8.451 min
Delta R.T.: -0.004 min
Response: 4475198
Conc: 60.55 ug/ml



#11 ortho-Terphenyl (SURR)

R.T.: 11.486 min
Delta R.T.: 0.006 min
Response: 9667737
Conc: 74.26 ug/ml