

Data Path : Z:\pestpcbsrv\HPCHEM1\FID\_D\Data\FD051024AR\  
 Data File : FD047701.D  
 Signal(s) : FID2B.ch  
 Acq On : 10 May 2024 13:50  
 Operator : YP/AJ  
 Sample : 20 PPM AROMATIC HC STD  
 Misc :  
 ALS Vial : 52 Sample Multiplier: 1

Instrument :  
 FID\_D  
 ClientSampleId :

Integration File: autoint1.e  
 Quant Time: May 11 00:55:07 2024  
 Quant Method : Z:\pestpcbsrv\HPCHEM1\FID\_D\methods\Aromatic EPH 042924.M  
 Quant Title : GC Extractables  
 QLast Update : Mon Apr 29 17:13:11 2024  
 Response via : Initial Calibration  
 Integrator: ChemStation

Volume Inj. : 1 µl  
 Signal Phase : Rxi-1ms  
 Signal Info : 20M x 0.18mm x 0.18µm

Compound	R.T.	Response	Conc Units
-----			
System Monitoring Compounds			
4) S 2-Bromonaphthalene (S...	7.461	3414442	21.772 ug/ml
Spiked Amount 50.000		Recovery =	43.54%
6) S 2-Fluorobiphenyl (SURR)	8.315	2269144	21.693 ug/ml
Spiked Amount 50.000 Range 0 - 131		Recovery =	43.39%
11) S ortho-Terphenyl (SURR)	11.356	3982329	21.235 ug/ml
Spiked Amount 50.000		Recovery =	42.47%
Target Compounds			
1) T 1,2,3-Trimethylbenzen...	4.273	3558126	22.007 ug/ml
2) T Naphthalene (C11.7)	5.799	3718704	21.977 ug/ml
3) T 2-Methylnaphthalene (...)	6.849	3752487	22.029 ug/ml
5) T Acenaphthylene (C15.06)	8.118	3447285	21.138 ug/ml
7) T Acenaphthene (C15.5)	8.414	3666960	21.815 ug/ml
8) T Fluorene (C16.55)	9.193	3591107	21.589 ug/ml
9) T Phenanthrene (C19.36)	10.584	3509896	21.439 ug/ml
10) T Anthracene (C19.43)	10.657	2878153	19.215 ug/ml
12) T Fluoranthene (C21.85)	12.390	3481192	20.979 ug/ml
13) T Pyrene (C20.8)	12.684	3370250	20.713 ug/ml
14) T Benzo[a]anthracene (C...	14.554	2965497	20.315 ug/ml
15) T Chrysene (C27.41)	14.596	3203748	20.330 ug/ml
16) T benzo[b]fluoranthene ...	16.102	3035246	20.322 ug/ml
17) T Bnezo[k]fluoranthene ...	16.133	3045592	20.230 ug/ml
18) T Benzo[a]pyrene (C31.34)	16.477	2956644	20.491 ug/ml
19) T Indeno[1,2,3-cd]pyren...	17.841	2807606	20.687 ug/ml
20) T Dibenz[a,h]anthracene...	17.881	2980510	20.817 ug/ml
21) T Benzo[g,h,i]perylene ...	18.093	2922220	21.284 ug/ml

(f)=RT Delta > 1/2 Window

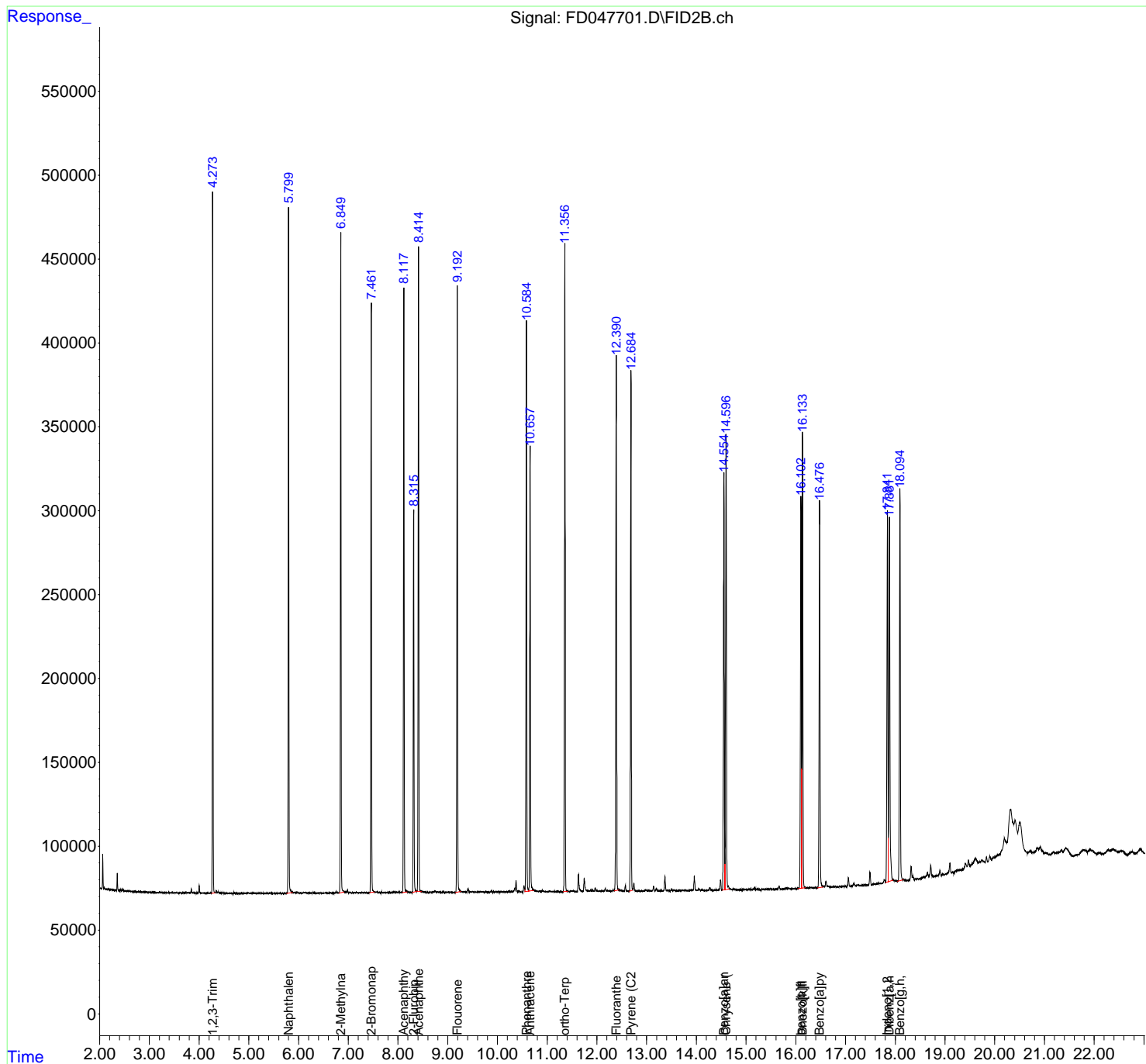
(m)=manual int.

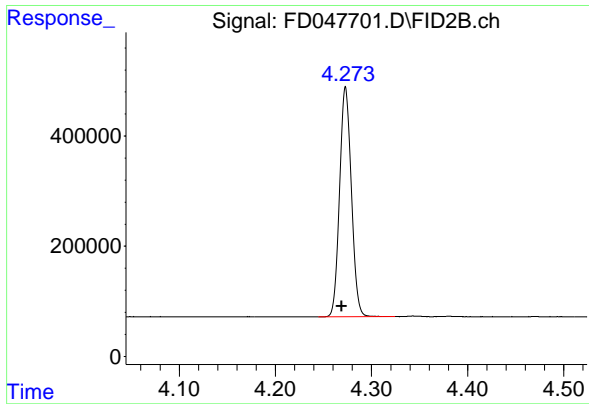
Data Path : Z:\pestpcbsrv\HPCHEM1\FID\_D\Data\FD051024AR\  
 Data File : FD047701.D  
 Signal(s) : FID2B.ch  
 Acq On : 10 May 2024 13:50  
 Operator : YP/AJ  
 Sample : 20 PPM AROMATIC HC STD  
 Misc :  
 ALS Vial : 52 Sample Multiplier: 1

Instrument :  
 FID\_D  
 ClientSampleId :

Integration File: autoint1.e  
 Quant Time: May 11 00:55:07 2024  
 Quant Method : Z:\pestpcbsrv\HPCHEM1\FID\_D\methods\Aromatic EPH 042924.M  
 Quant Title : GC Extractables  
 QLast Update : Mon Apr 29 17:13:11 2024  
 Response via : Initial Calibration  
 Integrator: ChemStation

Volume Inj. : 1 µl  
 Signal Phase : Rxi-1ms  
 Signal Info : 20M x 0.18mm x 0.18µm

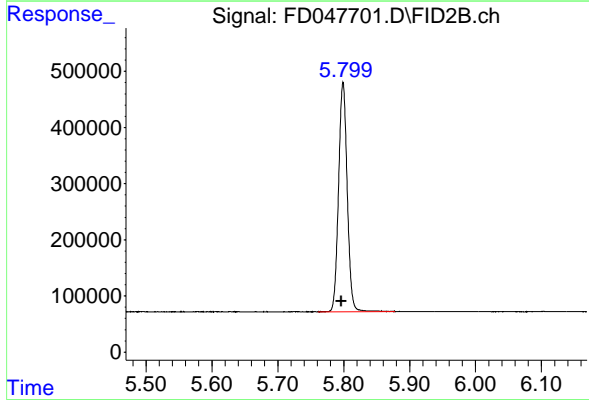




#1 1,2,3-Trimethylbenzene (C10.1)

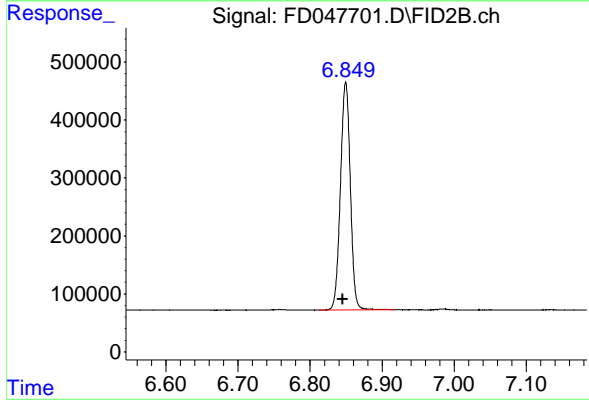
R.T.: 4.273 min  
Delta R.T.: 0.004 min  
Response: 3558126  
Conc: 22.01 ug/ml

Instrument :  
FID\_D  
ClientSampleId :



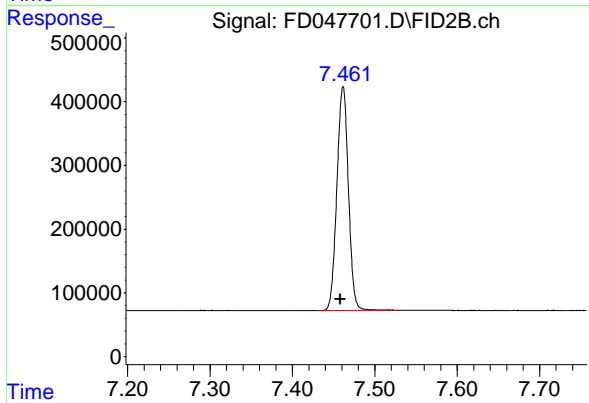
#2 Naphthalene (C11.7)

R.T.: 5.799 min  
Delta R.T.: 0.002 min  
Response: 3718704  
Conc: 21.98 ug/ml



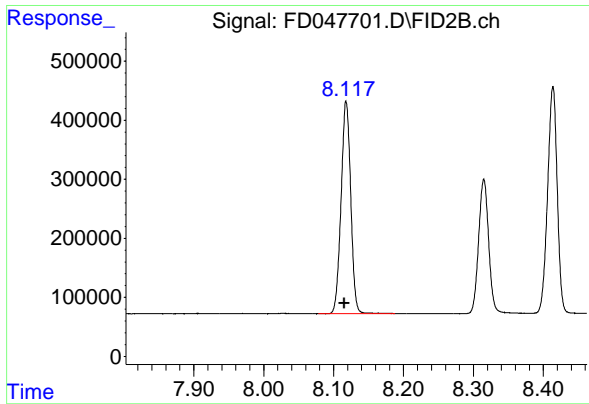
#3 2-Methylnaphthalene (C12.89)

R.T.: 6.849 min  
Delta R.T.: 0.004 min  
Response: 3752487  
Conc: 22.03 ug/ml



#4 2-Bromonaphthalene (SURR)

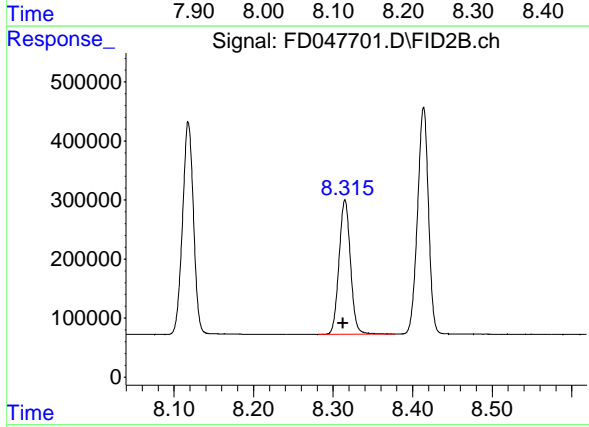
R.T.: 7.461 min  
Delta R.T.: 0.003 min  
Response: 3414442  
Conc: 21.77 ug/ml



#5 Acenaphthylene (C15.06)

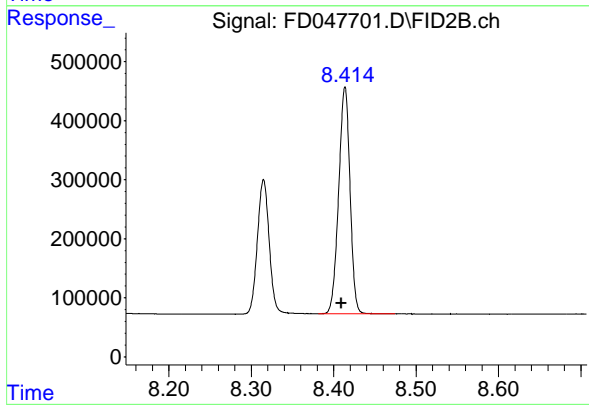
R.T.: 8.118 min  
 Delta R.T.: 0.003 min  
 Response: 3447285  
 Conc: 21.14 ug/ml

Instrument : FID\_D  
 ClientSampleId :



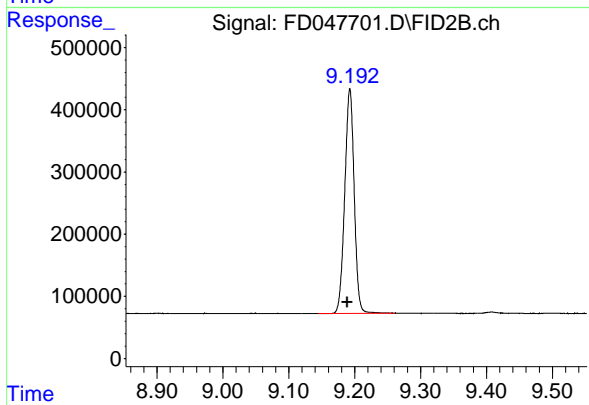
#6 2-Fluorobiphenyl (SURR)

R.T.: 8.315 min  
 Delta R.T.: 0.002 min  
 Response: 2269144  
 Conc: 21.69 ug/ml



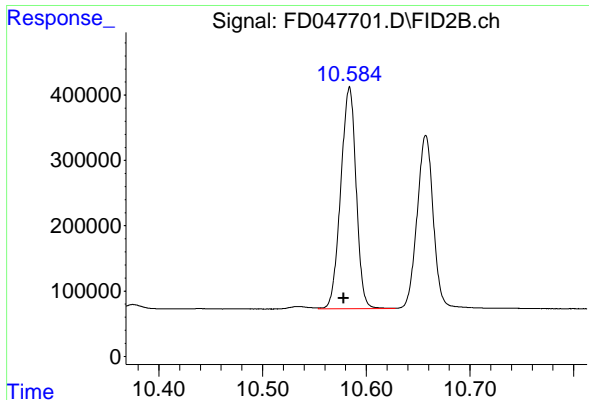
#7 Acenaphthene (C15.5)

R.T.: 8.414 min  
 Delta R.T.: 0.004 min  
 Response: 3666960  
 Conc: 21.81 ug/ml



#8 Fluorene (C16.55)

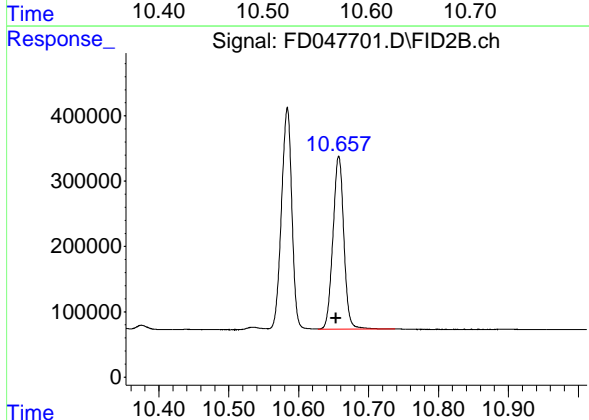
R.T.: 9.193 min  
 Delta R.T.: 0.004 min  
 Response: 3591107  
 Conc: 21.59 ug/ml



#9 Phenanthrene (C19.36)

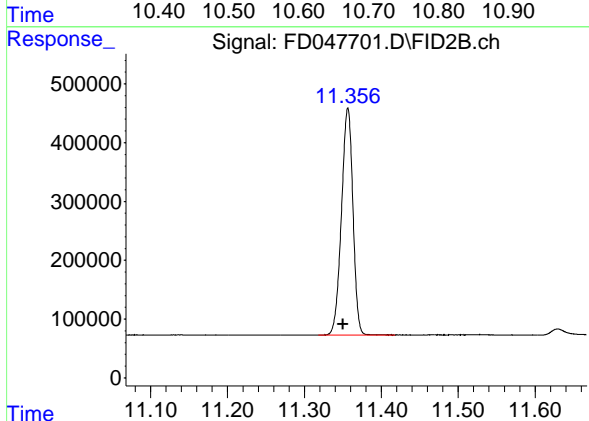
R.T.: 10.584 min  
 Delta R.T.: 0.005 min  
 Response: 3509896  
 Conc: 21.44 ug/ml

Instrument :  
 FID\_D  
 ClientSampleId :



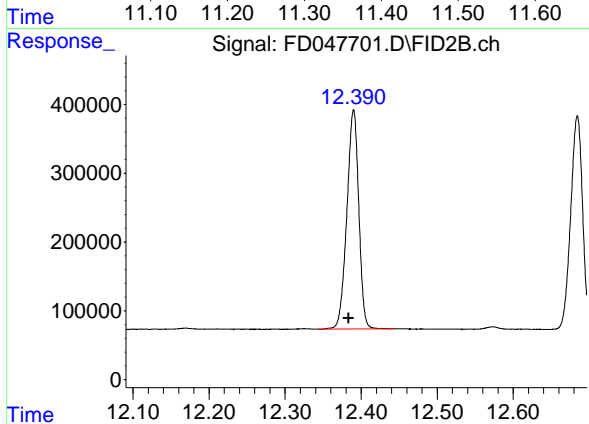
#10 Anthracene (C19.43)

R.T.: 10.657 min  
 Delta R.T.: 0.004 min  
 Response: 2878153  
 Conc: 19.22 ug/ml



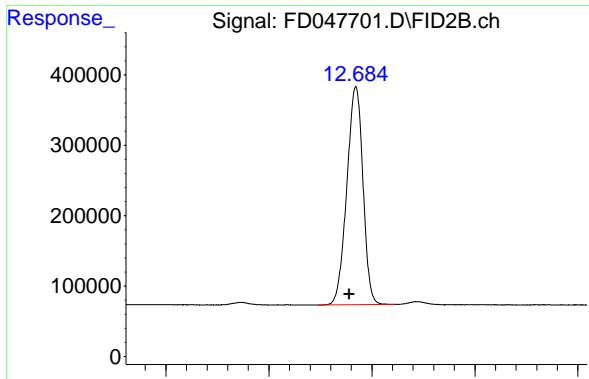
#11 ortho-Terphenyl (SURR)

R.T.: 11.356 min  
 Delta R.T.: 0.006 min  
 Response: 3982329  
 Conc: 21.24 ug/ml



#12 Fluoranthene (C21.85)

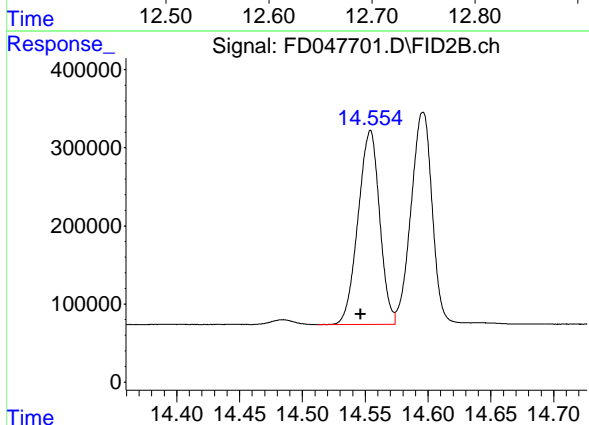
R.T.: 12.390 min  
 Delta R.T.: 0.006 min  
 Response: 3481192  
 Conc: 20.98 ug/ml



#13 Pyrene (C20.8)

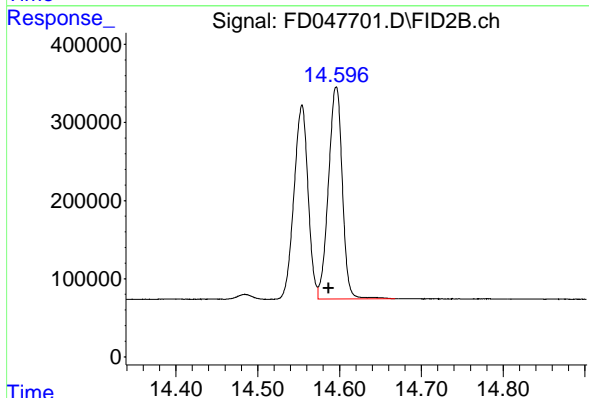
R.T.: 12.684 min  
Delta R.T.: 0.006 min  
Response: 3370250  
Conc: 20.71 ug/ml

Instrument : FID\_D  
ClientSampleId :



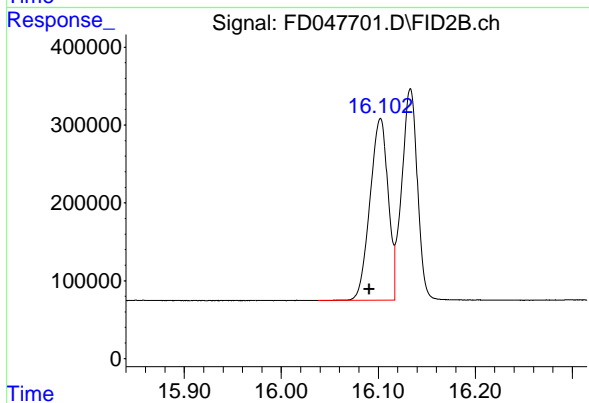
#14 Benzo[a]anthracene (C26.37)

R.T.: 14.554 min  
Delta R.T.: 0.007 min  
Response: 2965497  
Conc: 20.32 ug/ml



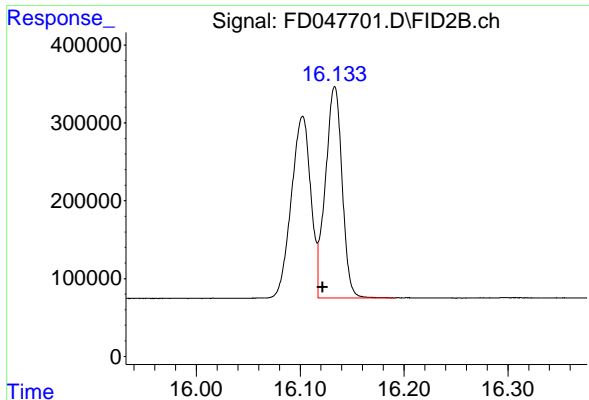
#15 Chrysene (C27.41)

R.T.: 14.596 min  
Delta R.T.: 0.009 min  
Response: 3203748  
Conc: 20.33 ug/ml



#16 benzo[b]fluoranthene (C30.41)

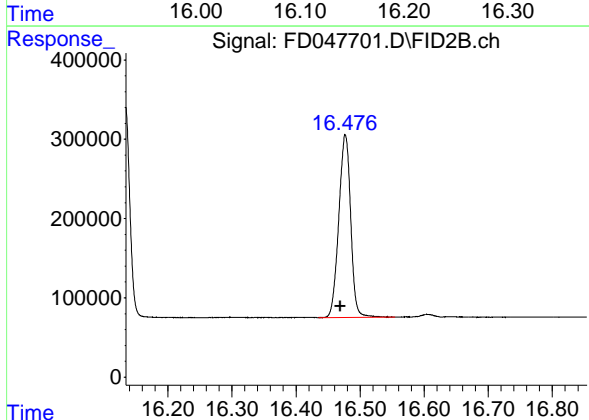
R.T.: 16.102 min  
Delta R.T.: 0.011 min  
Response: 3035246  
Conc: 20.32 ug/ml



#17 Bnezo[k]fluoranthene (C30.14)

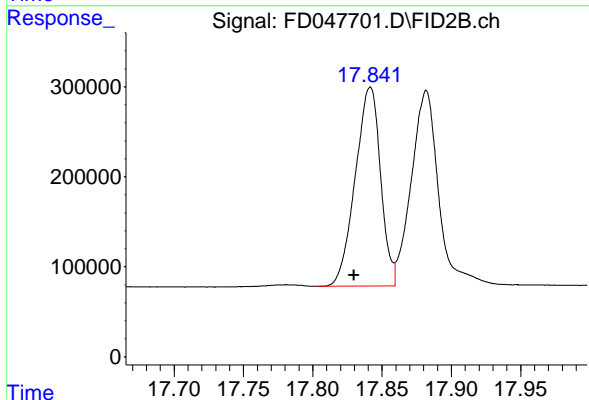
R.T.: 16.133 min  
 Delta R.T.: 0.012 min  
 Response: 3045592  
 Conc: 20.23 ug/ml

Instrument :  
 FID\_D  
 ClientSampleId :



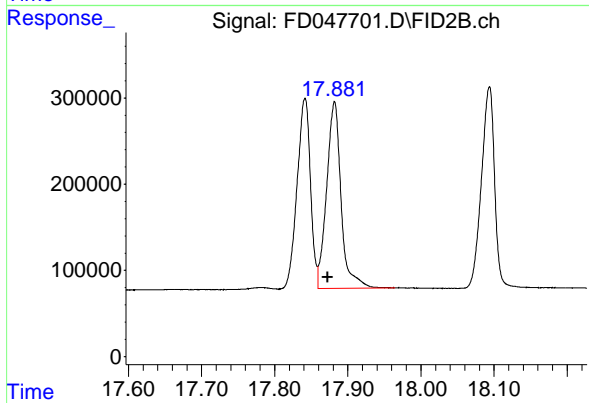
#18 Benzo[a]pyrene (C31.34)

R.T.: 16.477 min  
 Delta R.T.: 0.008 min  
 Response: 2956644  
 Conc: 20.49 ug/ml



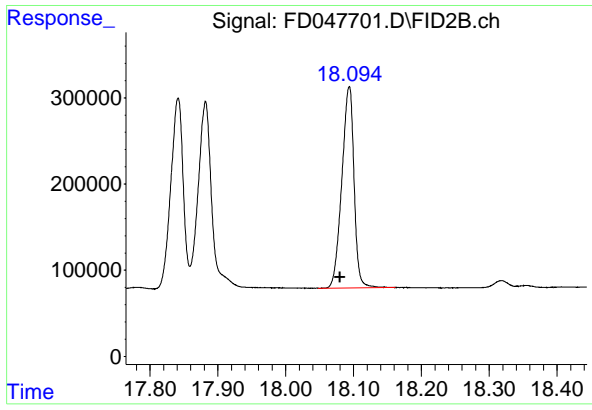
#19 Indeno[1,2,3-cd]pyrene (C35.01)

R.T.: 17.841 min  
 Delta R.T.: 0.011 min  
 Response: 2807606  
 Conc: 20.69 ug/ml



#20 Dibenz[a,h]anthracene (C30.36)

R.T.: 17.881 min  
 Delta R.T.: 0.009 min  
 Response: 2980510  
 Conc: 20.82 ug/ml



#21 Benzo[g,h,i]perylene (C34.01)

R.T.: 18.093 min  
Delta R.T.: 0.013 min  
Response: 2922220  
Conc: 21.28 ug/ml

Instrument :

FID\_D

ClientSampleId :