

Data Path : Z:\pestpcbsrv\HPCHEM1\FID\_D\Data\FD051121AL\  
 Data File : FD037466.D  
 Signal(s) : FID2B.CH  
 Acq On : 11 May 2021 19:35  
 Operator : DD\AJ  
 Sample : PB136208BL  
 Misc : MDL-SOIL-BL  
 ALS Vial : 56 Sample Multiplier: 1

Integration File: autoint1.e  
 Quant Time: May 12 04:22:41 2021  
 Quant Method : Z:\pestpcbsrv\HPCHEM1\FID\_D\methods\Alaphatic EPH 042121.M  
 Quant Title : GC Extractables  
 QLast Update : Thu Apr 22 03:31:40 2021  
 Response via : Initial Calibration  
 Integrator: ChemStation 6890 Scale Mode: Large solvent peaks clipped

Volume Inj. : 1 ul  
 Signal Phase : Rxi-1ms  
 Signal Info : 20M x 0.18mm x 0.18um

Compound	R.T.	Response	Conc Units
-----			
System Monitoring Compounds			
12) S 1-chlorooctadecane (S...	12.899	3541692	41.863 ug/ml
Spiked Amount	50.000	Recovery	= 83.73%

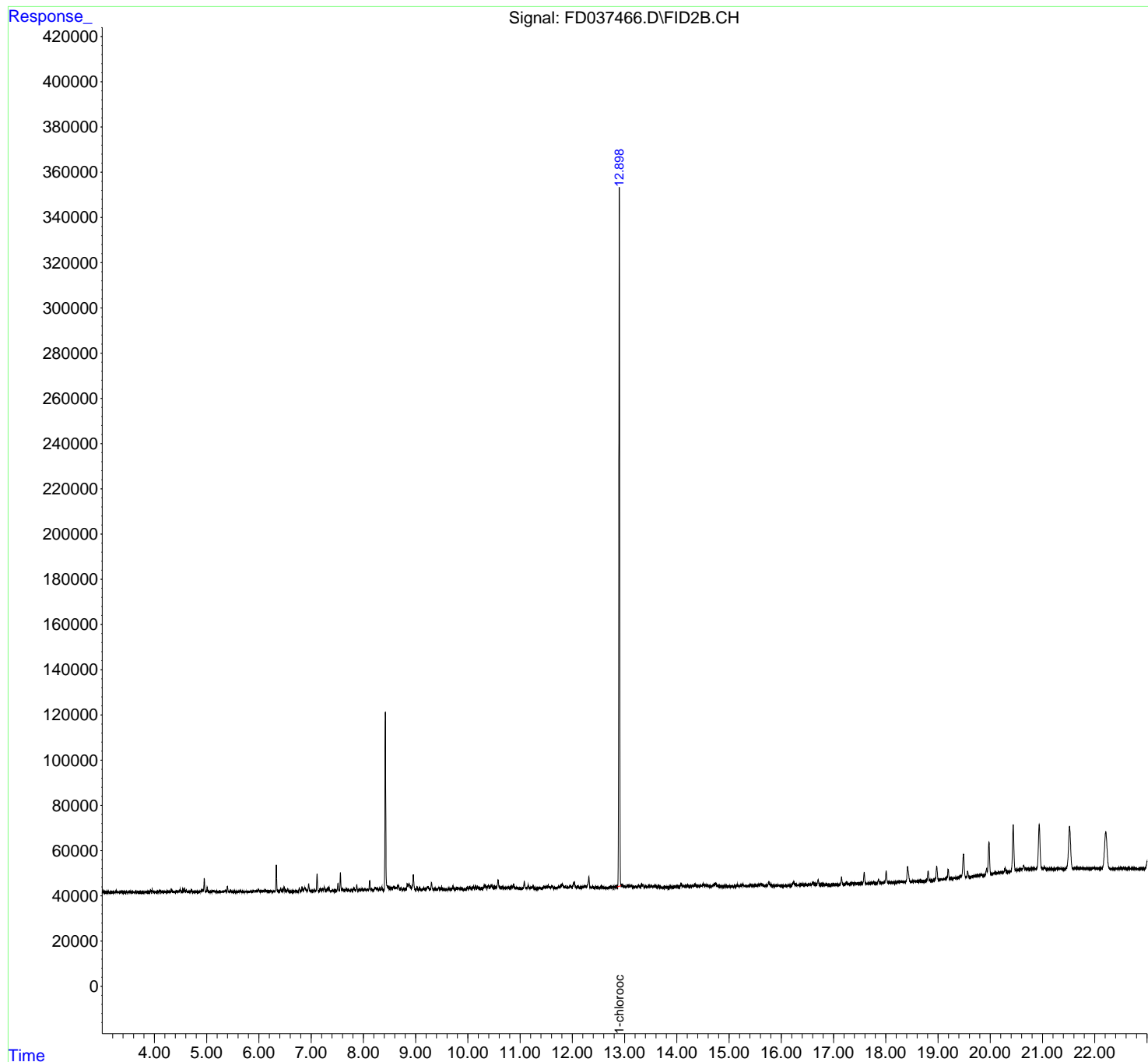
Target Compounds

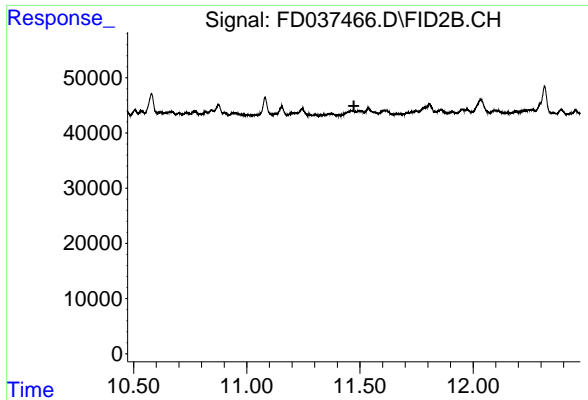
(f)=RT Delta > 1/2 Window (m)=manual int.

Data Path : Z:\pestpcbsrv\HPCHEM1\FID\_D\Data\FD051121AL\  
Data File : FD037466.D  
Signal(s) : FID2B.CH  
Acq On : 11 May 2021 19:35  
Operator : DD\AJ  
Sample : PB136208BL  
Misc : MDL-SOIL-BL  
ALS Vial : 56 Sample Multiplier: 1

Integration File: autoint1.e  
Quant Time: May 12 04:22:41 2021  
Quant Method : Z:\pestpcbsrv\HPCHEM1\FID\_D\methods\Alaphatic EPH 042121.M  
Quant Title : GC Extractables  
QLast Update : Thu Apr 22 03:31:40 2021  
Response via : Initial Calibration  
Integrator: ChemStation 6890 Scale Mode: Large solvent peaks clipped

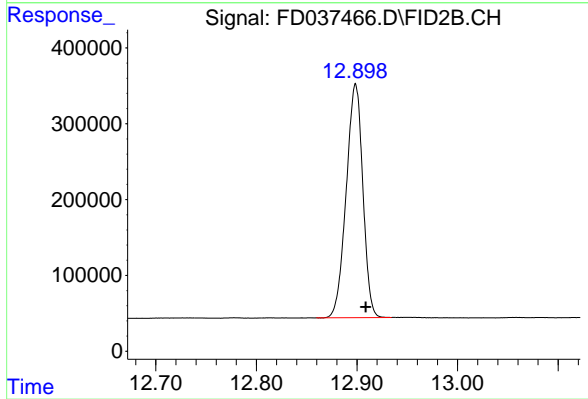
Volume Inj. : 1 ul  
Signal Phase : Rxi-1ms  
Signal Info : 20M x 0.18mm x 0.18um





#9 ortho-Terphenyl (SURR)

R.T.: 0.000 min  
Exp R.T. : 11.473 min  
Response: 0  
Conc: N.D.



#12 1-chlorooctadecane (SURR)

R.T.: 12.899 min  
Delta R.T.: -0.010 min  
Response: 3541692  
Conc: 41.86 ug/ml