

Data Path : Z:\pestpcbsrv\HPCHEM1\FID_D\Data\FD051220AR\
Data File : FD033474.D
Signal(s) : FID2B.CH
Acq On : 12 May 2020 17:37
Operator : DD\AJ
Sample : I.BLK
Misc :
ALS Vial : 51 Sample Multiplier: 1

Instrument :
FID_D
ClientSampleId :
I.BLK

Integration File: sample.E
Quant Time: May 13 04:10:49 2020
Quant Method : Z:\pestpcbsrv\HPCHEM1\FID_D\methods\Aromatic EPH 051120.M
Quant Title : GC Extractables
QLast Update : Tue May 12 06:50:42 2020
Response via : Initial Calibration
Integrator: ChemStation 6890 Scale Mode: Large solvent peaks clipped

Volume Inj. : 1 µl
Signal Phase : Rxi-1ms
Signal Info : 20M x 0.18mm x 0.18µm

Compound	R.T.	Response	Conc Units

System Monitoring Compounds			
Target Compounds			

(f)=RT Delta > 1/2 Window

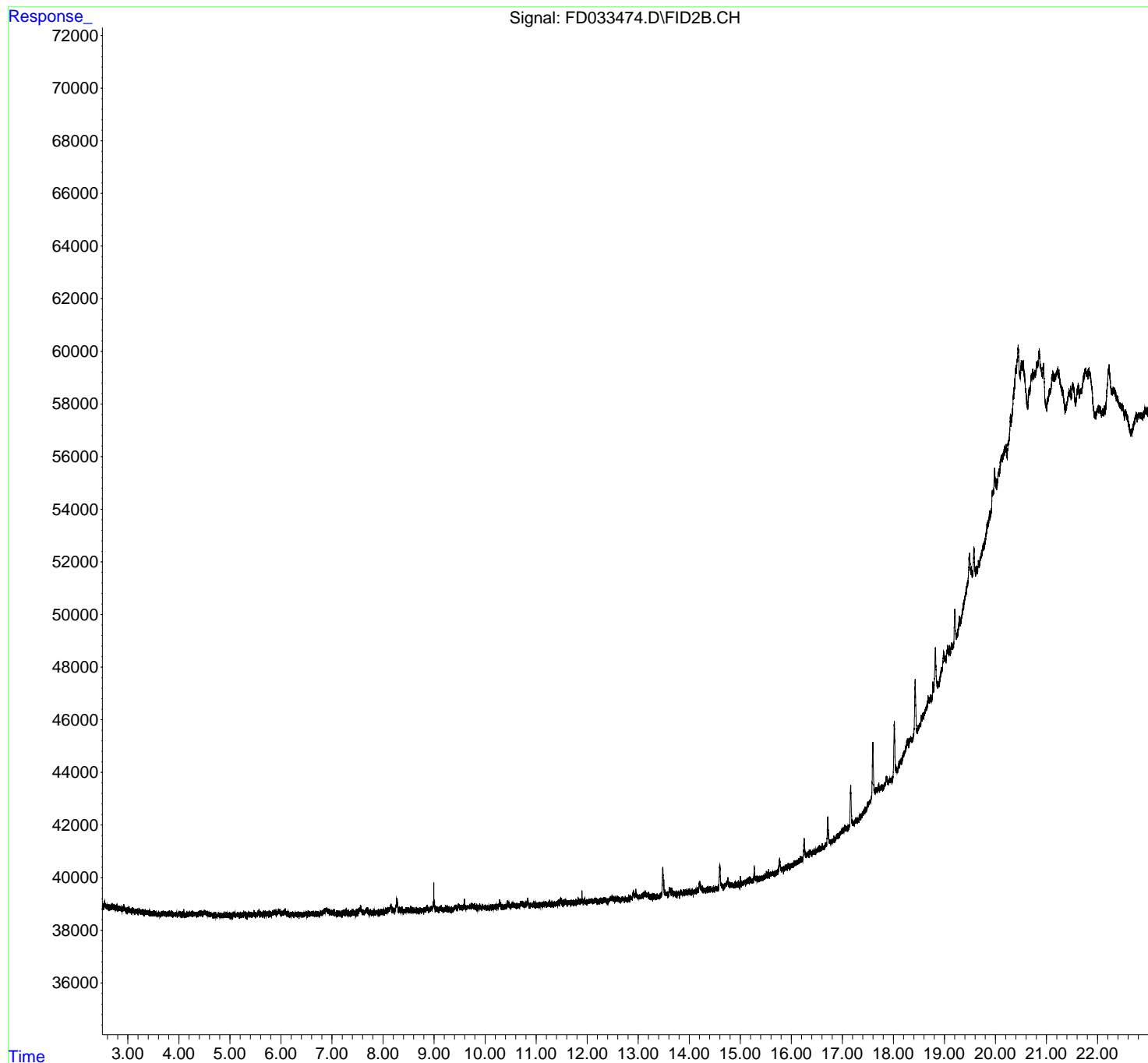
(m)=manual int.

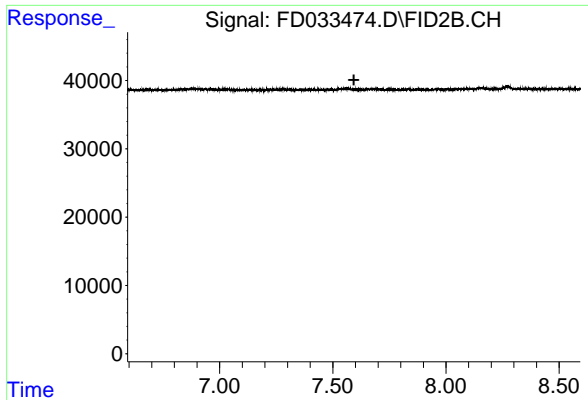
Data Path : Z:\pestpcbsrv\HPCHEM1\FID_D\Data\FD051220AR\
Data File : FD033474.D
Signal(s) : FID2B.CH
Acq On : 12 May 2020 17:37
Operator : DD\AJ
Sample : I.BLK
Misc :
ALS Vial : 51 Sample Multiplier: 1

Instrument :
FID_D
ClientSampled :
I.BLK

Integration File: sample.E
Quant Time: May 13 04:10:49 2020
Quant Method : Z:\pestpcbsrv\HPCHEM1\FID_D\methods\Aromatic EPH 051120.M
Quant Title : GC Extractables
QLast Update : Tue May 12 06:50:42 2020
Response via : Initial Calibration
Integrator: ChemStation 6890 Scale Mode: Large solvent peaks clipped

Volume Inj. : 1 μ l
Signal Phase : Rxi-1ms
Signal Info : 20M x 0.18mm x 0.18 μ m

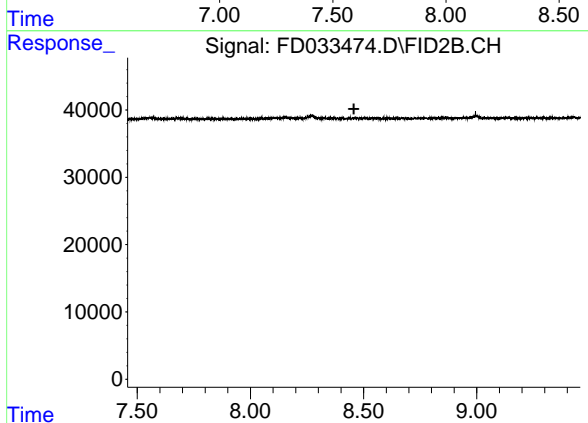




#4 2-Bromonaphthalene (SURR)

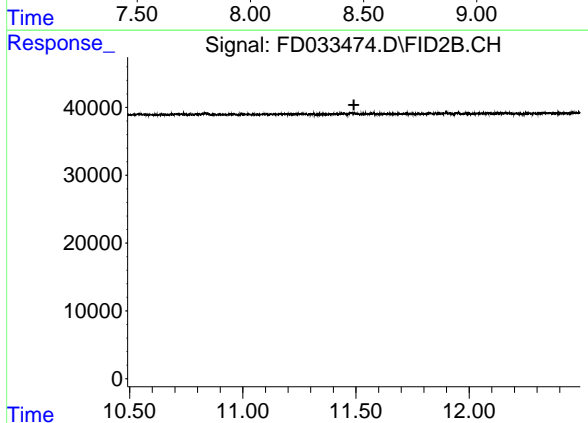
R.T.: 0.000 min
Exp R.T. : 7.593 min
Response: 0
Conc: N.D.

Instrument :
FID_D
ClientSampled :
I.BLK



#6 2-Fluorobiphenyl (SURR)

R.T.: 0.000 min
Exp R.T. : 8.457 min
Response: 0
Conc: N.D.



#11 ortho-Terphenyl (SURR)

R.T.: 0.000 min
Exp R.T. : 11.491 min
Response: 0
Conc: N.D.