

Data Path : Z:\pestpcbsrv\HPCHEM1\FID\_D\Data\FD051222AR\  
Data File : FD042419.D  
Signal(s) : FID2B.CH  
Acq On : 12 May 2022 12:30  
Operator : UA/NP  
Sample : I.BLK  
Misc :  
ALS Vial : 51 Sample Multiplier: 1

Instrument :  
FID\_D  
ClientSampleId :  
I.BLK

Integration File: sample.E  
Quant Time: May 13 03:10:21 2022  
Quant Method : Z:\pestpcbsrv\HPCHEM1\FID\_D\methods\Aromatic EPH 042122.M  
Quant Title : GC Extractables  
QLast Update : Thu Apr 21 17:32:22 2022  
Response via : Initial Calibration  
Integrator: ChemStation 6890 Scale Mode: Large solvent peaks clipped

Volume Inj. : 1 µl  
Signal Phase : Rxi-1ms  
Signal Info : 20M x 0.18mm x 0.18µm

Compound	R.T.	Response	Conc Units
-----			
System Monitoring Compounds			
Target Compounds			
-----			

(f)=RT Delta > 1/2 Window

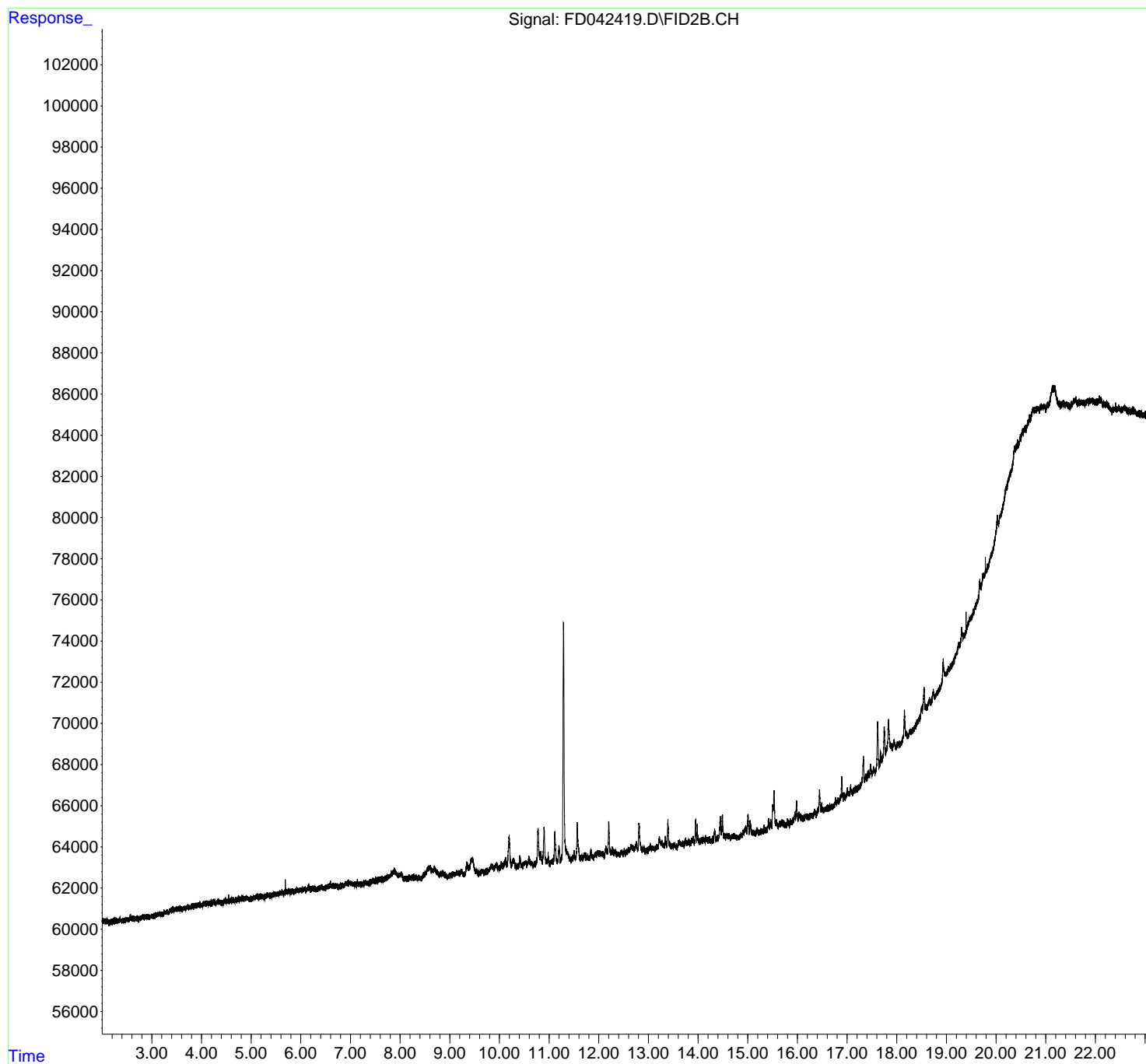
(m)=manual int.

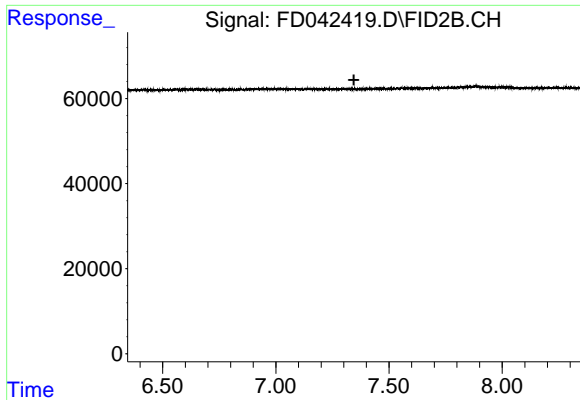
Data Path : Z:\pestpcbsrv\HPCHEM1\FID\_D\Data\FD051222AR\  
Data File : FD042419.D  
Signal(s) : FID2B.CH  
Acq On : 12 May 2022 12:30  
Operator : UA/NP  
Sample : I.BLK  
Misc :  
ALS Vial : 51 Sample Multiplier: 1

Instrument :  
FID\_D  
ClientSampleId :  
I.BLK

Integration File: sample.E  
Quant Time: May 13 03:10:21 2022  
Quant Method : Z:\pestpcbsrv\HPCHEM1\FID\_D\methods\Aromatic EPH 042122.M  
Quant Title : GC Extractables  
QLast Update : Thu Apr 21 17:32:22 2022  
Response via : Initial Calibration  
Integrator: ChemStation 6890 Scale Mode: Large solvent peaks clipped

Volume Inj. : 1  $\mu$ l  
Signal Phase : Rxi-1ms  
Signal Info : 20M x 0.18mm x 0.18 $\mu$ m

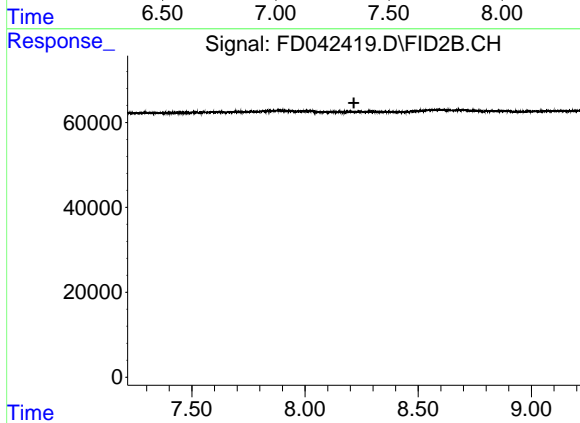




#4 2-Bromonaphthalene (SURR)

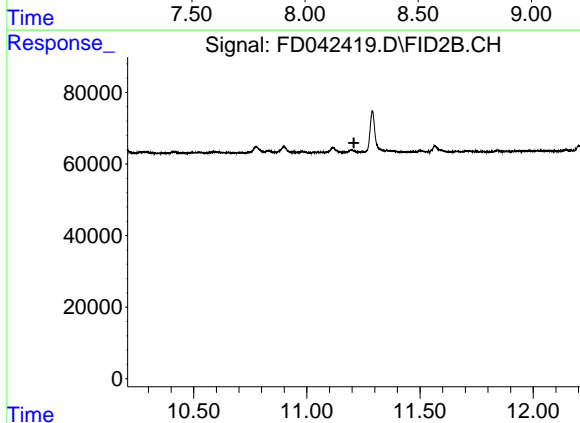
R.T.: 0.000 min  
 Exp R.T. : 7.345 min  
 Response: 0  
 Conc: N.D.

Instrument :  
 FID\_D  
 ClientSampleId :  
 I.BLK



#6 2-Fluorobiphenyl (SURR)

R.T.: 0.000 min  
 Exp R.T. : 8.216 min  
 Response: 0  
 Conc: N.D.



#11 ortho-Terphenyl (SURR)

R.T.: 0.000 min  
 Exp R.T. : 11.208 min  
 Response: 0  
 Conc: N.D.