

Data Path : Z:\pestpcbsrv\HPCHEM1\FID_D\Data\FD051622AR\
Data File : FD042489.D
Signal(s) : FID2B.CH
Acq On : 17 May 2022 00:53
Operator : UA/NP
Sample : I.BLK
Misc :
ALS Vial : 51 Sample Multiplier: 1

Instrument :
FID_D
ClientSampleId :
I.BLK

Integration File: autoint1.e
Quant Time: May 17 03:58:44 2022
Quant Method : Z:\pestpcbsrv\HPCHEM1\FID_D\methods\Aromatic EPH 042122.M
Quant Title : GC Extractables
QLast Update : Thu Apr 21 17:32:22 2022
Response via : Initial Calibration
Integrator: ChemStation 6890 Scale Mode: Large solvent peaks clipped

Volume Inj. : 1 µl
Signal Phase : Rxi-1ms
Signal Info : 20M x 0.18mm x 0.18µm

Compound	R.T.	Response	Conc Units

System Monitoring Compounds			
Target Compounds			

(f)=RT Delta > 1/2 Window

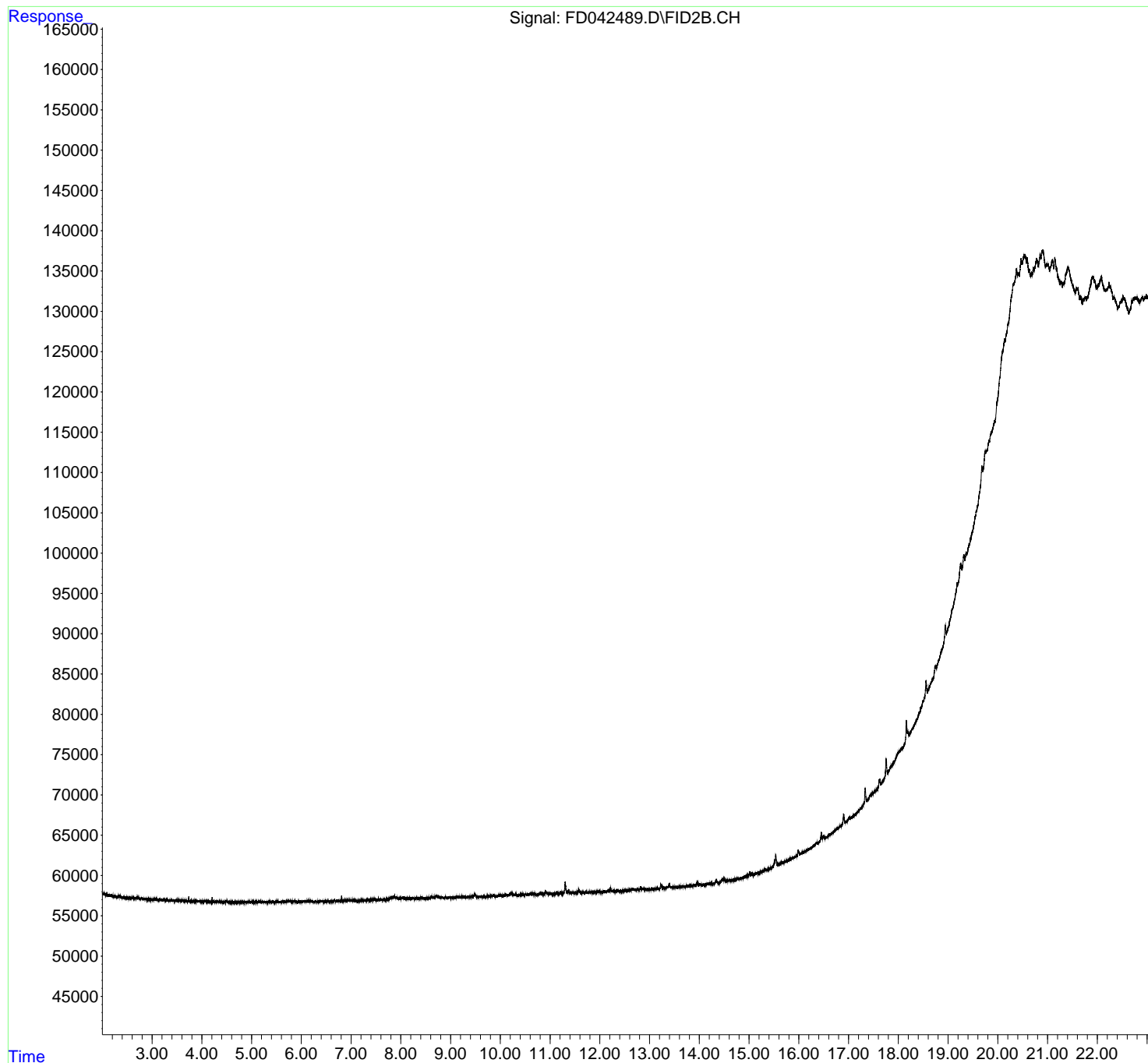
(m)=manual int.

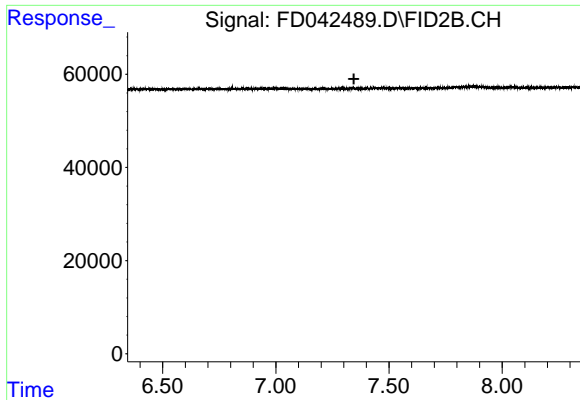
Data Path : Z:\pestpcbsrv\HPCHEM1\FID_D\Data\FD051622AR\
Data File : FD042489.D
Signal(s) : FID2B.CH
Acq On : 17 May 2022 00:53
Operator : UA/NP
Sample : I.BLK
Misc :
ALS Vial : 51 Sample Multiplier: 1

Instrument :
FID_D
ClientSampleId :
I.BLK

Integration File: autoint1.e
Quant Time: May 17 03:58:44 2022
Quant Method : Z:\pestpcbsrv\HPCHEM1\FID_D\methods\Aromatic EPH 042122.M
Quant Title : GC Extractables
QLast Update : Thu Apr 21 17:32:22 2022
Response via : Initial Calibration
Integrator: ChemStation 6890 Scale Mode: Large solvent peaks clipped

Volume Inj. : 1 μ l
Signal Phase : Rxi-1ms
Signal Info : 20M x 0.18mm x 0.18 μ m

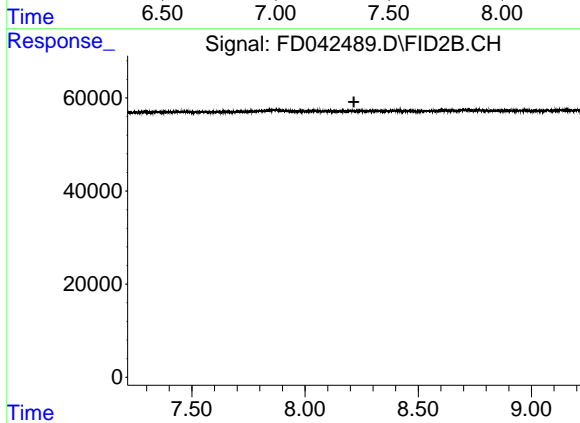




#4 2-Bromonaphthalene (SURR)

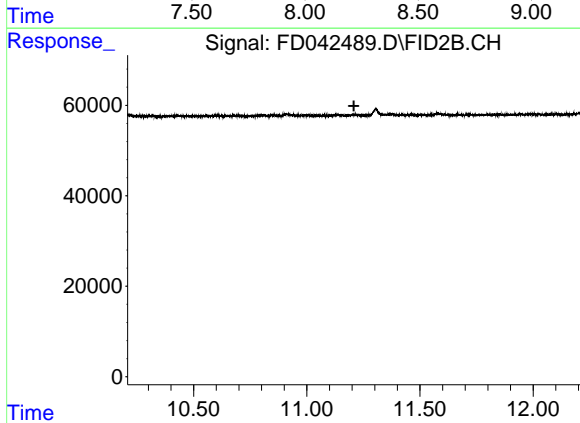
R.T.: 0.000 min
 Exp R.T. : 7.345 min
 Response: 0
 Conc: N.D.

Instrument :
 FID_D
 ClientSampleId :
 I.BLK



#6 2-Fluorobiphenyl (SURR)

R.T.: 0.000 min
 Exp R.T. : 8.216 min
 Response: 0
 Conc: N.D.



#11 ortho-Terphenyl (SURR)

R.T.: 0.000 min
 Exp R.T. : 11.208 min
 Response: 0
 Conc: N.D.