

Data Path : Z:\pestpcbsrv\HPCHEM1\FID_D\Data\FD052621AL\
 Data File : FD037596.D
 Signal(s) : FID2B.CH
 Acq On : 26 May 2021 20:36
 Operator : DD\AJ
 Sample : M2521-04DL 10X
 Misc :
 ALS Vial : 60 Sample Multiplier: 1

Integration File: autoint1.e
 Quant Time: May 27 01:16:33 2021
 Quant Method : Z:\pestpcbsrv\HPCHEM1\FID_D\methods\Alaphatic EPH 051321.M
 Quant Title : GC Extractables
 QLast Update : Fri May 14 02:07:09 2021
 Response via : Initial Calibration
 Integrator: ChemStation 6890 Scale Mode: Large solvent peaks clipped

Volume Inj. : 1 ul
 Signal Phase : Rxi-1ms
 Signal Info : 20M x 0.18mm x 0.18um

Compound	R.T.	Response	Conc Units

System Monitoring Compounds			
9) S ortho-Terphenyl (SURR)	11.464	457382	3.900 ug/ml
Spiked Amount	50.000	Recovery =	7.80%
12) S 1-chlorooctadecane (S...	12.899	394674	4.343 ug/mlm
Spiked Amount	50.000	Recovery =	8.69%

Target Compounds

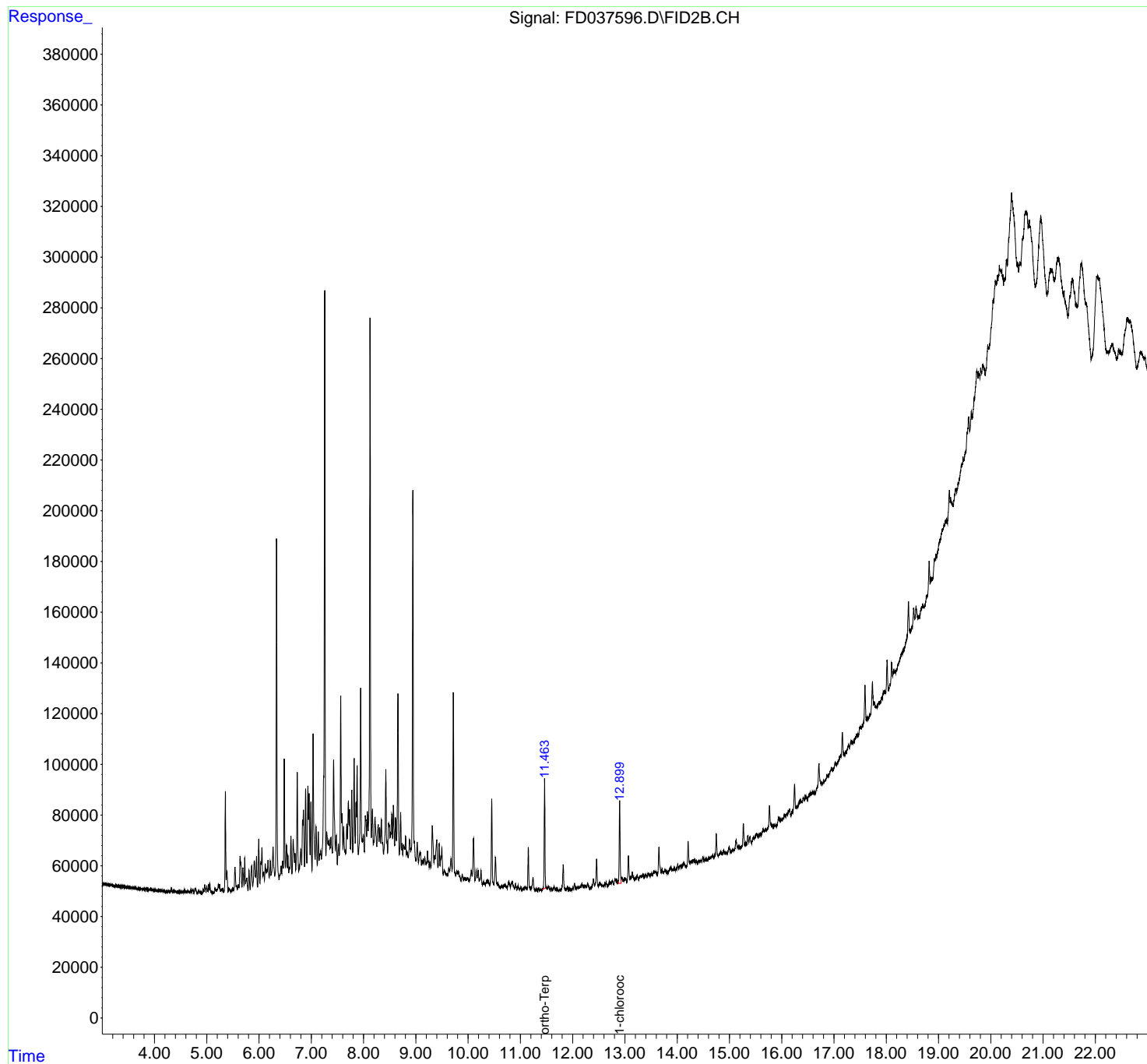
(f)=RT Delta > 1/2 Window

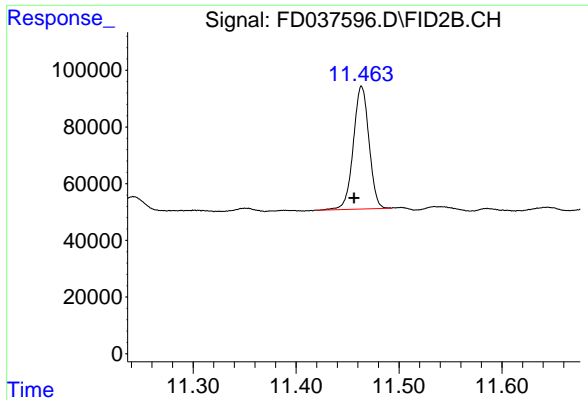
(m)=manual int.

Data Path : Z:\pestpcbsrv\HPCHEM1\FID_D\Data\FD052621AL\
Data File : FD037596.D
Signal(s) : FID2B.CH
Acq On : 26 May 2021 20:36
Operator : DD\AJ
Sample : M2521-04DL 10X
Misc :
ALS Vial : 60 Sample Multiplier: 1

Integration File: autoint1.e
Quant Time: May 27 01:16:33 2021
Quant Method : Z:\pestpcbsrv\HPCHEM1\FID_D\methods\Alaphatic EPH 051321.M
Quant Title : GC Extractables
QLast Update : Fri May 14 02:07:09 2021
Response via : Initial Calibration
Integrator: ChemStation 6890 Scale Mode: Large solvent peaks clipped

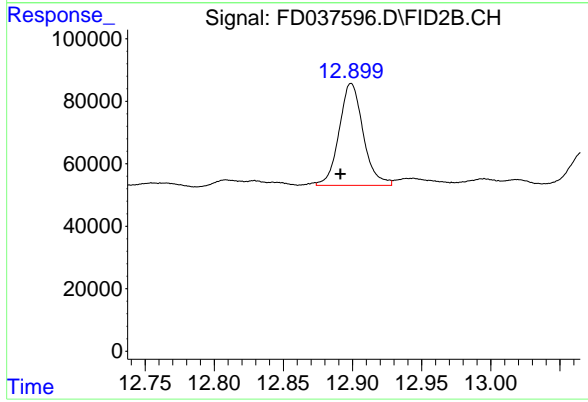
Volume Inj. : 1 ul
Signal Phase : Rxi-1ms
Signal Info : 20M x 0.18mm x 0.18um





#9 ortho-Terphenyl (SURR)

R.T.: 11.464 min
Delta R.T.: 0.007 min
Response: 457382
Conc: 3.90 ug/ml



#12 1-chlorooctadecane (SURR)

R.T.: 12.899 min
Delta R.T.: 0.008 min
Response: 394674
Conc: 4.34 ug/ml m