

Data Path : Z:\pestpcbsrv\HPCHEM1\FID_D\Data\FD052819AL\
 Data File : FD029259.D
 Signal(s) : FID2B.CH
 Acq On : 28 May 2019 12:08
 Operator : DD\AJ
 Sample : K3041-02
 Misc :
 ALS Vial : 56 Sample Multiplier: 1

Instrument :
 FID_D
 ClientSampleId :

Integration File: autoint1.e
 Quant Time: May 29 04:18:51 2019
 Quant Method : Z:\pestpcbsrv\HPCHEM1\FID_D\methods\Alaphatic EPH 051619.M
 Quant Title : GC Extractables
 QLast Update : Fri May 17 05:38:52 2019
 Response via : Initial Calibration
 Integrator: ChemStation 6890 Scale Mode: Large solvent peaks clipped

Volume Inj. : 1 ul
 Signal Phase : Rxi-1ms
 Signal Info : 20M x 0.18mm x 0.18um

Compound	R.T.	Response	Conc Units

System Monitoring Compounds			
9) S ortho-Terphenyl (SURR)	11.647	2006659	22.803 ug/ml
Spiked Amount	50.000	Recovery	= 45.61%
12) S 1-chlorooctadecane (S...	13.068	1443774	22.565 ug/ml
Spiked Amount	50.000	Recovery	= 45.13%
Target Compounds			
6) T n-Tetradecane (C14)	8.356f	142185	1.833 ug/ml
10) T n-Eicosane (C20)	12.613	164026	2.272 ug/ml
14) T n-Tetracosane (C24)	14.894	169863	2.359 ug/ml

(f)=RT Delta > 1/2 Window

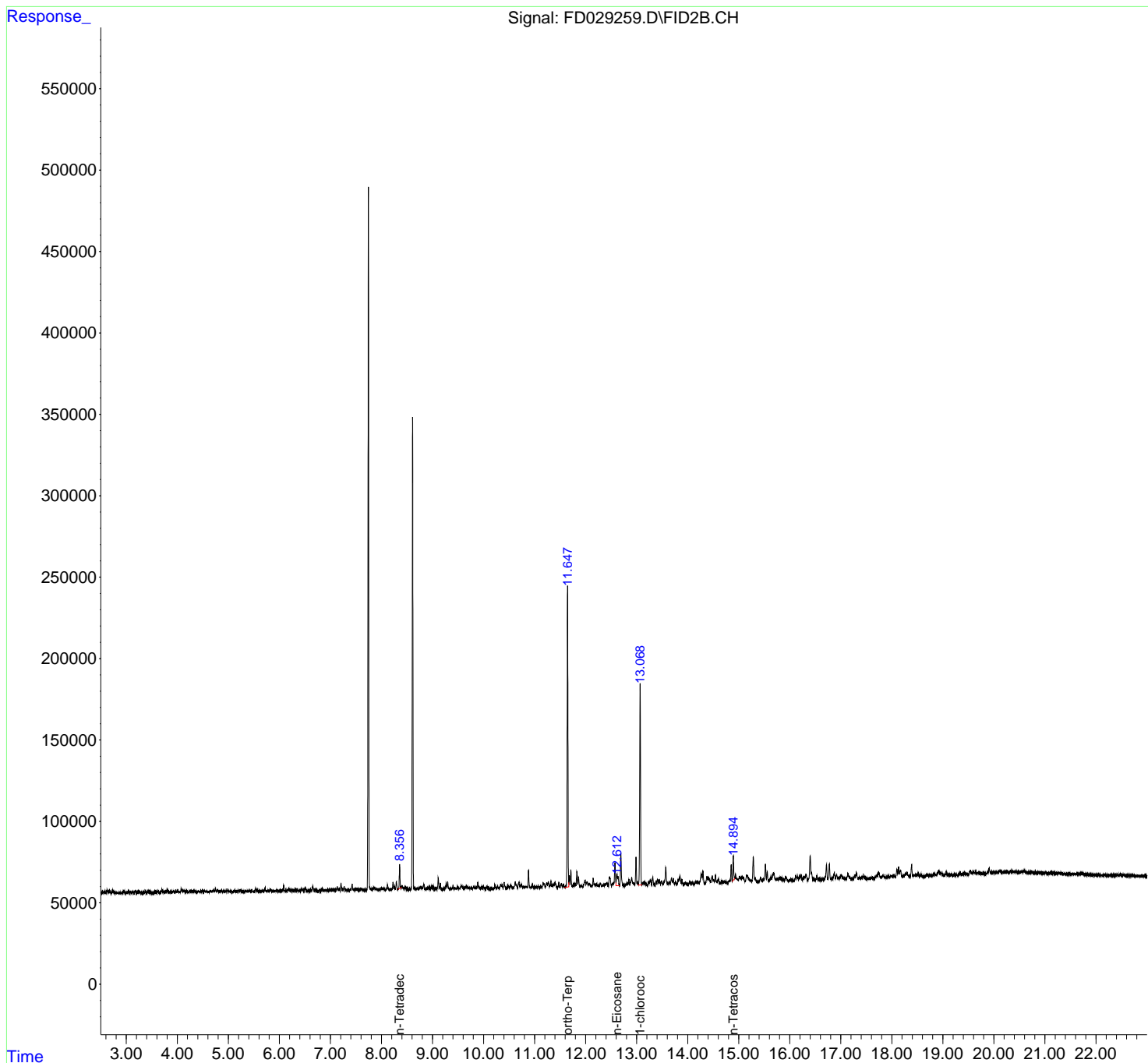
(m)=manual int.

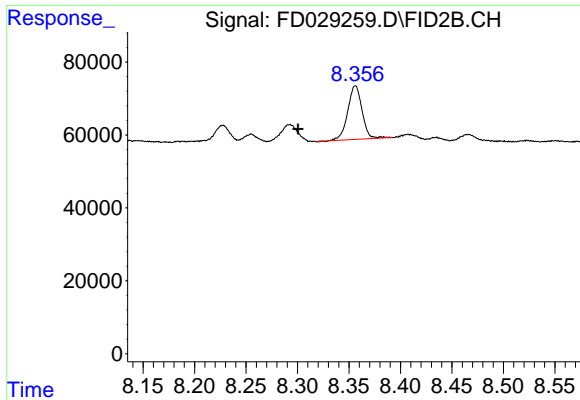
Data Path : Z:\pestpcbsrv\HPCHEM1\FID_D\Data\FD052819AL\
 Data File : FD029259.D
 Signal(s) : FID2B.CH
 Acq On : 28 May 2019 12:08
 Operator : DD\AJ
 Sample : K3041-02
 Misc :
 ALS Vial : 56 Sample Multiplier: 1

Instrument :
 FID_D
 ClientSampleId :

Integration File: autoint1.e
 Quant Time: May 29 04:18:51 2019
 Quant Method : Z:\pestpcbsrv\HPCHEM1\FID_D\methods\Alaphatic EPH 051619.M
 Quant Title : GC Extractables
 QLast Update : Fri May 17 05:38:52 2019
 Response via : Initial Calibration
 Integrator: ChemStation 6890 Scale Mode: Large solvent peaks clipped

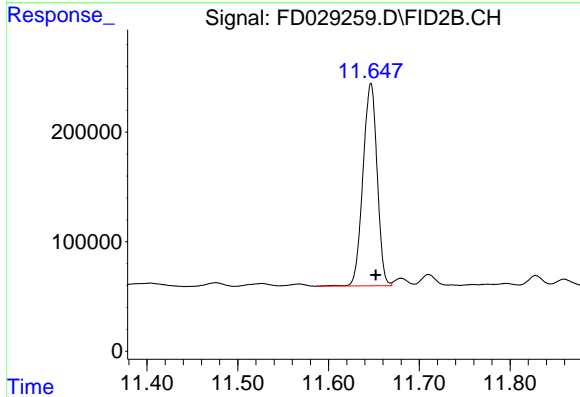
Volume Inj. : 1 ul
 Signal Phase : Rxi-1ms
 Signal Info : 20M x 0.18mm x 0.18um



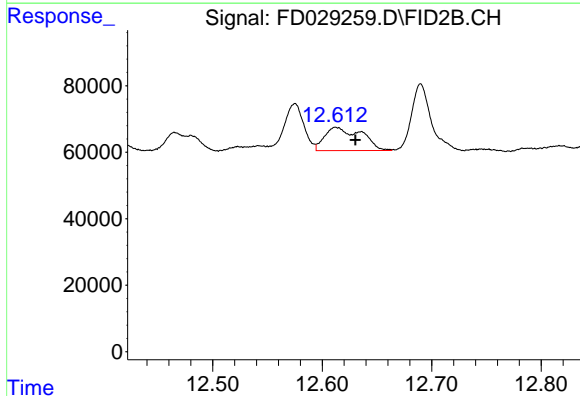


#6 n-Tetradecane (C14)
R.T.: 8.356 min
Delta R.T.: 0.056 min
Response: 142185
Conc: 1.83 ug/ml

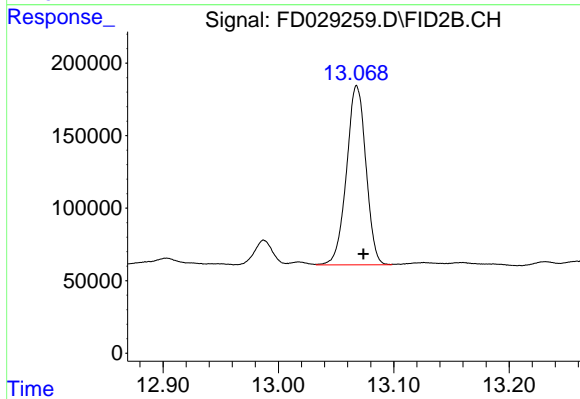
Instrument :
FID_D
ClientSampled :



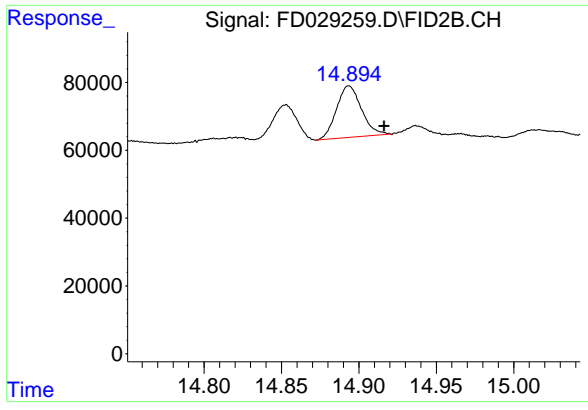
#9 ortho-Terphenyl (SURR)
R.T.: 11.647 min
Delta R.T.: -0.006 min
Response: 2006659
Conc: 22.80 ug/ml



#10 n-Eicosane (C20)
R.T.: 12.613 min
Delta R.T.: -0.018 min
Response: 164026
Conc: 2.27 ug/ml



#12 1-chlorooctadecane (SURR)
R.T.: 13.068 min
Delta R.T.: -0.006 min
Response: 1443774
Conc: 22.57 ug/ml



#14 n-Tetracosane (C24)

R.T.: 14.894 min
Delta R.T.: -0.022 min
Response: 169863
Conc: 2.36 ug/ml

Instrument :
FID_D
ClientSampleId :