

Data Path : Z:\pestpcbsrv\HPCHEM1\FID_D\Data\FD060120AR\
 Data File : FD033624.D
 Signal(s) : FID2B.CH
 Acq On : 01 Jun 2020 9:52
 Operator : DD\AJ
 Sample : 20 PPM AROMATIC HC STD
 Misc :
 ALS Vial : 52 Sample Multiplier: 1

Integration File: autoint1.e
 Quant Time: Jun 02 02:38:18 2020
 Quant Method : Z:\pestpcbsrv\HPCHEM1\FID_D\methods\Aromatic EPH 051920.M
 Quant Title : GC Extractables
 QLast Update : Wed May 20 09:14:43 2020
 Response via : Initial Calibration
 Integrator: ChemStation 6890 Scale Mode: Large solvent peaks clipped

Volume Inj. : 1 µl
 Signal Phase : Rxi-1ms
 Signal Info : 20M x 0.18mm x 0.18µm

Compound	R.T.	Response	Conc Units
System Monitoring Compounds			
4) S 2-Bromonaphthalene (S...	7.576	1905937	18.329 ug/ml
Spiked Amount 50.000		Recovery =	36.66%
6) S 2-Fluorobiphenyl (SURR)	8.439	1287763	18.631 ug/ml
Spiked Amount 50.000 Range 0 - 131		Recovery =	37.26%
11) S ortho-Terphenyl (SURR)	11.466	2302102	17.558 ug/ml
Spiked Amount 50.000		Recovery =	35.12%
Target Compounds			
1) T 1,2,3-Trimethylbenzen...	4.385	2186289	19.177 ug/ml
2) T Naphthalene (C11.7)	5.920	2173277	18.850 ug/ml
3) T 2-Methylnaphthalene (...)	6.968	2192475	18.462 ug/ml
5) T Acenaphthylene (C15.06)	8.239	2205161	17.999 ug/ml
7) T Acenaphthene (C15.5)	8.533	2296821	17.783 ug/ml
8) T Fluorene (C16.55)	9.313	2145078	18.060 ug/ml
9) T Phenanthrene (C19.36)	10.706	2183735	17.803 ug/ml
10) T Anthracene (C19.43)	10.781	2134883	17.538 ug/ml
12) T Fluoranthene (C21.85)	12.515	2194452	17.407 ug/ml
13) T Pyrene (C20.8)	12.811	2132135	17.493 ug/ml
14) T Benzo[a]anthracene (C...	14.683	2017746	17.910 ug/ml
15) T Chrysene (C27.41)	14.724	2167868	16.677 ug/ml
16) T benzo[b]fluoranthene ...	16.235	2029260	17.773 ug/ml
17) T Bnezo[k]fluoranthene ...	16.266	2097800	16.856 ug/ml
18) T Benzo[a]pyrene (C31.34)	16.615	2024695	17.268 ug/ml
19) T Indeno[1,2,3-cd]pyren...	17.985	1905997	18.671 ug/ml
20) T Dibenz[a,h]anthracene...	18.018	2147294	17.792 ug/ml
21) T Benzo[g,h,i]perylene ...	18.236	2041568	18.324 ug/ml

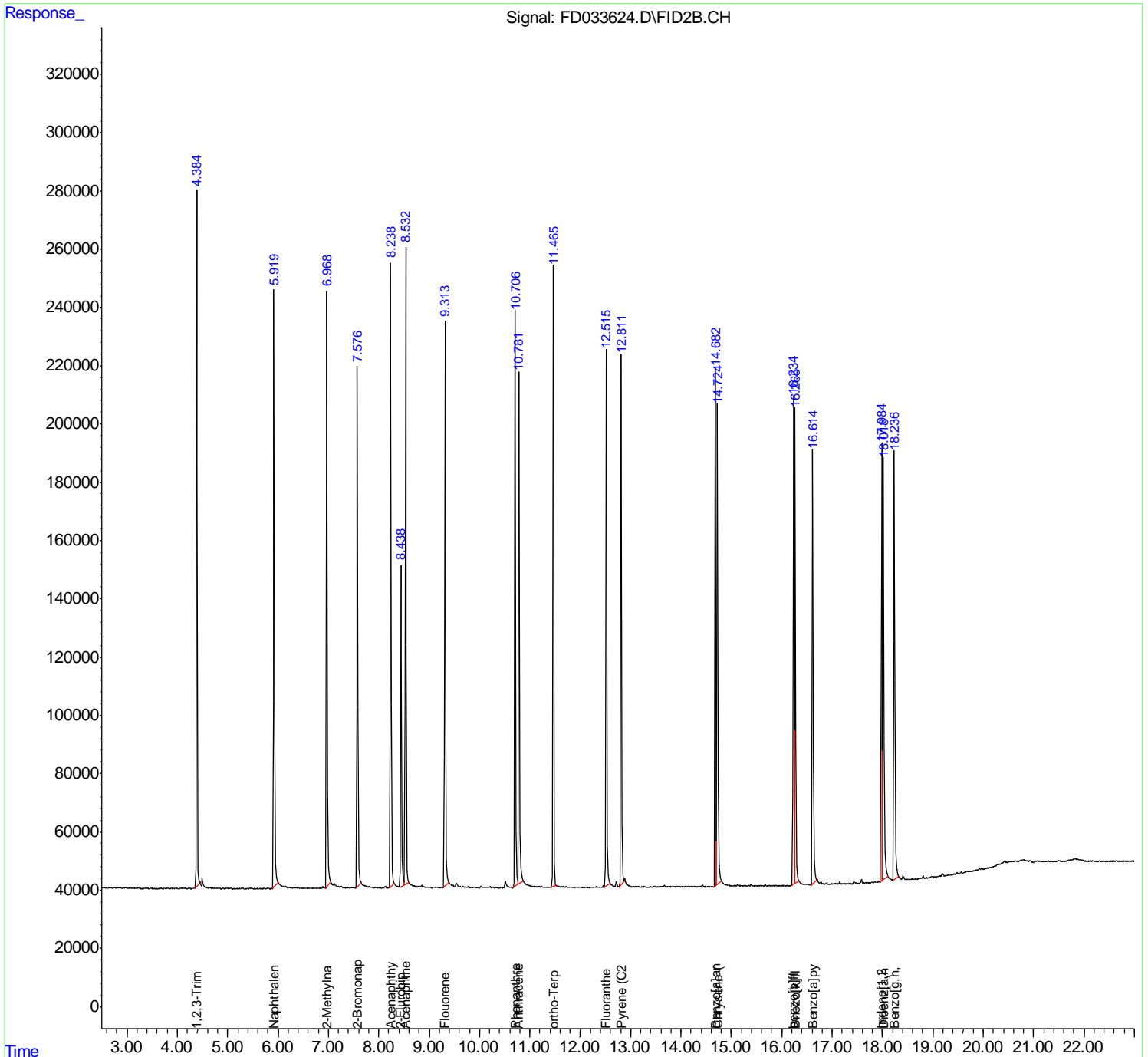
(f)=RT Delta > 1/2 Window

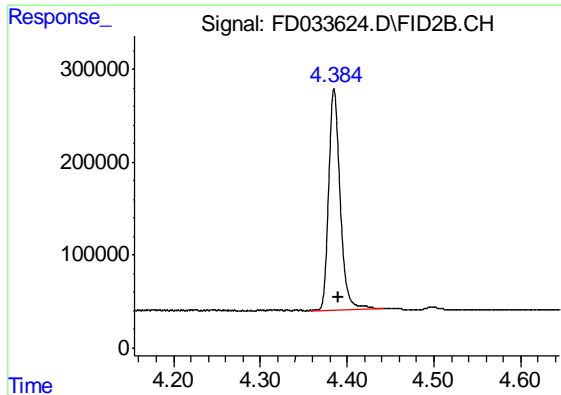
(m)=manual int.

Data Path : Z:\pestpcbsrv\HPCHEM1\FID_D\Data\FD060120AR\
 Data File : FD033624.D
 Signal(s) : FID2B.CH
 Acq On : 01 Jun 2020 9:52
 Operator : DD\AJ
 Sample : 20 PPM AROMATIC HC STD
 Misc :
 ALS Vial : 52 Sample Multiplier: 1

Integration File: autoint1.e
 Quant Time: Jun 02 02:38:18 2020
 Quant Method : Z:\pestpcbsrv\HPCHEM1\FID_D\methods\Aromatic EPH 051920.M
 Quant Title : GC Extractables
 QLast Update : Wed May 20 09:14:43 2020
 Response via : Initial Calibration
 Integrator: ChemStation 6890 Scale Mode: Large solvent peaks clipped

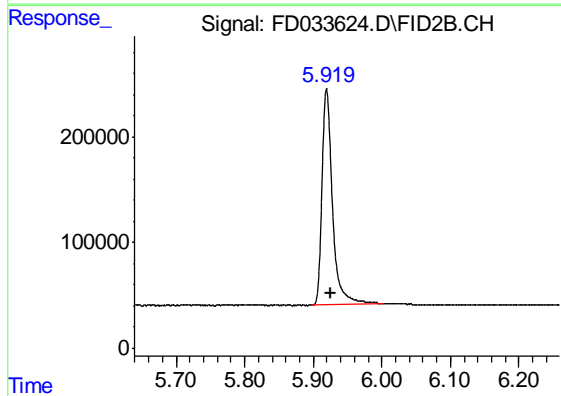
Volume Inj. : 1 µl
 Signal Phase : Rxi-1ms
 Signal Info : 20M x 0.18mm x 0.18µm





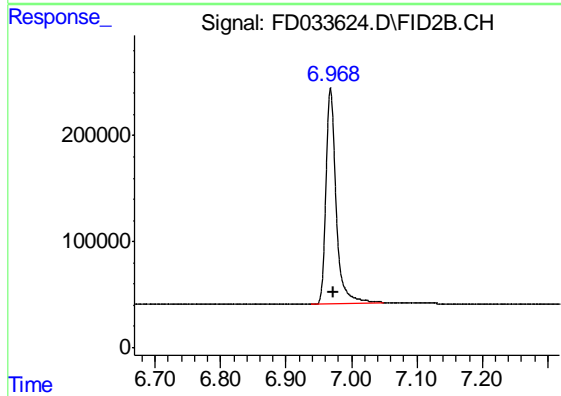
#1 1,2,3-Trimethylbenzene (C10.1)

R.T.: 4.385 min
Delta R.T.: -0.005 min
Response: 2186289
Conc: 19.18 ug/ml



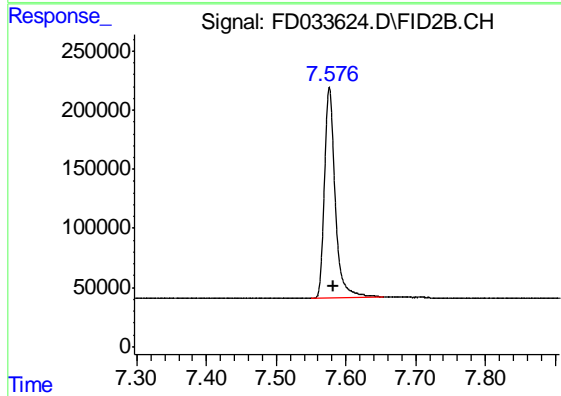
#2 Naphthalene (C11.7)

R.T.: 5.920 min
Delta R.T.: -0.005 min
Response: 2173277
Conc: 18.85 ug/ml



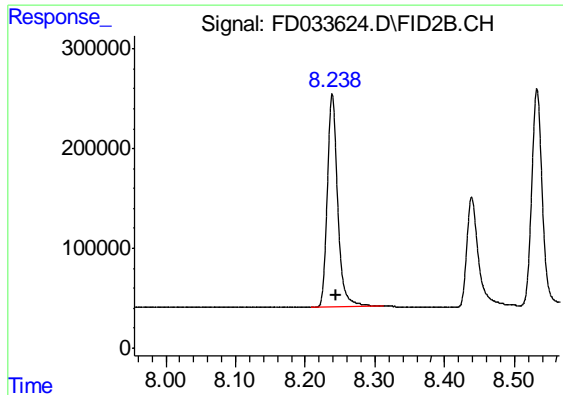
#3 2-Methylnaphthalene (C12.89)

R.T.: 6.968 min
Delta R.T.: -0.005 min
Response: 2192475
Conc: 18.46 ug/ml



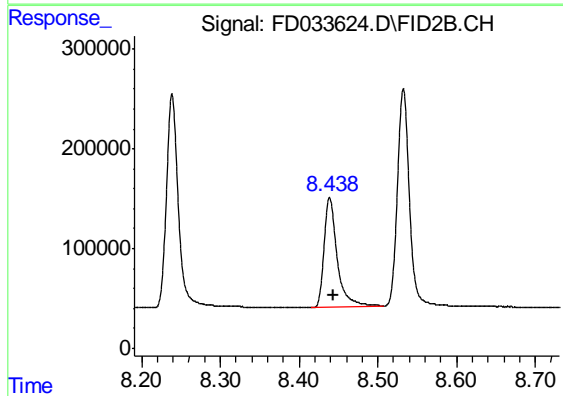
#4 2-Bromonaphthalene (SURR)

R.T.: 7.576 min
Delta R.T.: -0.005 min
Response: 1905937
Conc: 18.33 ug/ml



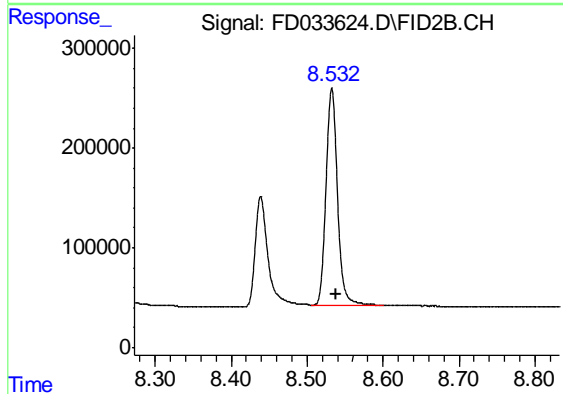
#5 Acenaphthylene (C15.06)

R.T.: 8.239 min
Delta R.T.: -0.005 min
Response: 2205161
Conc: 18.00 ug/ml



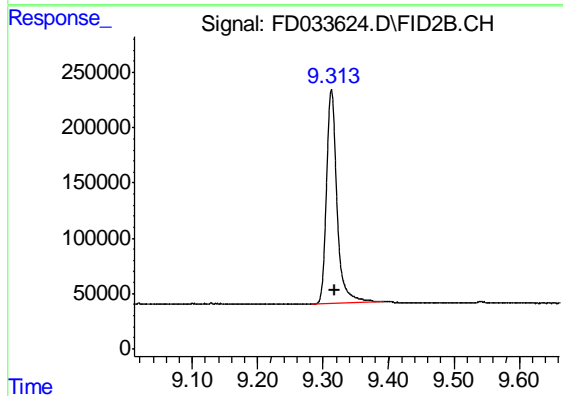
#6 2-Fluorobiphenyl (SURR)

R.T.: 8.439 min
Delta R.T.: -0.005 min
Response: 1287763
Conc: 18.63 ug/ml



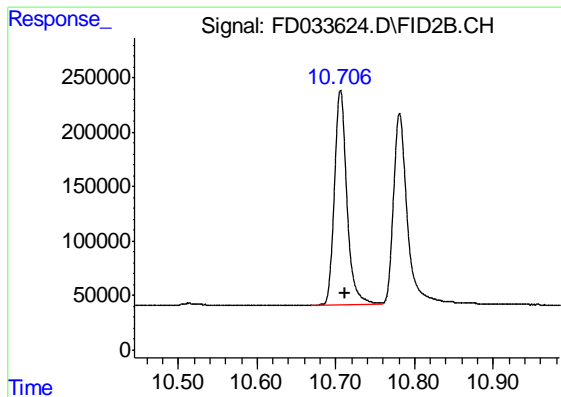
#7 Acenaphthene (C15.5)

R.T.: 8.533 min
Delta R.T.: -0.005 min
Response: 2296821
Conc: 17.78 ug/ml



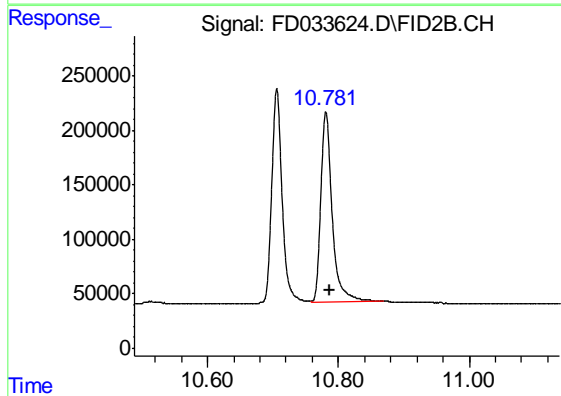
#8 Fluorene (C16.55)

R.T.: 9.313 min
Delta R.T.: -0.005 min
Response: 2145078
Conc: 18.06 ug/ml



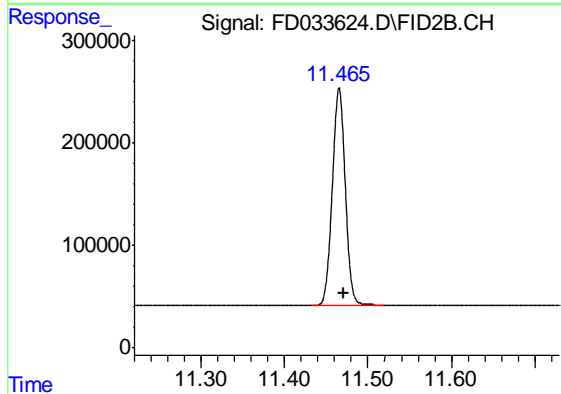
#9 Phenanthrene (C19.36)

R.T.: 10.706 min
Delta R.T.: -0.005 min
Response: 2183735
Conc: 17.80 ug/ml



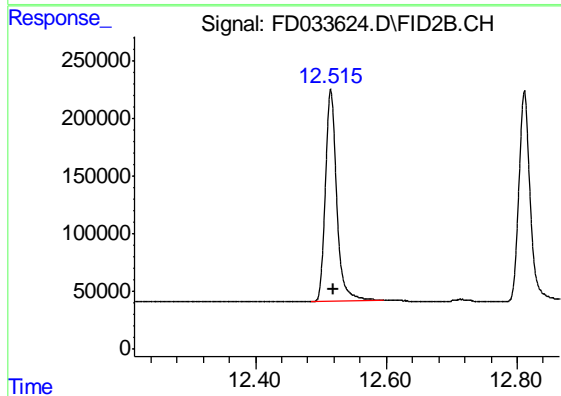
#10 Anthracene (C19.43)

R.T.: 10.781 min
Delta R.T.: -0.006 min
Response: 2134883
Conc: 17.54 ug/ml



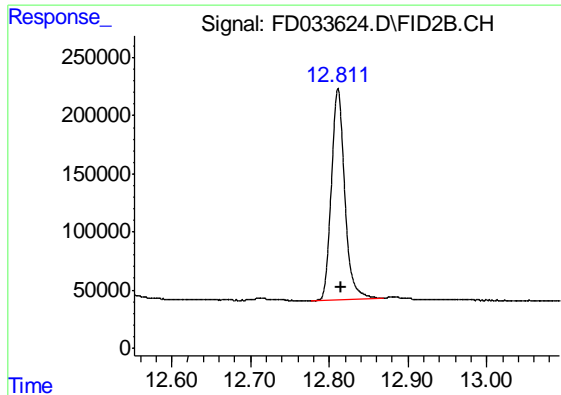
#11 ortho-Terphenyl (SURRE)

R.T.: 11.466 min
Delta R.T.: -0.005 min
Response: 2302102
Conc: 17.56 ug/ml



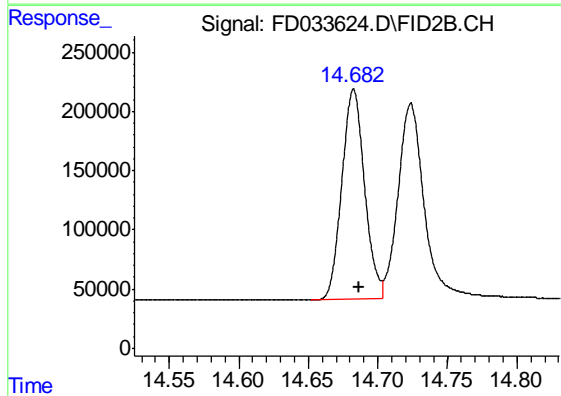
#12 Fluoranthene (C21.85)

R.T.: 12.515 min
Delta R.T.: -0.005 min
Response: 2194452
Conc: 17.41 ug/ml



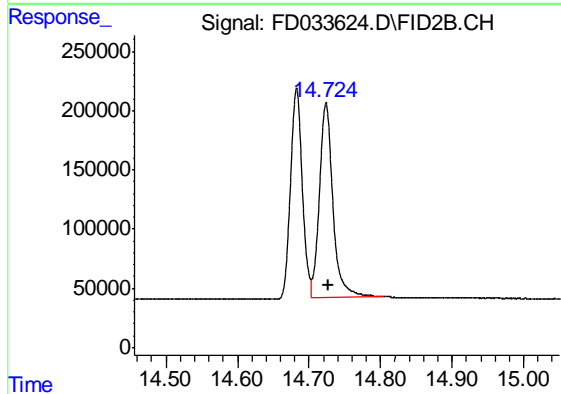
#13 Pyrene (C20.8)

R.T.: 12.811 min
Delta R.T.: -0.004 min
Response: 2132135
Conc: 17.49 ug/ml



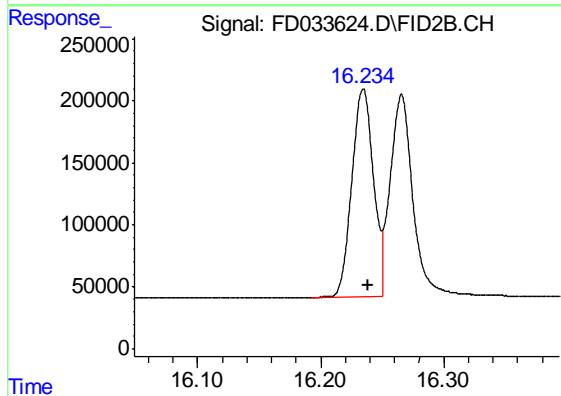
#14 Benzo[a]anthracene (C26.37)

R.T.: 14.683 min
Delta R.T.: -0.004 min
Response: 2017746
Conc: 17.91 ug/ml



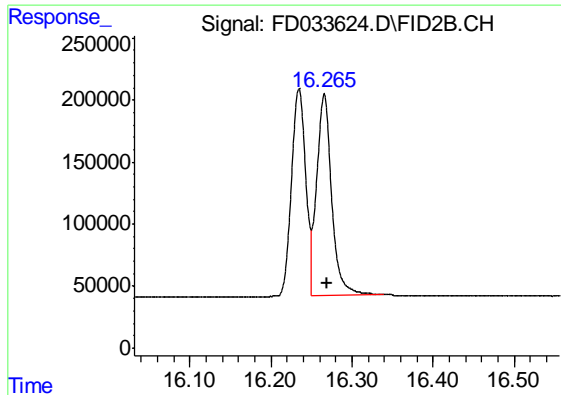
#15 Chrysene (C27.41)

R.T.: 14.724 min
Delta R.T.: -0.004 min
Response: 2167868
Conc: 16.68 ug/ml



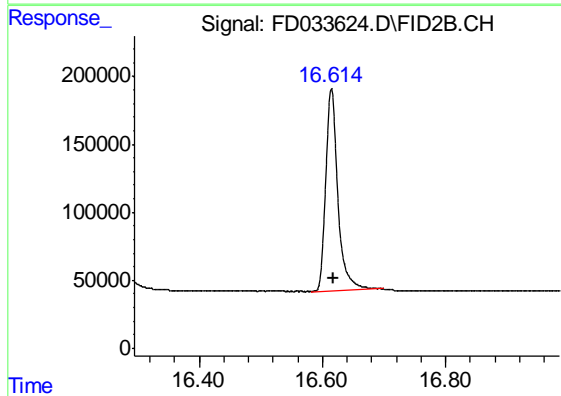
#16 benzo[b]fluoranthene (C30.41)

R.T.: 16.235 min
Delta R.T.: -0.004 min
Response: 2029260
Conc: 17.77 ug/ml



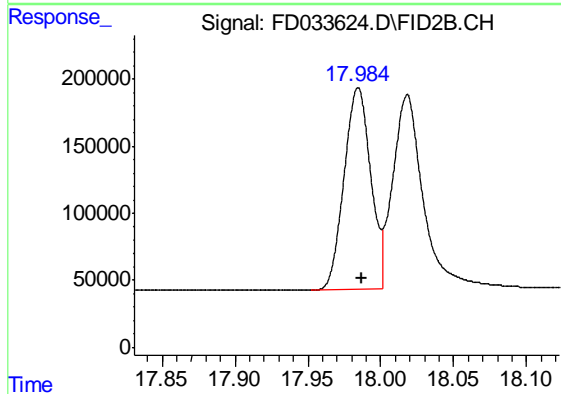
#17 Bnezo[k]fluoranthene (C30.14)

R.T.: 16.266 min
Delta R.T.: -0.003 min
Response: 2097800
Conc: 16.86 ug/ml



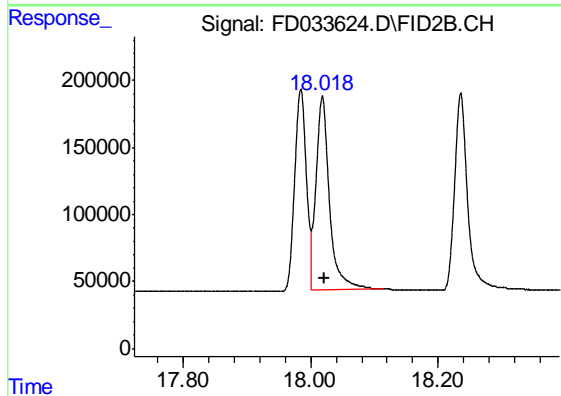
#18 Benzo[a]pyrene (C31.34)

R.T.: 16.615 min
Delta R.T.: -0.003 min
Response: 2024695
Conc: 17.27 ug/ml



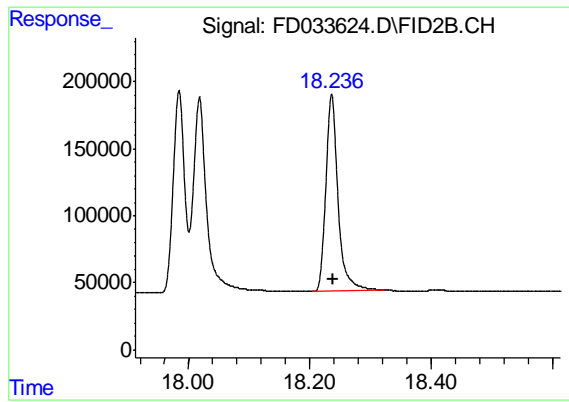
#19 Indeno[1,2,3-cd]pyrene (C35.01)

R.T.: 17.985 min
Delta R.T.: -0.003 min
Response: 1905997
Conc: 18.67 ug/ml



#20 Dibenz[a,h]anthracene (C30.36)

R.T.: 18.018 min
Delta R.T.: -0.004 min
Response: 2147294
Conc: 17.79 ug/ml



#21 Benzo[g,h,i]perylene (C34.01)

R.T.: 18.236 min
Delta R.T.: -0.002 min
Response: 2041568
Conc: 18.32 ug/ml