

Data Path : Z:\pestpcbsrv\HPCHEM1\FID_D\Data\FD060222AL\
Data File : FD042741.D
Signal(s) : FID2B.CH
Acq On : 02 Jun 2022 16:48
Operator : UA/NP
Sample : N3083-19DL 200X
Misc :
ALS Vial : 62 Sample Multiplier: 1

Instrument :
FID_D
ClientSampleId :
D-17-5-B-SB-39(9.5-10)DL

Integration File: sample.E
Quant Time: Jun 02 17:27:47 2022
Quant Method : Z:\pestpcbsrv\HPCHEM1\FID_D\methods\Aliphatic EPH 052722.M
Quant Title : GC Extractables
QLast Update : Sat May 28 07:55:57 2022
Response via : Initial Calibration
Integrator: ChemStation 6890 Scale Mode: Large solvent peaks clipped

Volume Inj. : 1 ul
Signal Phase : Rxi-1ms
Signal Info : 20M x 0.18mm x 0.18um

Compound	R.T.	Response	Conc Units

System Monitoring Compounds			
Target Compounds			

(f)=RT Delta > 1/2 Window

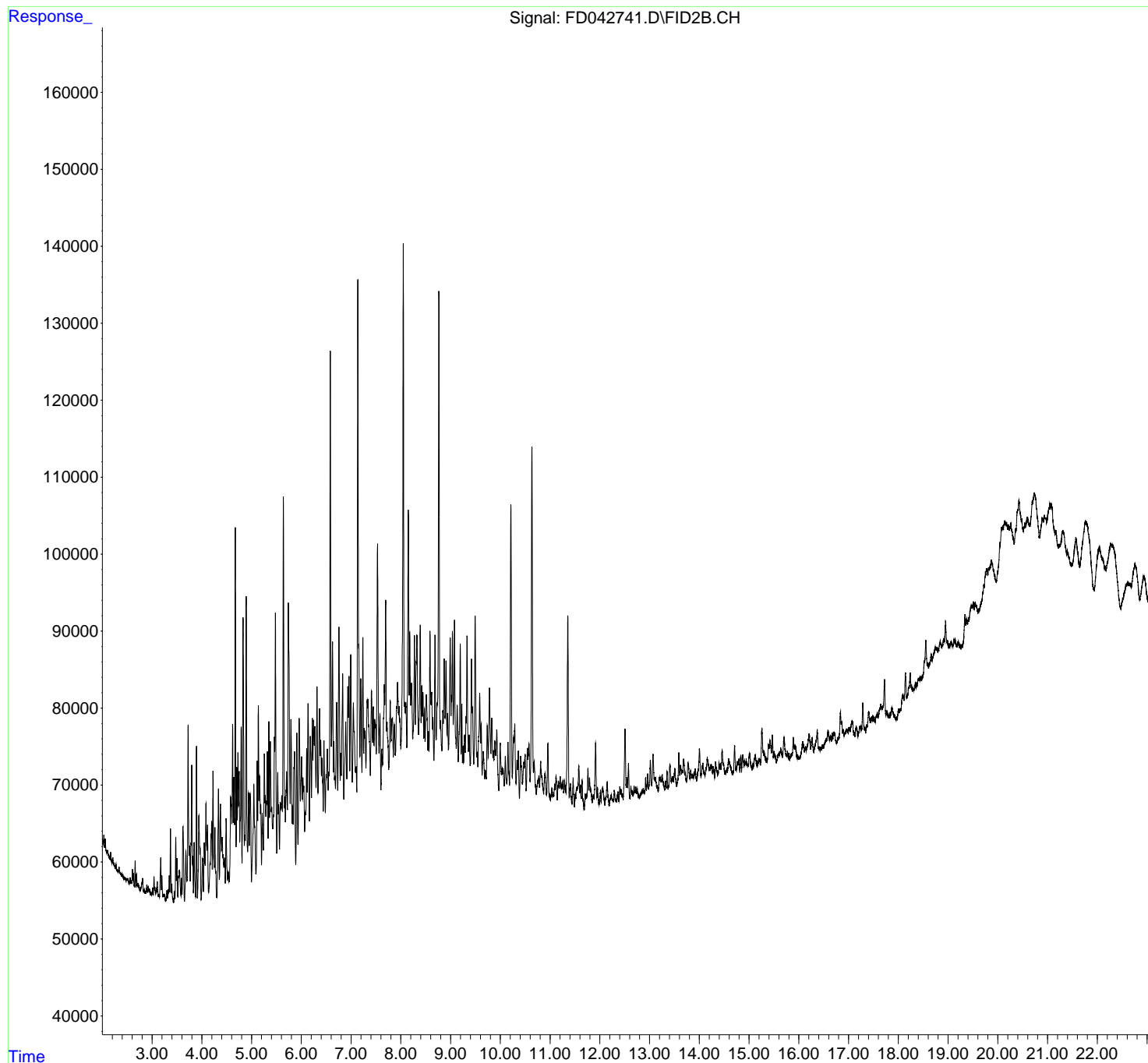
(m)=manual int.

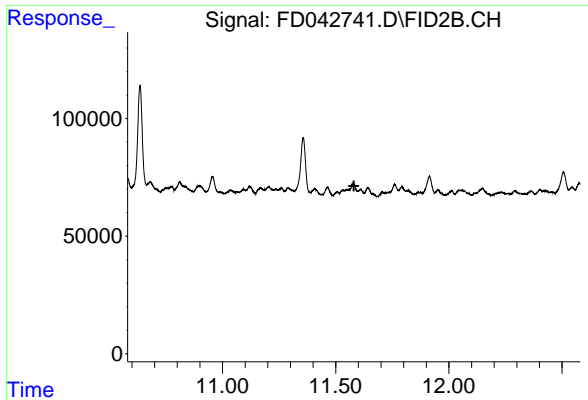
Data Path : Z:\pestpcbsrv\HPCHEM1\FID_D\Data\FD060222AL\
Data File : FD042741.D
Signal(s) : FID2B.CH
Acq On : 02 Jun 2022 16:48
Operator : UA/NP
Sample : N3083-19DL 200X
Misc :
ALS Vial : 62 Sample Multiplier: 1

Instrument :
FID_D
ClientSampleId :
D-17-5-B-SB-39(9.5-10)DL

Integration File: sample.E
Quant Time: Jun 02 17:27:47 2022
Quant Method : Z:\pestpcbsrv\HPCHEM1\FID_D\methods\Aliphatic EPH 052722.M
Quant Title : GC Extractables
QLast Update : Sat May 28 07:55:57 2022
Response via : Initial Calibration
Integrator: ChemStation 6890 Scale Mode: Large solvent peaks clipped

Volume Inj. : 1 ul
Signal Phase : Rxi-1ms
Signal Info : 20M x 0.18mm x 0.18um

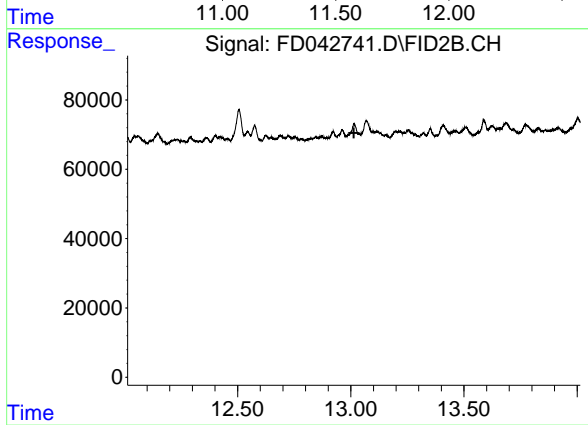




#9 ortho-Terphenyl (SURR)

R.T.: 0.000 min
Exp R.T. : 11.581 min
Response: 0
Conc: N.D.

Instrument :
FID_D
ClientSampleId :
D-17-5-B-SB-39(9.5-10)DL



#12 1-chlorooctadecane (SURR)

R.T.: 0.000 min
Exp R.T. : 13.014 min
Response: 0
Conc: N.D.