

Data Path : Z:\pestpcbsrv\HPCHEM1\FID\_D\Data\FD060519AL\  
 Data File : FD029363.D  
 Signal(s) : FID2B.CH  
 Acq On : 05 Jun 2019 19:17  
 Operator : DD\AJ  
 Sample : K3183-07  
 Misc :  
 ALS Vial : 62 Sample Multiplier: 1

Integration File: sample.E  
 Quant Time: Jun 06 01:45:48 2019  
 Quant Method : Z:\pestpcbsrv\HPCHEM1\FID\_D\methods\Alaphatic EPH 051619.M  
 Quant Title : GC Extractables  
 QLast Update : Fri May 17 05:38:52 2019  
 Response via : Initial Calibration  
 Integrator: ChemStation 6890 Scale Mode: Large solvent peaks clipped

Volume Inj. : 1 ul  
 Signal Phase : Rxi-1ms  
 Signal Info : 20M x 0.18mm x 0.18um

Compound	R.T.	Response	Conc Units
System Monitoring Compounds			
9) S ortho-Terphenyl (SURR)	11.644	2934076	33.342 ug/ml
Spiked Amount	50.000	Recovery =	66.68%
12) S 1-chlorooctadecane (S...	13.065	2108174	32.949 ug/ml
Spiked Amount	50.000	Recovery =	65.90%

Target Compounds

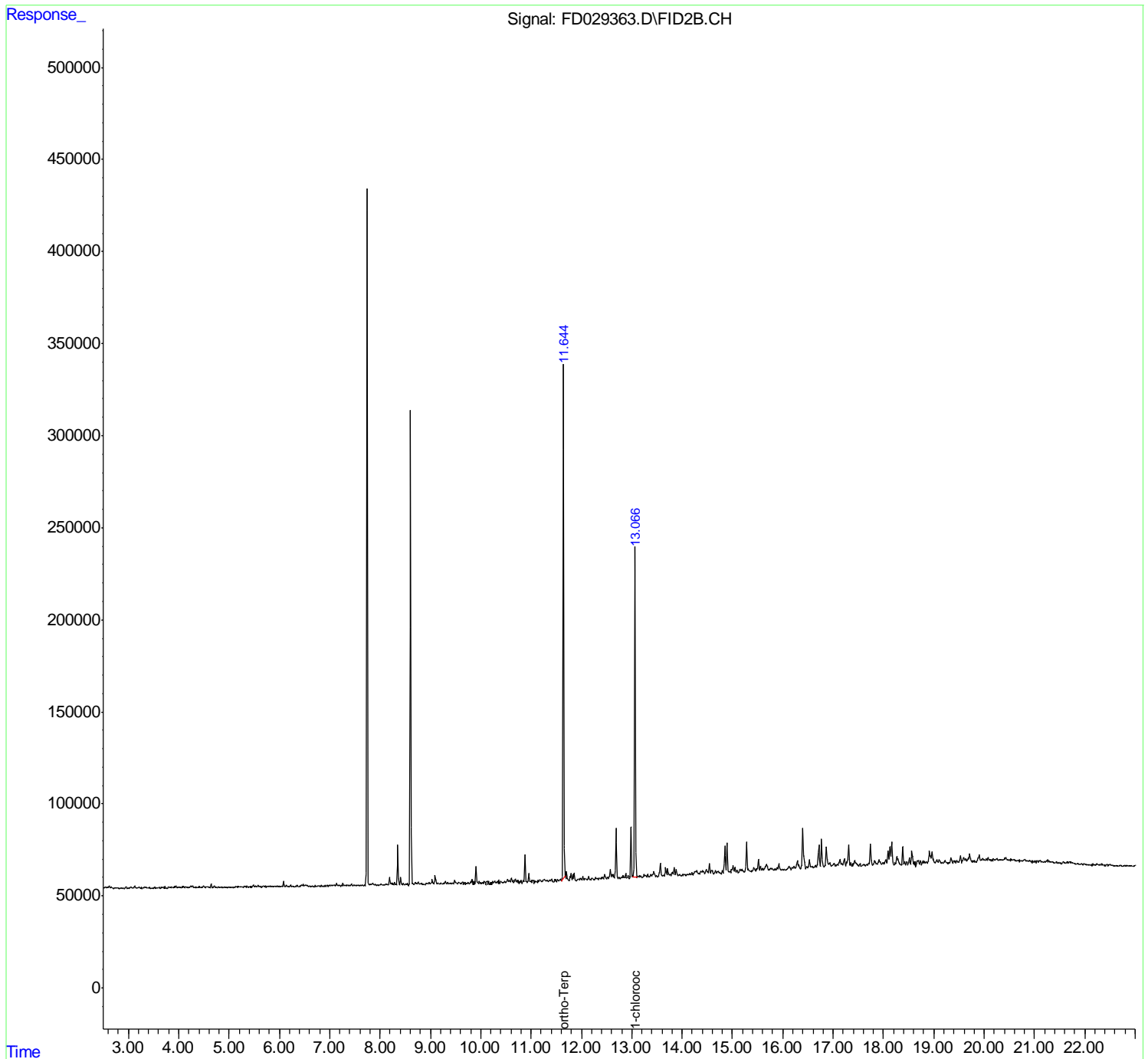
(f)=RT Delta > 1/2 Window

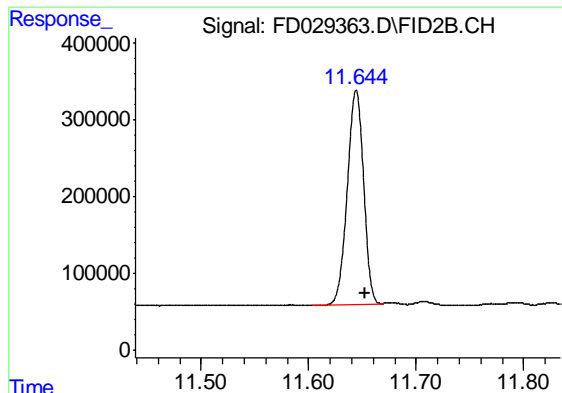
(m)=manual int.

Data Path : Z:\pestpcbsrv\HPCHEM1\FID\_D\Data\FD060519AL\  
Data File : FD029363.D  
Signal(s) : FID2B.CH  
Acq On : 05 Jun 2019 19:17  
Operator : DD\AJ  
Sample : K3183-07  
Misc :  
ALS Vial : 62 Sample Multiplier: 1

Integration File: sample.E  
Quant Time: Jun 06 01:45:48 2019  
Quant Method : Z:\pestpcbsrv\HPCHEM1\FID\_D\methods\Alaphatic EPH 051619.M  
Quant Title : GC Extractables  
QLast Update : Fri May 17 05:38:52 2019  
Response via : Initial Calibration  
Integrator: ChemStation 6890 Scale Mode: Large solvent peaks clipped

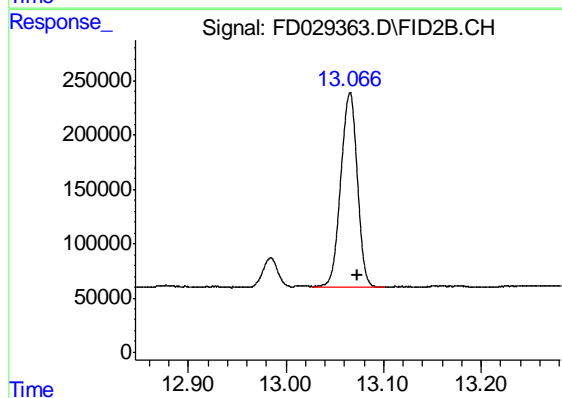
Volume Inj. : 1 ul  
Signal Phase : Rxi-1ms  
Signal Info : 20M x 0.18mm x 0.18um





#9 ortho-Terphenyl (SURR)

R.T.: 11.644 min  
Delta R.T.: -0.008 min  
Response: 2934076  
Conc: 33.34 ug/ml



#12 1-chlorooctadecane (SURR)

R.T.: 13.065 min  
Delta R.T.: -0.008 min  
Response: 2108174  
Conc: 32.95 ug/ml