

Data Path : Z:\pestpcbsrv\HPCHEM1\FID_D\Data\FD060524AR\
 Data File : FD047864.D
 Signal(s) : FID2B.ch
 Acq On : 05 Jun 2024 14:26
 Operator : YP/AJ
 Sample : I.BLK
 Misc :
 ALS Vial : 51 Sample Multiplier: 1

Instrument :
 FID_D
ClientSampleId :
 I.BLK

Integration File: autoint1.e
 Quant Time: Jun 06 03:49:09 2024
 Quant Method : Z:\pestpcbsrv\HPCHEM1\FID_D\methods\Aromatic EPH 052124.M
 Quant Title : GC Extractables
 QLast Update : Tue May 21 19:00:48 2024
 Response via : Initial Calibration
 Integrator: ChemStation

Volume Inj. : 1 µl
 Signal Phase : Rxi-1ms
 Signal Info : 20M x 0.18mm x 0.18µm

Compound	R.T.	Response	Conc Units

System Monitoring Compounds			
Target Compounds			

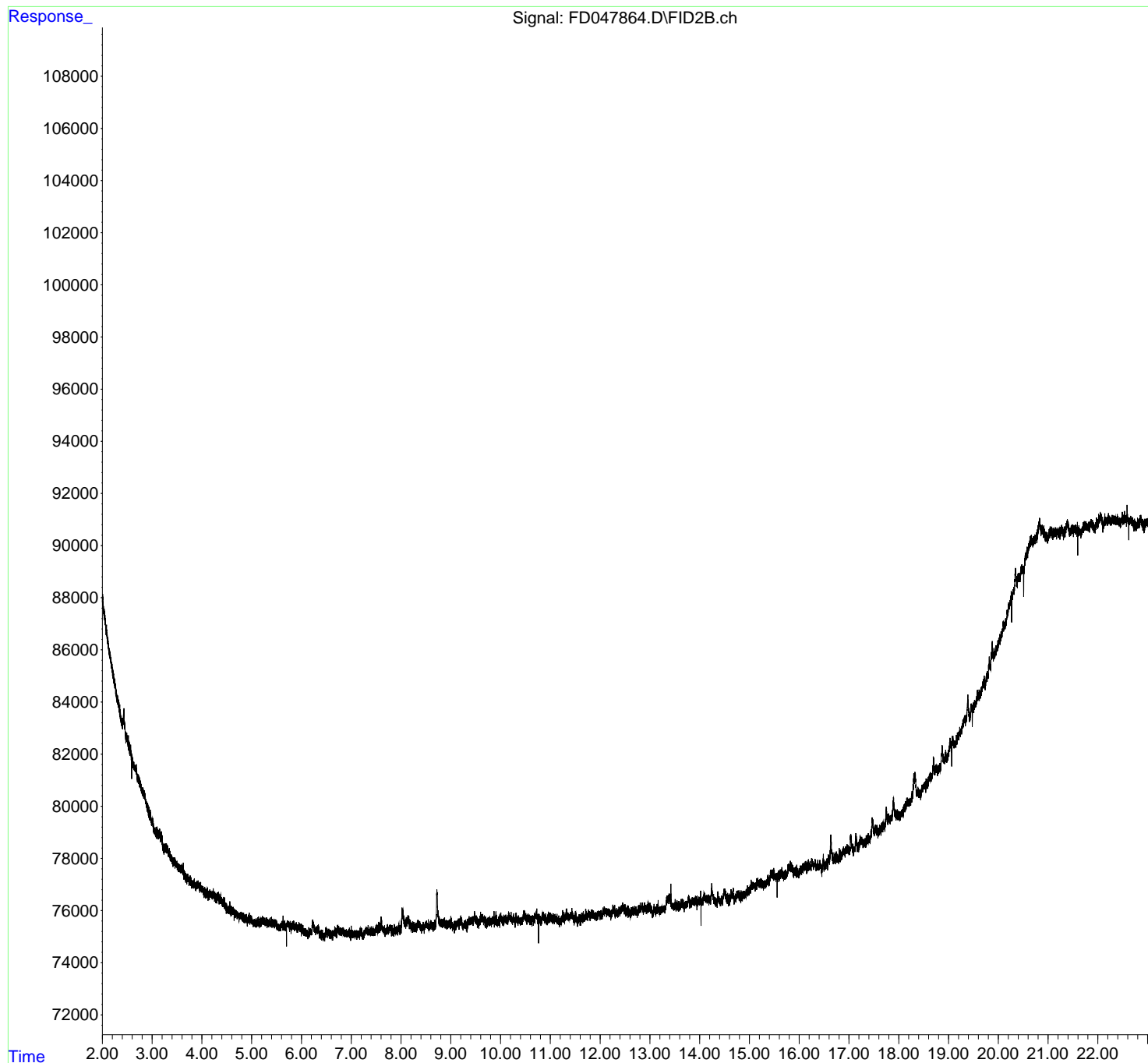
(f)=RT Delta > 1/2 Window (m)=manual int.

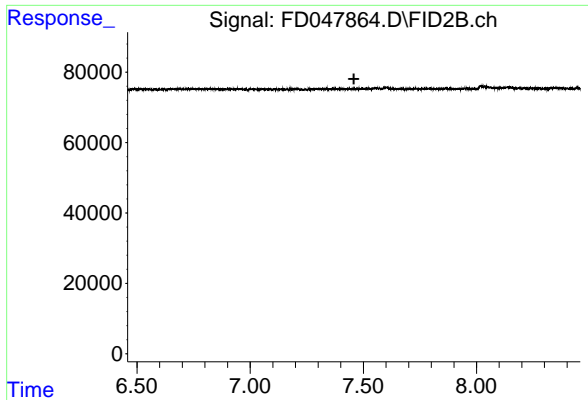
Data Path : Z:\pestpcbsrv\HPCHEM1\FID_D\Data\FD060524AR\
Data File : FD047864.D
Signal(s) : FID2B.ch
Acq On : 05 Jun 2024 14:26
Operator : YP/AJ
Sample : I.BLK
Misc :
ALS Vial : 51 Sample Multiplier: 1

Instrument :
FID_D
ClientSampleId :
I.BLK

Integration File: autoint1.e
Quant Time: Jun 06 03:49:09 2024
Quant Method : Z:\pestpcbsrv\HPCHEM1\FID_D\methods\Aromatic EPH 052124.M
Quant Title : GC Extractables
QLast Update : Tue May 21 19:00:48 2024
Response via : Initial Calibration
Integrator: ChemStation

Volume Inj. : 1 μ l
Signal Phase : Rxi-1ms
Signal Info : 20M x 0.18mm x 0.18 μ m

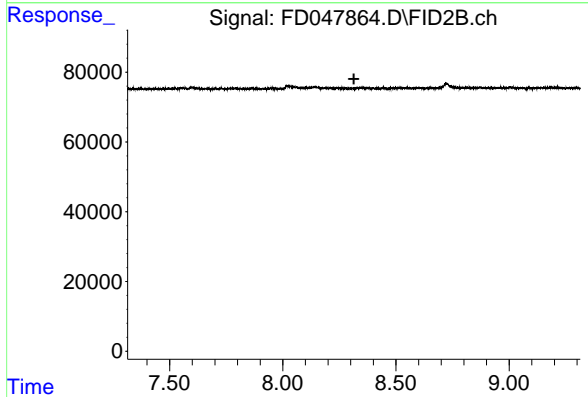




#4 2-Bromonaphthalene (SURRE)

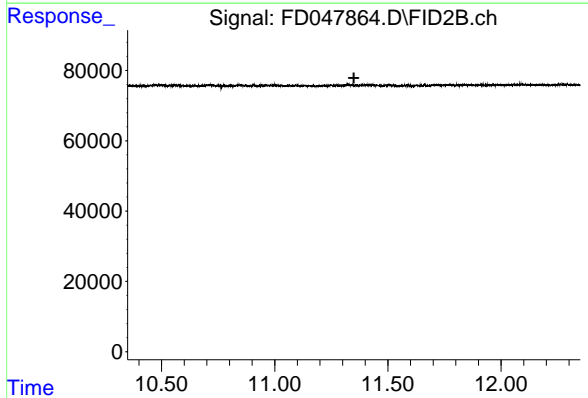
R.T.: 0.000 min
 Exp R.T. : 7.458 min
 Response: 0
 Conc: N.D.

Instrument :
 FID_D
 ClientSampleId :
 I.BLK



#6 2-Fluorobiphenyl (SURRE)

R.T.: 0.000 min
 Exp R.T. : 8.314 min
 Response: 0
 Conc: N.D.



#11 ortho-Terphenyl (SURRE)

R.T.: 0.000 min
 Exp R.T. : 11.350 min
 Response: 0
 Conc: N.D.