

Data Path : Z:\pestpcbsrv\HPCHEM1\FID_D\Data\FD060621AL\
 Data File : FD037746.D
 Signal(s) : FID2B.CH
 Acq On : 06 Jun 2021 16:40
 Operator : DD\AJ
 Sample : M2589-14DL 5X
 Misc :
 ALS Vial : 63 Sample Multiplier: 1

Instrument :
 FID_D
 ClientSampleId :

Integration File: autoint1.e
 Quant Time: Jun 07 06:22:28 2021
 Quant Method : Z:\pestpcbsrv\HPCHEM1\FID_D\methods\Alaphatic EPH 051321.M
 Quant Title : GC Extractables
 QLast Update : Fri May 14 02:07:09 2021
 Response via : Initial Calibration
 Integrator: ChemStation 6890 Scale Mode: Large solvent peaks clipped

Volume Inj. : 1 ul
 Signal Phase : Rxi-1ms
 Signal Info : 20M x 0.18mm x 0.18um

Compound	R.T.	Response	Conc Units

System Monitoring Compounds			
9) S ortho-Terphenyl (SURR)	11.457	693955	5.918 ug/ml
Spiked Amount	50.000	Recovery =	11.84%
12) S 1-chlorooctadecane (S...	12.893	582648	6.412 ug/ml
Spiked Amount	50.000	Recovery =	12.82%
Target Compounds			
6) T n-Tetradecane (C14)	8.115	163597	1.570 ug/ml
7) T n-Hexadecane (C16)	9.710	190876	1.850 ug/ml
8) T n-Octadecane (C18)	11.146	114491	1.060 ug/ml
10) T n-Eicosane (C20)	12.452	96072	0.882 ug/ml
14) T n-Tetracosane (C24)	14.715	57472	0.530 ug/ml
18) T n-Dotriacontane (C32)	18.423	139707	1.341 ug/ml
19) T n-Tetratriacontane (C34)	19.190	81265	0.800 ug/ml
20) T n-Hexatriacontane (C36)	19.946	14991	0.154 ug/ml
21) T n-Octatriacontane (C38)	20.634	252138	2.743 ug/ml

(f)=RT Delta > 1/2 Window

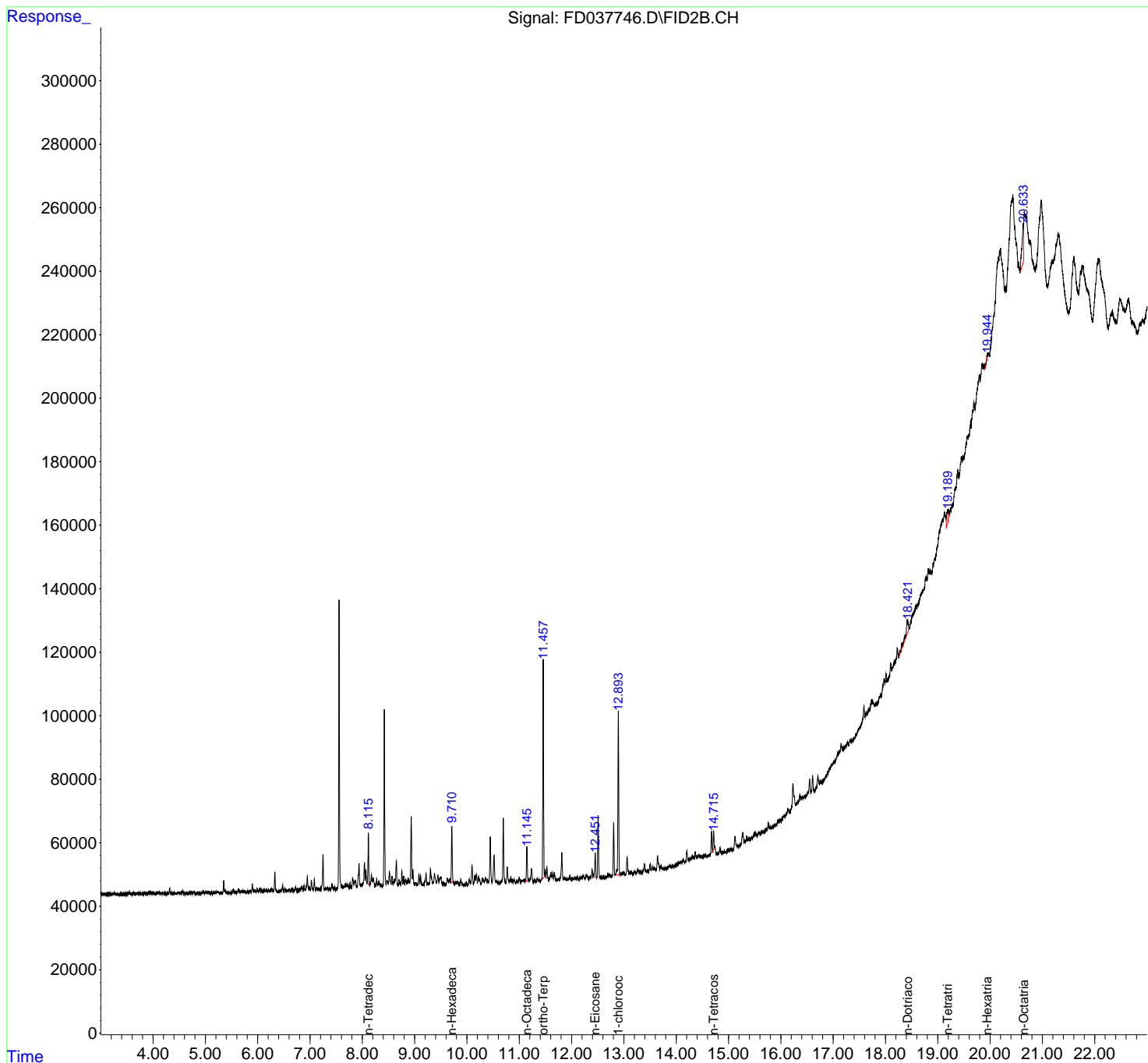
(m)=manual int.

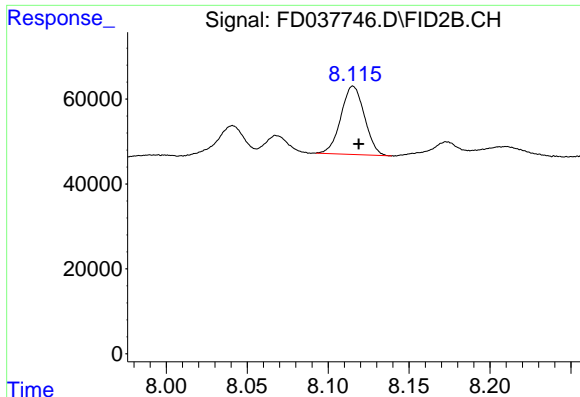
Data Path : Z:\pestpcbsrv\HPCHEM1\FID_D\Data\FD060621AL\
 Data File : FD037746.D
 Signal(s) : FID2B.CH
 Acq On : 06 Jun 2021 16:40
 Operator : DD\AJ
 Sample : M2589-14DL 5X
 Misc :
 ALS Vial : 63 Sample Multiplier: 1

Instrument :
 FID_D
 ClientSampled :

Integration File: autoint1.e
 Quant Time: Jun 07 06:22:28 2021
 Quant Method : Z:\pestpcbsrv\HPCHEM1\FID_D\methods\Alaphatic EPH 051321.M
 Quant Title : GC Extractables
 QLast Update : Fri May 14 02:07:09 2021
 Response via : Initial Calibration
 Integrator: ChemStation 6890 Scale Mode: Large solvent peaks clipped

Volume Inj. : 1 ul
 Signal Phase : Rxi-1ms
 Signal Info : 20M x 0.18mm x 0.18um

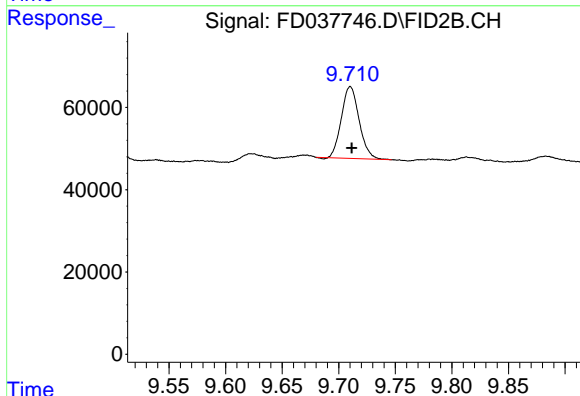




#6 n-Tetradecane (C14)

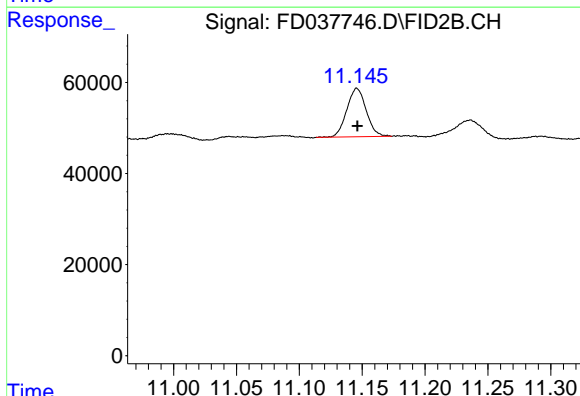
R.T.: 8.115 min
Delta R.T.: -0.004 min
Response: 163597
Conc: 1.57 ug/ml

Instrument :
FID_D
ClientSampleId :



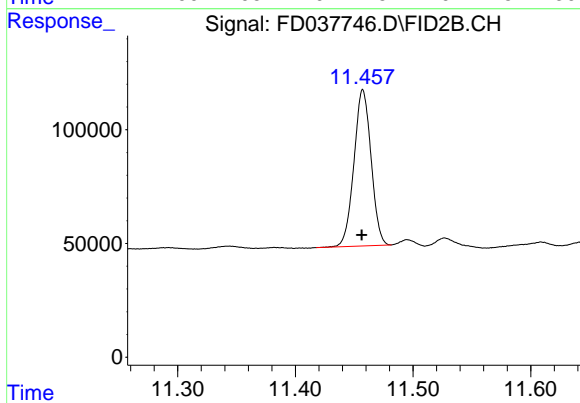
#7 n-Hexadecane (C16)

R.T.: 9.710 min
Delta R.T.: -0.001 min
Response: 190876
Conc: 1.85 ug/ml



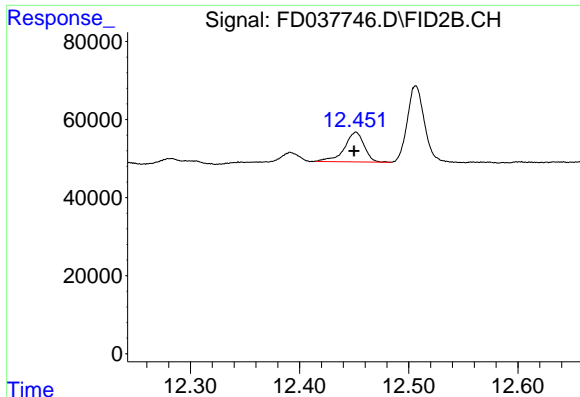
#8 n-Octadecane (C18)

R.T.: 11.146 min
Delta R.T.: 0.000 min
Response: 114491
Conc: 1.06 ug/ml



#9 ortho-Terphenyl (SURR)

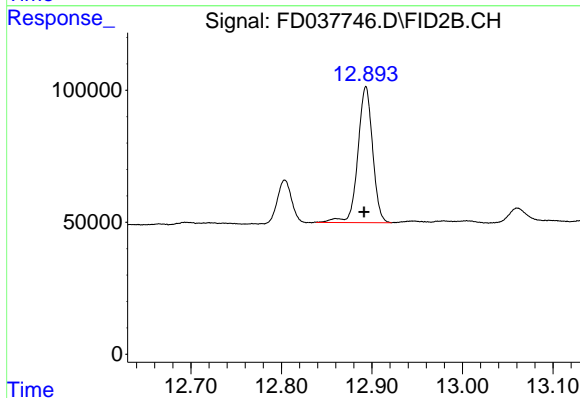
R.T.: 11.457 min
Delta R.T.: 0.000 min
Response: 693955
Conc: 5.92 ug/ml



#10 n-Eicosane (C20)

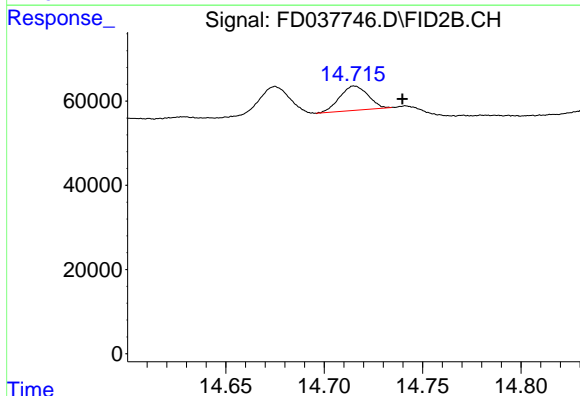
R.T.: 12.452 min
Delta R.T.: 0.002 min
Response: 96072
Conc: 0.88 ug/ml

Instrument :
FID_D
ClientSampleId :



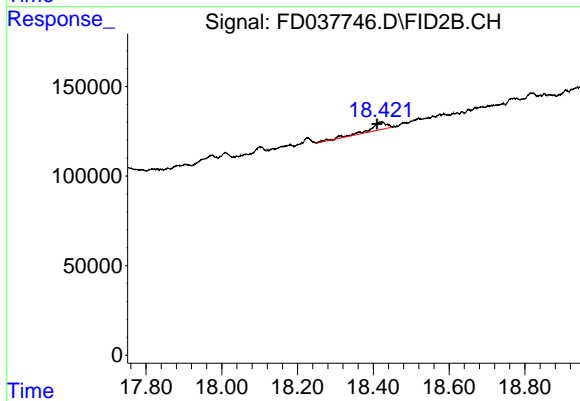
#12 1-chlorooctadecane (SURR)

R.T.: 12.893 min
Delta R.T.: 0.002 min
Response: 582648
Conc: 6.41 ug/ml



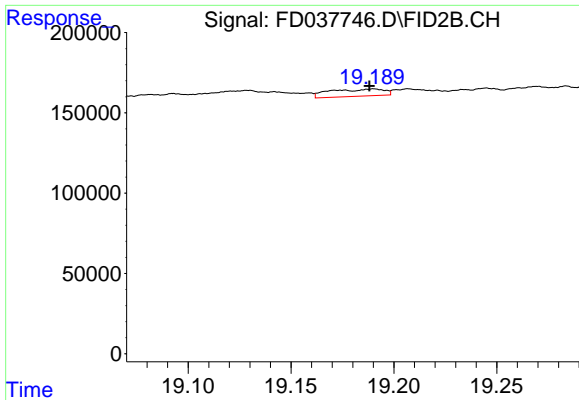
#14 n-Tetracosane (C24)

R.T.: 14.715 min
Delta R.T.: -0.024 min
Response: 57472
Conc: 0.53 ug/ml



#18 n-Dotriacontane (C32)

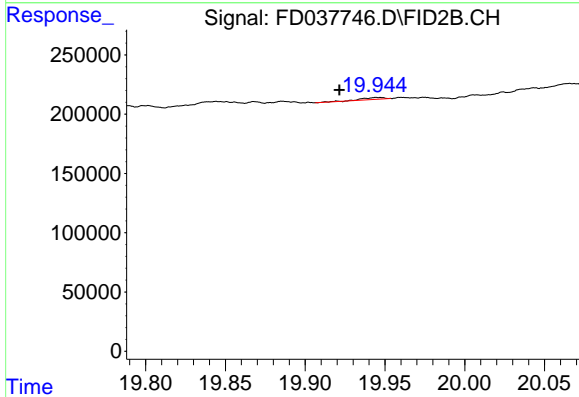
R.T.: 18.423 min
Delta R.T.: 0.013 min
Response: 139707
Conc: 1.34 ug/ml



#19 n-Tetratriacontane (C34)

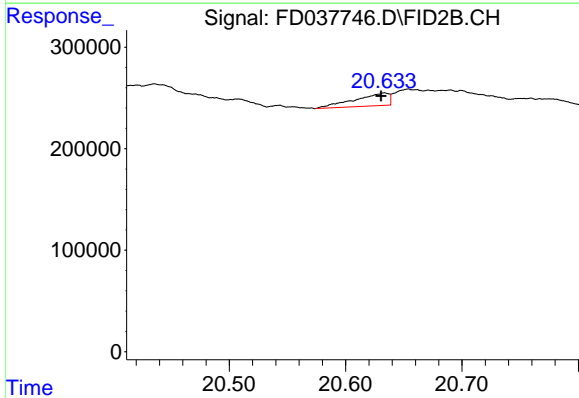
R.T.: 19.190 min
 Delta R.T.: 0.002 min
 Response: 81265
 Conc: 0.80 ug/ml

Instrument :
 FID_D
 ClientSampleId :



#20 n-Hexatriacontane (C36)

R.T.: 19.946 min
 Delta R.T.: 0.024 min
 Response: 14991
 Conc: 0.15 ug/ml



#21 n-Octatriacontane (C38)

R.T.: 20.634 min
 Delta R.T.: 0.003 min
 Response: 252138
 Conc: 2.74 ug/ml