

Data Path : Z:\pestpcbsrv\HPCHEM1\FID\_D\Data\FD060621AL\  
Data File : FD037734.D  
Signal(s) : FID2B.CH  
Acq On : 06 Jun 2021 8:04  
Operator : DD\AJ  
Sample : I.BLK  
Misc :  
ALS Vial : 51 Sample Multiplier: 1

Instrument :  
FID\_D  
ClientSampleId :  
I.BLK

Integration File: autoint1.e  
Quant Time: Jun 07 06:19:49 2021  
Quant Method : Z:\pestpcbsrv\HPCHEM1\FID\_D\methods\Alaphatic EPH 051321.M  
Quant Title : GC Extractables  
QLast Update : Fri May 14 02:07:09 2021  
Response via : Initial Calibration  
Integrator: ChemStation 6890 Scale Mode: Large solvent peaks clipped

Volume Inj. : 1 ul  
Signal Phase : Rxi-1ms  
Signal Info : 20M x 0.18mm x 0.18um

| Compound                    | R.T. | Response | Conc Units |
|-----------------------------|------|----------|------------|
| -----                       |      |          |            |
| System Monitoring Compounds |      |          |            |
| Target Compounds            |      |          |            |
| -----                       |      |          |            |

(f)=RT Delta > 1/2 Window

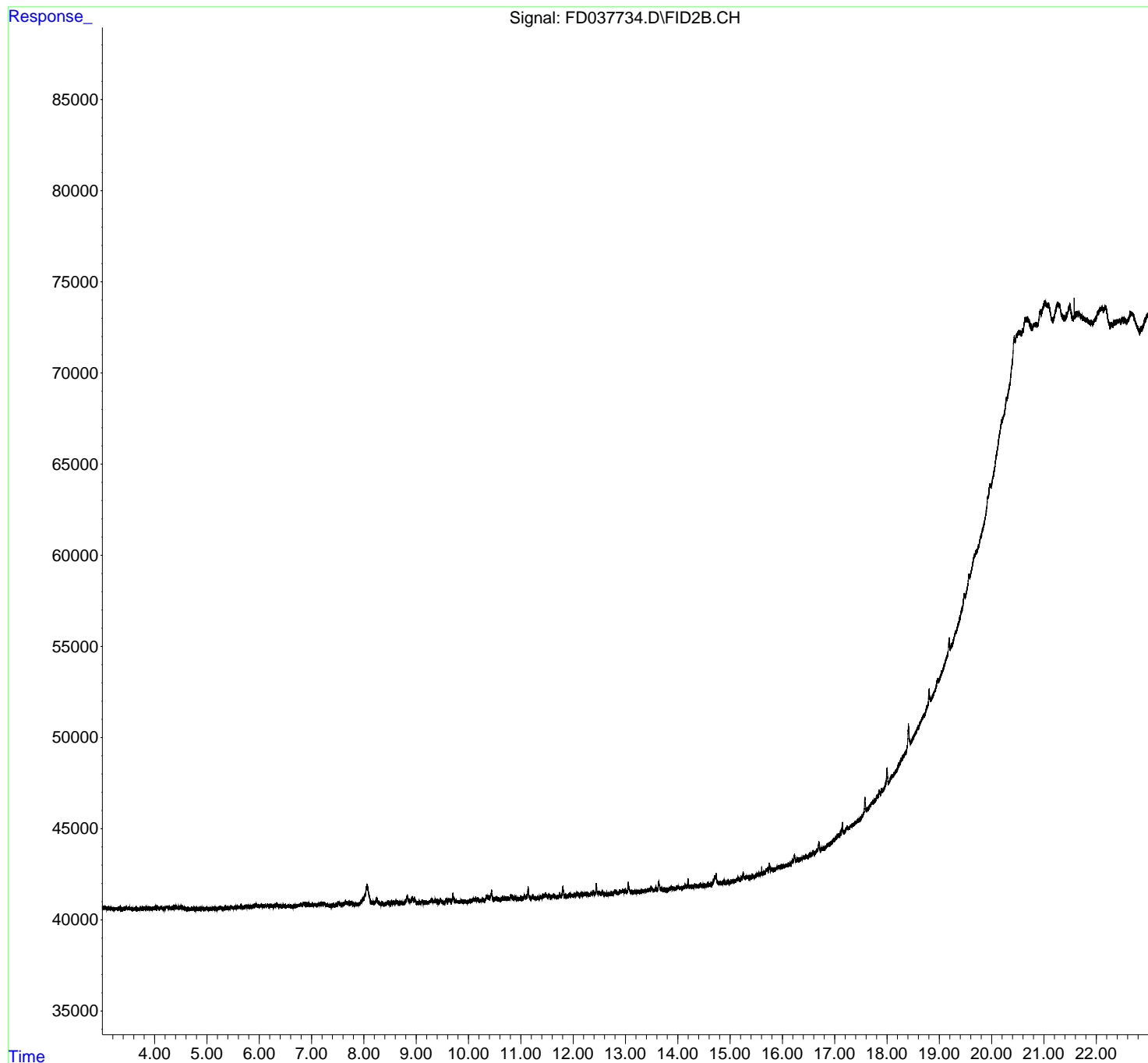
(m)=manual int.

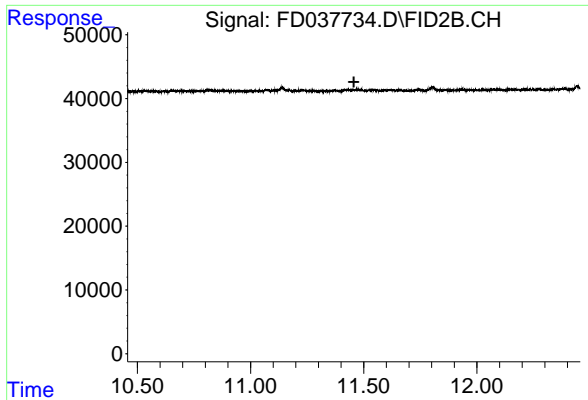
Data Path : Z:\pestpcbsrv\HPCHEM1\FID\_D\Data\FD060621AL\  
Data File : FD037734.D  
Signal(s) : FID2B.CH  
Acq On : 06 Jun 2021 8:04  
Operator : DD\AJ  
Sample : I.BLK  
Misc :  
ALS Vial : 51 Sample Multiplier: 1

Instrument :  
FID\_D  
ClientSampleId :  
I.BLK

Integration File: autoint1.e  
Quant Time: Jun 07 06:19:49 2021  
Quant Method : Z:\pestpcbsrv\HPCHEM1\FID\_D\methods\Alaphatic EPH 051321.M  
Quant Title : GC Extractables  
QLast Update : Fri May 14 02:07:09 2021  
Response via : Initial Calibration  
Integrator: ChemStation 6890 Scale Mode: Large solvent peaks clipped

Volume Inj. : 1 ul  
Signal Phase : Rxi-1ms  
Signal Info : 20M x 0.18mm x 0.18um

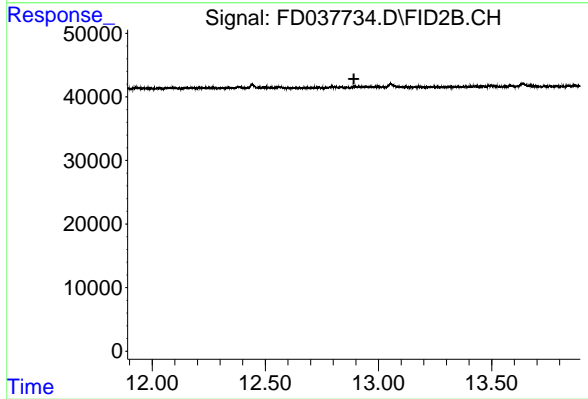




#9 ortho-Terphenyl (SURR)

R.T.: 0.000 min  
Exp R.T. : 11.456 min  
Response: 0  
Conc: N.D.

Instrument :  
FID\_D  
ClientSampleId :  
I.BLK



#12 1-chlorooctadecane (SURR)

R.T.: 0.000 min  
Exp R.T. : 12.891 min  
Response: 0  
Conc: N.D.