

Data Path : Z:\pestpcbsrv\HPCHEM1\FID_D\Data\FD060621AL\
 Data File : FD037747.D
 Signal(s) : FID2B.CH
 Acq On : 06 Jun 2021 17:20
 Operator : DD\AJ
 Sample : M2589-15DL 5X
 Misc :
 ALS Vial : 64 Sample Multiplier: 1

Instrument :
 FID_D
 ClientSampleId :
 18-B11(2-4)DL

Integration File: autoint1.e
 Quant Time: Jun 07 06:22:41 2021
 Quant Method : Z:\pestpcbsrv\HPCHEM1\FID_D\methods\Alaphatic EPH 051321.M
 Quant Title : GC Extractables
 QLast Update : Fri May 14 02:07:09 2021
 Response via : Initial Calibration
 Integrator: ChemStation 6890 Scale Mode: Large solvent peaks clipped

Volume Inj. : 1 ul
 Signal Phase : Rxi-1ms
 Signal Info : 20M x 0.18mm x 0.18um

Compound	R.T.	Response	Conc Units

System Monitoring Compounds			
9) S ortho-Terphenyl (SURR)	11.458	631872	5.388 ug/ml
Spiked Amount	50.000	Recovery	= 10.78%
12) S 1-chlorooctadecane (S...	12.893	551077	6.065 ug/ml
Spiked Amount	50.000	Recovery	= 12.13%

Target Compounds

(f)=RT Delta > 1/2 Window

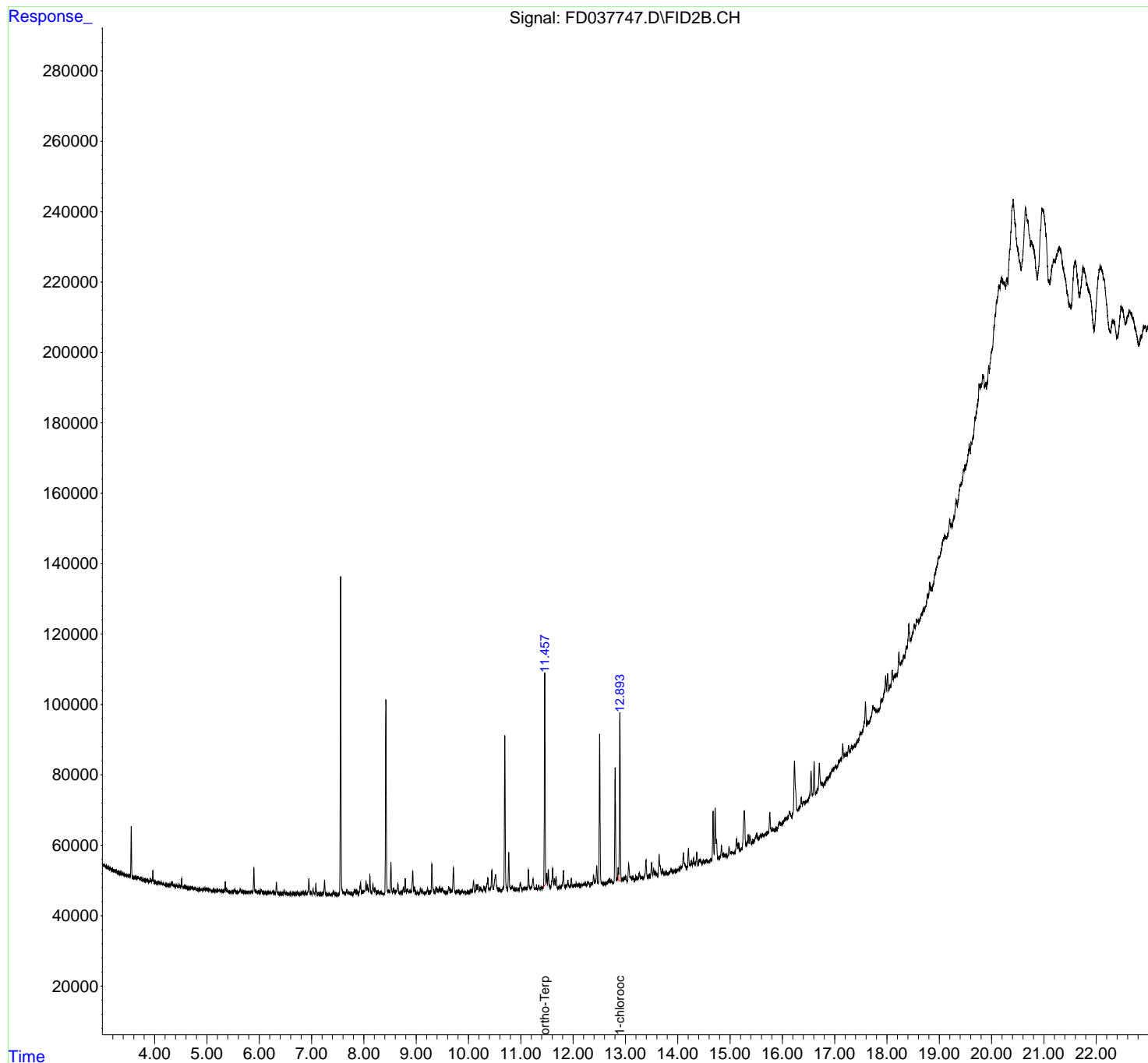
(m)=manual int.

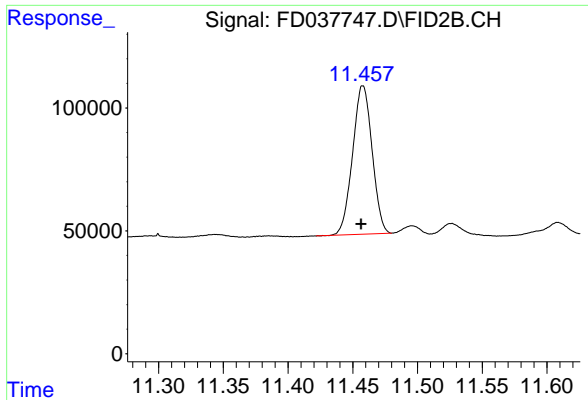
Data Path : Z:\pestpcbsrv\HPCHEM1\FID_D\Data\FD060621AL\
Data File : FD037747.D
Signal(s) : FID2B.CH
Acq On : 06 Jun 2021 17:20
Operator : DD\AJ
Sample : M2589-15DL 5X
Misc :
ALS Vial : 64 Sample Multiplier: 1

Instrument :
FID_D
ClientSampled :
18-B11(2-4)DL

Integration File: autoint1.e
Quant Time: Jun 07 06:22:41 2021
Quant Method : Z:\pestpcbsrv\HPCHEM1\FID_D\methods\Alaphatic EPH 051321.M
Quant Title : GC Extractables
QLast Update : Fri May 14 02:07:09 2021
Response via : Initial Calibration
Integrator: ChemStation 6890 Scale Mode: Large solvent peaks clipped

Volume Inj. : 1 ul
Signal Phase : Rxi-1ms
Signal Info : 20M x 0.18mm x 0.18um

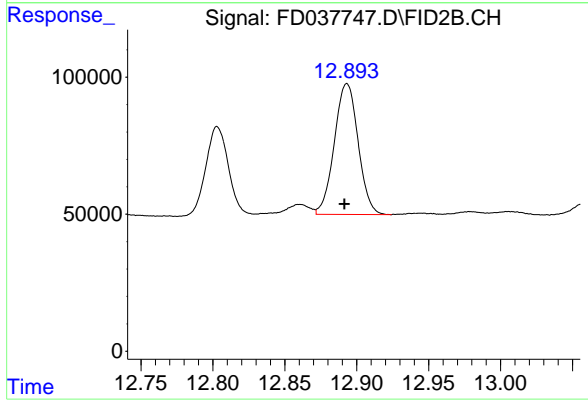




#9 ortho-Terphenyl (SURR)

R.T.: 11.458 min
Delta R.T.: 0.001 min
Response: 631872
Conc: 5.39 ug/ml

Instrument :
FID_D
ClientSampled :
18-B11(2-4)DL



#12 1-chlorooctadecane (SURR)

R.T.: 12.893 min
Delta R.T.: 0.002 min
Response: 551077
Conc: 6.06 ug/ml