

Data Path : Z:\pestpcbsrv\HPCHEM1\FID\_D\Data\FD060723AR\  
 Data File : FD045818.D  
 Signal(s) : FID2B.ch  
 Acq On : 07 Jun 2023 19:57  
 Operator : YP/AJ  
 Sample : 03046-07DL 40X  
 Misc :  
 ALS Vial : 31 Sample Multiplier: 1

**Instrument :**  
 FID\_D  
**ClientSampleId :**  
 COMP-2-6-10DL

**Manual Integrations**  
**APPROVED**  
 Reviewed By :Yogesh Patel 06/08/2023  
 Supervised By :Ankita Jodhani 06/08/2023

Integration File: autoint1.e  
 Quant Time: Jun 07 23:55:50 2023  
 Quant Method : Z:\pestpcbsrv\HPCHEM1\FID\_D\methods\Aromatic EPH 052723.M  
 Quant Title : GC Extractables  
 QLast Update : Sat May 27 06:44:25 2023  
 Response via : Initial Calibration  
 Integrator: ChemStation

Volume Inj. : 1 µl  
 Signal Phase : Rxi-1ms  
 Signal Info : 20M x 0.18mm x 0.18µm

Compound	R.T.	Response	Conc Units
System Monitoring Compounds			
4) S 2-Bromonaphthalene (S...	7.527	252325	1.400 ug/mlm
Spiked Amount	50.000	Recovery =	2.80%
6) S 2-Flurobiphenyl (SURR)	8.383	134481	1.119 ug/ml
Spiked Amount	50.000	Recovery =	2.24%
11) S ortho-Terphenyl (SURR)	11.421	206786	0.926 ug/ml
Spiked Amount	50.000	Recovery =	1.85%

Target Compounds

(f)=RT Delta > 1/2 Window

(m)=manual int.

Data Path : Z:\pestpcbsrv\HPCHEM1\FID\_D\Data\FD060723AR\  
 Data File : FD045818.D  
 Signal(s) : FID2B.ch  
 Acq On : 07 Jun 2023 19:57  
 Operator : YP/AJ  
 Sample : 03046-07DL 40X  
 Misc :  
 ALS Vial : 31 Sample Multiplier: 1

**Instrument :**

FID\_D  
**ClientSampleId :**  
 COMP-2-6-10DL

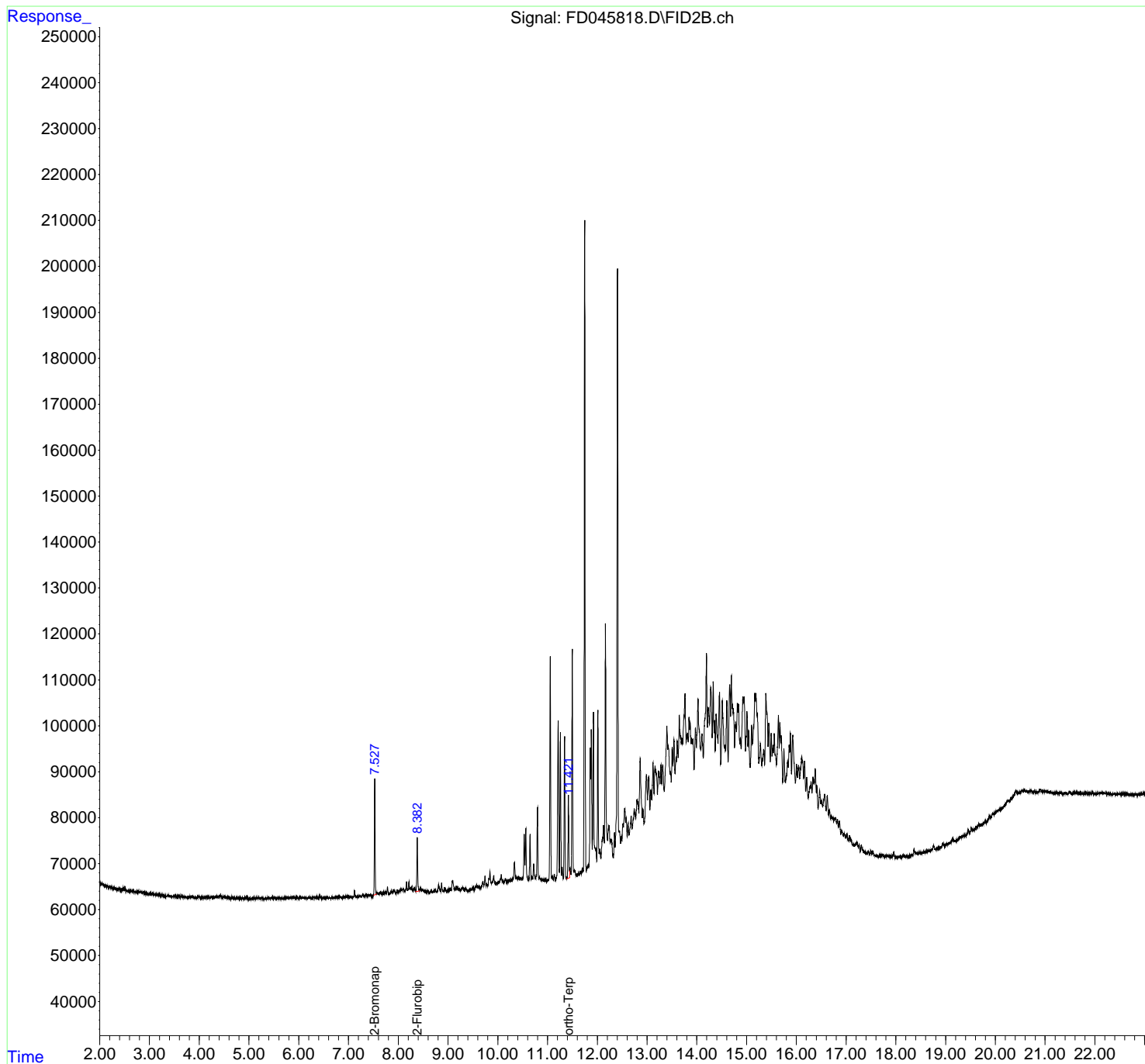
**Manual Integrations**

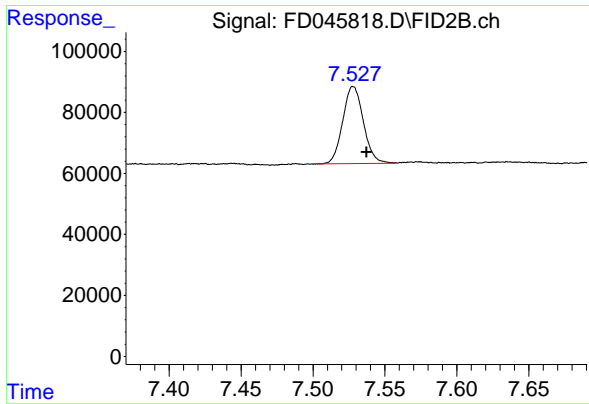
**APPROVED**

Reviewed By :Yogesh Patel 06/08/2023  
 Supervised By :Ankita Jodhani 06/08/2023

Integration File: autoint1.e  
 Quant Time: Jun 07 23:55:50 2023  
 Quant Method : Z:\pestpcbsrv\HPCHEM1\FID\_D\methods\Aromatic EPH 052723.M  
 Quant Title : GC Extractables  
 QLast Update : Sat May 27 06:44:25 2023  
 Response via : Initial Calibration  
 Integrator: ChemStation

Volume Inj. : 1 µl  
 Signal Phase : Rxi-1ms  
 Signal Info : 20M x 0.18mm x 0.18µm





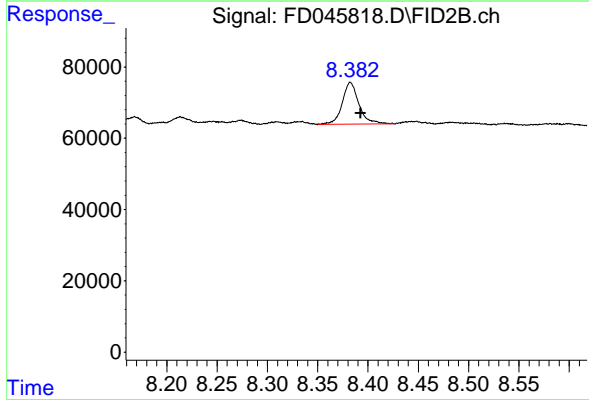
#4 2-Bromonaphthalene (SURR)

R.T.: 7.527 min  
 Delta R.T.: -0.010 min  
 Response: 252325  
 Conc: 1.40 ug/ml

Instrument : FID\_D  
 Client Sample Id : COMP-2-6-10DL

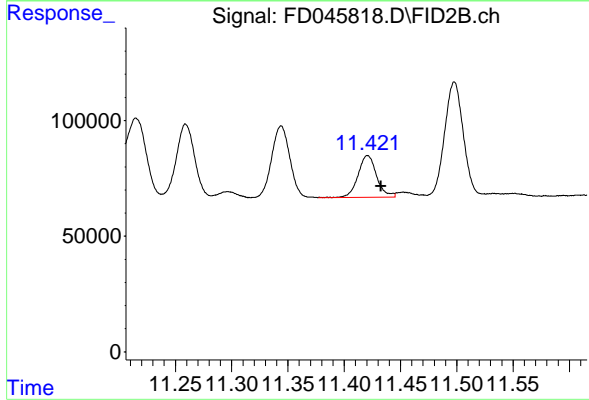
Manual Integrations  
 APPROVED

Reviewed By :Yogesh Patel 06/08/2023  
 Supervised By :Ankita Jodhani 06/08/2023



#6 2-Fluorobiphenyl (SURR)

R.T.: 8.383 min  
 Delta R.T.: -0.010 min  
 Response: 134481  
 Conc: 1.12 ug/ml



#11 ortho-Terphenyl (SURR)

R.T.: 11.421 min  
 Delta R.T.: -0.012 min  
 Response: 206786  
 Conc: 0.93 ug/ml