

Data Path : Z:\pestpcbsrv\HPCHEM1\FID\_D\Data\FD060821AL\  
 Data File : FD037802.D  
 Signal(s) : FID2B.CH  
 Acq On : 08 Jun 2021 20:46  
 Operator : DD\AJ  
 Sample : M2634-01DL 5X  
 Misc :  
 ALS Vial : 59 Sample Multiplier: 1

Integration File: autoint1.e  
 Quant Time: Jun 09 02:13:28 2021  
 Quant Method : Z:\pestpcbsrv\HPCHEM1\FID\_D\methods\Alaphatic EPH 051321.M  
 Quant Title : GC Extractables  
 QLast Update : Fri May 14 02:07:09 2021  
 Response via : Initial Calibration  
 Integrator: ChemStation 6890 Scale Mode: Large solvent peaks clipped

Volume Inj. : 1 ul  
 Signal Phase : Rxi-1ms  
 Signal Info : 20M x 0.18mm x 0.18um

Compound	R.T.	Response	Conc Units
-----			
System Monitoring Compounds			
9) S ortho-Terphenyl (SURR)	11.458	7432660	63.382 ug/ml
Spiked Amount	50.000	Recovery	= 126.76%
12) S 1-chlorooctadecane (S...	12.894	1495253	16.455 ug/ml
Spiked Amount	50.000	Recovery	= 32.91%
Target Compounds			
3) T A~Naphthalene (C11.7)	5.888	64322	0.565 ug/ml
7) T n-Hexadecane (C16)	9.710	2170454	21.035 ug/ml
8) T n-Octadecane (C18)	11.146	2466239	22.826 ug/ml
10) T n-Eicosane (C20)	12.455	1059814	9.724 ug/ml
11) T n-Heneicosane (C21)	13.062	286062	2.628 ug/ml
13) T n-Docosane (C22)	13.639	349921	3.221 ug/ml
-----			

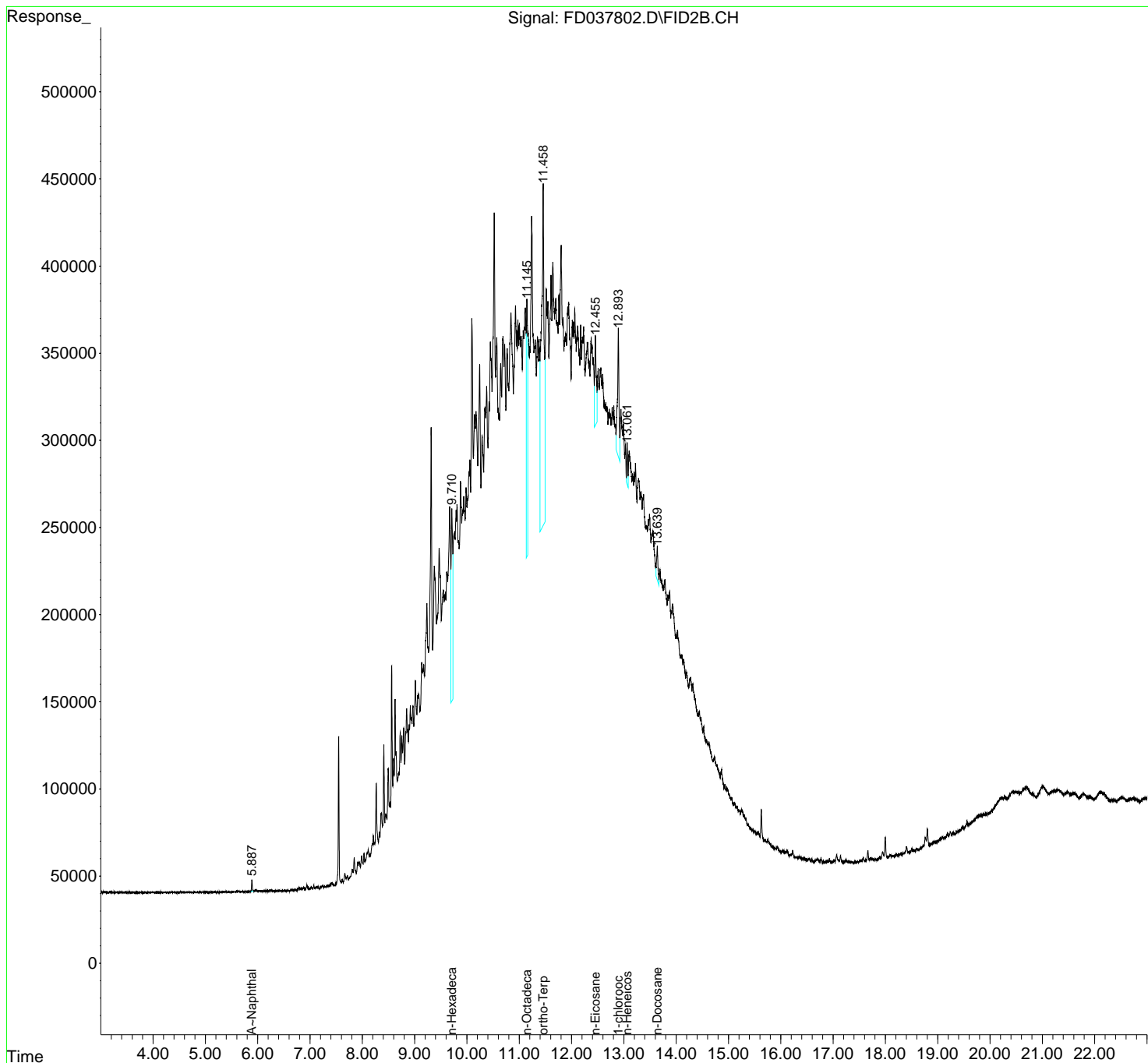
(f)=RT Delta > 1/2 Window

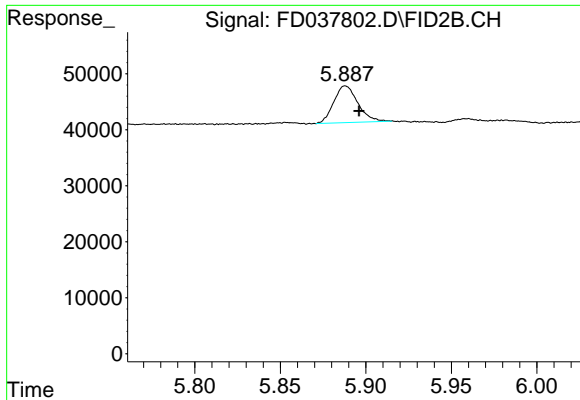
(m)=manual int.

Data Path : Z:\pestpcbsrv\HPCHEM1\FID\_D\Data\FD060821AL\  
 Data File : FD037802.D  
 Signal(s) : FID2B.CH  
 Acq On : 08 Jun 2021 20:46  
 Operator : DD\AJ  
 Sample : M2634-01DL 5X  
 Misc :  
 ALS Vial : 59 Sample Multiplier: 1

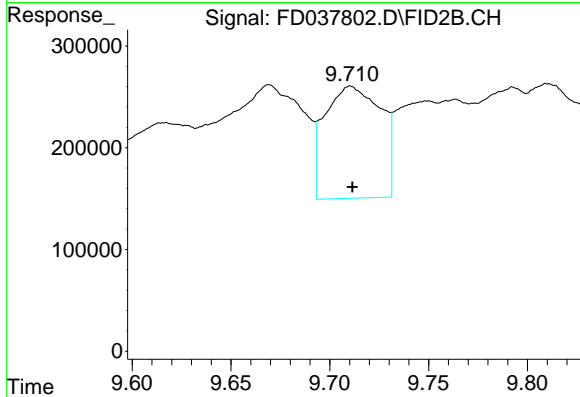
Integration File: autoint1.e  
 Quant Time: Jun 09 02:13:28 2021  
 Quant Method : Z:\pestpcbsrv\HPCHEM1\FID\_D\methods\Alaphatic EPH 051321.M  
 Quant Title : GC Extractables  
 QLast Update : Fri May 14 02:07:09 2021  
 Response via : Initial Calibration  
 Integrator: ChemStation 6890 Scale Mode: Large solvent peaks clipped

Volume Inj. : 1 ul  
 Signal Phase : Rxi-1ms  
 Signal Info : 20M x 0.18mm x 0.18um

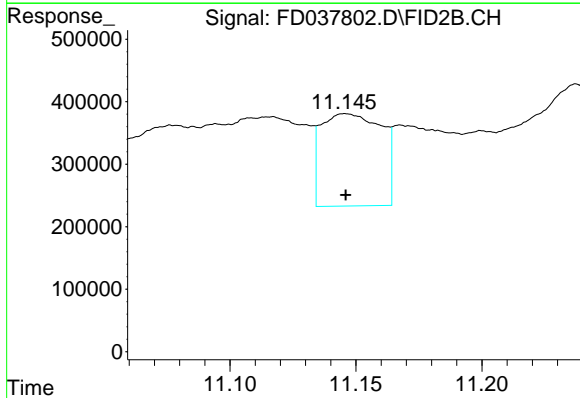




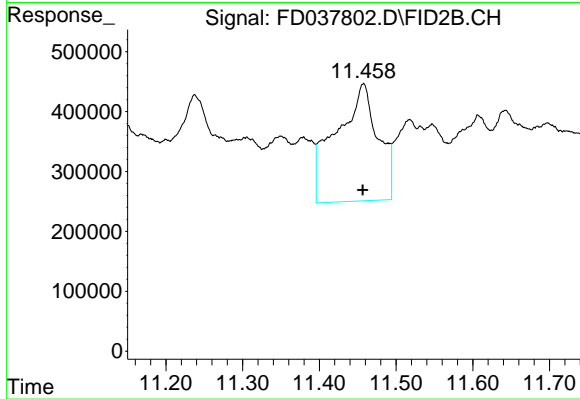
#3 A~Naphthalene (C11.7)  
 R.T.: 5.888 min  
 Delta R.T.: -0.008 min  
 Response: 64322  
 Conc: 0.56 ug/ml



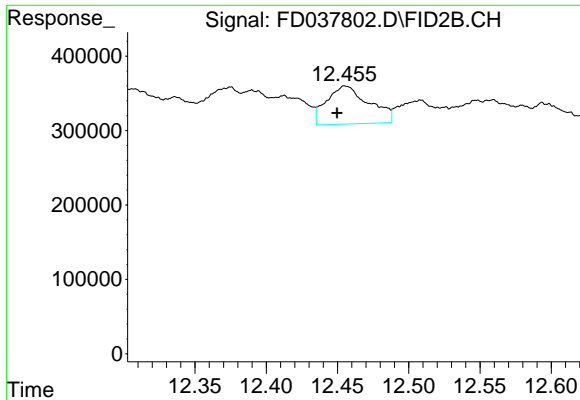
#7 n-Hexadecane (C16)  
 R.T.: 9.710 min  
 Delta R.T.: 0.000 min  
 Response: 2170454  
 Conc: 21.03 ug/ml



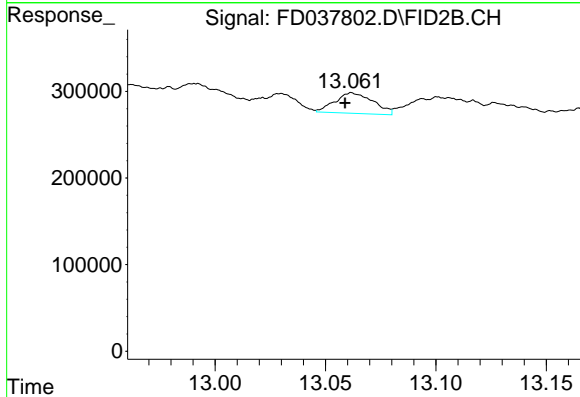
#8 n-Octadecane (C18)  
 R.T.: 11.146 min  
 Delta R.T.: 0.000 min  
 Response: 2466239  
 Conc: 22.83 ug/ml



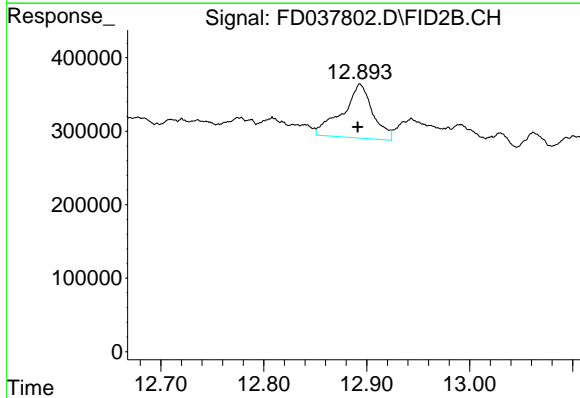
#9 ortho-Terphenyl (SURR)  
 R.T.: 11.458 min  
 Delta R.T.: 0.001 min  
 Response: 7432660  
 Conc: 63.38 ug/ml



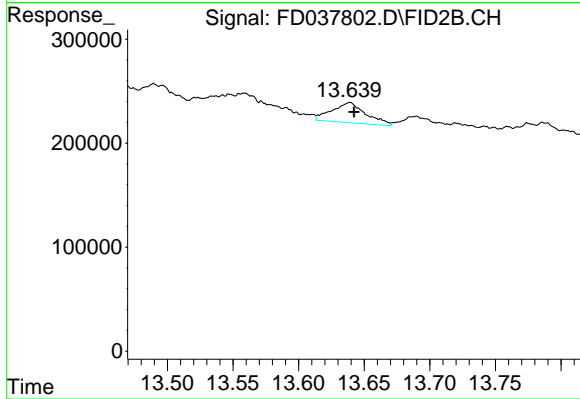
#10 n-Eicosane (C20)  
 R.T.: 12.455 min  
 Delta R.T.: 0.006 min  
 Response: 1059814  
 Conc: 9.72 ug/ml



#11 n-Heneicosane (C21)  
 R.T.: 13.062 min  
 Delta R.T.: 0.003 min  
 Response: 286062  
 Conc: 2.63 ug/ml



#12 1-chlorooctadecane (SURR)  
 R.T.: 12.894 min  
 Delta R.T.: 0.002 min  
 Response: 1495253  
 Conc: 16.46 ug/ml



#13 n-Docosane (C22)  
 R.T.: 13.639 min  
 Delta R.T.: -0.003 min  
 Response: 349921  
 Conc: 3.22 ug/ml