

Data Path : Z:\pestpcbsrv\HPCHEM1\FID_D\Data\FD060821AL\
 Data File : FD037806.D
 Signal(s) : FID2B.CH
 Acq On : 08 Jun 2021 23:25
 Operator : DD\AJ
 Sample : M2634-04
 Misc :
 ALS Vial : 63 Sample Multiplier: 1

Integration File: autoint1.e
 Quant Time: Jun 09 02:14:17 2021
 Quant Method : Z:\pestpcbsrv\HPCHEM1\FID_D\methods\Alaphatic EPH 051321.M
 Quant Title : GC Extractables
 QLast Update : Fri May 14 02:07:09 2021
 Response via : Initial Calibration
 Integrator: ChemStation 6890 Scale Mode: Large solvent peaks clipped

Volume Inj. : 1 ul
 Signal Phase : Rxi-1ms
 Signal Info : 20M x 0.18mm x 0.18um

Compound	R.T.	Response	Conc Units

System Monitoring Compounds			
9) S ortho-Terphenyl (SURR)	11.487	79216552	675.518 ug/ml
Spiked Amount	50.000	Recovery	= 1351.04%
12) S 1-chlorooctadecane (S...	12.901	14537232	159.983 ug/ml
Spiked Amount	50.000	Recovery	= 319.97%
Target Compounds			
3) T A~Naphthalene (C11.7)	5.886	249256	2.189 ug/ml
5) T A~2-methylnaphthalene...	6.938	101749	0.879 ug/ml
6) T n-Tetradecane (C14)	8.115	1476394	14.166 ug/ml
7) T n-Hexadecane (C16)	9.734	21378507	207.188 ug/ml
8) T n-Octadecane (C18)	11.141	50511333	467.501 ug/ml
10) T n-Eicosane (C20)	12.436	34776694	319.097 ug/ml
11) T n-Heneicosane (C21)	13.059	19327864	177.541 ug/ml
13) T n-Docosane (C22)	13.667	26525857	244.178 ug/ml
14) T n-Tetracosane (C24)	14.738	1897117	17.508 ug/ml
19) T n-Tetratriacontane (C34)	19.242f	179496	1.766 ug/ml

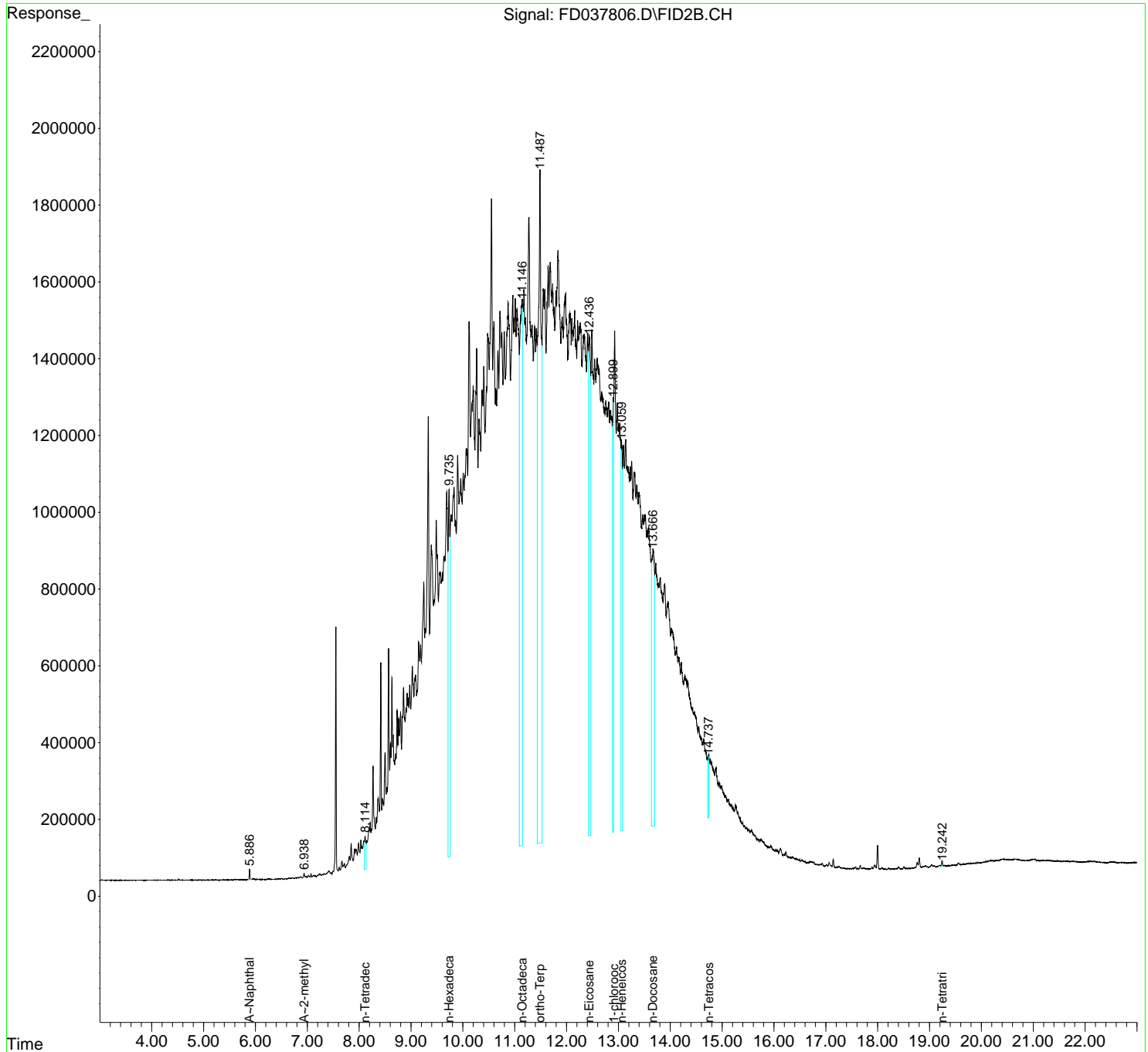
(f)=RT Delta > 1/2 Window

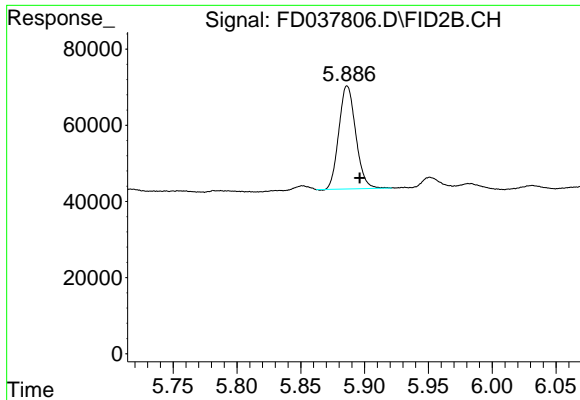
(m)=manual int.

Data Path : Z:\pestpcbsrv\HPCHEM1\FID_D\Data\FD060821AL\
 Data File : FD037806.D
 Signal(s) : FID2B.CH
 Acq On : 08 Jun 2021 23:25
 Operator : DD\AJ
 Sample : M2634-04
 Misc :
 ALS Vial : 63 Sample Multiplier: 1

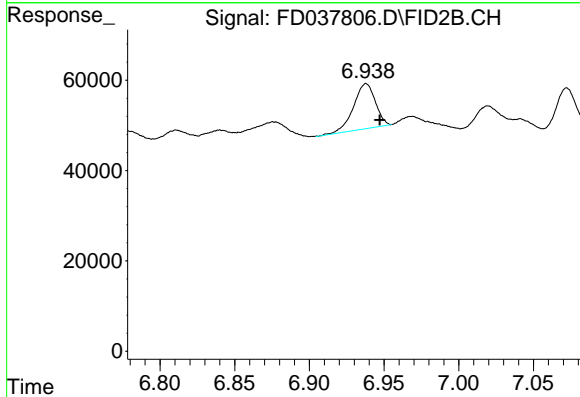
Integration File: autoint1.e
 Quant Time: Jun 09 02:14:17 2021
 Quant Method : Z:\pestpcbsrv\HPCHEM1\FID_D\methods\Alaphatic EPH 051321.M
 Quant Title : GC Extractables
 QLast Update : Fri May 14 02:07:09 2021
 Response via : Initial Calibration
 Integrator: ChemStation 6890 Scale Mode: Large solvent peaks clipped

Volume Inj. : 1 ul
 Signal Phase : Rxi-1ms
 Signal Info : 20M x 0.18mm x 0.18um

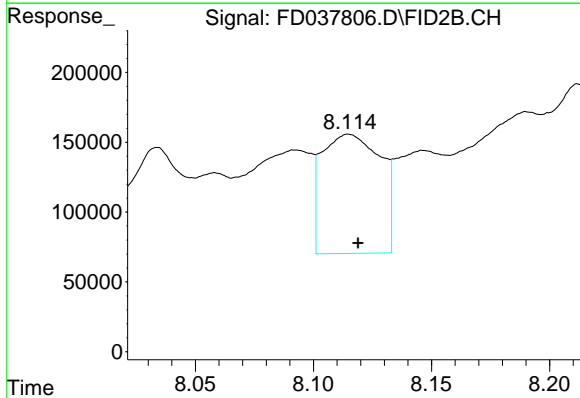




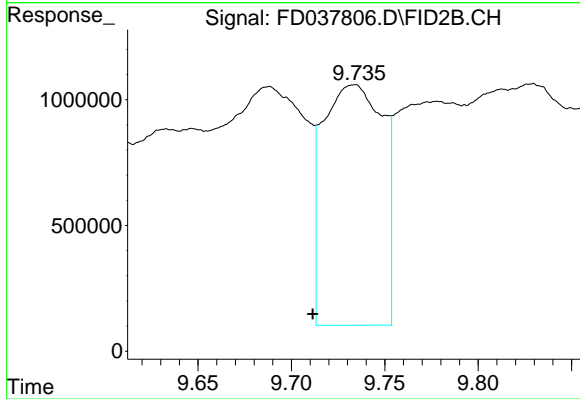
#3 A~Naphthalene (C11.7)
 R.T.: 5.886 min
 Delta R.T.: -0.010 min
 Response: 249256
 Conc: 2.19 ug/ml



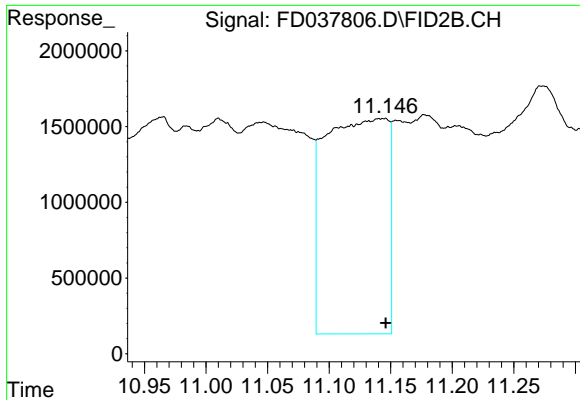
#5 A~2-methylnaphthalene (C12.89)
 R.T.: 6.938 min
 Delta R.T.: -0.009 min
 Response: 101749
 Conc: 0.88 ug/ml



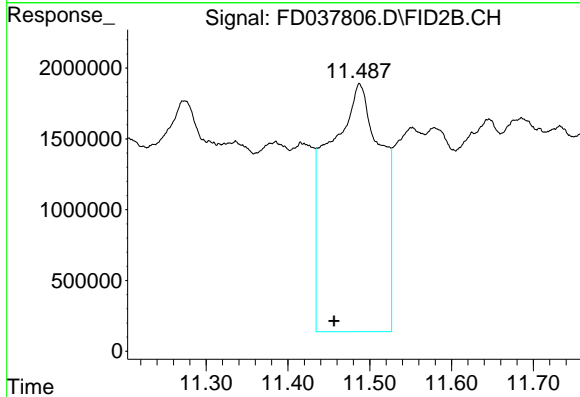
#6 n-Tetradecane (C14)
 R.T.: 8.115 min
 Delta R.T.: -0.004 min
 Response: 1476394
 Conc: 14.17 ug/ml



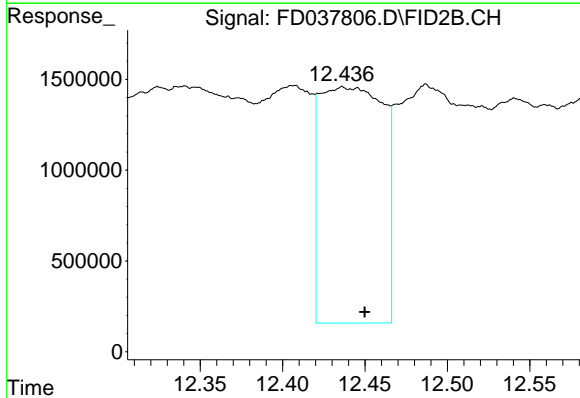
#7 n-Hexadecane (C16)
 R.T.: 9.734 min
 Delta R.T.: 0.022 min
 Response: 21378507
 Conc: 207.19 ug/ml



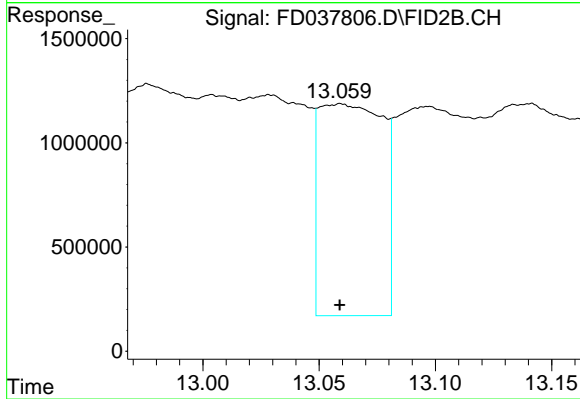
#8 n-Octadecane (C18)
 R.T.: 11.141 min
 Delta R.T.: -0.005 min
 Response: 50511333
 Conc: 467.50 ug/ml



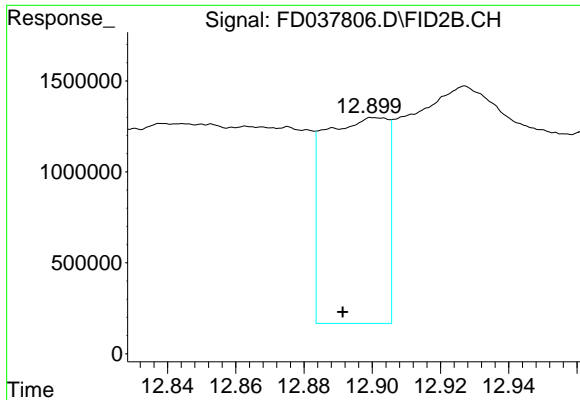
#9 ortho-Terphenyl (SURRE)
 R.T.: 11.487 min
 Delta R.T.: 0.031 min
 Response: 79216552
 Conc: 675.52 ug/ml



#10 n-Eicosane (C20)
 R.T.: 12.436 min
 Delta R.T.: -0.014 min
 Response: 34776694
 Conc: 319.10 ug/ml

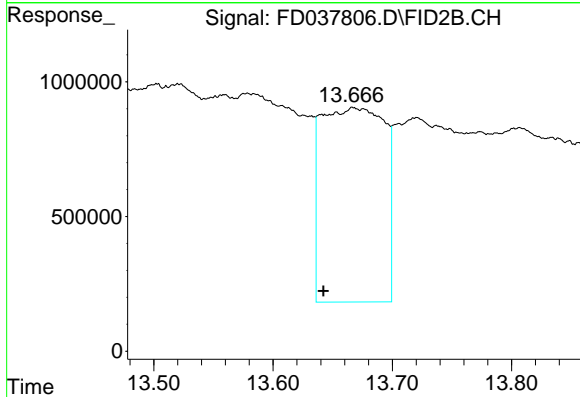


#11 n-Heneicosane (C21)
 R.T.: 13.059 min
 Delta R.T.: 0.000 min
 Response: 19327864
 Conc: 177.54 ug/ml



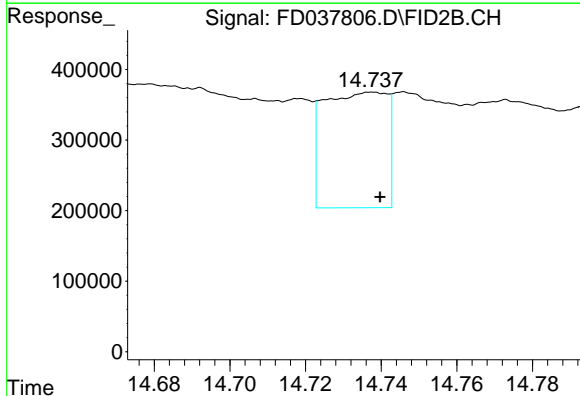
#12 1-chlorooctadecane (SURR)

R.T.: 12.901 min
Delta R.T.: 0.010 min
Response: 14537232
Conc: 159.98 ug/ml



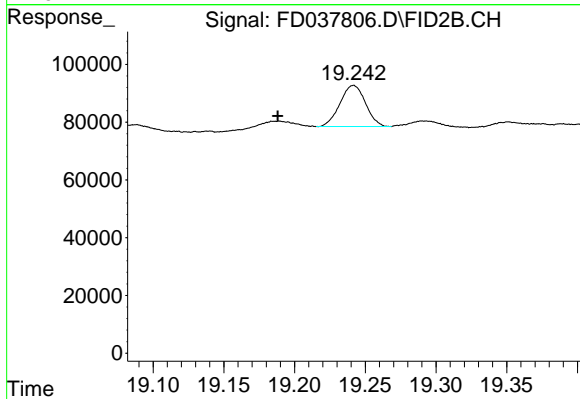
#13 n-Docosane (C22)

R.T.: 13.667 min
Delta R.T.: 0.025 min
Response: 26525857
Conc: 244.18 ug/ml



#14 n-Tetracosane (C24)

R.T.: 14.738 min
Delta R.T.: -0.002 min
Response: 1897117
Conc: 17.51 ug/ml



#19 n-Tetratriacontane (C34)

R.T.: 19.242 min
Delta R.T.: 0.054 min
Response: 179496
Conc: 1.77 ug/ml