

Data Path : Z:\pestpcbsrv\HPCHEM1\FID_D\Data\FD060921AL\
 Data File : FD037832.D
 Signal(s) : FID2B.CH
 Acq On : 09 Jun 2021 20:28
 Operator : DD\AJ
 Sample : M2651-03
 Misc :
 ALS Vial : 60 Sample Multiplier: 1

Instrument :
 FID_D
 ClientSampleId :

Integration File: autoint1.e
 Quant Time: Jun 10 02:19:45 2021
 Quant Method : Z:\pestpcbsrv\HPCHEM1\FID_D\methods\Alaphatic EPH 051321.M
 Quant Title : GC Extractables
 QLast Update : Fri May 14 02:07:09 2021
 Response via : Initial Calibration
 Integrator: ChemStation 6890 Scale Mode: Large solvent peaks clipped

Volume Inj. : 1 ul
 Signal Phase : Rxi-1ms
 Signal Info : 20M x 0.18mm x 0.18um

Compound	R.T.	Response	Conc Units

System Monitoring Compounds			
9) S ortho-Terphenyl (SURR)	11.446	4008540	34.183 ug/ml
Spiked Amount	50.000	Recovery	= 68.37%
12) S 1-chlorooctadecane (S...	12.882	3312686	36.456 ug/ml
Spiked Amount	50.000	Recovery	= 72.91%
Target Compounds			
3) T A~Naphthalene (C11.7)	5.942	478000	4.198 ug/ml
6) T n-Tetradecane (C14)	8.070	142193	1.364 ug/ml
10) T n-Eicosane (C20)	12.489	566274	5.196 ug/ml
14) T n-Tetracosane (C24)	14.697	378035	3.489 ug/ml
16) T n-Octacosane (C28)	16.691	174647	1.648 ug/ml
17) T n-Tricontane (C30)	17.573	156358	1.485 ug/ml
18) T n-Dotriacontane (C32)	18.402	125064	1.201 ug/ml
21) T n-Octatriacontane (C38)	20.635	43455	0.473 ug/ml

(f)=RT Delta > 1/2 Window

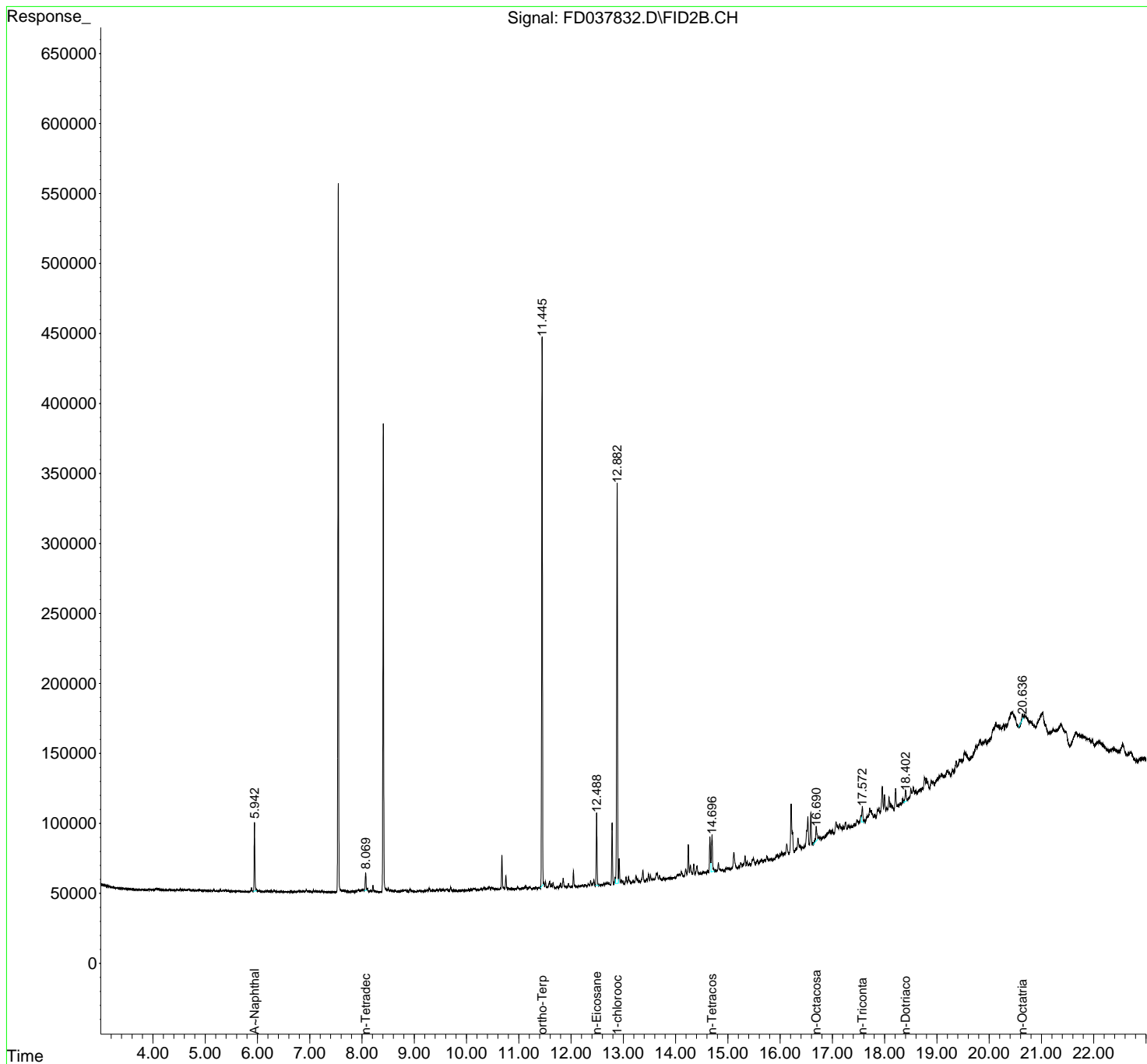
(m)=manual int.

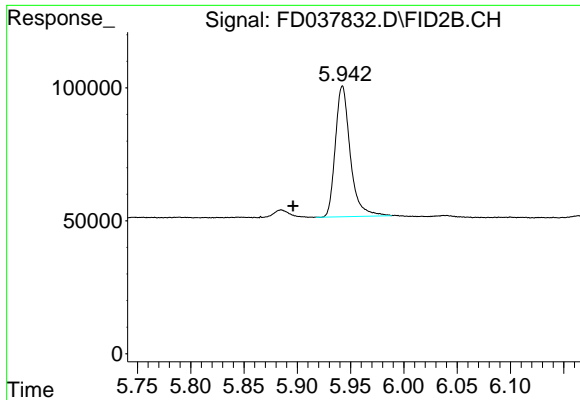
Data Path : Z:\pestpcbsrv\HPCHEM1\FID_D\Data\FD060921AL\
 Data File : FD037832.D
 Signal(s) : FID2B.CH
 Acq On : 09 Jun 2021 20:28
 Operator : DD\AJ
 Sample : M2651-03
 Misc :
 ALS Vial : 60 Sample Multiplier: 1

Instrument :
 FID_D
 ClientSampled :

Integration File: autoint1.e
 Quant Time: Jun 10 02:19:45 2021
 Quant Method : Z:\pestpcbsrv\HPCHEM1\FID_D\methods\Alaphatic EPH 051321.M
 Quant Title : GC Extractables
 QLast Update : Fri May 14 02:07:09 2021
 Response via : Initial Calibration
 Integrator: ChemStation 6890 Scale Mode: Large solvent peaks clipped

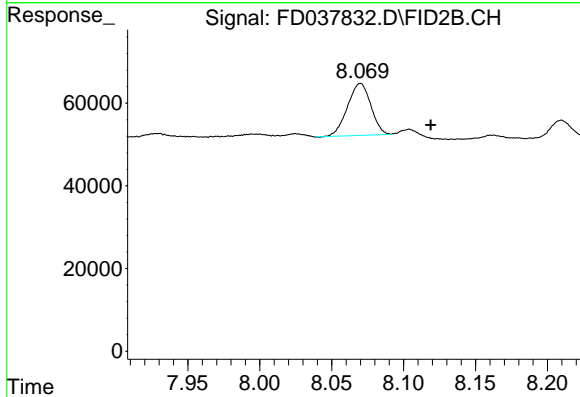
Volume Inj. : 1 ul
 Signal Phase : Rxi-1ms
 Signal Info : 20M x 0.18mm x 0.18um



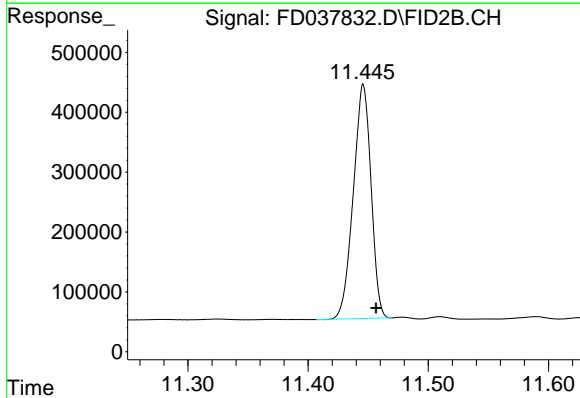


#3 A~Naphthalene (C11.7)
 R.T.: 5.942 min
 Delta R.T.: 0.046 min
 Response: 478000
 Conc: 4.20 ug/ml

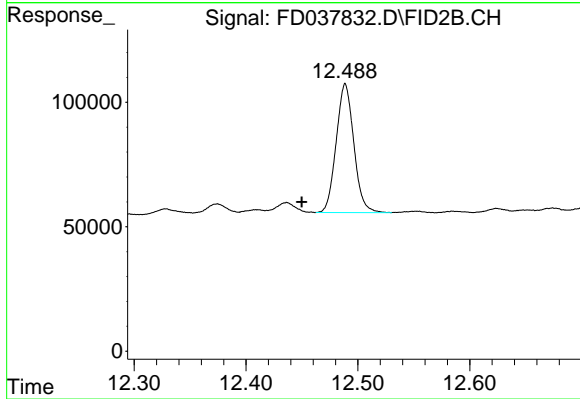
Instrument :
 FID_D
 ClientSampled :



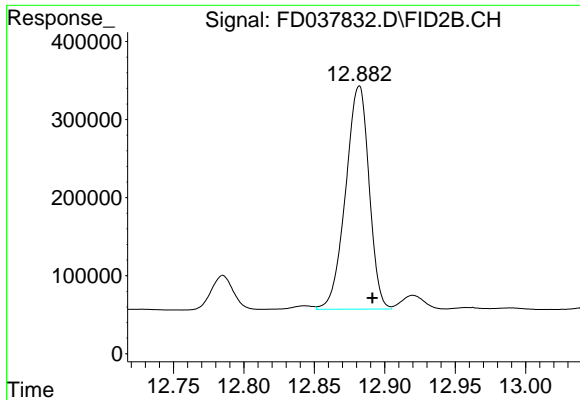
#6 n-Tetradecane (C14)
 R.T.: 8.070 min
 Delta R.T.: -0.049 min
 Response: 142193
 Conc: 1.36 ug/ml



#9 ortho-Terphenyl (SURR)
 R.T.: 11.446 min
 Delta R.T.: -0.011 min
 Response: 4008540
 Conc: 34.18 ug/ml



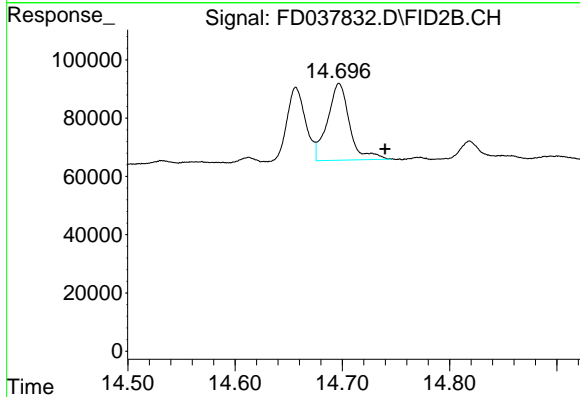
#10 n-Eicosane (C20)
 R.T.: 12.489 min
 Delta R.T.: 0.039 min
 Response: 566274
 Conc: 5.20 ug/ml



#12 1-chlorooctadecane (SURR)

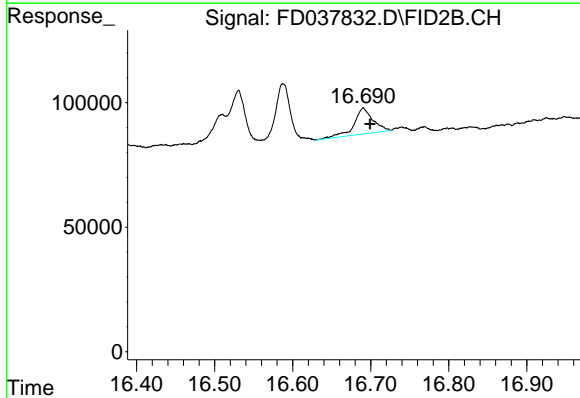
R.T.: 12.882 min
Delta R.T.: -0.009 min
Response: 3312686
Conc: 36.46 ug/ml

Instrument :
FID_D
ClientSampleId :



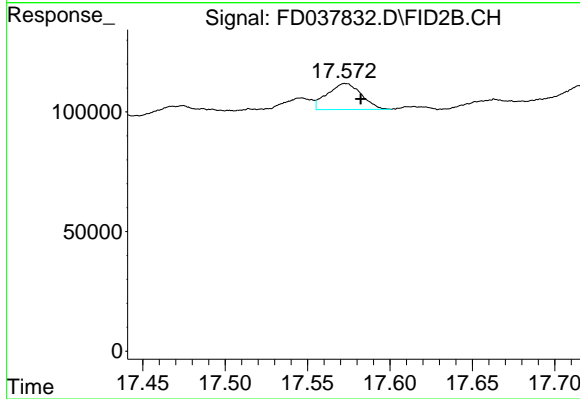
#14 n-Tetracosane (C24)

R.T.: 14.697 min
Delta R.T.: -0.043 min
Response: 378035
Conc: 3.49 ug/ml



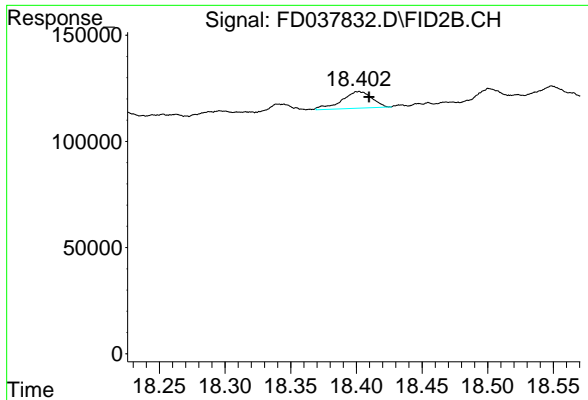
#16 n-Octacosane (C28)

R.T.: 16.691 min
Delta R.T.: -0.009 min
Response: 174647
Conc: 1.65 ug/ml



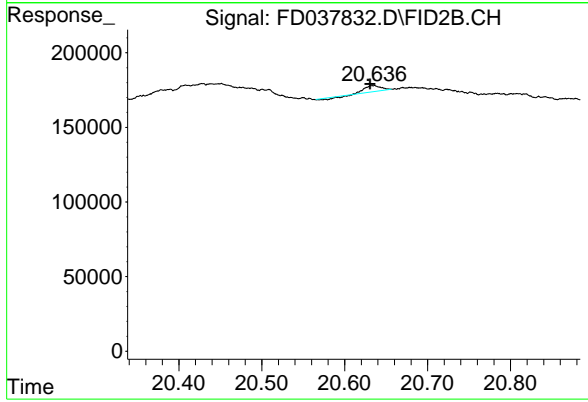
#17 n-Tricontane (C30)

R.T.: 17.573 min
Delta R.T.: -0.009 min
Response: 156358
Conc: 1.49 ug/ml



#18 n-Dotriacontane (C32)
R.T.: 18.402 min
Delta R.T.: -0.008 min
Response: 125064
Conc: 1.20 ug/ml

Instrument :
FID_D
ClientSampleId :



#21 n-Octatriacontane (C38)
R.T.: 20.635 min
Delta R.T.: 0.004 min
Response: 43455
Conc: 0.47 ug/ml