

Data Path : Z:\pestpcbsrv\HPCHEM1\FID_D\Data\FD061021AR\
 Data File : FD037873.D
 Signal(s) : FID2B.CH
 Acq On : 11 Jun 2021 17:28
 Operator : DD\AJ
 Sample : PB136971BL
 Misc :
 ALS Vial : 56 Sample Multiplier: 1

Instrument :
 FID_D
 ClientSampleId :

Integration File: autoint1.e
 Quant Time: Jun 11 23:52:38 2021
 Quant Method : Z:\pestpcbsrv\HPCHEM1\FID_D\methods\Aromatic EPH 061021.M
 Quant Title : GC Extractables
 QLast Update : Fri Jun 11 11:35:39 2021
 Response via : Initial Calibration
 Integrator: ChemStation 6890 Scale Mode: Large solvent peaks clipped

Volume Inj. : 1 µl
 Signal Phase : Rxi-1ms
 Signal Info : 20M x 0.18mm x 0.18µm

Compound	R.T.	Response	Conc Units

System Monitoring Compounds			
4) S 2-Bromonaphthalene (S...	7.545	6726526	48.026 ug/ml
Spiked Amount 50.000		Recovery =	96.05%
6) S 2-Fluorobiphenyl (SURR)	8.405	4257198	44.956 ug/ml
Spiked Amount 50.000 Range 0 - 131		Recovery =	89.91%
11) S ortho-Terphenyl (SURR)	11.445	6205284	38.750 ug/ml
Spiked Amount 50.000		Recovery =	77.50%

Target Compounds

(f)=RT Delta > 1/2 Window

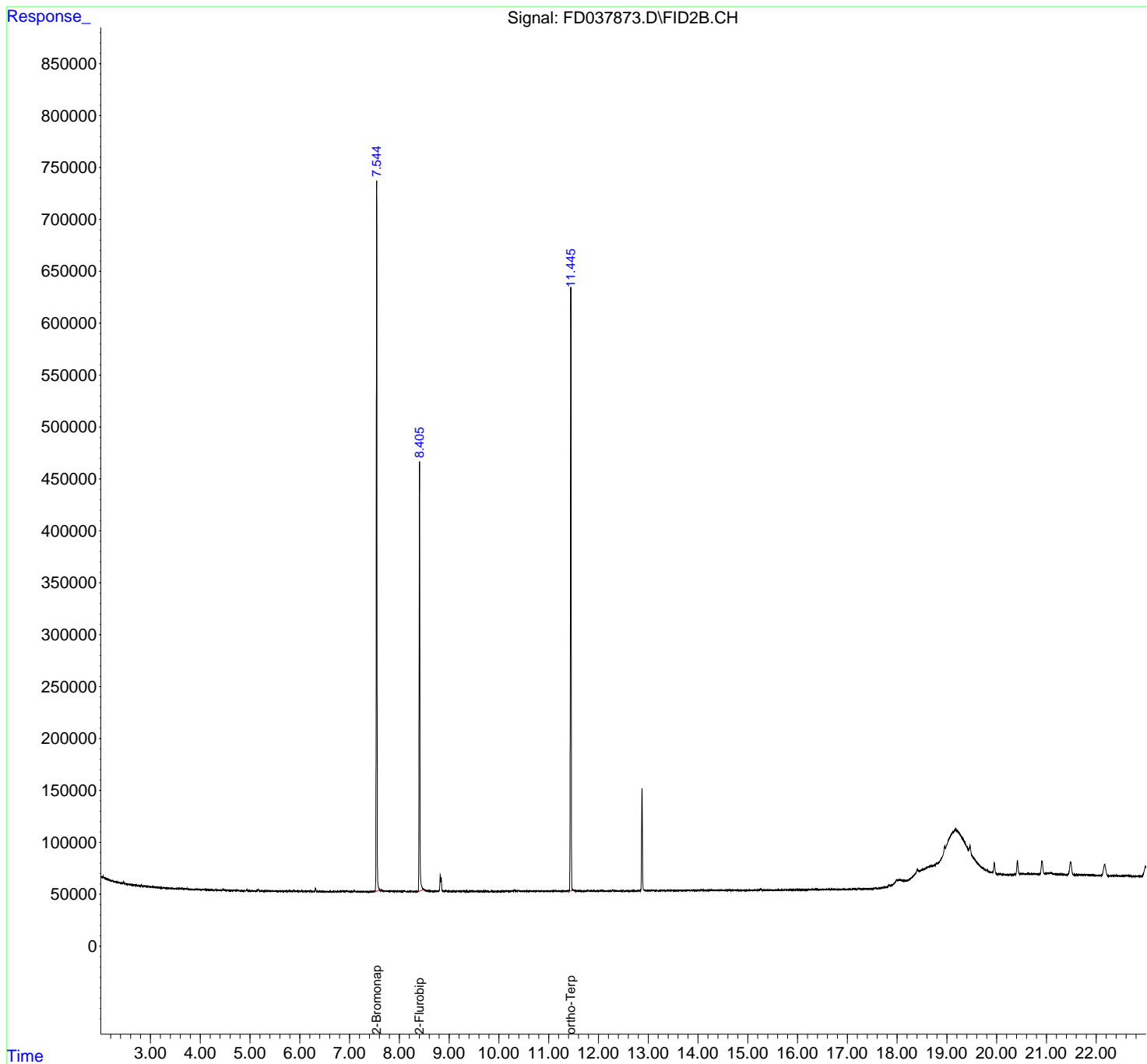
(m)=manual int.

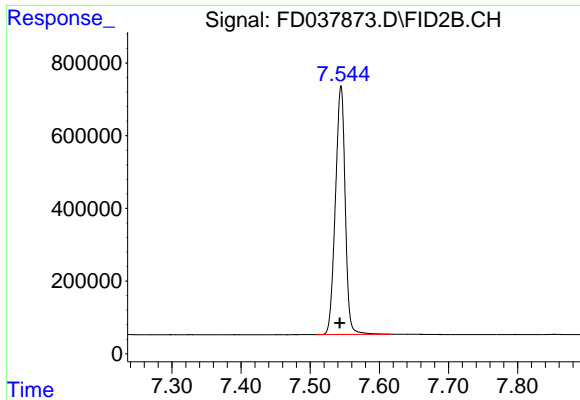
Data Path : Z:\pestpcbsrv\HPCHEM1\FID_D\Data\FD061021AR\
Data File : FD037873.D
Signal(s) : FID2B.CH
Acq On : 11 Jun 2021 17:28
Operator : DD\AJ
Sample : PB136971BL
Misc :
ALS Vial : 56 Sample Multiplier: 1

Instrument :
FID_D
ClientSampleId :

Integration File: autoint1.e
Quant Time: Jun 11 23:52:38 2021
Quant Method : Z:\pestpcbsrv\HPCHEM1\FID_D\methods\Aromatic EPH 061021.M
Quant Title : GC Extractables
QLast Update : Fri Jun 11 11:35:39 2021
Response via : Initial Calibration
Integrator: ChemStation 6890 Scale Mode: Large solvent peaks clipped

Volume Inj. : 1 µl
Signal Phase : Rxi-1ms
Signal Info : 20M x 0.18mm x 0.18µm

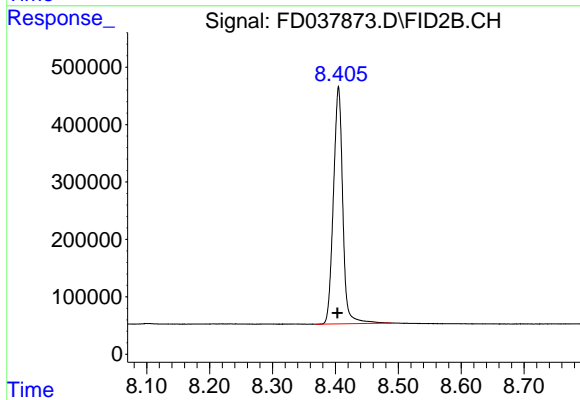




#4 2-Bromonaphthalene (SURR)

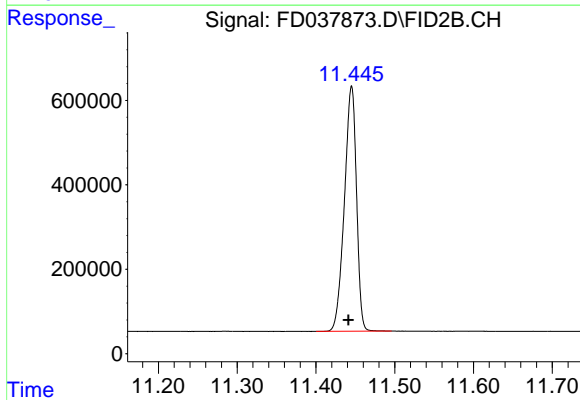
R.T.: 7.545 min
Delta R.T.: 0.002 min
Response: 6726526
Conc: 48.03 ug/ml

Instrument :
FID_D
ClientSampleId :



#6 2-Fluorobiphenyl (SURR)

R.T.: 8.405 min
Delta R.T.: 0.002 min
Response: 4257198
Conc: 44.96 ug/ml



#11 ortho-Terphenyl (SURR)

R.T.: 11.445 min
Delta R.T.: 0.004 min
Response: 6205284
Conc: 38.75 ug/ml