

Data Path : Z:\pestpcbsrv\HPCHEM1\FID_D\Data\FD061520AR\
 Data File : FD033701.D
 Signal(s) : FID2B.CH
 Acq On : 15 Jun 2020 10:07
 Operator : DD\AJ
 Sample : 20 PPM AROMATIC HC STD
 Misc :
 ALS Vial : 52 Sample Multiplier: 1

Integration File: autoint1.e
 Quant Time: Jun 16 02:36:34 2020
 Quant Method : Z:\pestpcbsrv\HPCHEM1\FID_D\methods\Aromatic EPH 051920.M
 Quant Title : GC Extractables
 QLast Update : Wed May 20 09:14:43 2020
 Response via : Initial Calibration
 Integrator: ChemStation 6890 Scale Mode: Large solvent peaks clipped

Volume Inj. : 1 µl
 Signal Phase : Rxi-1ms
 Signal Info : 20M x 0.18mm x 0.18µm

Compound	R.T.	Response	Conc Units
System Monitoring Compounds			
4) S 2-Bromonaphthalene (S...	7.571	1877006	18.051 ug/ml
Spiked Amount	50.000	Recovery =	36.10%
6) S 2-Fluorobiphenyl (SURR)	8.433	1254787	18.154 ug/ml
Spiked Amount	50.000 Range	0 - 131	Recovery = 36.31%
11) S ortho-Terphenyl (SURR)	11.460	2230316	17.011 ug/ml
Spiked Amount	50.000	Recovery =	34.02%
Target Compounds			
1) T 1,2,3-Trimethylbenzen...	4.380	2188746	19.199 ug/ml
2) T Naphthalene (C11.7)	5.914	2153055	18.675 ug/ml
3) T 2-Methylnaphthalene (...)	6.963	2159662	18.186 ug/ml
5) T Acenaphthylene (C15.06)	8.234	2148037	17.533 ug/ml
7) T Acenaphthene (C15.5)	8.528	2220446	17.192 ug/ml
8) T Fluorene (C16.55)	9.308	2112885	17.789 ug/ml
9) T Phenanthrene (C19.36)	10.702	2120531	17.287 ug/ml
10) T Anthracene (C19.43)	10.776	2076861	17.061 ug/ml
12) T Fluoranthene (C21.85)	12.510	2119109	16.809 ug/ml
13) T Pyrene (C20.8)	12.806	2065749	16.948 ug/ml
14) T Benzo[a]anthracene (C...	14.678	1988986	17.655 ug/ml
15) T Chrysene (C27.41)	14.720	2252495	17.328 ug/ml
16) T benzo[b]fluoranthene ...	16.231	2122429	18.589 ug/ml
17) T Bnezo[k]fluoranthene ...	16.262	2049956	16.471 ug/ml
18) T Benzo[a]pyrene (C31.34)	16.611	2015191	17.187 ug/ml
19) T Indeno[1,2,3-cd]pyren...	17.983	2032849	19.913 ug/ml
20) T Dibenz[a,h]anthracene...	18.016	2111403	17.494 ug/ml
21) T Benzo[g,h,i]perylene ...	18.236	2055443	18.448 ug/ml

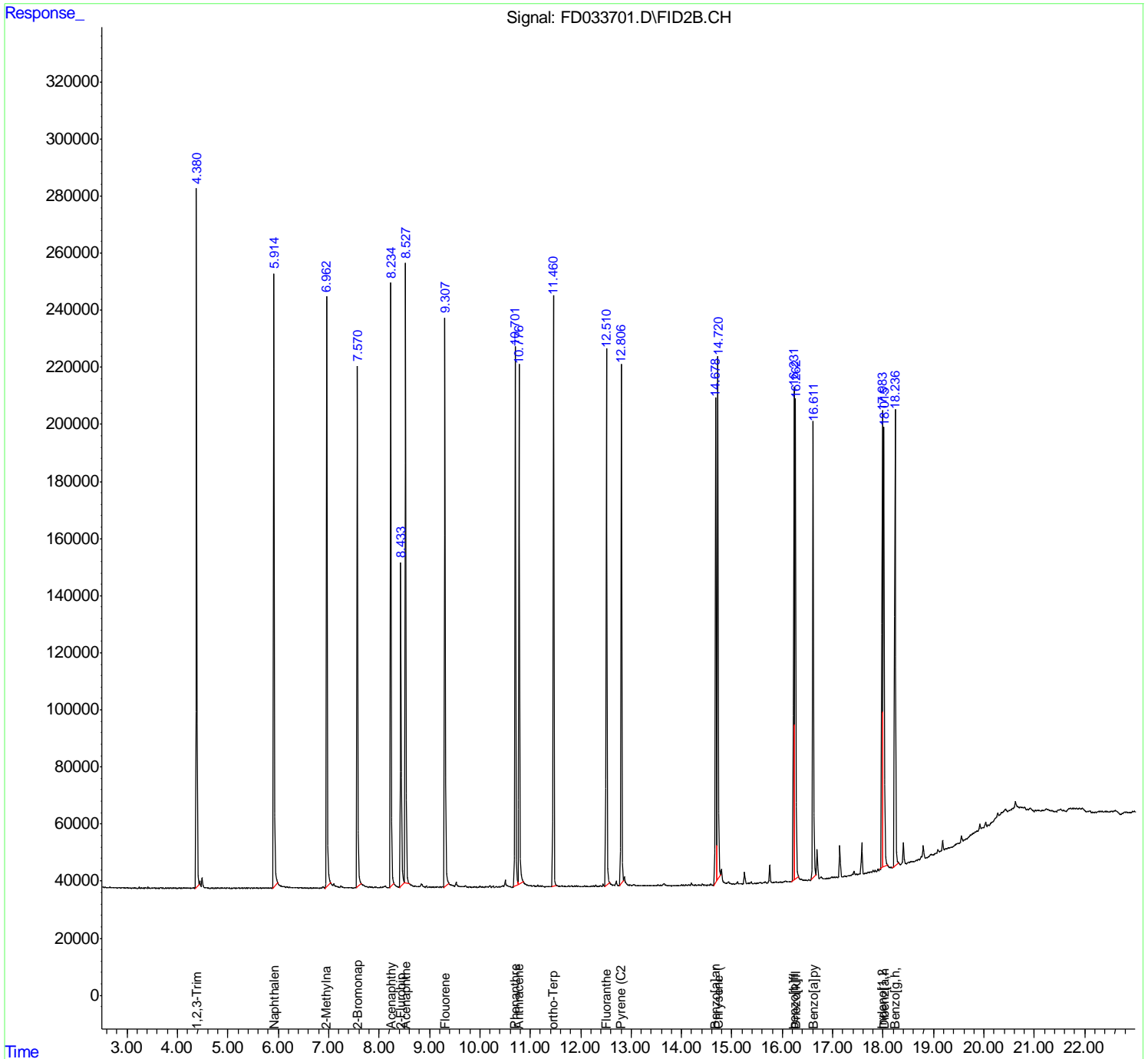
(f)=RT Delta > 1/2 Window

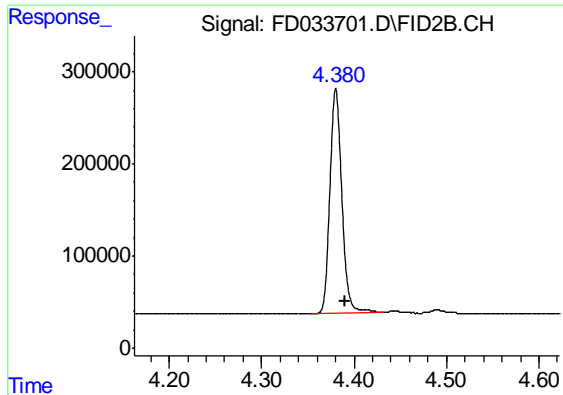
(m)=manual int.

Data Path : Z:\pestpcbsrv\HPCHEM1\FID_D\Data\FD061520AR\
 Data File : FD033701.D
 Signal(s) : FID2B.CH
 Acq On : 15 Jun 2020 10:07
 Operator : DD\AJ
 Sample : 20 PPM AROMATIC HC STD
 Misc :
 ALS Vial : 52 Sample Multiplier: 1

Integration File: autoint1.e
 Quant Time: Jun 16 02:36:34 2020
 Quant Method : Z:\pestpcbsrv\HPCHEM1\FID_D\methods\Aromatic EPH 051920.M
 Quant Title : GC Extractables
 QLast Update : Wed May 20 09:14:43 2020
 Response via : Initial Calibration
 Integrator: ChemStation 6890 Scale Mode: Large solvent peaks clipped

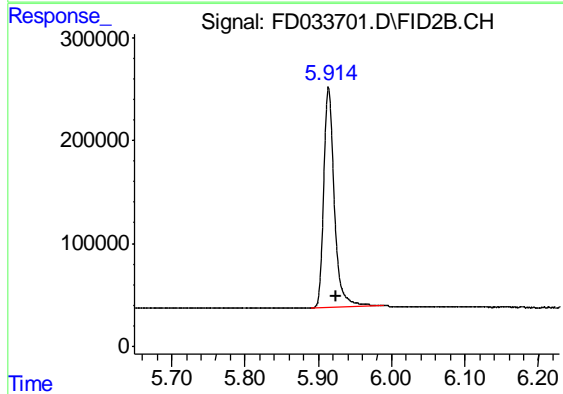
Volume Inj. : 1 µl
 Signal Phase : Rxi-1ms
 Signal Info : 20M x 0.18mm x 0.18µm





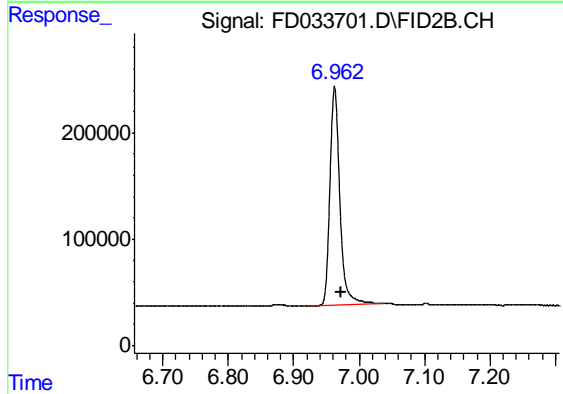
#1 1,2,3-Trimethylbenzene (C10.1)

R.T.: 4.380 min
Delta R.T.: -0.010 min
Response: 2188746
Conc: 19.20 ug/ml



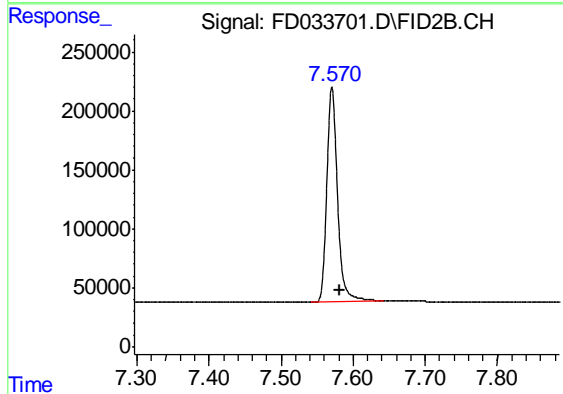
#2 Naphthalene (C11.7)

R.T.: 5.914 min
Delta R.T.: -0.011 min
Response: 2153055
Conc: 18.67 ug/ml



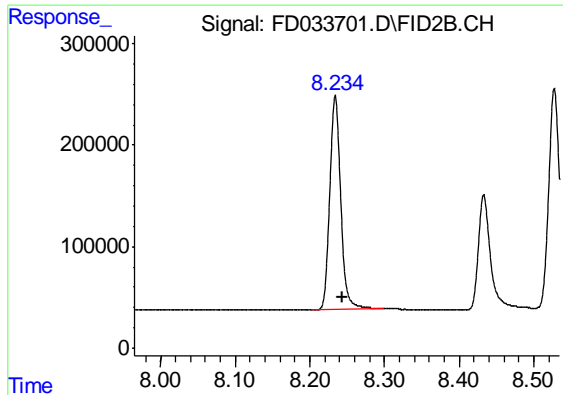
#3 2-Methylnaphthalene (C12.89)

R.T.: 6.963 min
Delta R.T.: -0.011 min
Response: 2159662
Conc: 18.19 ug/ml



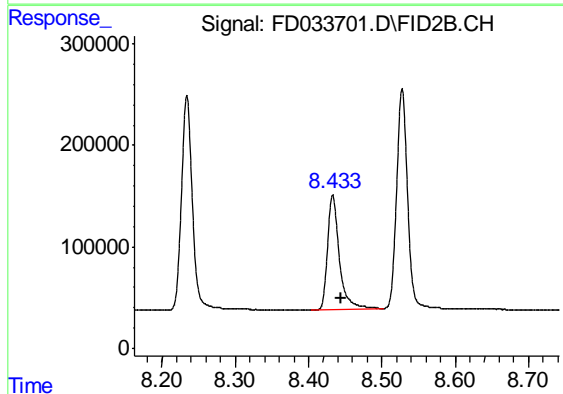
#4 2-Bromonaphthalene (SURR)

R.T.: 7.571 min
Delta R.T.: -0.011 min
Response: 1877006
Conc: 18.05 ug/ml



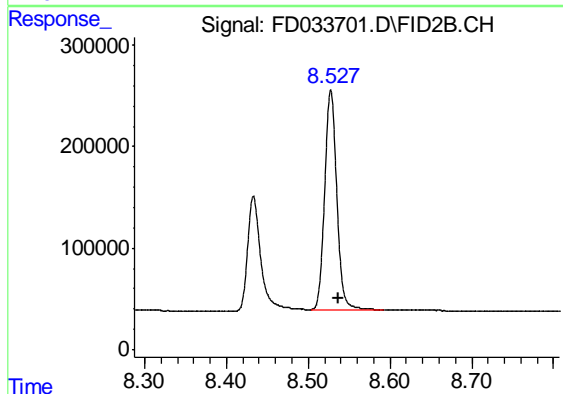
#5 Acenaphthylene (C15.06)

R.T.: 8.234 min
Delta R.T.: -0.010 min
Response: 2148037
Conc: 17.53 ug/ml



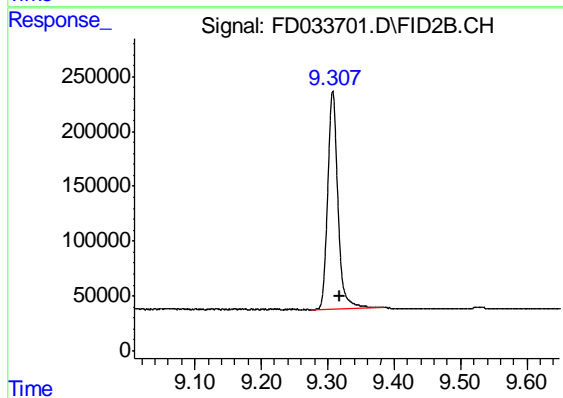
#6 2-Fluorobiphenyl (SURR)

R.T.: 8.433 min
Delta R.T.: -0.011 min
Response: 1254787
Conc: 18.15 ug/ml



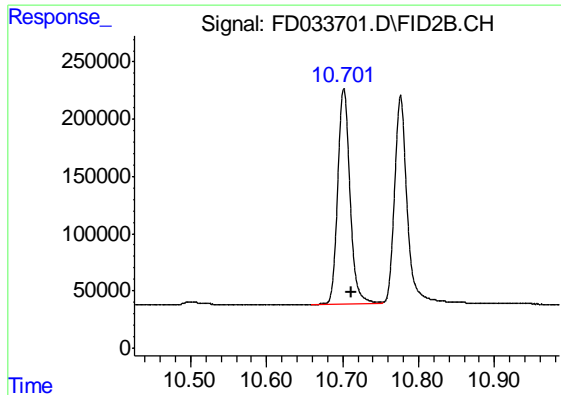
#7 Acenaphthene (C15.5)

R.T.: 8.528 min
Delta R.T.: -0.010 min
Response: 2220446
Conc: 17.19 ug/ml



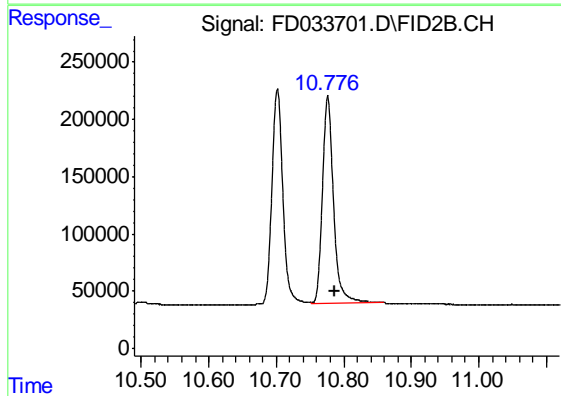
#8 Fluorene (C16.55)

R.T.: 9.308 min
Delta R.T.: -0.010 min
Response: 2112885
Conc: 17.79 ug/ml



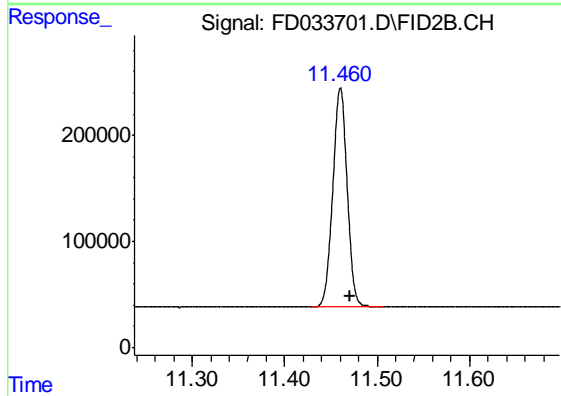
#9 Phenanthrene (C19.36)

R.T.: 10.702 min
Delta R.T.: -0.009 min
Response: 2120531
Conc: 17.29 ug/ml



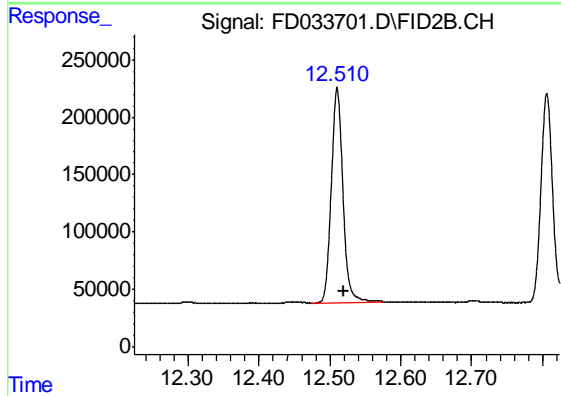
#10 Anthracene (C19.43)

R.T.: 10.776 min
Delta R.T.: -0.010 min
Response: 2076861
Conc: 17.06 ug/ml



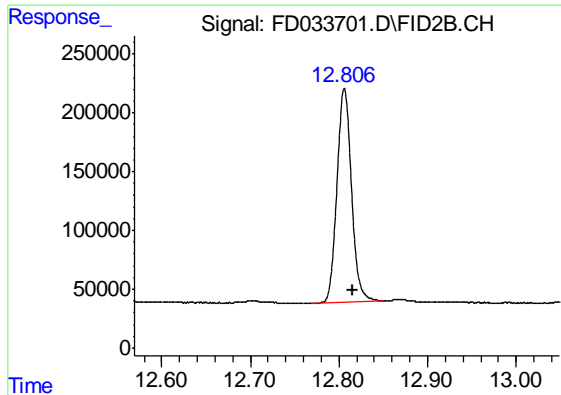
#11 ortho-Terphenyl (SURRE)

R.T.: 11.460 min
Delta R.T.: -0.010 min
Response: 2230316
Conc: 17.01 ug/ml



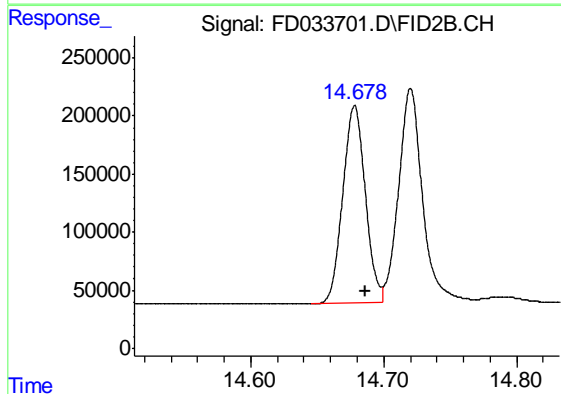
#12 Fluoranthene (C21.85)

R.T.: 12.510 min
Delta R.T.: -0.010 min
Response: 2119109
Conc: 16.81 ug/ml



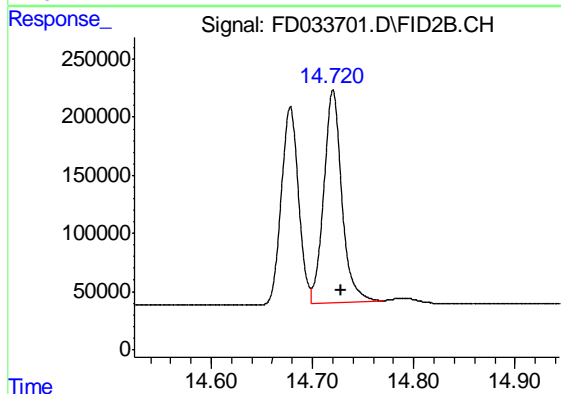
#13 Pyrene (C20.8)

R.T.: 12.806 min
Delta R.T.: -0.009 min
Response: 2065749
Conc: 16.95 ug/ml



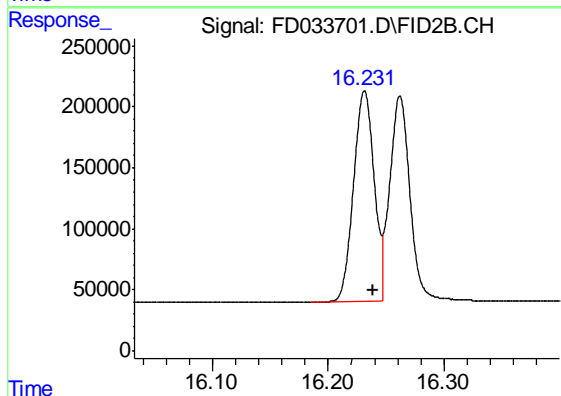
#14 Benzo[a]anthracene (C26.37)

R.T.: 14.678 min
Delta R.T.: -0.008 min
Response: 1988986
Conc: 17.66 ug/ml



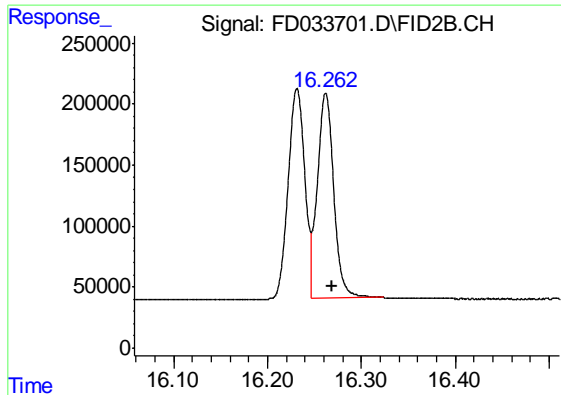
#15 Chrysene (C27.41)

R.T.: 14.720 min
Delta R.T.: -0.007 min
Response: 2252495
Conc: 17.33 ug/ml



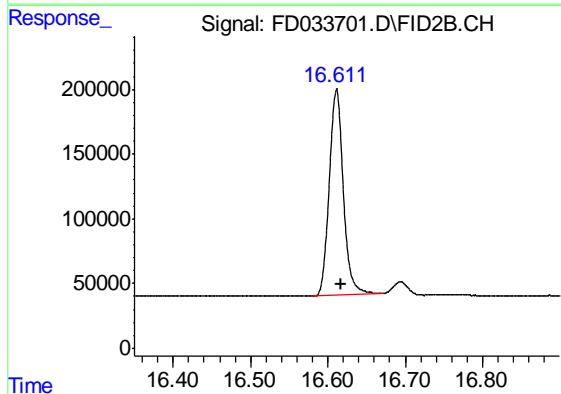
#16 benzo[b]fluoranthene (C30.41)

R.T.: 16.231 min
Delta R.T.: -0.007 min
Response: 2122429
Conc: 18.59 ug/ml



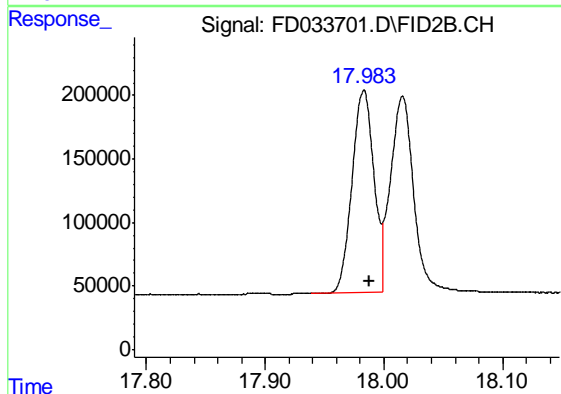
#17 Bnezo[k]fluoranthene (C30.14)

R.T.: 16.262 min
Delta R.T.: -0.007 min
Response: 2049956
Conc: 16.47 ug/ml



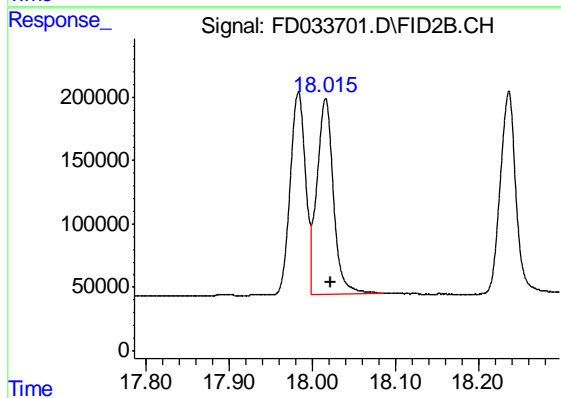
#18 Benzo[a]pyrene (C31.34)

R.T.: 16.611 min
Delta R.T.: -0.007 min
Response: 2015191
Conc: 17.19 ug/ml



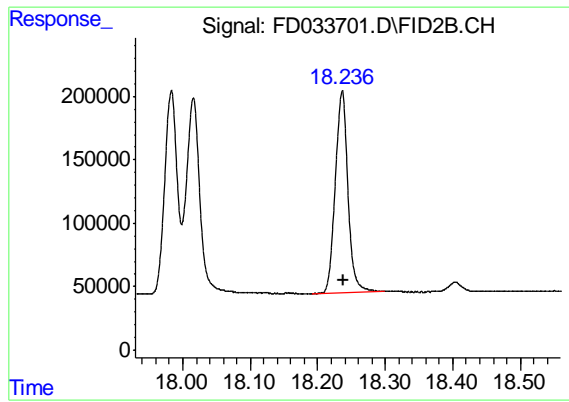
#19 Indeno[1,2,3-cd]pyrene (C35.01)

R.T.: 17.983 min
Delta R.T.: -0.004 min
Response: 2032849
Conc: 19.91 ug/ml



#20 Dibenz[a,h]anthracene (C30.36)

R.T.: 18.016 min
Delta R.T.: -0.006 min
Response: 2111403
Conc: 17.49 ug/ml



#21 Benzo[g,h,i]perylene (C34.01)

R.T.: 18.236 min
Delta R.T.: -0.001 min
Response: 2055443
Conc: 18.45 ug/ml