

Data Path : Z:\pestpcbsrv\HPCHEM1\FID_D\Data\FD061622AR\
 Data File : FD042949.D
 Signal(s) : FID2B.CH
 Acq On : 16 Jun 2022 19:07
 Operator : UA/NP
 Sample : 20 PPM AROMATIC HC STD
 Misc :
 ALS Vial : 52 Sample Multiplier: 1

Instrument :
 FID_D
 ClientSampleId :
 20 PPM AROMATIC HC STD

Manual Integrations
 APPROVED

Reviewed By :Yogesh Patel 06/17/2022
 Supervised By :Ankita Jodhani 06/17/2022

Integration File: sample.E
 Quant Time: Jun 17 01:50:12 2022
 Quant Method : Z:\pestpcbsrv\HPCHEM1\FID_D\methods\Aromatic EPH 052722.M
 Quant Title : GC Extractables
 QLast Update : Wed Jun 01 10:34:31 2022
 Response via : Initial Calibration
 Integrator: ChemStation 6890 Scale Mode: Large solvent peaks clipped

Volume Inj. : 1 µl
 Signal Phase : Rxi-1ms
 Signal Info : 20M x 0.18mm x 0.18µm

Compound	R.T.	Response	Conc Units

System Monitoring Compounds			
4) S 2-Bromonaphthalene (S...	7.653	3133270	20.504 ug/ml
Spiked Amount 50.000		Recovery =	41.01%
6) S 2-Fluorobiphenyl (SURR)	8.517	2052206	19.954 ug/ml
Spiked Amount 50.000 Range 0 - 131		Recovery =	39.91%
11) S ortho-Terphenyl (SURR)	11.567	3370219	18.985 ug/ml
Spiked Amount 50.000		Recovery =	37.97%
Target Compounds			
1) T 1,2,3-Trimethylbenzen...	4.447	3553860	21.226 ug/ml
2) T Naphthalene (C11.7)	5.988	3635956	21.030 ug/ml
3) T 2-Methylnaphthalene (...)	7.042	3281654	20.579 ug/ml
5) T Acenaphthylene (C15.06)	8.321	3411052	19.743 ug/ml
7) T Acenaphthene (C15.5)	8.617	3418607	19.868 ug/ml
8) T Flouorene (C16.55)	9.399	3295122	19.627 ug/ml
9) T Phenanthrene (C19.36)	10.798	3098638	18.843 ug/ml
10) T Anthracene (C19.43)	10.873	2882374	18.859 ug/ml
12) T Fluoranthene (C21.85)	12.613	2871163	18.224 ug/ml
13) T Pyrene (C20.8)	12.910	2830851	18.183 ug/ml
14) T Benzo[a]anthracene (C...	14.784	2737337	20.530 ug/ml
15) T Chrysene (C27.41)	14.826	2729167	20.657 ug/ml
16) T benzo[b]fluoranthene ...	16.337	2896251	21.741 ug/ml
17) T Bnezo[k]fluoranthene ...	16.368	2747332	22.181 ug/ml
18) T Benzo[a]pyrene (C31.34)	16.715	2779573	22.457 ug/ml
19) T Indeno[1,2,3-cd]pyren...	18.080	2599358	23.321 ug/ml
20) T Dibenz[a,h]anthracene...	18.123	2759320	24.806 ug/mlm
21) T Benzo[g,h,i]perylene ...	18.337	2756094	23.188 ug/ml

(f)=RT Delta > 1/2 Window

(m)=manual int.

Data Path : Z:\pestpcbsrv\HPCHEM1\FID_D\Data\FD061622AR\
 Data File : FD042949.D
 Signal(s) : FID2B.CH
 Acq On : 16 Jun 2022 19:07
 Operator : UA/NP
 Sample : 20 PPM AROMATIC HC STD
 Misc :
 ALS Vial : 52 Sample Multiplier: 1

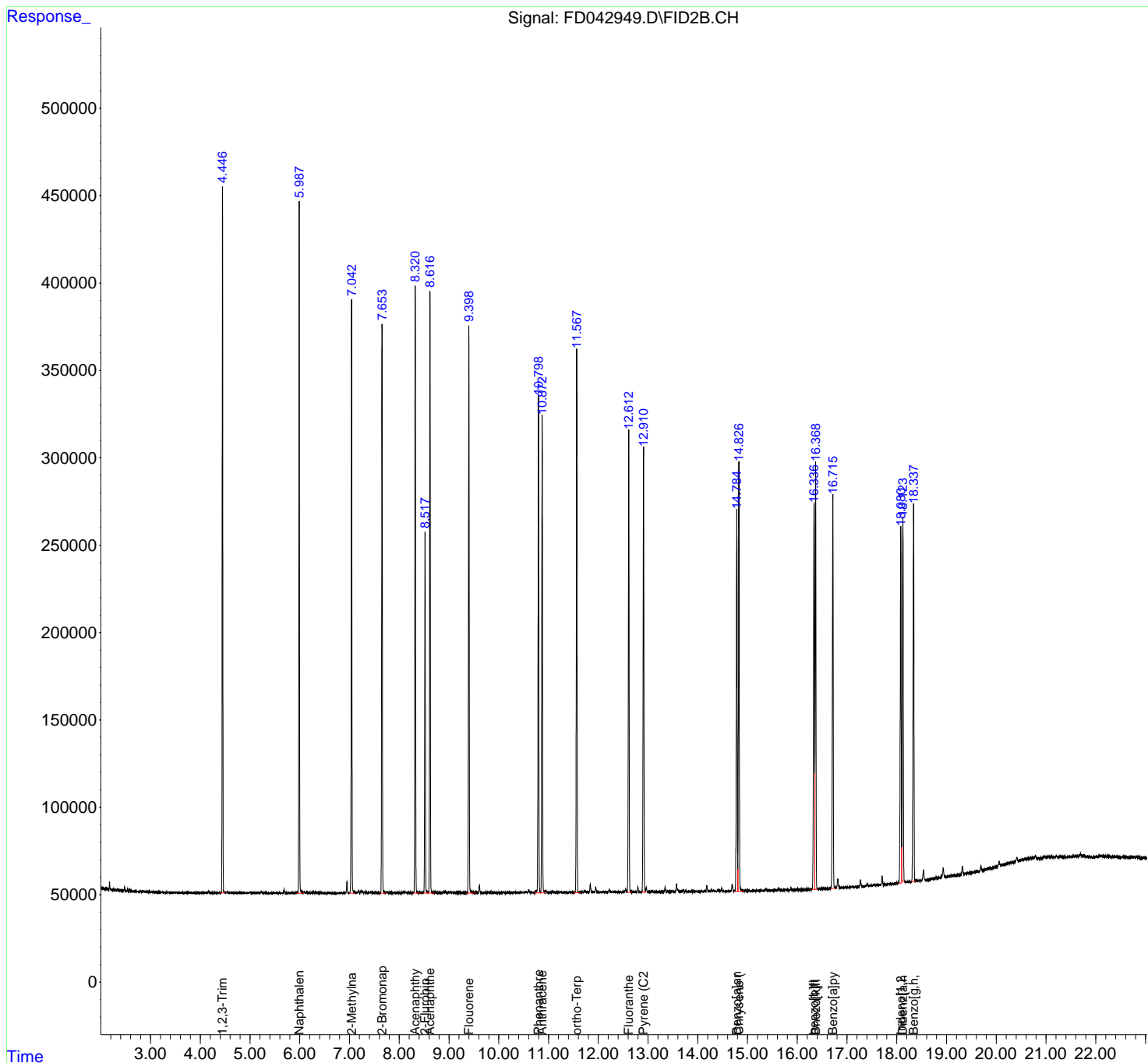
Instrument :
 FID_D
ClientSampleId :
 20 PPM AROMATIC HC STD

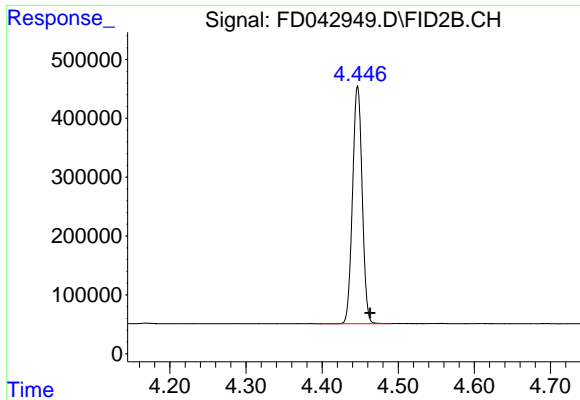
Manual Integrations
APPROVED

Reviewed By :Yogesh Patel 06/17/2022
 Supervised By :Ankita Jodhani 06/17/2022

Integration File: sample.E
 Quant Time: Jun 17 01:50:12 2022
 Quant Method : Z:\pestpcbsrv\HPCHEM1\FID_D\methods\Aromatic EPH 052722.M
 Quant Title : GC Extractables
 QLast Update : Wed Jun 01 10:34:31 2022
 Response via : Initial Calibration
 Integrator: ChemStation 6890 Scale Mode: Large solvent peaks clipped

Volume Inj. : 1 µl
 Signal Phase : Rxi-1ms
 Signal Info : 20M x 0.18mm x 0.18µm





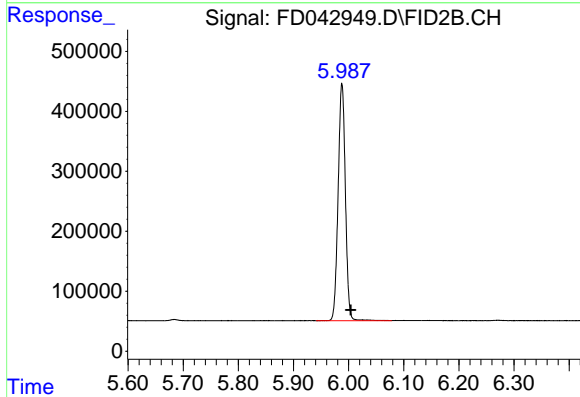
#1 1,2,3-Trimethylbenzene (C10.1)

R.T.: 4.447 min
 Delta R.T.: -0.016 min
 Response: 3553860
 Conc: 21.23 ug/ml

Instrument : FID_D
 ClientSampleId : 20 PPM AROMATIC HC STD

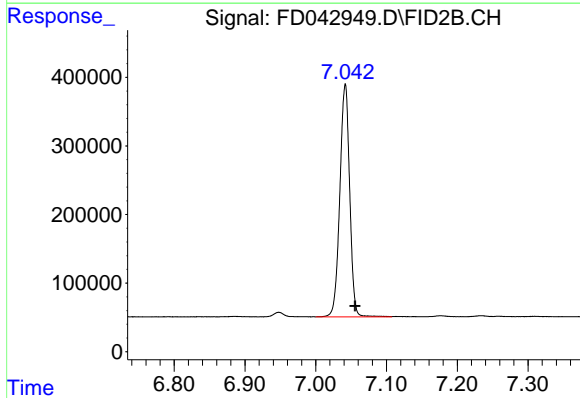
Manual Integrations
 APPROVED

Reviewed By :Yogesh Patel 06/17/2022
 Supervised By :Ankita Jodhani 06/17/2022



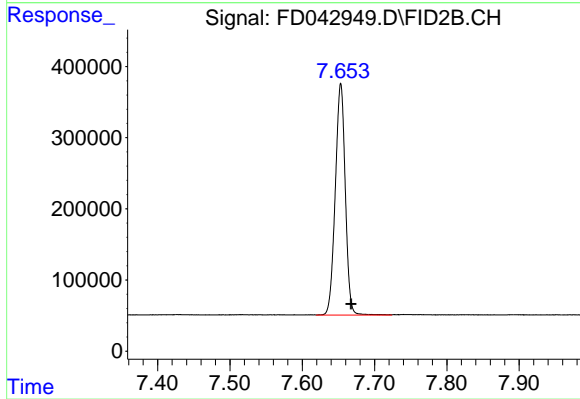
#2 Naphthalene (C11.7)

R.T.: 5.988 min
 Delta R.T.: -0.016 min
 Response: 3635956
 Conc: 21.03 ug/ml



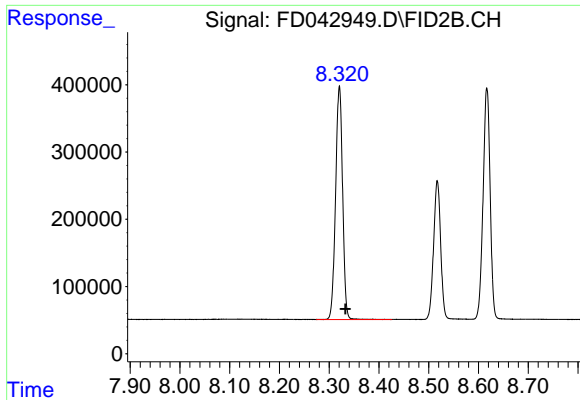
#3 2-Methylnaphthalene (C12.89)

R.T.: 7.042 min
 Delta R.T.: -0.014 min
 Response: 3281654
 Conc: 20.58 ug/ml



#4 2-Bromonaphthalene (SURR)

R.T.: 7.653 min
 Delta R.T.: -0.014 min
 Response: 3133270
 Conc: 20.50 ug/ml



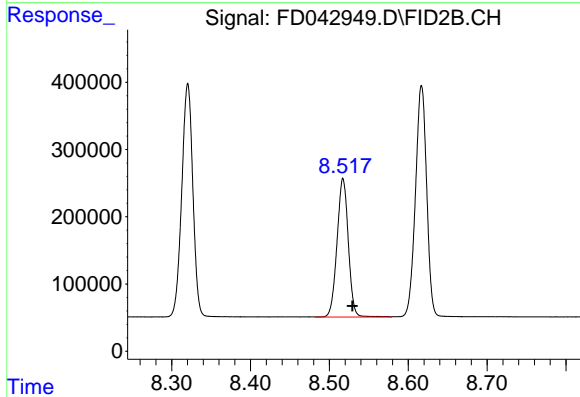
#5 Acenaphthylene (C15.06)

R.T.: 8.321 min
 Delta R.T.: -0.012 min
 Response: 3411052
 Conc: 19.74 ug/ml

Instrument : FID_D
 Client Sample Id : 20 PPM AROMATIC HC STD

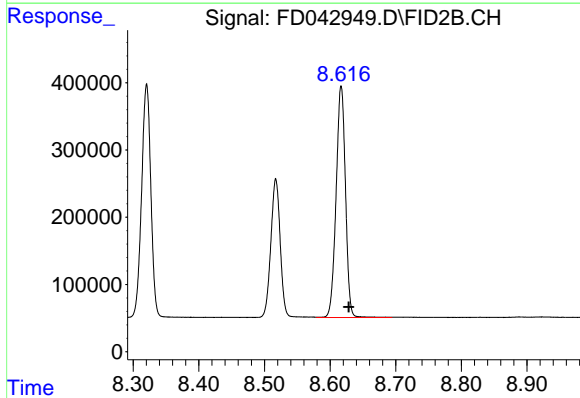
Manual Integrations
 APPROVED

Reviewed By :Yogesh Patel 06/17/2022
 Supervised By :Ankita Jodhani 06/17/2022



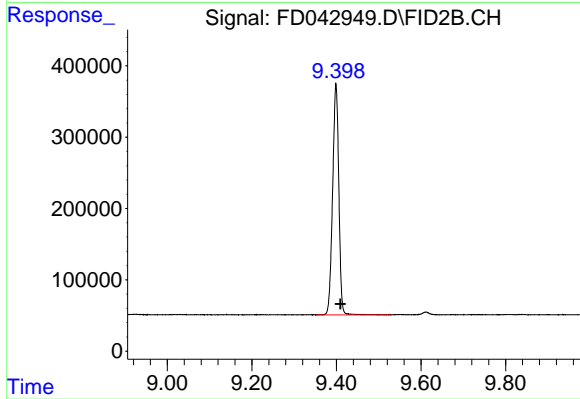
#6 2-Fluorobiphenyl (SURR)

R.T.: 8.517 min
 Delta R.T.: -0.012 min
 Response: 2052206
 Conc: 19.95 ug/ml



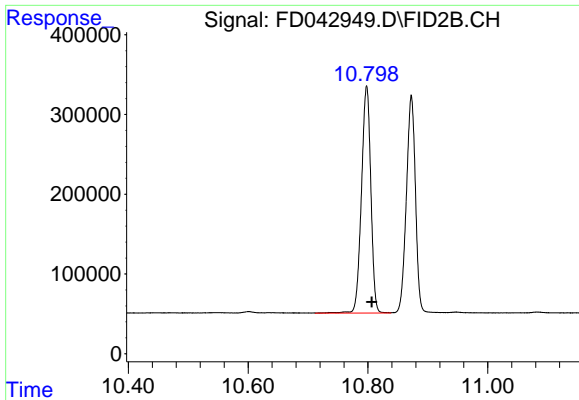
#7 Acenaphthene (C15.5)

R.T.: 8.617 min
 Delta R.T.: -0.012 min
 Response: 3418607
 Conc: 19.87 ug/ml



#8 Fluorene (C16.55)

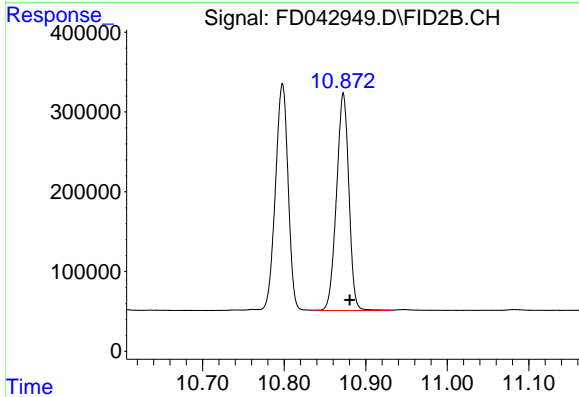
R.T.: 9.399 min
 Delta R.T.: -0.010 min
 Response: 3295122
 Conc: 19.63 ug/ml



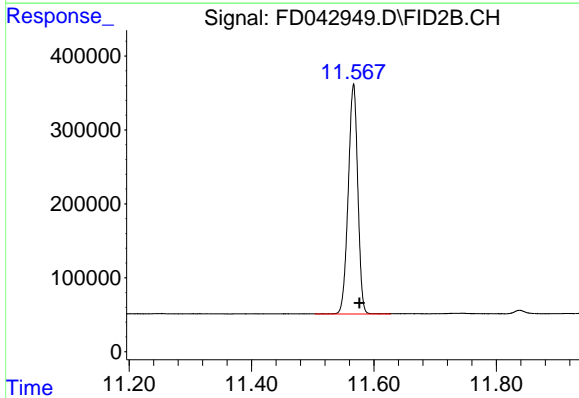
#9 Phenanthrene (C19.36)
 R.T.: 10.798 min
 Delta R.T.: -0.009 min
 Response: 3098638
 Conc: 18.84 ug/ml

Instrument : FID_D
 ClientSampleId : 20 PPM AROMATIC HC STD

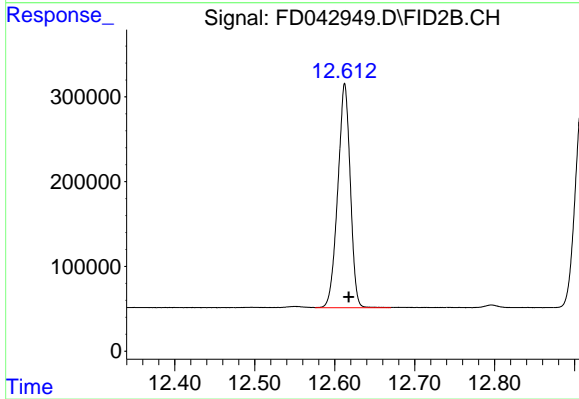
Manual Integrations
APPROVED
 Reviewed By :Yogesh Patel 06/17/2022
 Supervised By :Ankita Jodhani 06/17/2022



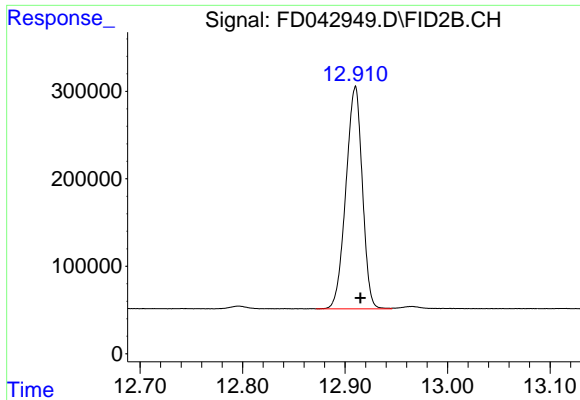
#10 Anthracene (C19.43)
 R.T.: 10.873 min
 Delta R.T.: -0.008 min
 Response: 2882374
 Conc: 18.86 ug/ml



#11 ortho-Terphenyl (SURR)
 R.T.: 11.567 min
 Delta R.T.: -0.010 min
 Response: 3370219
 Conc: 18.98 ug/ml



#12 Fluoranthene (C21.85)
 R.T.: 12.613 min
 Delta R.T.: -0.005 min
 Response: 2871163
 Conc: 18.22 ug/ml



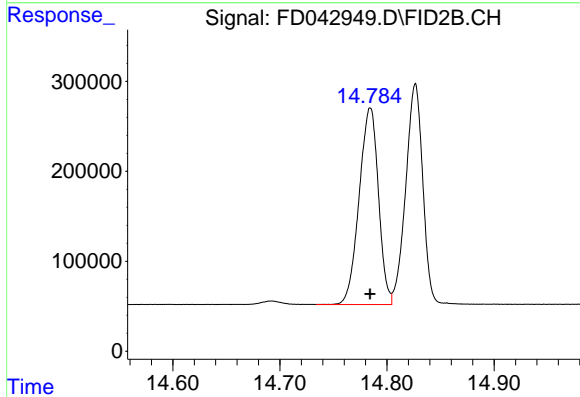
#13 Pyrene (C20.8)

R.T.: 12.910 min
 Delta R.T.: -0.005 min
 Response: 2830851
 Conc: 18.18 ug/ml

Instrument : FID_D
 ClientSampleId : 20 PPM AROMATIC HC STD

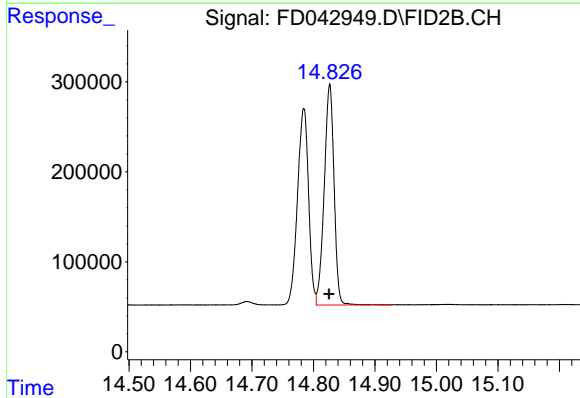
Manual Integrations
 APPROVED

Reviewed By :Yogesh Patel 06/17/2022
 Supervised By :Ankita Jodhani 06/17/2022



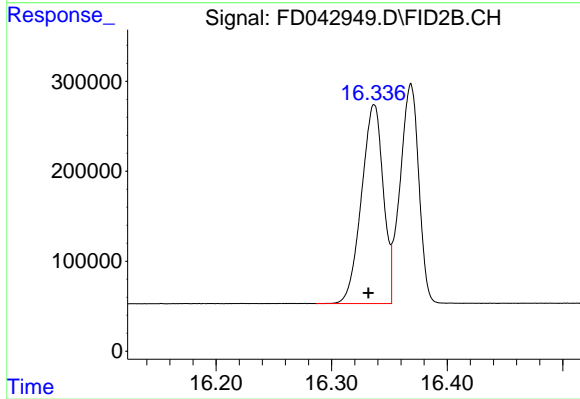
#14 Benzo[a]anthracene (C26.37)

R.T.: 14.784 min
 Delta R.T.: 0.000 min
 Response: 2737337
 Conc: 20.53 ug/ml



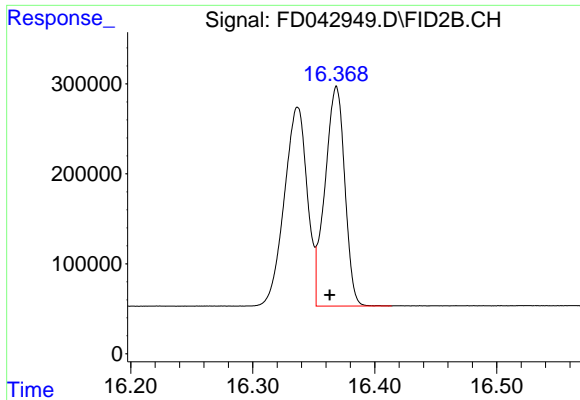
#15 Chrysene (C27.41)

R.T.: 14.826 min
 Delta R.T.: 0.001 min
 Response: 2729167
 Conc: 20.66 ug/ml



#16 benzo[b]fluoranthene (C30.41)

R.T.: 16.337 min
 Delta R.T.: 0.005 min
 Response: 2896251
 Conc: 21.74 ug/ml



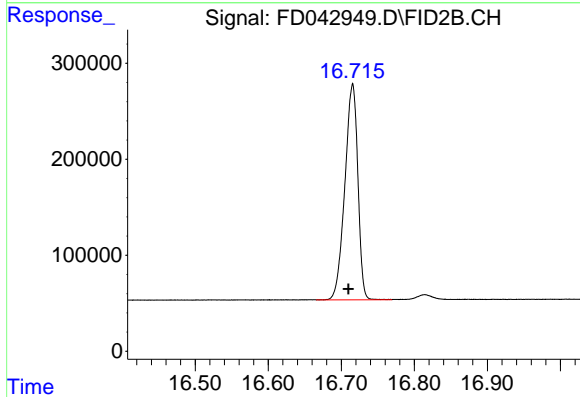
#17 Bnezo[k]fluoranthene (C30.14)

R.T.: 16.368 min
 Delta R.T.: 0.005 min
 Response: 2747332
 Conc: 22.18 ug/ml

Instrument : FID_D
 ClientSampleId : 20 PPM AROMATIC HC STD

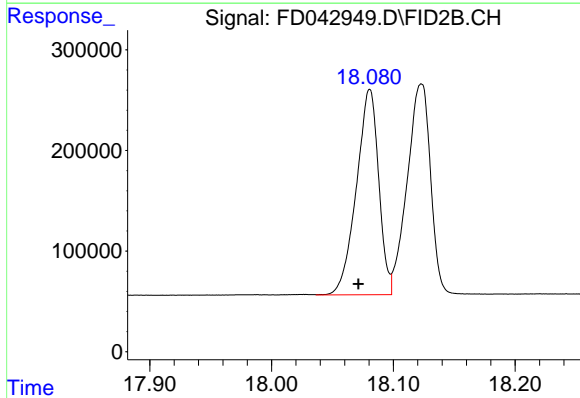
Manual Integrations
 APPROVED

Reviewed By :Yogesh Patel 06/17/2022
 Supervised By :Ankita Jodhani 06/17/2022



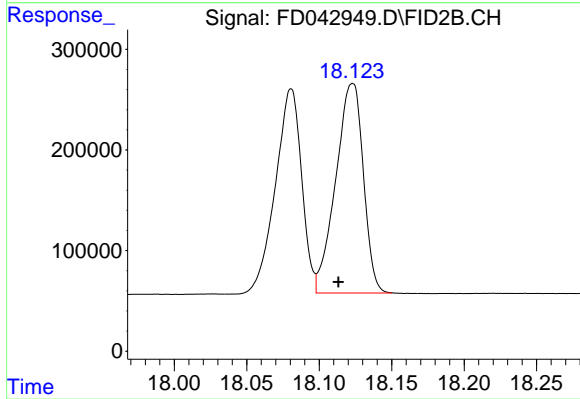
#18 Benzo[a]pyrene (C31.34)

R.T.: 16.715 min
 Delta R.T.: 0.006 min
 Response: 2779573
 Conc: 22.46 ug/ml



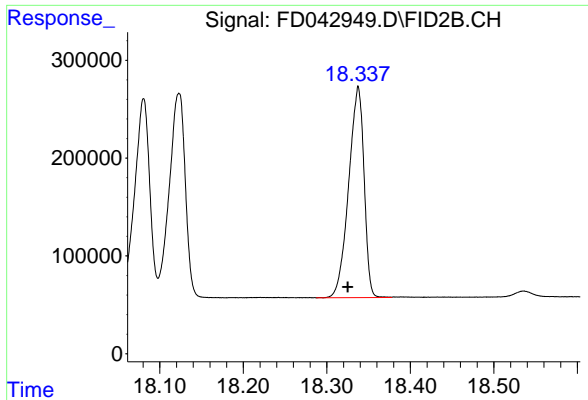
#19 Indeno[1,2,3-cd]pyrene (C35.01)

R.T.: 18.080 min
 Delta R.T.: 0.009 min
 Response: 2599358
 Conc: 23.32 ug/ml



#20 Dibenz[a,h]anthracene (C30.36)

R.T.: 18.123 min
 Delta R.T.: 0.009 min
 Response: 2759320
 Conc: 24.81 ug/ml m



#21 Benzo[g,h,i]perylene (C34.01)

R.T.: 18.337 min
Delta R.T.: 0.012 min
Response: 2756094
Conc: 23.19 ug/ml

Instrument :

FID_D

ClientSampleId :

20 PPM AROMATIC HC STD

Manual Integrations

APPROVED

Reviewed By :Yogesh Patel 06/17/2022
Supervised By :Ankita Jodhani 06/17/2022