

Data Path : Z:\pestpcbsrv\HPCHEM1\FID_D\Data\FD061721AL\
 Data File : FD037966.D
 Signal(s) : FID2B.CH
 Acq On : 17 Jun 2021 23:24
 Operator : DD\AJ
 Sample : M2748-09
 Misc :
 ALS Vial : 64 Sample Multiplier: 1

Instrument :
 FID_D
ClientSampleId :
 SB-8-AOC-2

Integration File: autoint1.e
 Quant Time: Jun 18 03:17:27 2021
 Quant Method : Z:\pestpcbsrv\HPCHEM1\FID_D\methods\Alaphatic EPH 061021.M
 Quant Title : GC Extractables
 QLast Update : Fri Jun 11 05:11:15 2021
 Response via : Initial Calibration
 Integrator: ChemStation 6890 Scale Mode: Large solvent peaks clipped

Volume Inj. : 1 ul
 Signal Phase : Rxi-1ms
 Signal Info : 20M x 0.18mm x 0.18um

Compound	R.T.	Response	Conc Units

System Monitoring Compounds			
9) S ortho-Terphenyl (SURR)	11.441	4060807	28.614 ug/ml
Spiked Amount	50.000	Recovery	= 57.23%
12) S 1-chlorooctadecane (S...	12.876	3179745	28.520 ug/ml
Spiked Amount	50.000	Recovery	= 57.04%
Target Compounds			

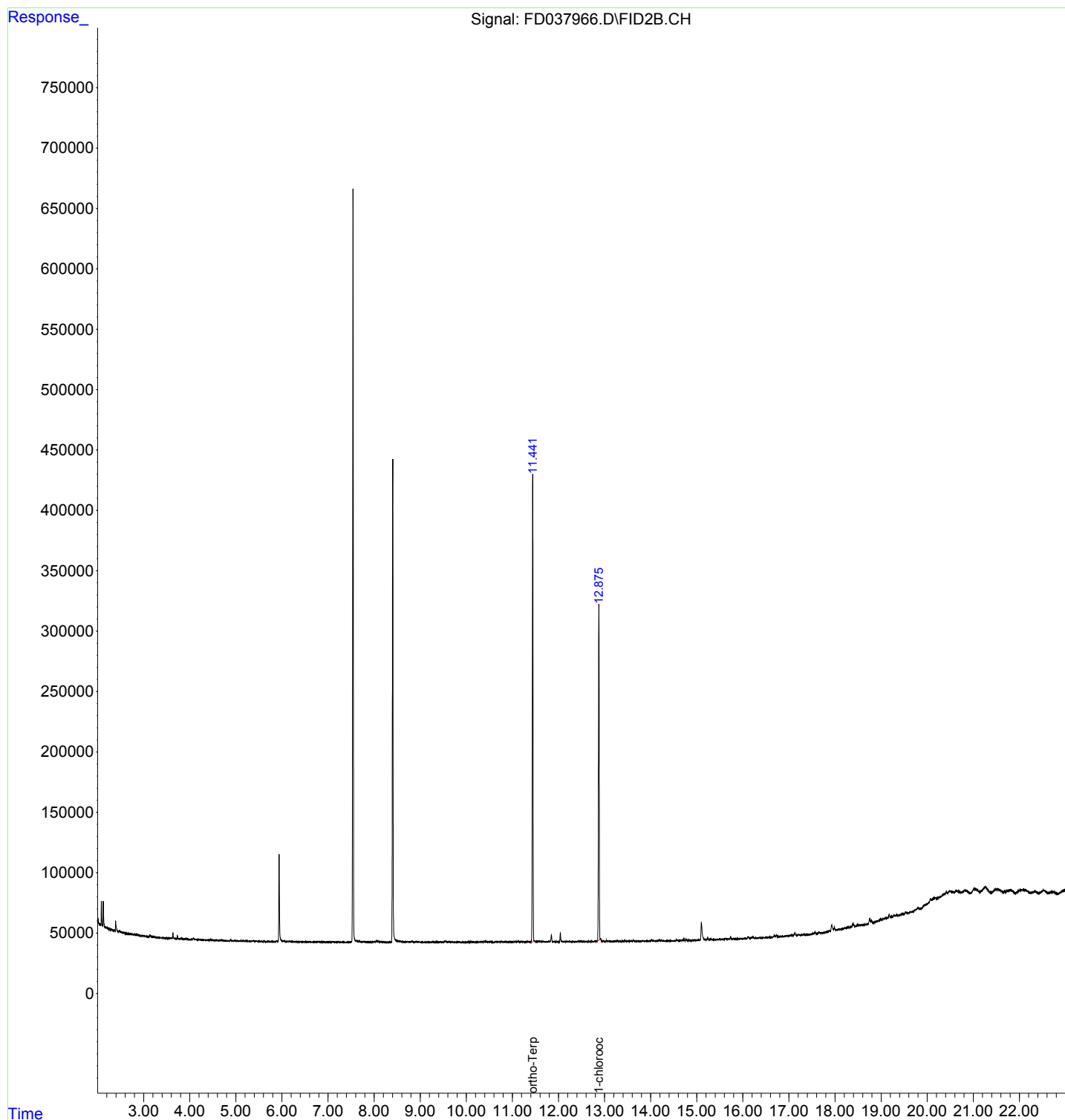
(f)=RT Delta > 1/2 Window (m)=manual int.

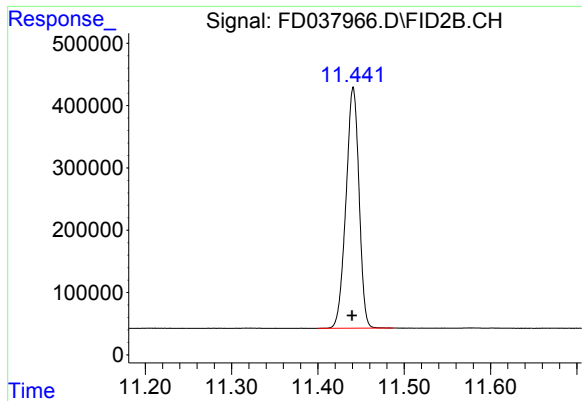
Data Path : Z:\pestpcbsrv\HPCHEM1\FID_D\Data\FD061721AL\
Data File : FD037966.D
Signal(s) : FID2B.CH
Acq On : 17 Jun 2021 23:24
Operator : DD\AJ
Sample : M2748-09
Misc :
ALS Vial : 64 Sample Multiplier: 1

Instrument :
FID_D
ClientSampled :
SB-8-AOC-2

Integration File: autoint1.e
Quant Time: Jun 18 03:17:27 2021
Quant Method : Z:\pestpcbsrv\HPCHEM1\FID_D\methods\Alaphatic EPH 061021.M
Quant Title : GC Extractables
QLast Update : Fri Jun 11 05:11:15 2021
Response via : Initial Calibration
Integrator: ChemStation 6890 Scale Mode: Large solvent peaks clipped

Volume Inj. : 1 ul
Signal Phase : Rxi-1ms
Signal Info : 20M x 0.18mm x 0.18um

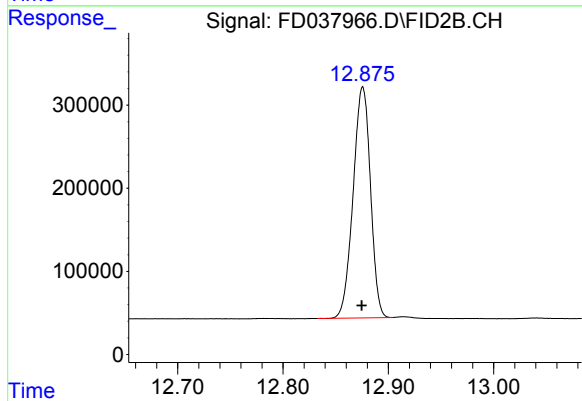




#9 ortho-Terphenyl (SURR)

R.T.: 11.441 min
Delta R.T.: 0.001 min
Response: 4060807
Conc: 28.61 ug/ml

Instrument :
FID_D
ClientSampled :
SB-8-AOC-2



#12 1-chlorooctadecane (SURR)

R.T.: 12.876 min
Delta R.T.: 0.001 min
Response: 3179745
Conc: 28.52 ug/ml