

Data Path : Z:\pestpcbsrv\HPCHEM1\FID_D\Data\FD061819AL\
 Data File : FD029462.D
 Signal(s) : FID2B.CH
 Acq On : 18 Jun 2019 19:15
 Operator : DD\AJ
 Sample : K3389-05
 Misc :
 ALS Vial : 57 Sample Multiplier: 1

Integration File: autoint1.e
 Quant Time: Jun 19 02:03:08 2019
 Quant Method : Z:\pestpcbsrv\HPCHEM1\FID_D\methods\Alaphatic EPH 061219.M
 Quant Title : GC Extractables
 QLast Update : Thu Jun 13 08:26:29 2019
 Response via : Initial Calibration
 Integrator: ChemStation 6890 Scale Mode: Large solvent peaks clipped

Volume Inj. : 1 ul
 Signal Phase : Rxi-1ms
 Signal Info : 20M x 0.18mm x 0.18um

Compound	R.T.	Response	Conc Units

System Monitoring Compounds			
12) S 1-chlorooctadecane (S...	13.053	3366959	31.114 ug/ml
Spiked Amount 50.000		Recovery =	62.23%
Target Compounds			
14) T n-Tetracosane (C24)	14.892	87320	0.707 ug/ml
15) T n-Hexacosane (C26)	15.906	140196	1.151 ug/ml
16) T n-Octacosane (C28)	16.848	221670	1.845 ug/ml
17) T n-Tricontane (C30)	17.728	248930	2.128 ug/ml
18) T n-Dotriacontane (C32)	18.555	191505	1.767 ug/ml

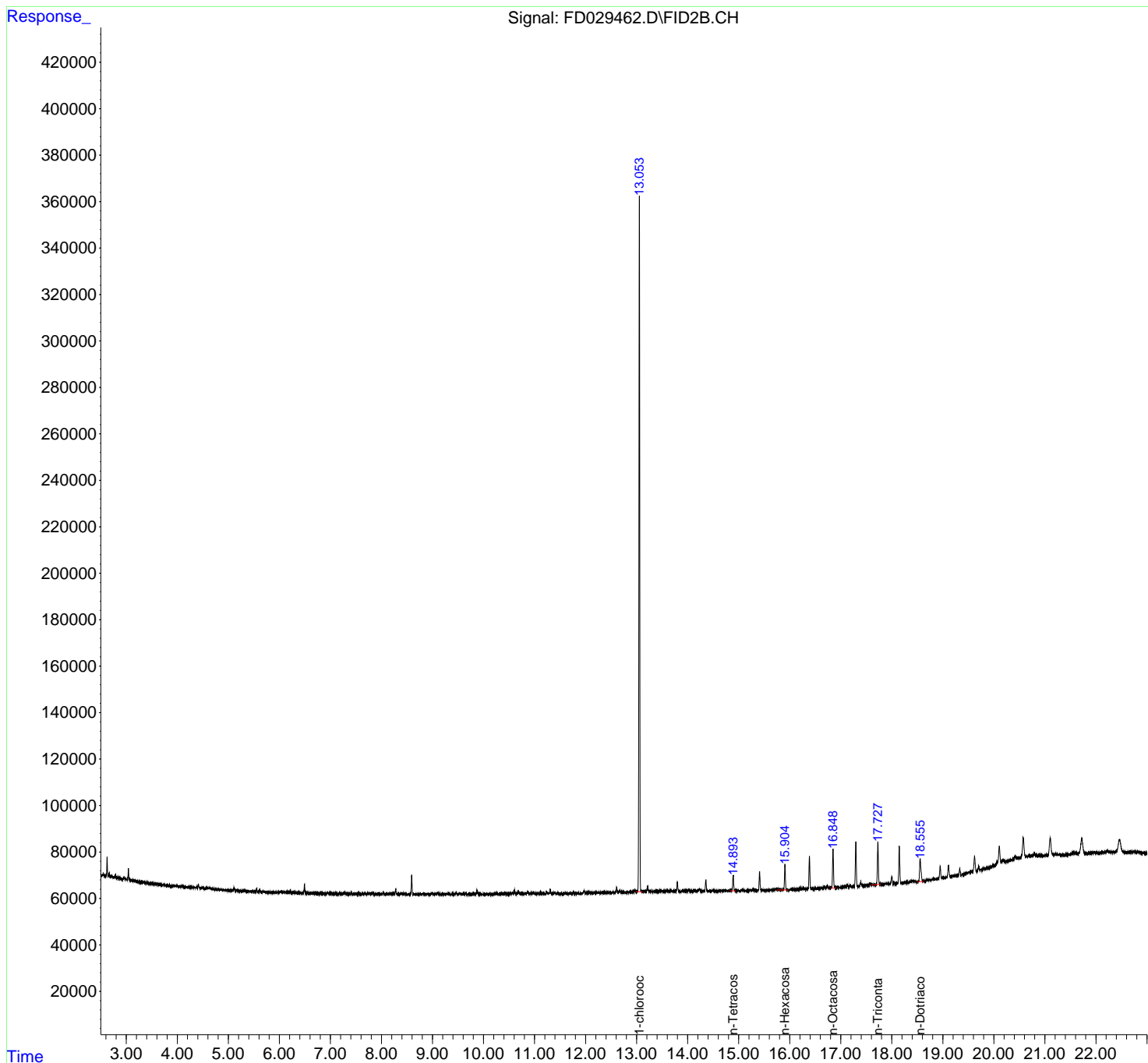
(f)=RT Delta > 1/2 Window

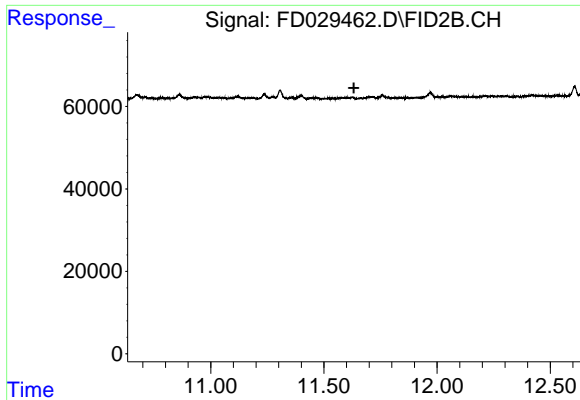
(m)=manual int.

Data Path : Z:\pestpcbsrv\HPCHEM1\FID_D\Data\FD061819AL\
 Data File : FD029462.D
 Signal(s) : FID2B.CH
 Acq On : 18 Jun 2019 19:15
 Operator : DD\AJ
 Sample : K3389-05
 Misc :
 ALS Vial : 57 Sample Multiplier: 1

Integration File: autoint1.e
 Quant Time: Jun 19 02:03:08 2019
 Quant Method : Z:\pestpcbsrv\HPCHEM1\FID_D\methods\Alaphatic EPH 061219.M
 Quant Title : GC Extractables
 QLast Update : Thu Jun 13 08:26:29 2019
 Response via : Initial Calibration
 Integrator: ChemStation 6890 Scale Mode: Large solvent peaks clipped

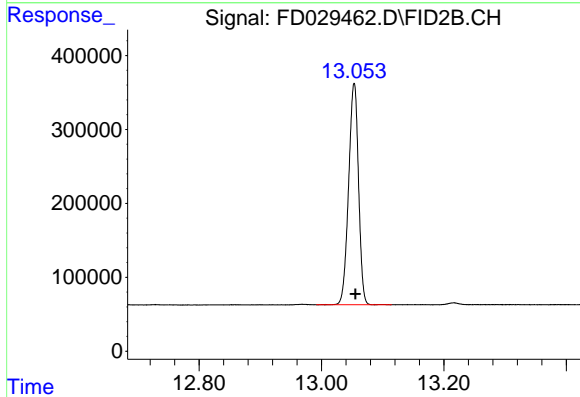
Volume Inj. : 1 ul
 Signal Phase : Rxi-1ms
 Signal Info : 20M x 0.18mm x 0.18um





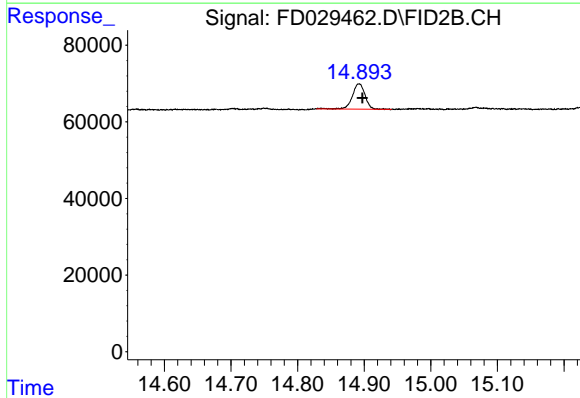
#9 ortho-Terphenyl (SURR)

R.T.: 0.000 min
 Exp R.T. : 11.633 min
 Response: 0
 Conc: N.D.



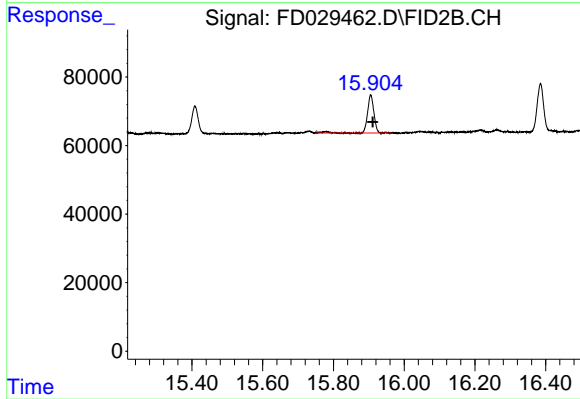
#12 1-chlorooctadecane (SURR)

R.T.: 13.053 min
 Delta R.T.: -0.002 min
 Response: 3366959
 Conc: 31.11 ug/ml



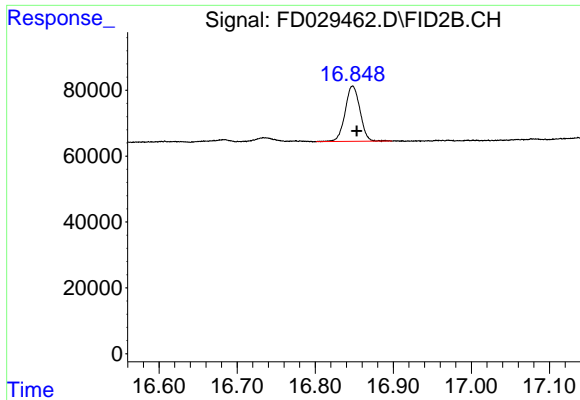
#14 n-Tetracosane (C24)

R.T.: 14.892 min
 Delta R.T.: -0.005 min
 Response: 87320
 Conc: 0.71 ug/ml



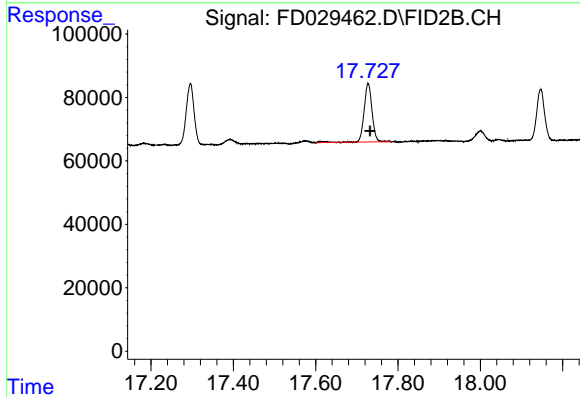
#15 n-Hexacosane (C26)

R.T.: 15.906 min
 Delta R.T.: -0.006 min
 Response: 140196
 Conc: 1.15 ug/ml



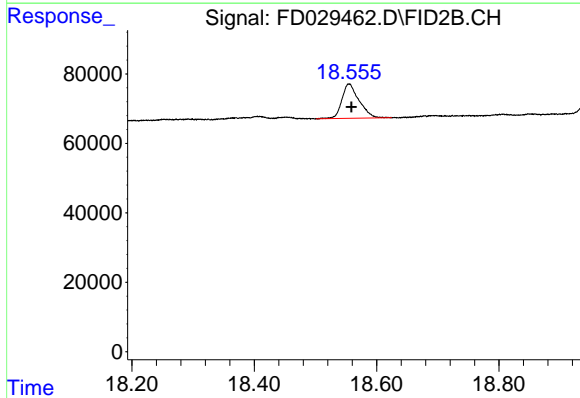
#16 n-Octacosane (C28)

R.T.: 16.848 min
Delta R.T.: -0.005 min
Response: 221670
Conc: 1.85 ug/ml



#17 n-Tricontane (C30)

R.T.: 17.728 min
Delta R.T.: -0.005 min
Response: 248930
Conc: 2.13 ug/ml



#18 n-Dotriacontane (C32)

R.T.: 18.555 min
Delta R.T.: -0.003 min
Response: 191505
Conc: 1.77 ug/ml