

Data Path : Z:\pestpcbsrv\HPCHEM1\FID_D\Data\FD061819AL\
 Data File : FD029481.D
 Signal(s) : FID2B.CH
 Acq On : 19 Jun 2019 7:01
 Operator : DD\AJ
 Sample : K3419-07
 Misc :
 ALS Vial : 74 Sample Multiplier: 1

Integration File: autoint1.e
 Quant Time: Jun 19 08:28:43 2019
 Quant Method : Z:\pestpcbsrv\HPCHEM1\FID_D\methods\Alaphatic EPH 061219.M
 Quant Title : GC Extractables
 QLast Update : Thu Jun 13 08:26:29 2019
 Response via : Initial Calibration
 Integrator: ChemStation 6890 Scale Mode: Large solvent peaks clipped

Volume Inj. : 1 ul
 Signal Phase : Rxi-1ms
 Signal Info : 20M x 0.18mm x 0.18um

Compound	R.T.	Response	Conc Units

System Monitoring Compounds			
9) S ortho-Terphenyl (SURR)	11.630	5461181	41.323 ug/ml
Spiked Amount	50.000	Recovery	= 82.65%
12) S 1-chlorooctadecane (S...	13.052	4041451	37.347 ug/ml
Spiked Amount	50.000	Recovery	= 74.69%
Target Compounds			
6) T n-Tetradecane (C14)	8.341f	496099	4.175 ug/ml
10) T n-Eicosane (C20)	12.670f	75545	0.614 ug/ml
16) T n-Octacosane (C28)	16.847	134284	1.118 ug/ml
17) T n-Tricontane (C30)	17.728	194679	1.665 ug/ml
18) T n-Dotriacontane (C32)	18.554	171726	1.585 ug/ml

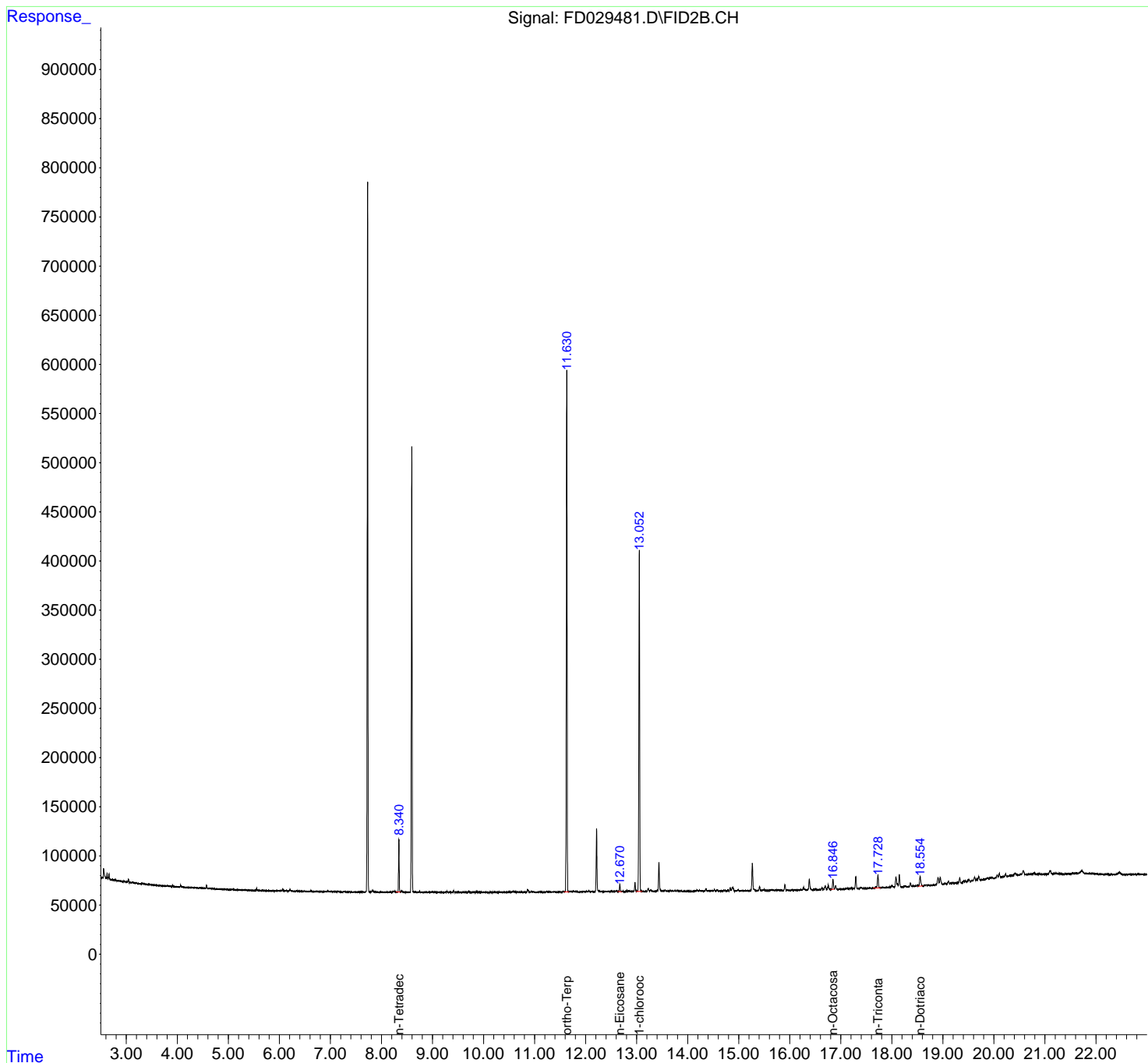
(f)=RT Delta > 1/2 Window

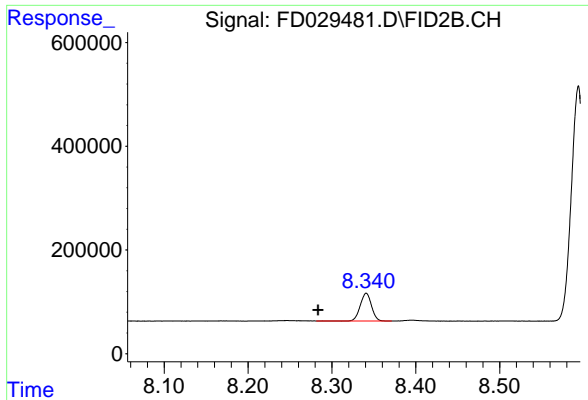
(m)=manual int.

Data Path : Z:\pestpcbsrv\HPCHEM1\FID_D\Data\FD061819AL\
Data File : FD029481.D
Signal(s) : FID2B.CH
Acq On : 19 Jun 2019 7:01
Operator : DD\AJ
Sample : K3419-07
Misc :
ALS Vial : 74 Sample Multiplier: 1

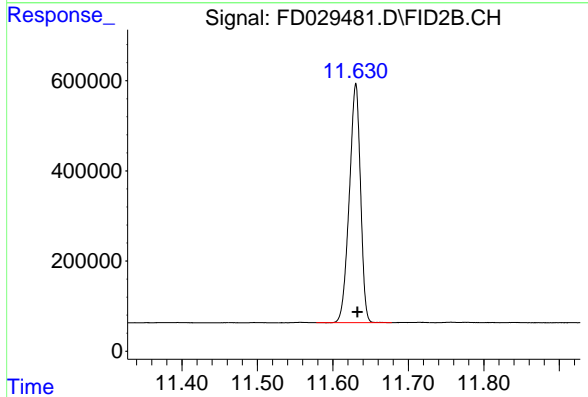
Integration File: autoint1.e
Quant Time: Jun 19 08:28:43 2019
Quant Method : Z:\pestpcbsrv\HPCHEM1\FID_D\methods\Alaphatic EPH 061219.M
Quant Title : GC Extractables
QLast Update : Thu Jun 13 08:26:29 2019
Response via : Initial Calibration
Integrator: ChemStation 6890 Scale Mode: Large solvent peaks clipped

Volume Inj. : 1 ul
Signal Phase : Rxi-1ms
Signal Info : 20M x 0.18mm x 0.18um

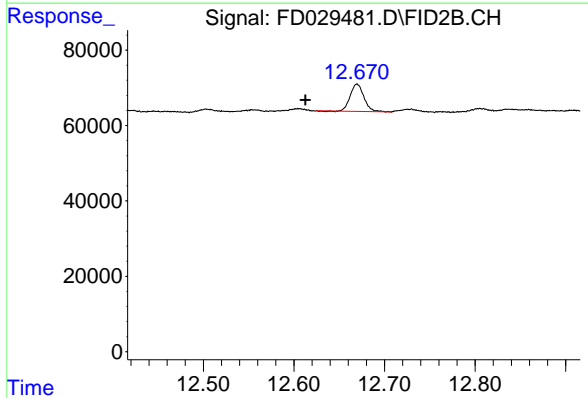




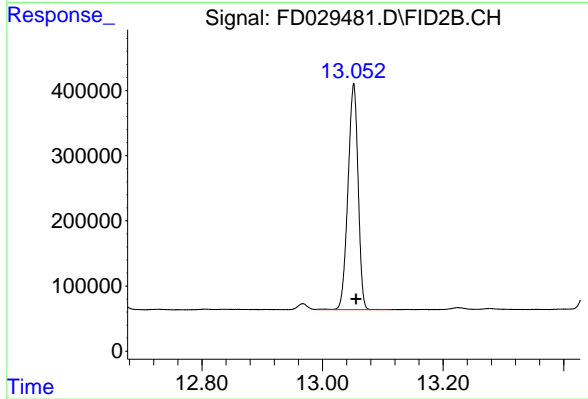
#6 n-Tetradecane (C14)
R.T.: 8.341 min
Delta R.T.: 0.058 min
Response: 496099
Conc: 4.17 ug/ml



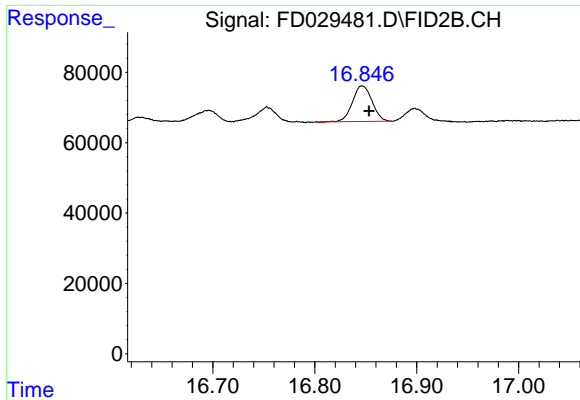
#9 ortho-Terphenyl (SURR)
R.T.: 11.630 min
Delta R.T.: -0.002 min
Response: 5461181
Conc: 41.32 ug/ml



#10 n-Eicosane (C20)
R.T.: 12.670 min
Delta R.T.: 0.057 min
Response: 75545
Conc: 0.61 ug/ml

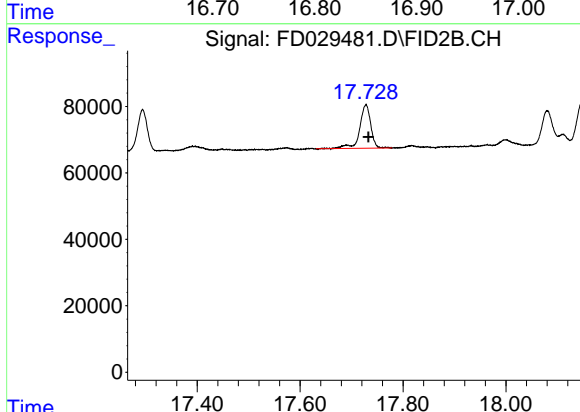


#12 1-chlorooctadecane (SURR)
R.T.: 13.052 min
Delta R.T.: -0.004 min
Response: 4041451
Conc: 37.35 ug/ml



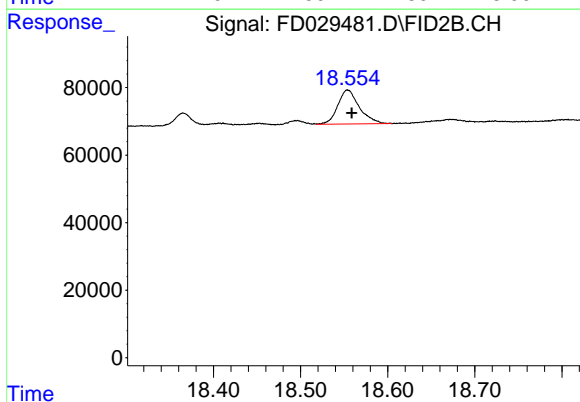
#16 n-Octacosane (C28)

R.T.: 16.847 min
Delta R.T.: -0.007 min
Response: 134284
Conc: 1.12 ug/ml



#17 n-Tricontane (C30)

R.T.: 17.728 min
Delta R.T.: -0.005 min
Response: 194679
Conc: 1.66 ug/ml



#18 n-Dotriacontane (C32)

R.T.: 18.554 min
Delta R.T.: -0.004 min
Response: 171726
Conc: 1.58 ug/ml