

Data Path : Z:\pestpcbsrv\HPCHEM1\FID_D\Data\FD062122AL\
 Data File : FD042999.D
 Signal(s) : FID2B.CH
 Acq On : 21 Jun 2022 19:02
 Operator : UA/NP
 Sample : N3412-02
 Misc :
 ALS Vial : 61 Sample Multiplier: 1

Integration File: autoint1.e
 Quant Time: Jun 22 01:16:54 2022
 Quant Method : Z:\pestpcbsrv\HPCHEM1\FID_D\methods\Aliphatic EPH 052722.M
 Quant Title : GC Extractables
 QLast Update : Sat May 28 07:55:57 2022
 Response via : Initial Calibration
 Integrator: ChemStation 6890 Scale Mode: Large solvent peaks clipped

Volume Inj. : 1 ul
 Signal Phase : Rxi-1ms
 Signal Info : 20M x 0.18mm x 0.18um

Compound	R.T.	Response	Conc Units

System Monitoring Compounds			
9) S ortho-Terphenyl (SURR)	11.566	5479179	32.991 ug/ml
Spiked Amount	50.000	Recovery	= 65.98%
12) S 1-chlorooctadecane (S...	12.999	22670348	173.586 ug/ml
Spiked Amount	50.000	Recovery	= 347.17%

Target Compounds

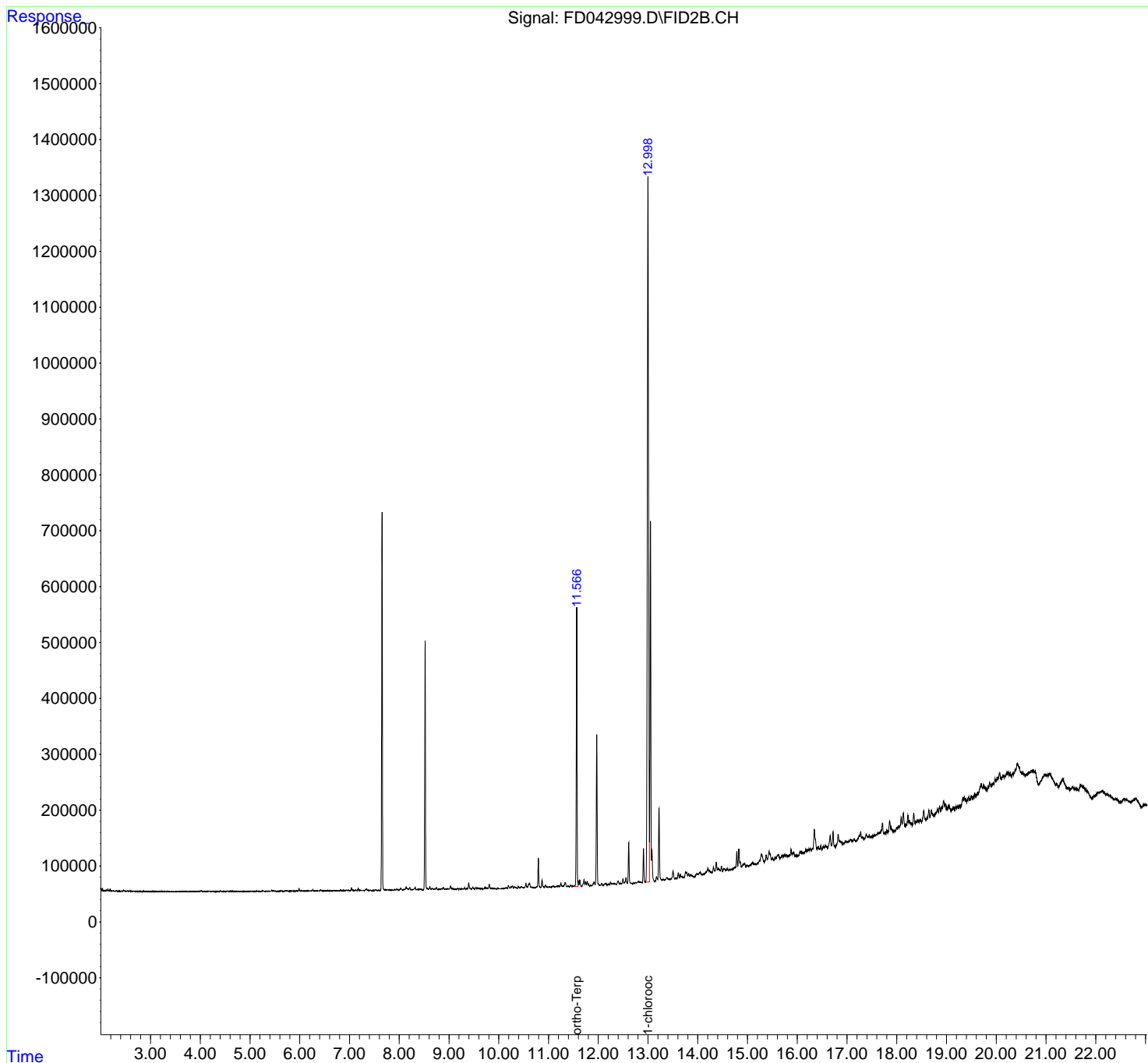
(f)=RT Delta > 1/2 Window

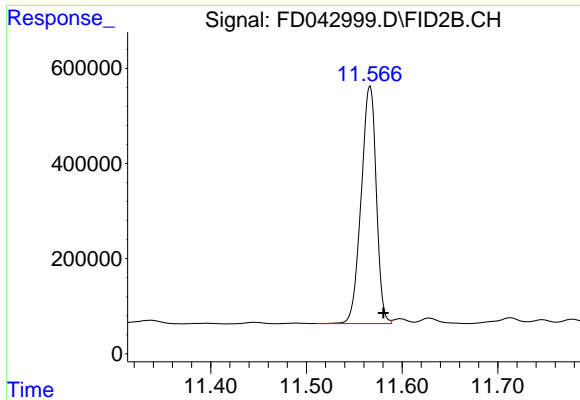
(m)=manual int.

Data Path : Z:\pestpcbsrv\HPCHEM1\FID_D\Data\FD062122AL\
Data File : FD042999.D
Signal(s) : FID2B.CH
Acq On : 21 Jun 2022 19:02
Operator : UA/NP
Sample : N3412-02
Misc :
ALS Vial : 61 Sample Multiplier: 1

Integration File: autoint1.e
Quant Time: Jun 22 01:16:54 2022
Quant Method : Z:\pestpcbsrv\HPCHEM1\FID_D\methods\Aliphatic EPH 052722.M
Quant Title : GC Extractables
QLast Update : Sat May 28 07:55:57 2022
Response via : Initial Calibration
Integrator: ChemStation 6890 Scale Mode: Large solvent peaks clipped

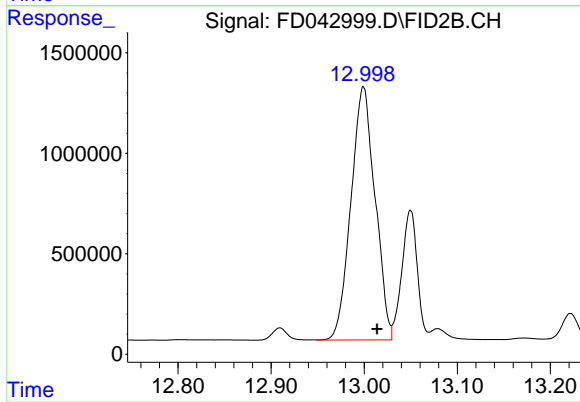
Volume Inj. : 1 ul
Signal Phase : Rxi-1ms
Signal Info : 20M x 0.18mm x 0.18um





#9 ortho-Terphenyl (SURR)

R.T.: 11.566 min
Delta R.T.: -0.014 min
Response: 5479179
Conc: 32.99 ug/ml



#12 1-chlorooctadecane (SURR)

R.T.: 12.999 min
Delta R.T.: -0.015 min
Response: 22670348
Conc: 173.59 ug/ml