

Data Path : Z:\pestpcbsrv\HPCHEM1\FID_D\Data\FD062623AR\
 Data File : FD045979.D
 Signal(s) : FID2B.ch
 Acq On : 27 Jun 2023 01:36
 Operator : YP/AJ
 Sample : 03357-25
 Misc :
 ALS Vial : 27 Sample Multiplier: 1

Instrument :
 FID_D
 ClientSampleId :
 WC-SCAN-EPH-05

Integration File: autoint1.e
 Quant Time: Jun 27 02:48:40 2023
 Quant Method : Z:\pestpcbsrv\HPCHEM1\FID_D\methods\Aromatic EPH 062423.M
 Quant Title : GC Extractables
 QLast Update : Sun Jun 25 04:38:13 2023
 Response via : Initial Calibration
 Integrator: ChemStation

Volume Inj. : 1 µl
 Signal Phase : Rxi-1ms
 Signal Info : 20M x 0.18mm x 0.18µm

Compound	R.T.	Response	Conc Units

System Monitoring Compounds			
4) S 2-Bromonaphthalene (S...	7.521	10210205	47.379 ug/ml
Spiked Amount 50.000		Recovery =	94.76%
6) S 2-Fluorobiphenyl (SURR)	8.376	6344381	45.840 ug/ml
Spiked Amount 50.000 Range 0 - 131		Recovery =	91.68%
11) S ortho-Terphenyl (SURR)	11.413	6321688	24.936 ug/ml
Spiked Amount 50.000		Recovery =	49.87%

Target Compounds

(f)=RT Delta > 1/2 Window

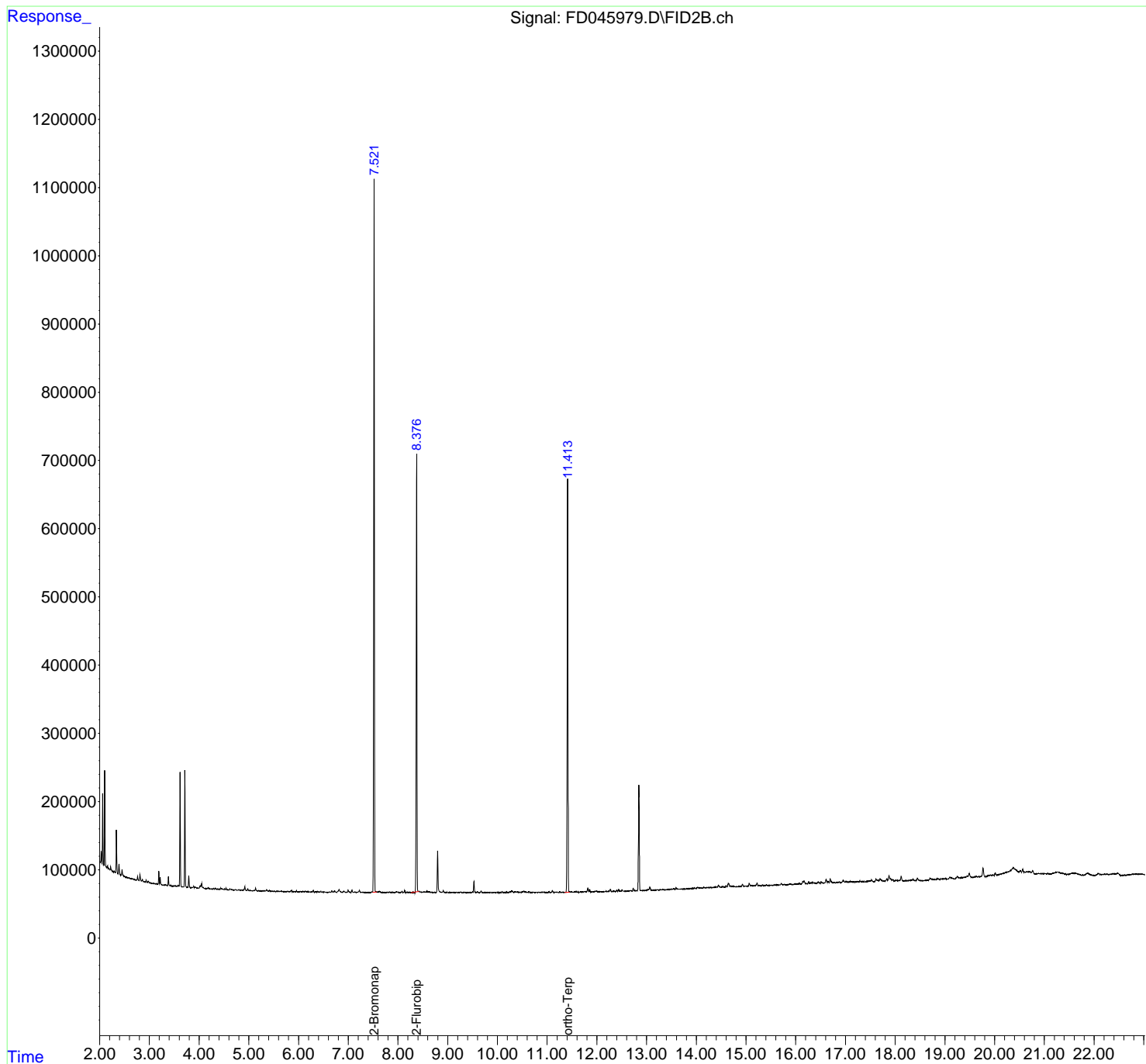
(m)=manual int.

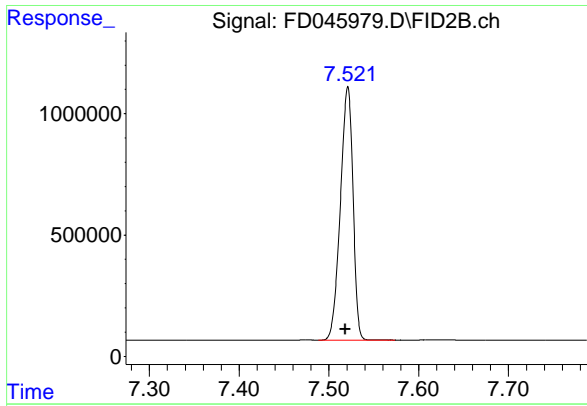
Data Path : Z:\pestpcbsrv\HPCHEM1\FID_D\Data\FD062623AR\
 Data File : FD045979.D
 Signal(s) : FID2B.ch
 Acq On : 27 Jun 2023 01:36
 Operator : YP/AJ
 Sample : 03357-25
 Misc :
 ALS Vial : 27 Sample Multiplier: 1

Instrument :
 FID_D
 ClientSampleId :
 WC-SCAN-EPH-05

Integration File: autoint1.e
 Quant Time: Jun 27 02:48:40 2023
 Quant Method : Z:\pestpcbsrv\HPCHEM1\FID_D\methods\Aromatic EPH 062423.M
 Quant Title : GC Extractables
 QLast Update : Sun Jun 25 04:38:13 2023
 Response via : Initial Calibration
 Integrator: ChemStation

Volume Inj. : 1 µl
 Signal Phase : Rxi-1ms
 Signal Info : 20M x 0.18mm x 0.18µm

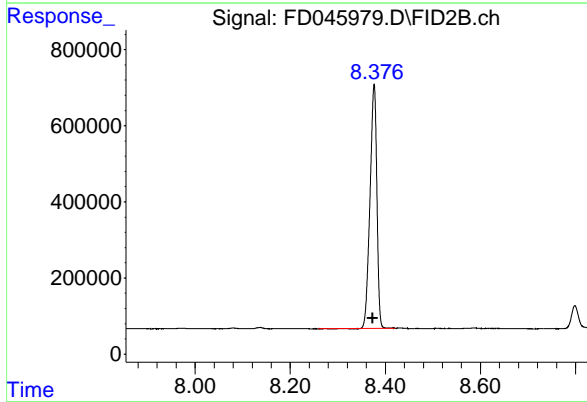




#4 2-Bromonaphthalene (SURR)

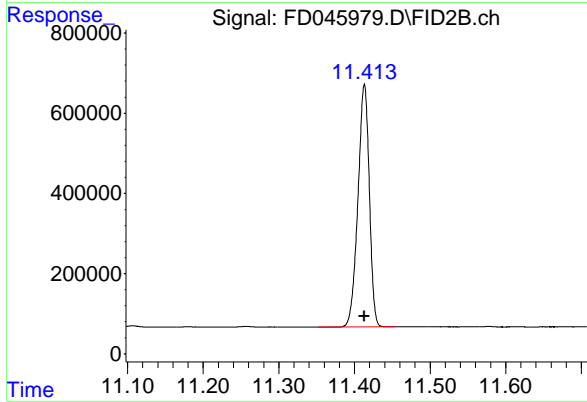
R.T.: 7.521 min
Delta R.T.: 0.002 min
Response: 10210205
Conc: 47.38 ug/ml

Instrument :
FID_D
ClientSampleId :
WC-SCAN-EPH-05



#6 2-Fluorobiphenyl (SURR)

R.T.: 8.376 min
Delta R.T.: 0.003 min
Response: 6344381
Conc: 45.84 ug/ml



#11 ortho-Terphenyl (SURR)

R.T.: 11.413 min
Delta R.T.: 0.000 min
Response: 6321688
Conc: 24.94 ug/ml