

Data Path : Z:\pestpcbsrv\HPCHEM1\FID_D\Data\FD062722AR\
 Data File : FD043073.D
 Signal(s) : FID2B.ch
 Acq On : 28 Jun 2022 02:07
 Operator : YP/AJ
 Sample : N3494-04
 Misc :
 ALS Vial : 67 Sample Multiplier: 1

Instrument :
 FID_D
ClientSampleId :
 SP-EXC-3-GR

Manual Integrations
APPROVED
 Reviewed By :Yogesh Patel 06/28/2022
 Supervised By :Ankita Jodhani 06/28/2022

Integration File: autoint1.e
 Quant Time: Jun 28 03:06:22 2022
 Quant Method : Z:\pestpcbsrv\HPCHEM1\FID_D\methods\Aromatic EPH 062422.M
 Quant Title : GC Extractables
 QLast Update : Sat Jun 25 04:47:50 2022
 Response via : Initial Calibration
 Integrator: ChemStation

Volume Inj. : 1 µl
 Signal Phase : Rxi-1ms
 Signal Info : 20M x 0.18mm x 0.18µm

Compound	R.T.	Response	Conc Units
System Monitoring Compounds			
4) S 2-Bromonaphthalene (S...	7.633	4822538	31.232 ug/ml
Spiked Amount	50.000	Recovery	= 62.46%
6) S 2-Fluorobiphenyl (SURR)	8.497	3023346	28.664 ug/ml
Spiked Amount	50.000	Recovery	= 57.33%
11) S ortho-Terphenyl (SURR)	11.540	3957991	21.777 ug/mlm
Spiked Amount	50.000	Recovery	= 43.55%

Target Compounds

(f)=RT Delta > 1/2 Window

(m)=manual int.

Data Path : Z:\pestpcbsrv\HPCHEM1\FID_D\Data\FD062722AR\
 Data File : FD043073.D
 Signal(s) : FID2B.ch
 Acq On : 28 Jun 2022 02:07
 Operator : YP/AJ
 Sample : N3494-04
 Misc :
 ALS Vial : 67 Sample Multiplier: 1

Instrument :

FID_D

ClientSampleId :

SP-EXC-3-GR

Manual Integrations

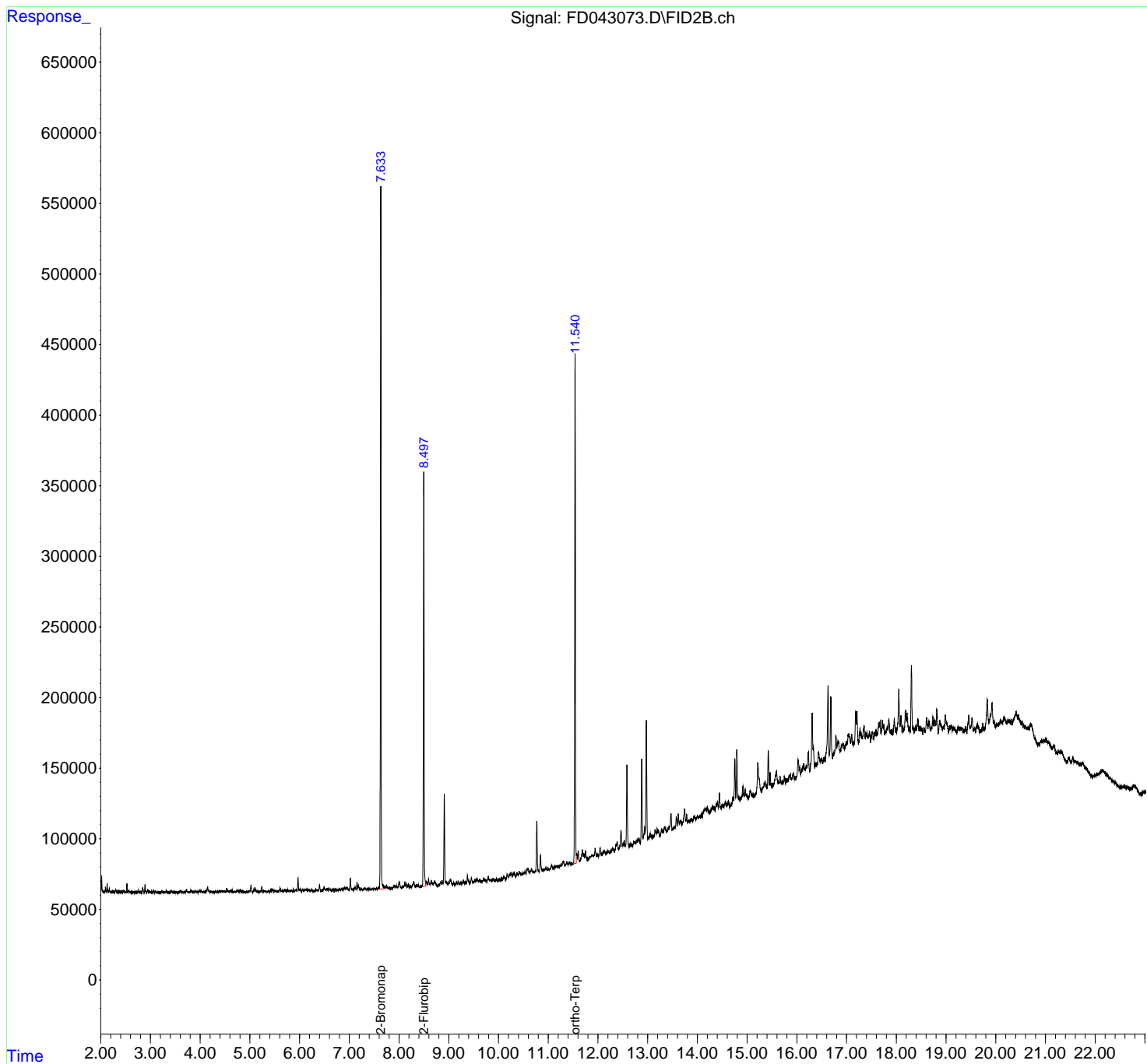
APPROVED

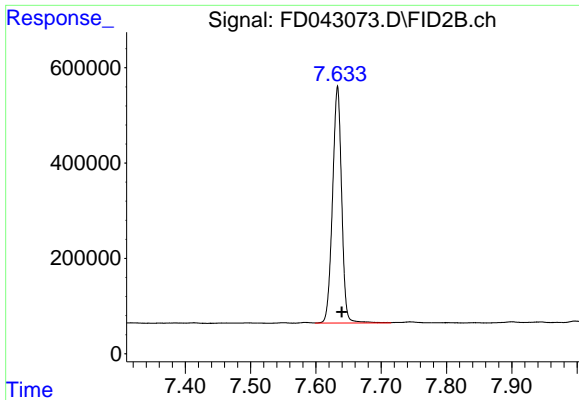
Reviewed By :Yogesh Patel 06/28/2022

Supervised By :Ankita Jodhani 06/28/2022

Integration File: autoint1.e
 Quant Time: Jun 28 03:06:22 2022
 Quant Method : Z:\pestpcbsrv\HPCHEM1\FID_D\methods\Aromatic EPH 062422.M
 Quant Title : GC Extractables
 QLast Update : Sat Jun 25 04:47:50 2022
 Response via : Initial Calibration
 Integrator: ChemStation

Volume Inj. : 1 µl
 Signal Phase : Rxi-1ms
 Signal Info : 20M x 0.18mm x 0.18µm





#4 2-Bromonaphthalene (SURR)

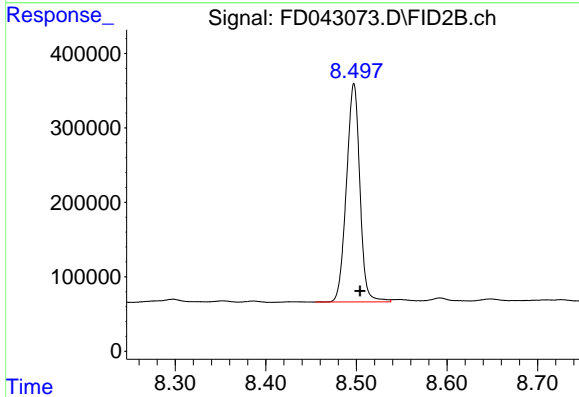
R.T.: 7.633 min
 Delta R.T.: -0.006 min
 Response: 4822538
 Conc: 31.23 ug/ml

Instrument :
 FID_D

ClientSampleId :
 SP-EXC-3-GR

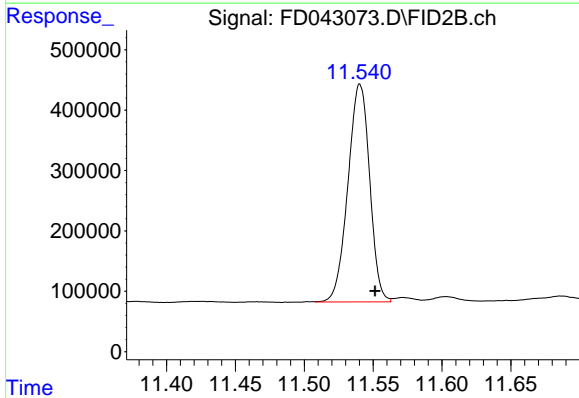
Manual Integrations
 APPROVED

Reviewed By :Yogesh Patel 06/28/2022
 Supervised By :Ankita Jodhani 06/28/2022



#6 2-Fluorobiphenyl (SURR)

R.T.: 8.497 min
 Delta R.T.: -0.007 min
 Response: 3023346
 Conc: 28.66 ug/ml



#11 ortho-Terphenyl (SURR)

R.T.: 11.540 min
 Delta R.T.: -0.011 min
 Response: 3957991
 Conc: 21.78 ug/ml m