

Data Path : Z:\pestpcbsrv\HPCHEM1\FID_D\Data\FD062818AR\
 Data File : FD024809.D
 Signal(s) : FID2B.CH
 Acq On : 28 Jun 2018 21:50
 Operator : UA/AJ
 Sample : J3709-03MSD
 Misc :
 ALS Vial : 62 Sample Multiplier: 1

Integration File: autoint1.e
 Quant Time: Jun 29 03:43:13 2018
 Quant Method : Z:\pestpcbsrv\HPCHEM1\FID_D\methods\Aromatic EPH 062118.M
 Quant Title : GC Extractables
 QLast Update : Fri Jun 22 09:02:19 2018
 Response via : Initial Calibration
 Integrator: ChemStation 6890 Scale Mode: Large solvent peaks clipped

Volume Inj. : 1 µl
 Signal Phase : Rxi-lms
 Signal Info : 20M x 0.18mm x 0.18µm

Compound	R.T.	Response	Conc Units
System Monitoring Compounds			
4) S 2-Bromonaphthalene (S...	7.480	3631639	39.700 ug/ml
Spiked Amount 50.000		Recovery =	79.40%
6) S 2-Fluorobiphenyl (SURR)	8.336	2556687	40.312 ug/ml
Spiked Amount 50.000 Range 0 - 131		Recovery =	80.62%
11) S ortho-Terphenyl (SURR)	11.386	3354393	33.425 ug/ml
Spiked Amount 50.000		Recovery =	66.85%
Target Compounds			
1) T 1,2,3-Trimethylbenzen...	4.273	1381963	14.870 ug/ml
2) T Naphthalene (C11.7)	5.812	2675908	26.371 ug/ml
3) T 2-Methylnaphthalene (...)	6.865	2944644	28.962 ug/ml
5) T Acenaphthylene (C15.06)	8.139	3014499	30.191 ug/ml
7) T Acenaphthene (C15.5)	8.435	3127220	29.937 ug/ml
8) T Flouorene (C16.55)	9.216	3185999	30.492 ug/ml
9) T Phenanthrene (C19.36)	10.610	3363397	32.713 ug/ml
10) T Anthracene (C19.43)	10.685	3335701	32.719 ug/ml
12) T Fluoranthene (C21.85)	12.422	3526287	35.365 ug/ml
13) T Pyrene (C20.8)	12.717	3462035	34.816 ug/ml
14) T Benzo[a]anthracene (C...	14.591	3531160	37.613 ug/ml
15) T Chrysene (C27.41)	14.634	3495112	36.945 ug/ml
16) T benzo[b]fluoranthene ...	16.141	3545308	34.284 ug/ml
17) T Bnezo[k]fluoranthene ...	16.176	3452634	32.719 ug/ml
18) T Benzo[a]pyrene (C31.34)	16.518	3421758	32.927 ug/ml
19) T Indeno[1,2,3-cd]pyren...	17.883	3221588	30.225 ug/ml
20) T Dibenz[a,h]anthracene...	17.925	3459200	33.074 ug/ml
21) T Benzo[g,h,i]perylene ...	18.139	3248848	30.587 ug/ml

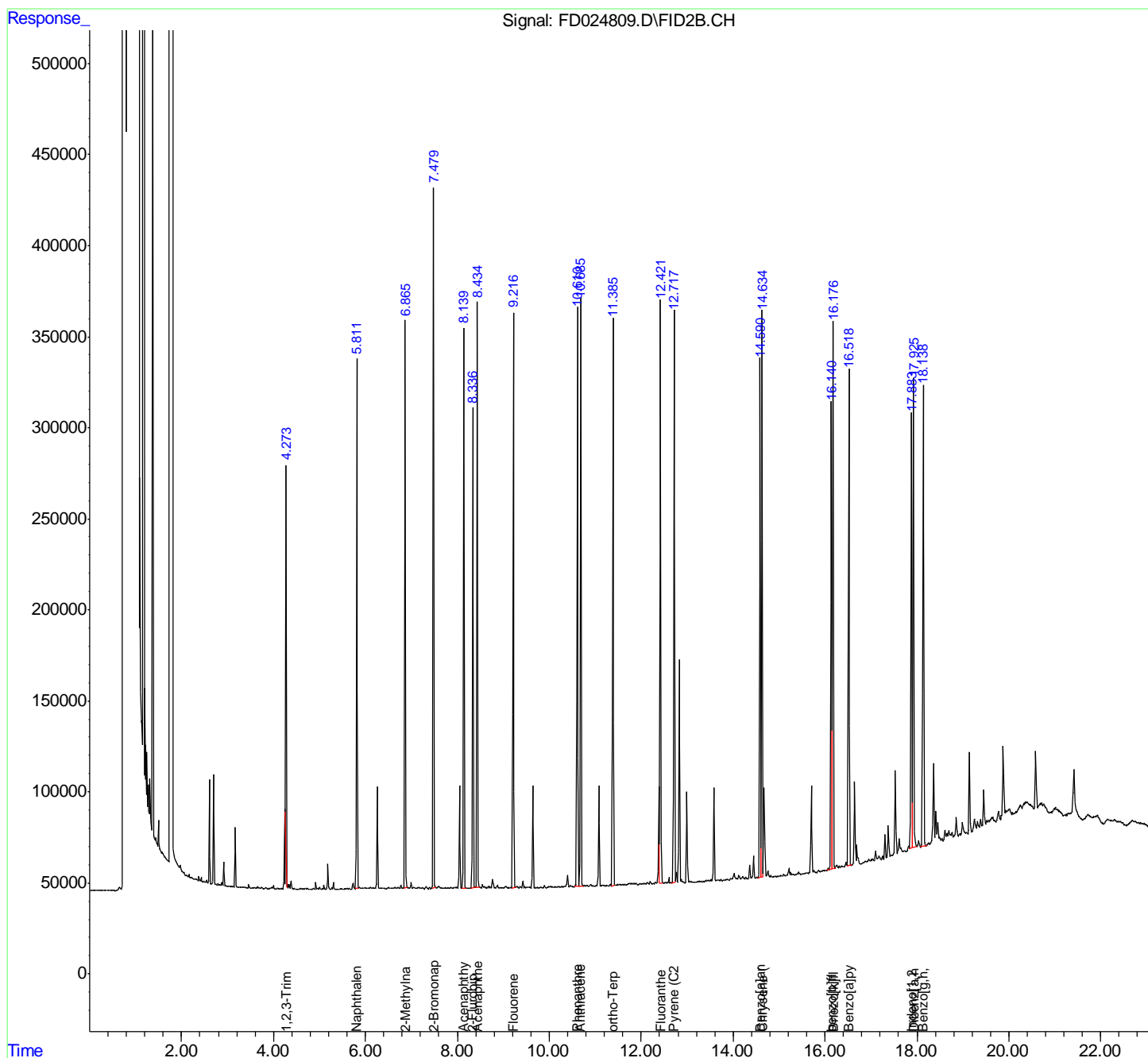
(f)=RT Delta > 1/2 Window

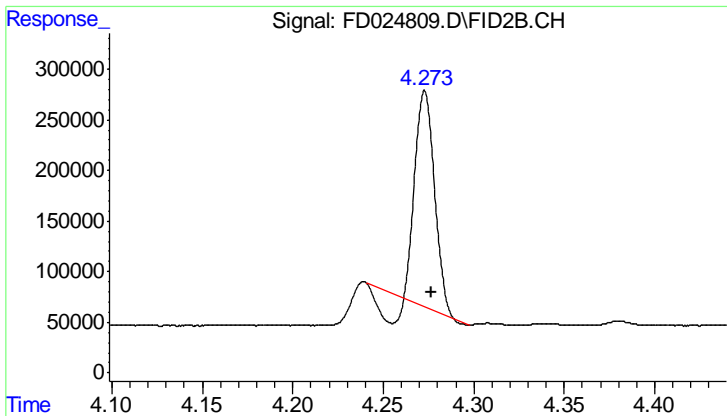
(m)=manual int.

Data Path : Z:\pestpcbsrv\HPCHEM1\FID_D\Data\FD062818AR\
 Data File : FD024809.D
 Signal(s) : FID2B.CH
 Acq On : 28 Jun 2018 21:50
 Operator : UA/AJ
 Sample : J3709-03MSD
 Misc :
 ALS Vial : 62 Sample Multiplier: 1

Integration File: autoint1.e
 Quant Time: Jun 29 03:43:13 2018
 Quant Method : Z:\pestpcbsrv\HPCHEM1\FID_D\methods\Aromatic EPH 062118.M
 Quant Title : GC Extractables
 QLast Update : Fri Jun 22 09:02:19 2018
 Response via : Initial Calibration
 Integrator: ChemStation 6890 Scale Mode: Large solvent peaks clipped

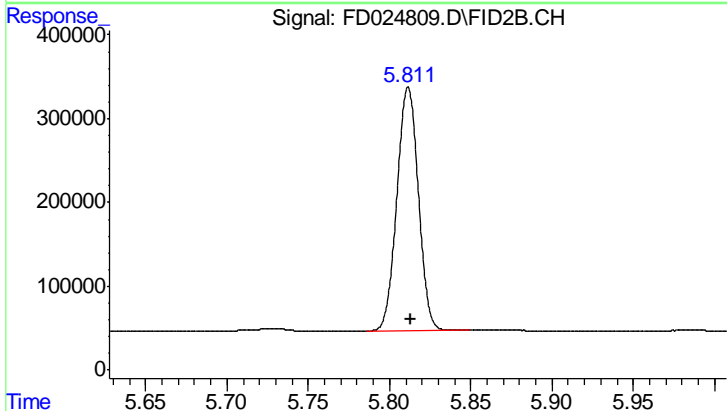
Volume Inj. : 1 µl
 Signal Phase : Rxi-1ms
 Signal Info : 20M x 0.18mm x 0.18µm





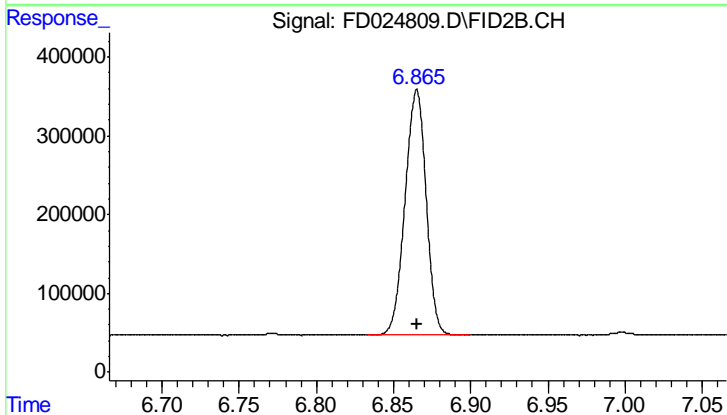
#1 1,2,3-Trimethylbenzene (C10.1)

R.T.: 4.273 min
 Delta R.T.: -0.003 min
 Response: 1381963
 Conc: 14.87 ug/ml



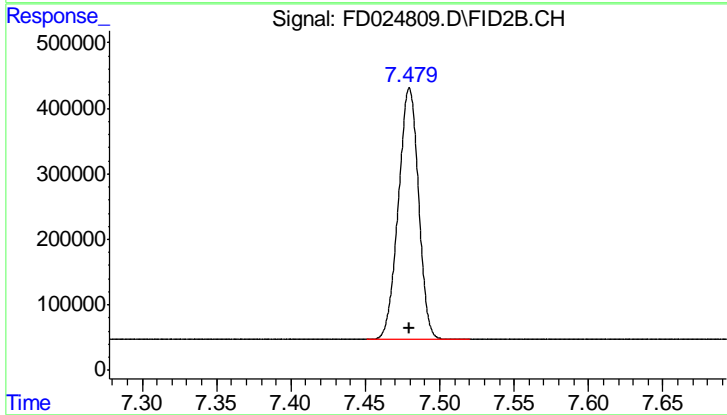
#2 Naphthalene (C11.7)

R.T.: 5.812 min
 Delta R.T.: -0.002 min
 Response: 2675908
 Conc: 26.37 ug/ml



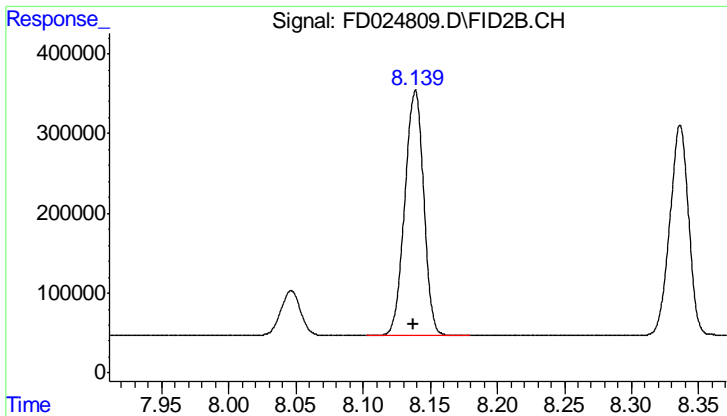
#3 2-Methylnaphthalene (C12.89)

R.T.: 6.865 min
 Delta R.T.: 0.000 min
 Response: 2944644
 Conc: 28.96 ug/ml



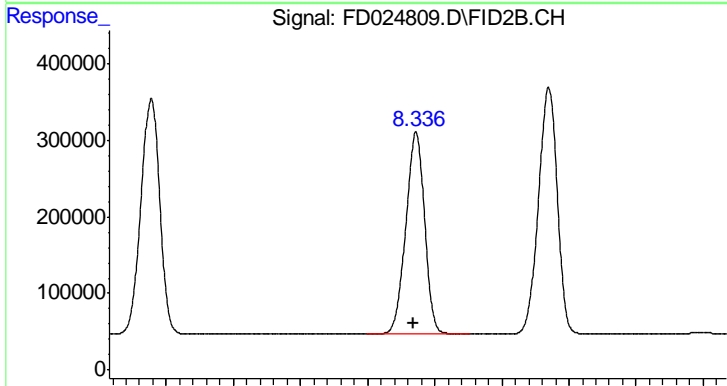
#4 2-Bromonaphthalene (SURR)

R.T.: 7.480 min
 Delta R.T.: 0.000 min
 Response: 3631639
 Conc: 39.70 ug/ml



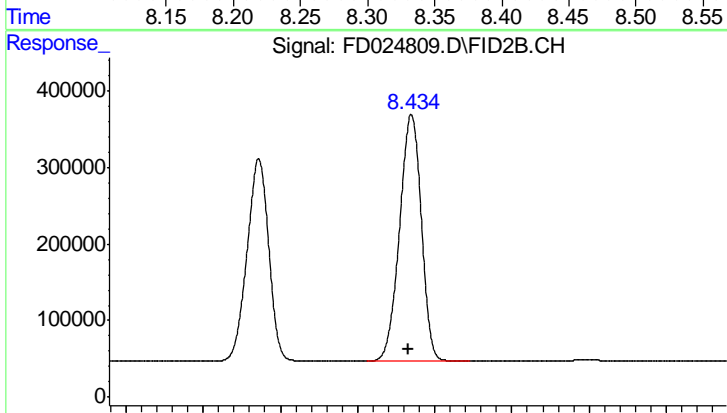
#5 Acenaphthylene (C15.06)

R.T.: 8.139 min
Delta R.T.: 0.001 min
Response: 3014499
Conc: 30.19 ug/ml



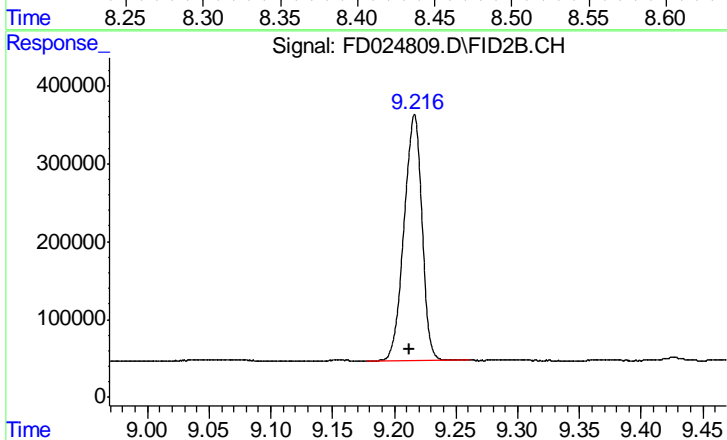
#6 2-Fluorobiphenyl (SURR)

R.T.: 8.336 min
Delta R.T.: 0.003 min
Response: 2556687
Conc: 40.31 ug/ml



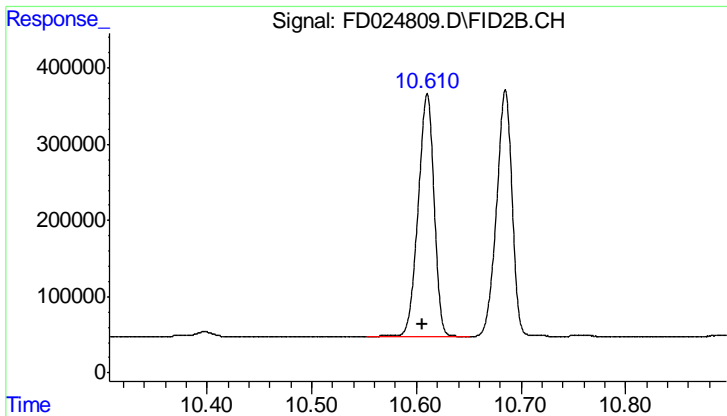
#7 Acenaphthene (C15.5)

R.T.: 8.435 min
Delta R.T.: 0.002 min
Response: 3127220
Conc: 29.94 ug/ml



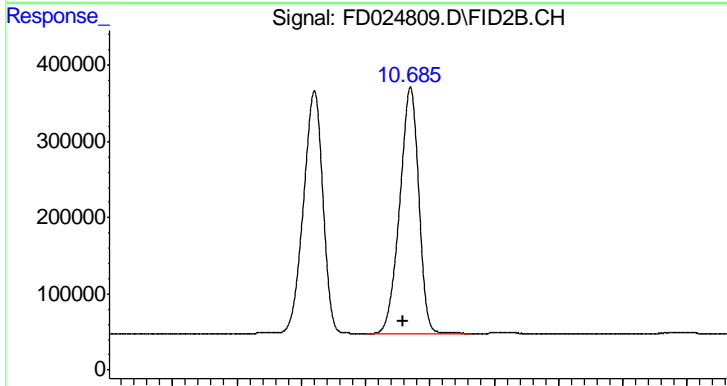
#8 Fluorene (C16.55)

R.T.: 9.216 min
Delta R.T.: 0.004 min
Response: 3185999
Conc: 30.49 ug/ml



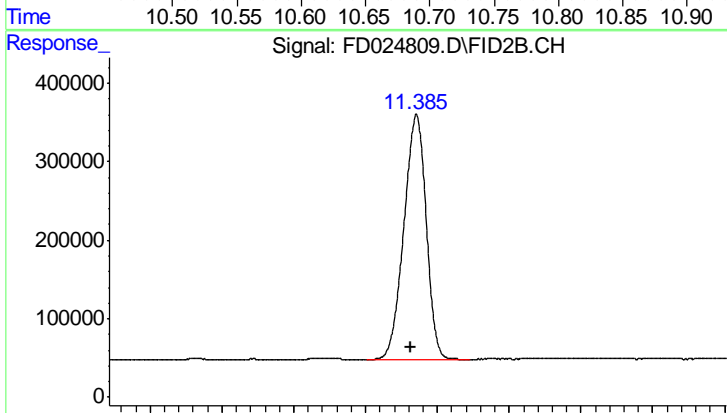
#9 Phenanthrene (C19.36)

R.T.: 10.610 min
 Delta R.T.: 0.005 min
 Response: 3363397
 Conc: 32.71 ug/ml



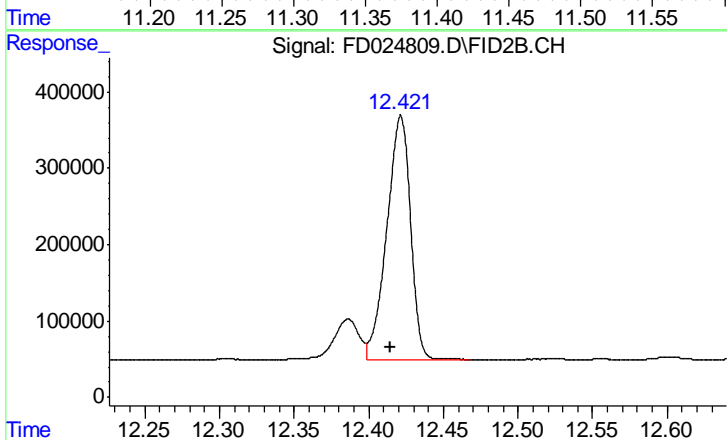
#10 Anthracene (C19.43)

R.T.: 10.685 min
 Delta R.T.: 0.006 min
 Response: 3335701
 Conc: 32.72 ug/ml



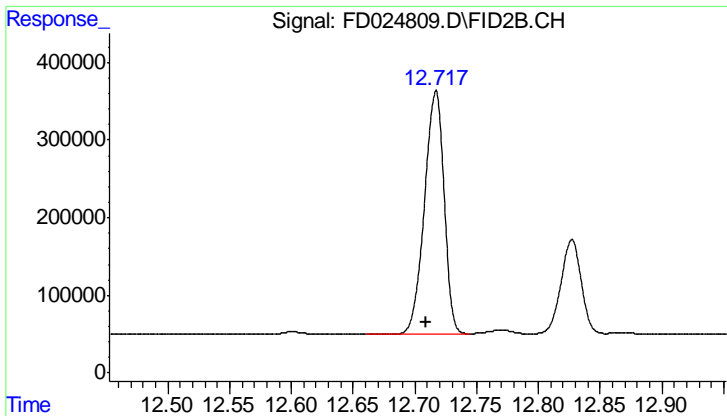
#11 ortho-Terphenyl (SURR)

R.T.: 11.386 min
 Delta R.T.: 0.004 min
 Response: 3354393
 Conc: 33.42 ug/ml

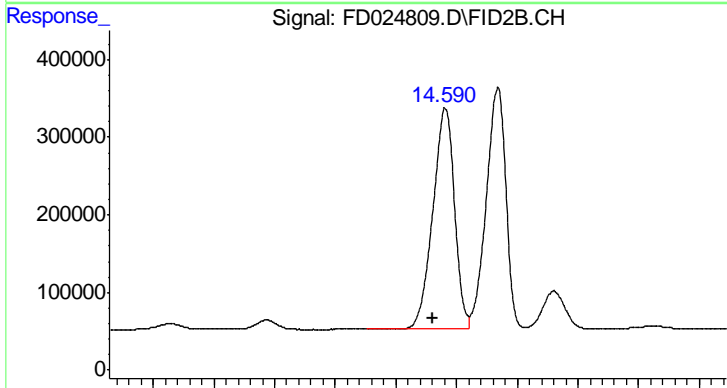


#12 Fluoranthene (C21.85)

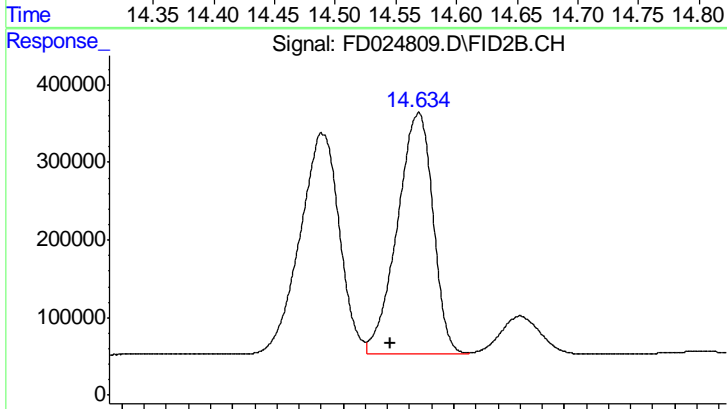
R.T.: 12.422 min
 Delta R.T.: 0.007 min
 Response: 3526287
 Conc: 35.36 ug/ml



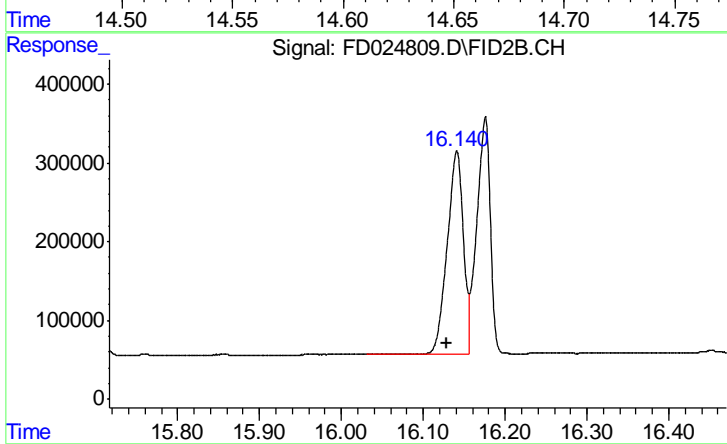
#13 Pyrene (C20.8)
R.T.: 12.717 min
Delta R.T.: 0.008 min
Response: 3462035
Conc: 34.82 ug/ml



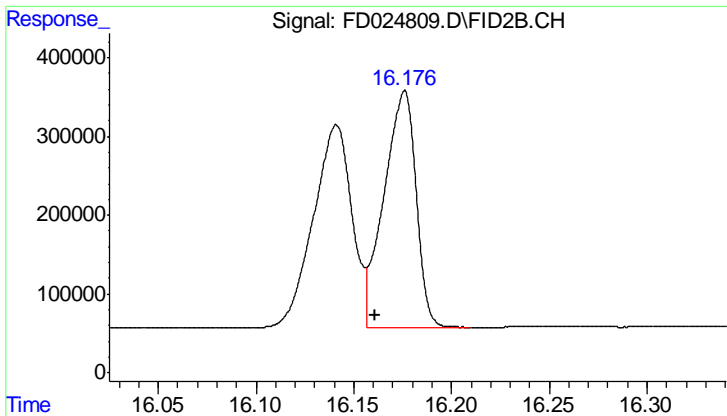
#14 Benzo[a]anthracene (C26.37)
R.T.: 14.591 min
Delta R.T.: 0.010 min
Response: 3531160
Conc: 37.61 ug/ml



#15 Chrysene (C27.41)
R.T.: 14.634 min
Delta R.T.: 0.013 min
Response: 3495112
Conc: 36.95 ug/ml

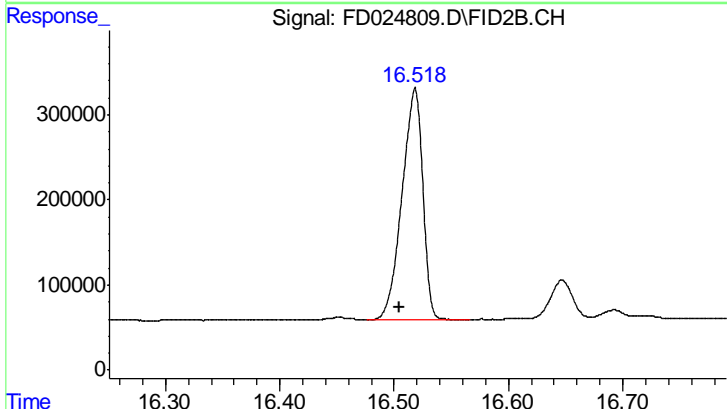


#16 benzo[b]fluoranthene (C30.41)
R.T.: 16.141 min
Delta R.T.: 0.013 min
Response: 3545308
Conc: 34.28 ug/ml



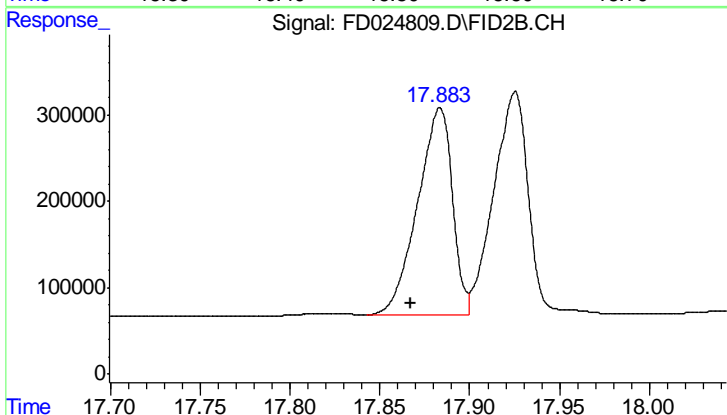
#17 Bnezo[k]fluoranthene (C30.14)

R.T.: 16.176 min
 Delta R.T.: 0.015 min
 Response: 3452634
 Conc: 32.72 ug/ml



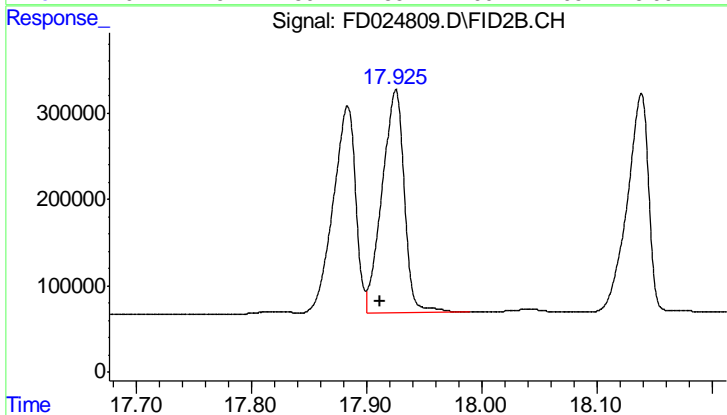
#18 Benzo[a]pyrene (C31.34)

R.T.: 16.518 min
 Delta R.T.: 0.014 min
 Response: 3421758
 Conc: 32.93 ug/ml



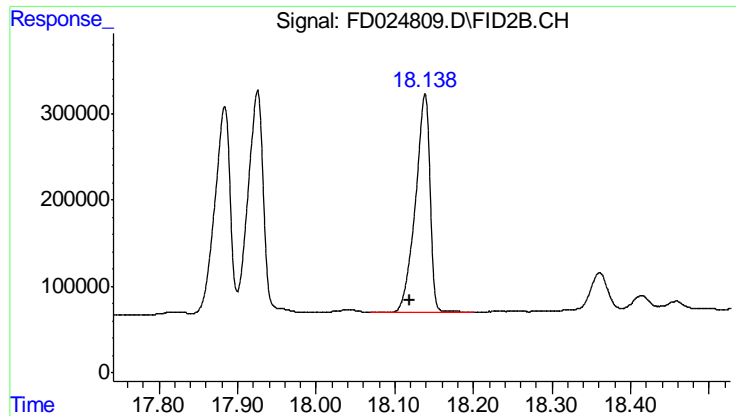
#19 Indeno[1,2,3-cd]pyrene (C35.01)

R.T.: 17.883 min
 Delta R.T.: 0.017 min
 Response: 3221588
 Conc: 30.22 ug/ml



#20 Dibenz[a,h]anthracene (C30.36)

R.T.: 17.925 min
 Delta R.T.: 0.014 min
 Response: 3459200
 Conc: 33.07 ug/ml



#21 Benzo[g,h,i]perylene (C34.01)

R.T.: 18.139 min
Delta R.T.: 0.019 min
Response: 3248848
Conc: 30.59 ug/ml