

Data Path : Z:\pestpcbsrv\HPCHEM1\FID_D\Data\FD062818AR\
 Data File : FD024811.D
 Signal(s) : FID2B.CH
 Acq On : 28 Jun 2018 23:13
 Operator : UA/AJ
 Sample : J3709-05
 Misc :
 ALS Vial : 64 Sample Multiplier: 1

Integration File: autoint1.e
 Quant Time: Jun 29 03:43:34 2018
 Quant Method : Z:\pestpcbsrv\HPCHEM1\FID_D\methods\Aromatic EPH 062118.M
 Quant Title : GC Extractables
 QLast Update : Fri Jun 22 09:02:19 2018
 Response via : Initial Calibration
 Integrator: ChemStation 6890 Scale Mode: Large solvent peaks clipped

Volume Inj. : 1 µl
 Signal Phase : Rxi-lms
 Signal Info : 20M x 0.18mm x 0.18µm

Compound	R.T.	Response	Conc Units
System Monitoring Compounds			
4) S 2-Bromonaphthalene (S...	7.480	3873702	42.346 ug/ml
Spiked Amount 50.000		Recovery =	84.69%
6) S 2-Flurobiphenyl (SURR)	8.336	2711319	42.750 ug/ml
Spiked Amount 50.000 Range 0 - 131		Recovery =	85.50%
11) S ortho-Terphenyl (SURR)	11.385	3042275	30.315 ug/ml
Spiked Amount 50.000		Recovery =	60.63%

Target Compounds

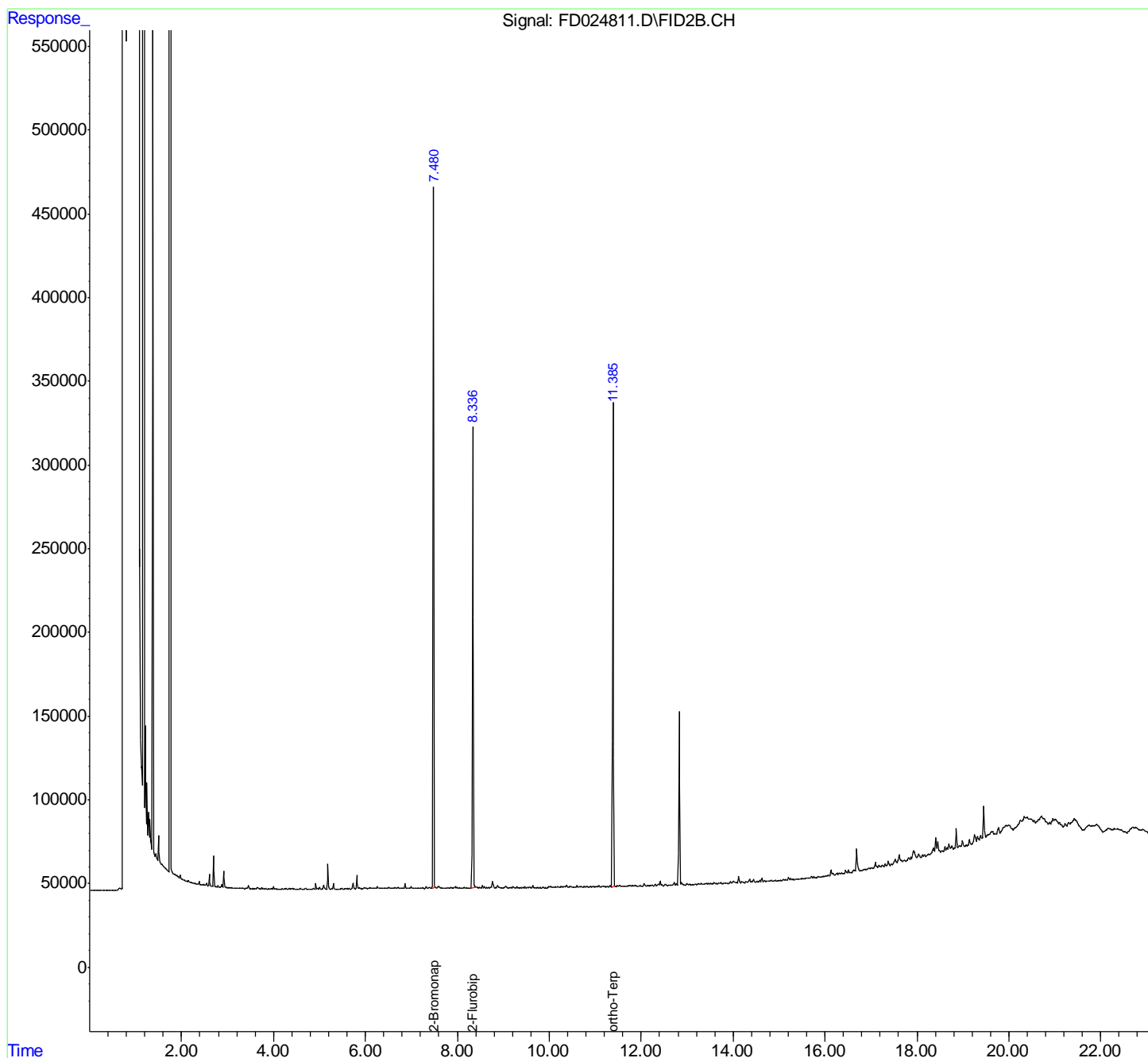
(f)=RT Delta > 1/2 Window

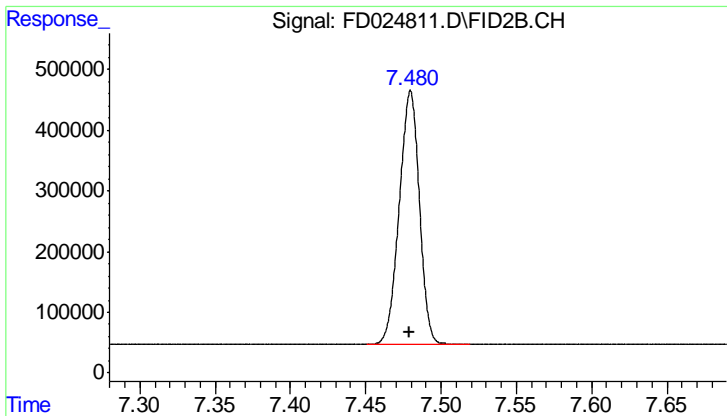
(m)=manual int.

Data Path : Z:\pestpcbsrv\HPCHEM1\FID_D\Data\FD062818AR\
Data File : FD024811.D
Signal(s) : FID2B.CH
Acq On : 28 Jun 2018 23:13
Operator : UA/AJ
Sample : J3709-05
Misc :
ALS Vial : 64 Sample Multiplier: 1

Integration File: autoint1.e
Quant Time: Jun 29 03:43:34 2018
Quant Method : Z:\pestpcbsrv\HPCHEM1\FID_D\methods\Aromatic EPH 062118.M
Quant Title : GC Extractables
QLast Update : Fri Jun 22 09:02:19 2018
Response via : Initial Calibration
Integrator: ChemStation 6890 Scale Mode: Large solvent peaks clipped

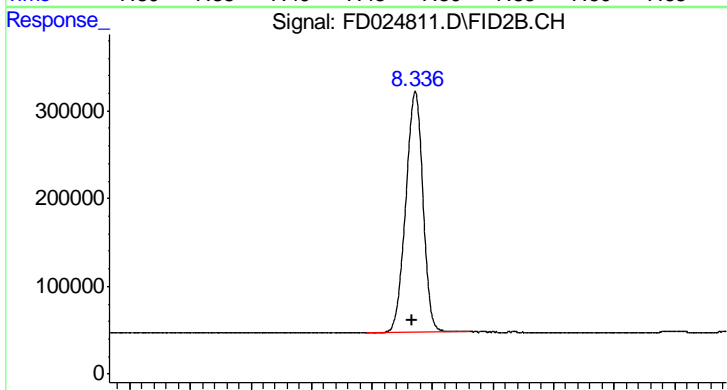
Volume Inj. : 1 µl
Signal Phase : Rxi-lms
Signal Info : 20M x 0.18mm x 0.18µm





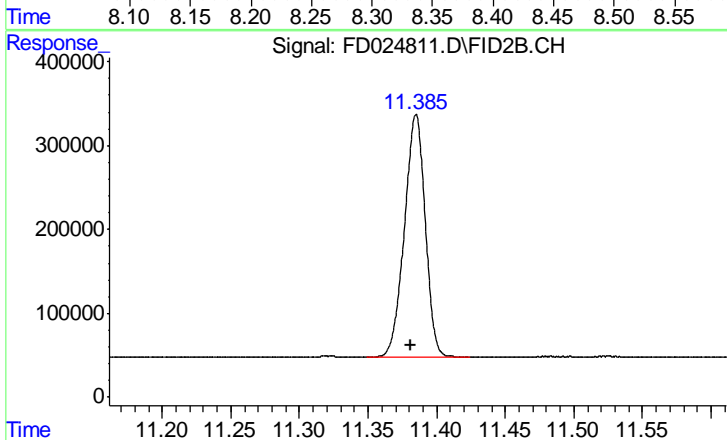
#4 2-Bromonaphthalene (SURR)

R.T.: 7.480 min
Delta R.T.: 0.000 min
Response: 3873702
Conc: 42.35 ug/ml



#6 2-Fluorobiphenyl (SURR)

R.T.: 8.336 min
Delta R.T.: 0.002 min
Response: 2711319
Conc: 42.75 ug/ml



#11 ortho-Terphenyl (SURR)

R.T.: 11.385 min
Delta R.T.: 0.004 min
Response: 3042275
Conc: 30.31 ug/ml