

Data Path : Z:\pestpcbsrv\HPCHEM1\FID\_D\Data\FD062821A\  
 Data File : FD038020.D  
 Signal(s) : FID2B.CH  
 Acq On : 28 Jun 2021 20:08  
 Operator : DD\AJ  
 Sample : 20 PPM ALIPHATIC HC STD  
 Misc :  
 ALS Vial : 52 Sample Multiplier: 1

Instrument :  
 FID\_D  
 ClientSampleId :  
 20 PPM ALIPHATIC HC STD

Manual Integrations  
 APPROVED

mohammad  
 6/29/2021 3:55:30 PM

Integration File: autoint1.e  
 Quant Time: Jun 29 04:32:13 2021  
 Quant Method : Z:\pestpcbsrv\HPCHEM1\FID\_D\methods\Alaphatic EPH 061021.M  
 Quant Title : GC Extractables  
 QLast Update : Fri Jun 11 05:11:15 2021  
 Response via : Initial Calibration  
 Integrator: ChemStation 6890 Scale Mode: Large solvent peaks clipped

Volume Inj. : 1 ul  
 Signal Phase : Rxi-1ms  
 Signal Info : 20M x 0.18mm x 0.18um

Compound	R.T.	Response	Conc Units
-----			
System Monitoring Compounds			
9) S ortho-Terphenyl (SURR)	11.426	2681373	18.894 ug/ml
Spiked Amount	50.000	Recovery	= 37.79%
12) S 1-chlorooctadecane (S...	12.860	2047382	18.364 ug/ml
Spiked Amount	50.000	Recovery	= 36.73%
Target Compounds			
1) T n-Nonane (C9)	3.241	2532543	20.947 ug/ml
2) T n-Decane (C10)	4.297	2559969	20.885 ug/ml
3) T A~Naphthalene (C11.7)	5.866	2783201	20.639 ug/ml
4) T n-Dodecane (C12)	6.303	2581306	21.026 ug/ml
5) T A~2-methylnaphthalene...	6.917	2770232	20.458 ug/ml
6) T n-Tetradecane (C14)	8.089	2600865	20.726 ug/ml
7) T n-Hexadecane (C16)	9.682	2564449	20.037 ug/ml
8) T n-Octadecane (C18)	11.117	2572685	19.469 ug/ml
10) T n-Eicosane (C20)	12.419	2488284	18.853 ug/ml
11) T n-Heneicosane (C21)	13.028	2471852	18.628 ug/ml
13) T n-Docosane (C22)	13.611	2403987	18.335 ug/ml
14) T n-Tetracosane (C24)	14.709	2323575	17.806 ug/ml
15) T n-Hexacosane (C26)	15.724	2184141	17.209 ug/ml
16) T n-Octacosane (C28)	16.669	2099379	16.919 ug/ml
17) T n-Tricontane (C30)	17.552	2040180	16.956 ug/ml
18) T n-Dotriacontane (C32)	18.379	1979697	17.296 ug/ml
19) T n-Tetratriacontane (C34)	19.159	1953189	18.070 ug/ml
20) T n-Hexatriacontane (C36)	19.893	1887831	18.904 ug/ml
21) T n-Octatriacontane (C38)	20.599	1808752	19.691 ug/ml
22) T n-Tetracontane (C40)	21.428	1885451	19.822 ug/mlm
-----			

(f)=RT Delta > 1/2 Window

(m)=manual int.

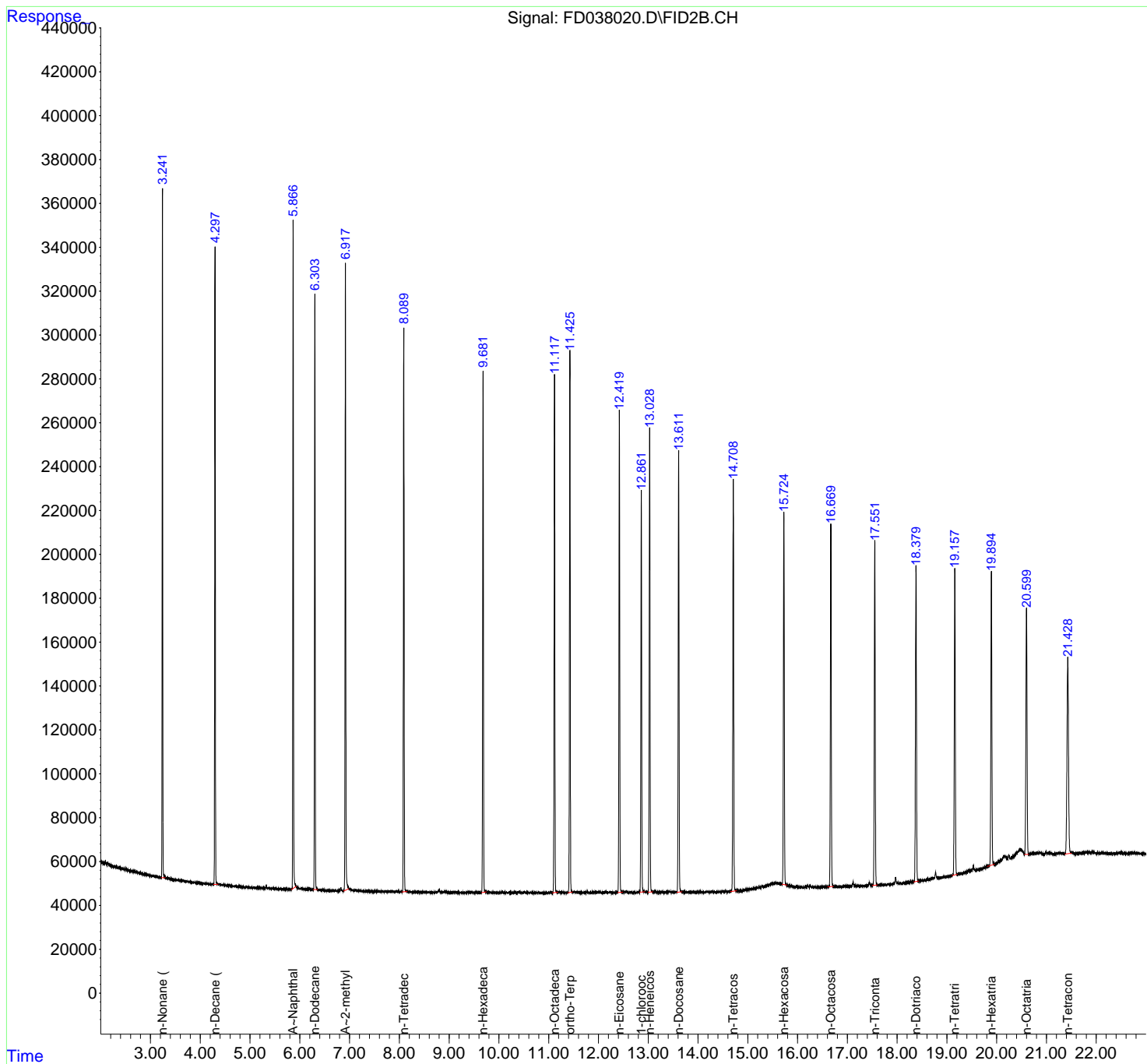
Data Path : Z:\pestpcbsrv\HPCHEM1\FID\_D\Data\FD062821AL\  
 Data File : FD038020.D  
 Signal(s) : FID2B.CH  
 Acq On : 28 Jun 2021 20:08  
 Operator : DD\AJ  
 Sample : 20 PPM ALIPHATIC HC STD  
 Misc :  
 ALS Vial : 52 Sample Multiplier: 1

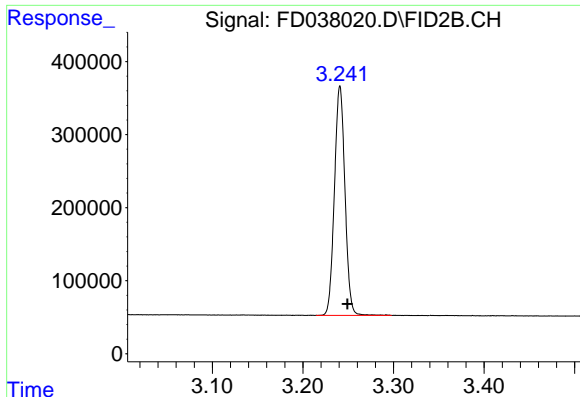
**Instrument :**  
 FID\_D  
**Client Sampled :**  
 20 PPM ALIPHATIC HC STD

**Manual Integrations**  
**APPROVED**  
 mohammad  
 6/29/2021 3:55:30 PM

Integration File: autoint1.e  
 Quant Time: Jun 29 04:32:13 2021  
 Quant Method : Z:\pestpcbsrv\HPCHEM1\FID\_D\methods\Alaphatic EPH 061021.M  
 Quant Title : GC Extractables  
 QLast Update : Fri Jun 11 05:11:15 2021  
 Response via : Initial Calibration  
 Integrator: ChemStation 6890 Scale Mode: Large solvent peaks clipped

Volume Inj. : 1 ul  
 Signal Phase : Rxi-1ms  
 Signal Info : 20M x 0.18mm x 0.18um





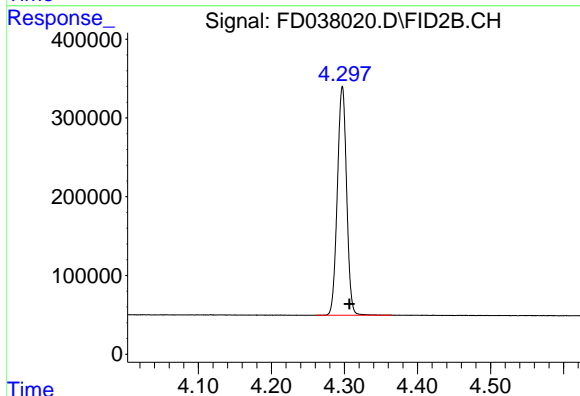
#1 n-Nonane (C9)

R.T.: 3.241 min  
 Delta R.T.: -0.008 min  
 Response: 2532543  
 Conc: 20.95 ug/ml

Instrument :  
 FID\_D  
 ClientSampleId :  
 20 PPM ALIPHATIC HC STD

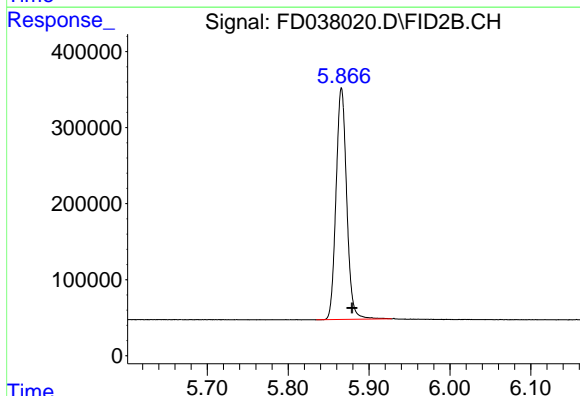
Manual Integrations  
 APPROVED

mohammad  
 6/29/2021 3:55:30 PM



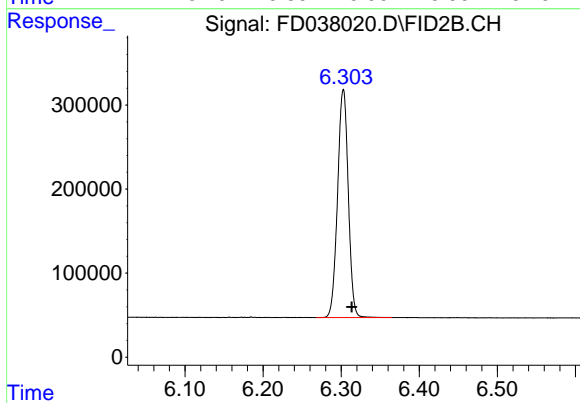
#2 n-Decane (C10)

R.T.: 4.297 min  
 Delta R.T.: -0.010 min  
 Response: 2559969  
 Conc: 20.88 ug/ml



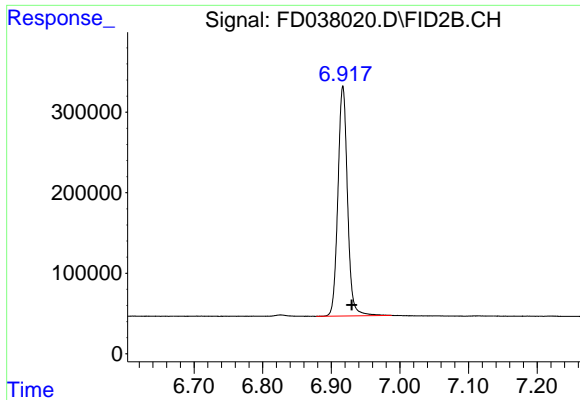
#3 A~Naphthalene (C11.7)

R.T.: 5.866 min  
 Delta R.T.: -0.013 min  
 Response: 2783201  
 Conc: 20.64 ug/ml



#4 n-Dodecane (C12)

R.T.: 6.303 min  
 Delta R.T.: -0.011 min  
 Response: 2581306  
 Conc: 21.03 ug/ml

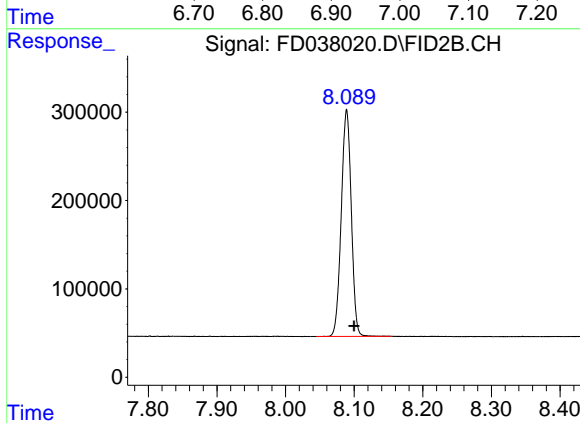


#5 A~2-methylnaphthalene (C12.89)

R.T.: 6.917 min  
 Delta R.T.: -0.013 min  
 Response: 2770232  
 Conc: 20.46 ug/ml

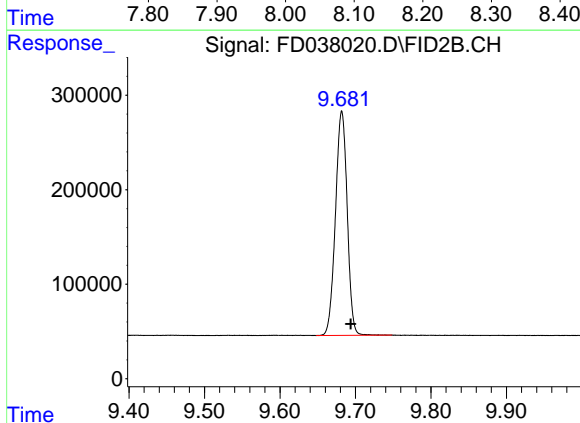
**Instrument :**  
 FID\_D  
**ClientSampled :**  
 20 PPM ALIPHATIC HC STD

**Manual Integrations**  
**APPROVED**  
 mohammad  
 6/29/2021 3:55:30 PM



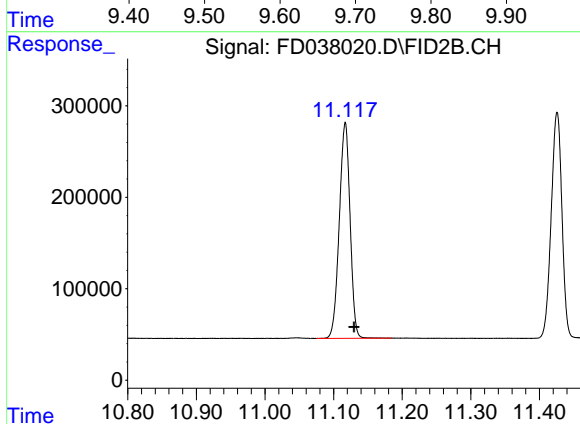
#6 n-Tetradecane (C14)

R.T.: 8.089 min  
 Delta R.T.: -0.011 min  
 Response: 2600865  
 Conc: 20.73 ug/ml



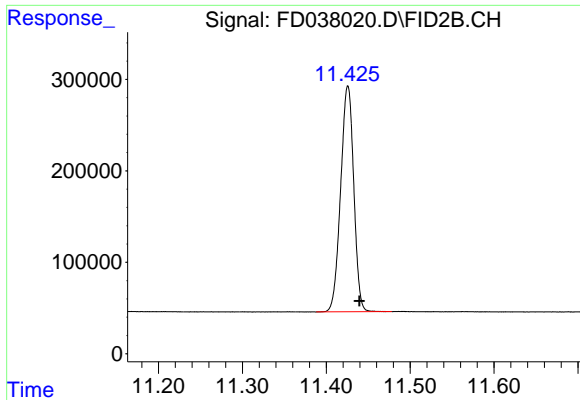
#7 n-Hexadecane (C16)

R.T.: 9.682 min  
 Delta R.T.: -0.012 min  
 Response: 2564449  
 Conc: 20.04 ug/ml



#8 n-Octadecane (C18)

R.T.: 11.117 min  
 Delta R.T.: -0.013 min  
 Response: 2572685  
 Conc: 19.47 ug/ml

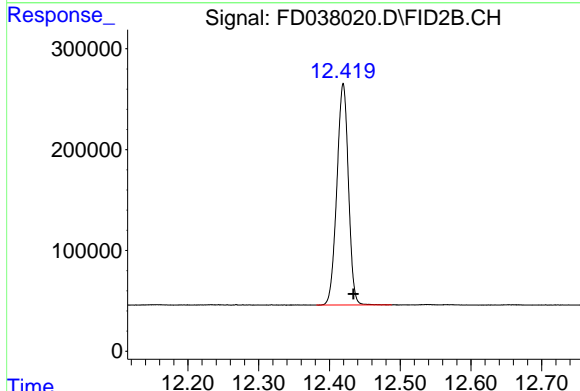


#9 ortho-Terphenyl (SURR)

R.T.: 11.426 min  
 Delta R.T.: -0.014 min  
 Response: 2681373  
 Conc: 18.89 ug/ml

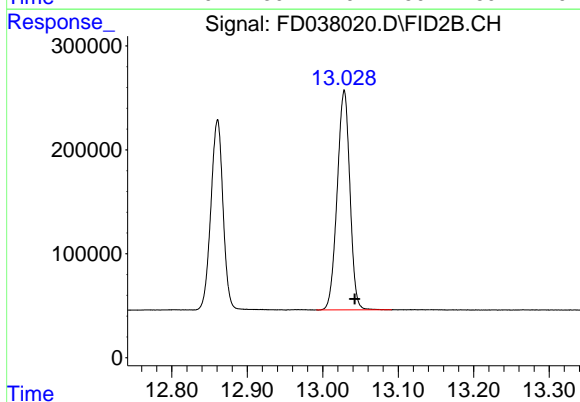
**Instrument :**  
 FID\_D  
**ClientSampled :**  
 20 PPM ALIPHATIC HC STD

**Manual Integrations**  
**APPROVED**  
 mohammad  
 6/29/2021 3:55:30 PM



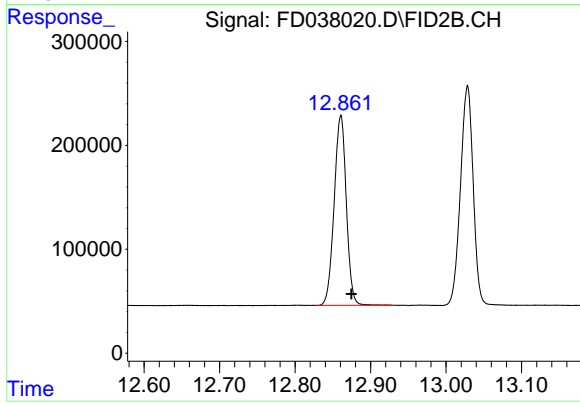
#10 n-Eicosane (C20)

R.T.: 12.419 min  
 Delta R.T.: -0.014 min  
 Response: 2488284  
 Conc: 18.85 ug/ml



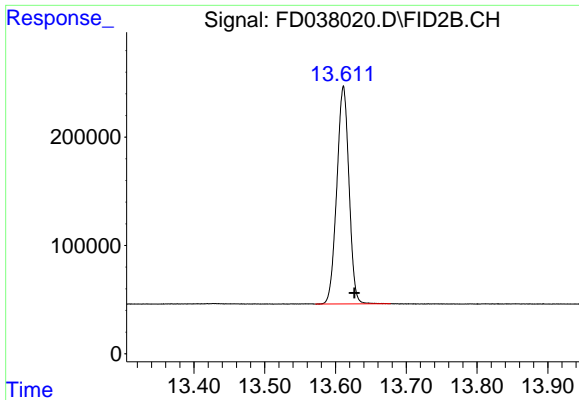
#11 n-Heneicosane (C21)

R.T.: 13.028 min  
 Delta R.T.: -0.014 min  
 Response: 2471852  
 Conc: 18.63 ug/ml



#12 1-chlorooctadecane (SURR)

R.T.: 12.860 min  
 Delta R.T.: -0.014 min  
 Response: 2047382  
 Conc: 18.36 ug/ml



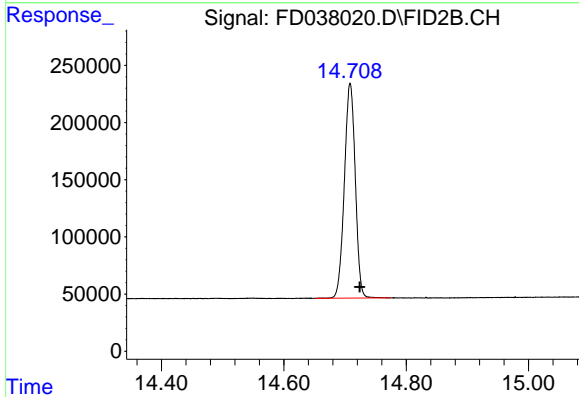
#13 n-Docosane (C22)

R.T.: 13.611 min  
 Delta R.T.: -0.016 min  
 Response: 2403987  
 Conc: 18.34 ug/ml

Instrument :  
 FID\_D  
 ClientSampled :  
 20 PPM ALIPHATIC HC STD

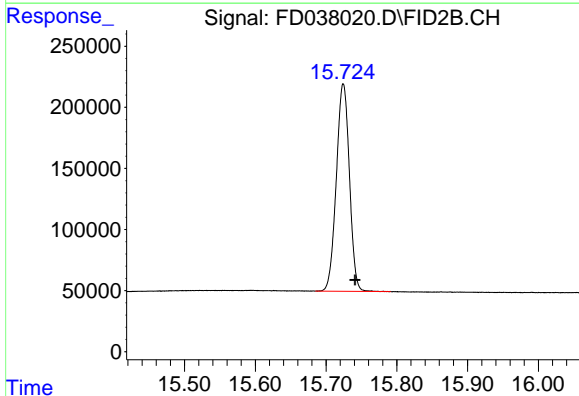
Manual Integrations  
 APPROVED

mohammad  
 6/29/2021 3:55:30 PM



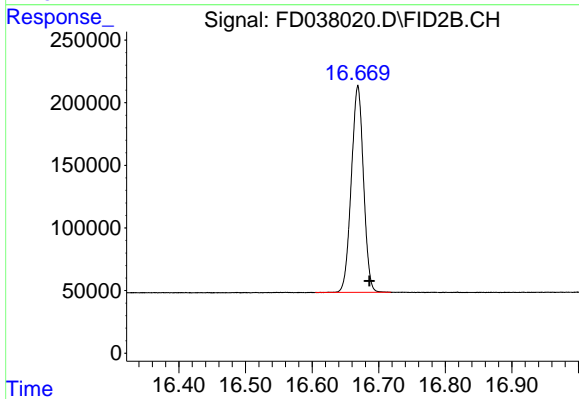
#14 n-Tetracosane (C24)

R.T.: 14.709 min  
 Delta R.T.: -0.015 min  
 Response: 2323575  
 Conc: 17.81 ug/ml



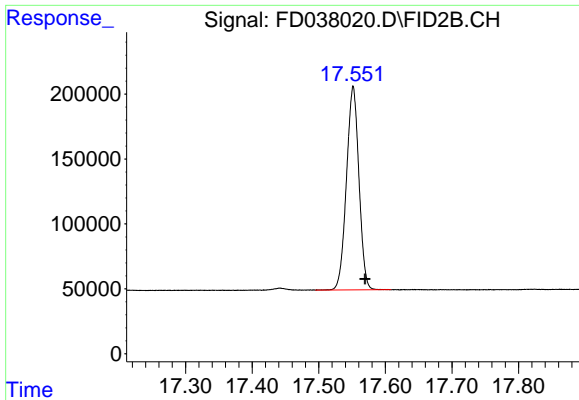
#15 n-Hexacosane (C26)

R.T.: 15.724 min  
 Delta R.T.: -0.017 min  
 Response: 2184141  
 Conc: 17.21 ug/ml



#16 n-Octacosane (C28)

R.T.: 16.669 min  
 Delta R.T.: -0.017 min  
 Response: 2099379  
 Conc: 16.92 ug/ml

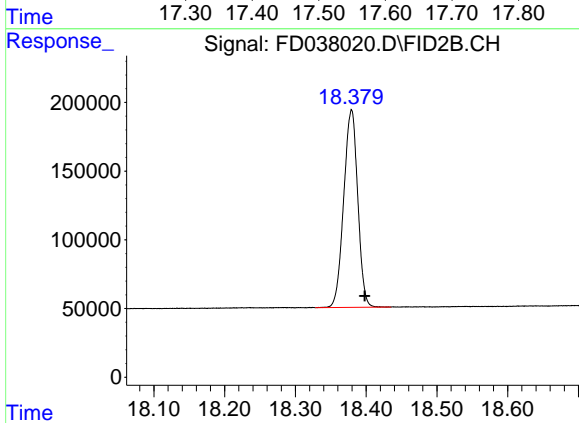


#17 n-Tricontane (C30)  
 R.T.: 17.552 min  
 Delta R.T.: -0.018 min  
 Response: 2040180  
 Conc: 16.96 ug/ml

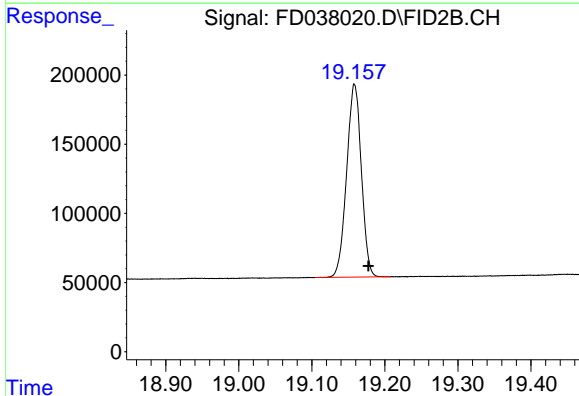
Instrument :  
 FID\_D  
 ClientSampleId :  
 20 PPM ALIPHATIC HC STD

Manual Integrations  
 APPROVED

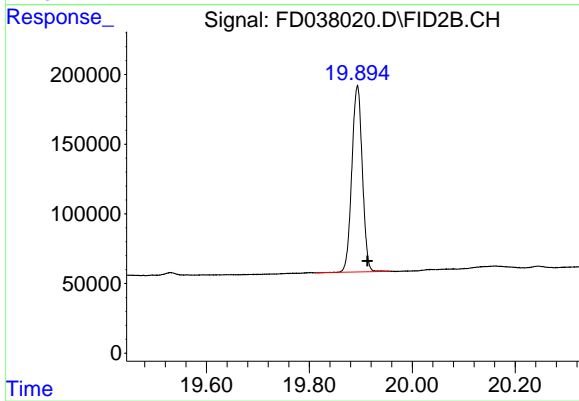
mohammad  
 6/29/2021 3:55:30 PM



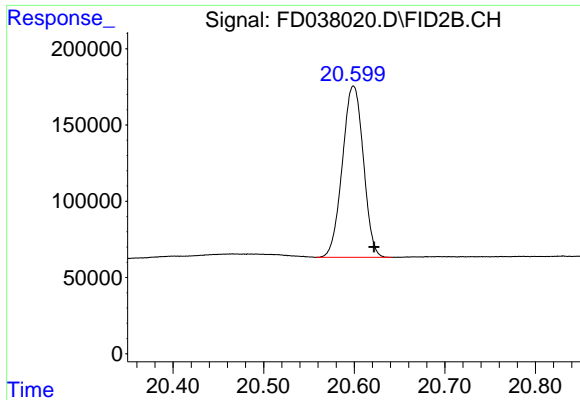
#18 n-Dotriacontane (C32)  
 R.T.: 18.379 min  
 Delta R.T.: -0.019 min  
 Response: 1979697  
 Conc: 17.30 ug/ml



#19 n-Tetratriacontane (C34)  
 R.T.: 19.159 min  
 Delta R.T.: -0.019 min  
 Response: 1953189  
 Conc: 18.07 ug/ml



#20 n-Hexatriacontane (C36)  
 R.T.: 19.893 min  
 Delta R.T.: -0.019 min  
 Response: 1887831  
 Conc: 18.90 ug/ml

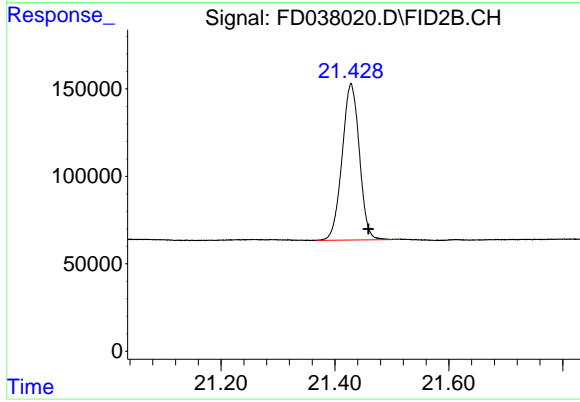


#21 n-Octatriacontane (C38)

R.T.: 20.599 min  
Delta R.T.: -0.023 min  
Response: 1808752  
Conc: 19.69 ug/ml

Instrument :  
FID\_D  
ClientSampled :  
20 PPM ALIPHATIC HC STD

Manual Integrations  
**APPROVED**  
mohammad  
6/29/2021 3:55:30 PM



#22 n-Tetracontane (C40)

R.T.: 21.428 min  
Delta R.T.: -0.031 min  
Response: 1885451  
Conc: 19.82 ug/ml m