

Data Path : Z:\pestpcbsrv\HPCHEM1\FID_D\Data\FD063021AL\
 Data File : FD038048.D
 Signal(s) : FID2B.CH
 Acq On : 30 Jun 2021 10:37
 Operator : DD\AJ
 Sample : 20 PPM ALIPHATIC HC STD
 Misc :
 ALS Vial : 57 Sample Multiplier: 1

Integration File: sample.E
 Quant Time: Jul 01 02:13:39 2021
 Quant Method : Z:\pestpcbsrv\HPCHEM1\FID_D\methods\Alaphatic EPH 061021.M
 Quant Title : GC Extractables
 QLast Update : Fri Jun 11 05:11:15 2021
 Response via : Initial Calibration
 Integrator: ChemStation 6890 Scale Mode: Large solvent peaks clipped

Volume Inj. : 1 ul
 Signal Phase : Rxi-1ms
 Signal Info : 20M x 0.18mm x 0.18um

Compound	R.T.	Response	Conc Units

System Monitoring Compounds			
9) S ortho-Terphenyl (SURR)	11.422	2868113	20.210 ug/ml
Spiked Amount	50.000	Recovery	= 40.42%
12) S 1-chlorooctadecane (S...	12.858	2192294	19.663 ug/ml
Spiked Amount	50.000	Recovery	= 39.33%
Target Compounds			
1) T n-Nonane (C9)	3.236	2687482	22.228 ug/ml
2) T n-Decane (C10)	4.292	2727679	22.253 ug/ml
3) T A~Naphthalene (C11.7)	5.861	2984083	22.128 ug/ml
4) T n-Dodecane (C12)	6.298	2767488	22.543 ug/ml
5) T A~2-methylnaphthalene...	6.912	2946296	21.758 ug/ml
6) T n-Tetradecane (C14)	8.085	2784282	22.187 ug/ml
7) T n-Hexadecane (C16)	9.678	2743773	21.438 ug/ml
8) T n-Octadecane (C18)	11.114	2760803	20.893 ug/ml
10) T n-Eicosane (C20)	12.417	2676255	20.278 ug/ml
11) T n-Heneicosane (C21)	13.025	2647224	19.949 ug/ml
13) T n-Docosane (C22)	13.609	2615376	19.948 ug/ml
14) T n-Tetracosane (C24)	14.705	2609888	20.000 ug/ml
15) T n-Hexacosane (C26)	15.722	2471085	19.470 ug/ml
16) T n-Octacosane (C28)	16.666	2402881	19.365 ug/ml
17) T n-Tricontane (C30)	17.548	2326216	19.333 ug/ml
18) T n-Dotriacontane (C32)	18.377	2240049	19.571 ug/ml
19) T n-Tetratriacontane (C34)	19.156	2161178	19.995 ug/ml
20) T n-Hexatriacontane (C36)	19.892	2060294	20.631 ug/ml
21) T n-Octatriacontane (C38)	20.597	1973753	21.488 ug/ml
22) T n-Tetracontane (C40)	21.427	2001483	21.042 ug/ml

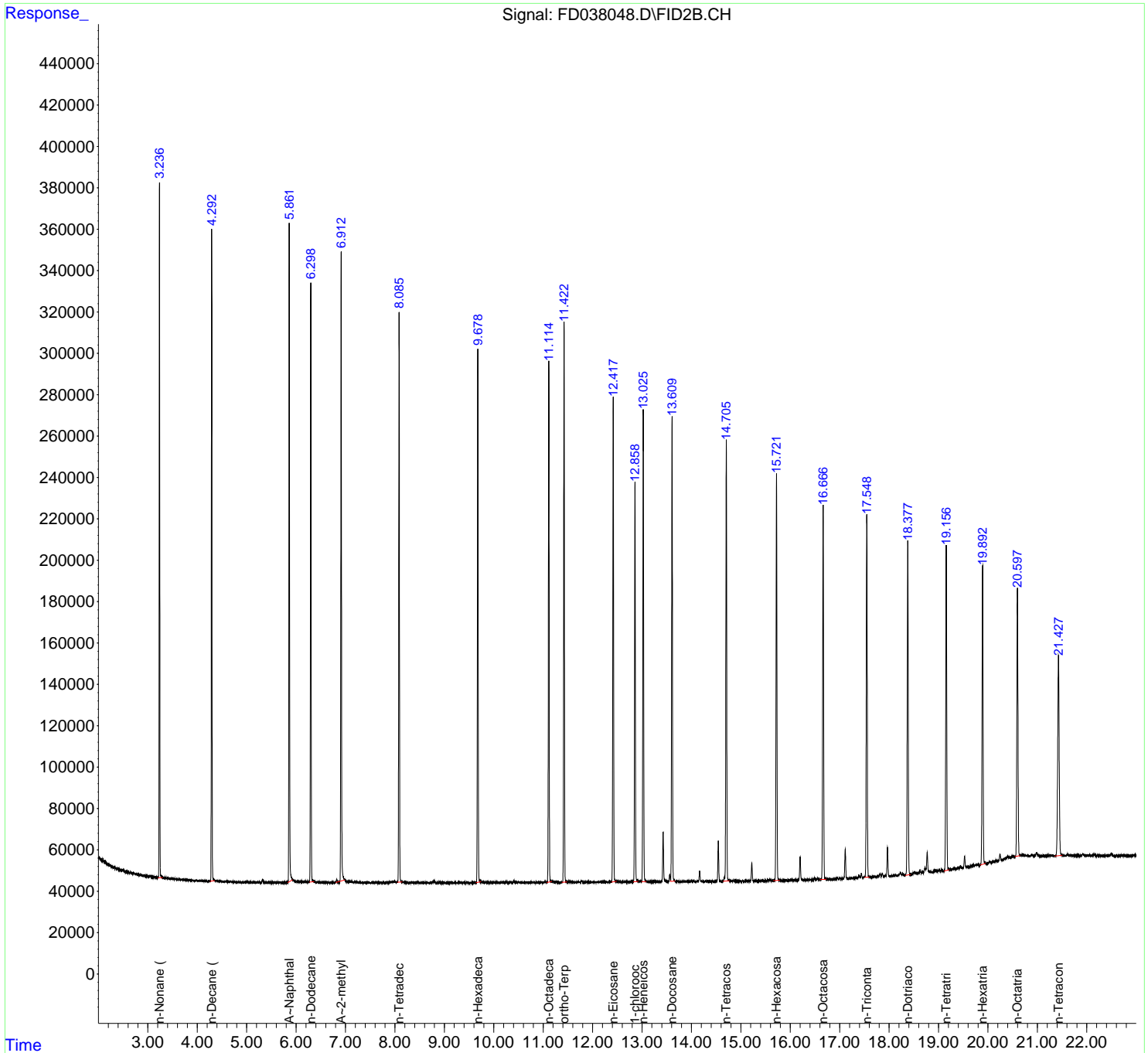
(f)=RT Delta > 1/2 Window

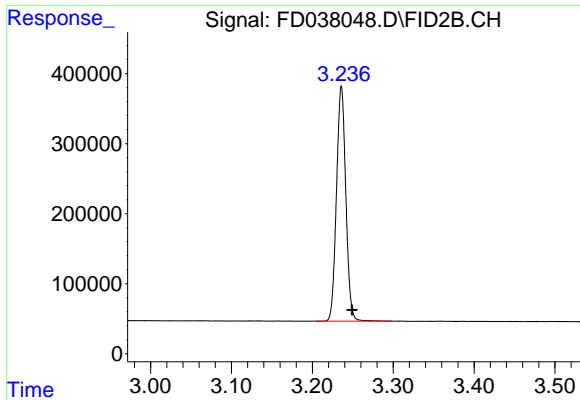
(m)=manual int.

Data Path : Z:\pestpcbsrv\HPCHEM1\FID_D\Data\FD063021AL\
 Data File : FD038048.D
 Signal(s) : FID2B.CH
 Acq On : 30 Jun 2021 10:37
 Operator : DD\AJ
 Sample : 20 PPM ALIPHATIC HC STD
 Misc :
 ALS Vial : 57 Sample Multiplier: 1

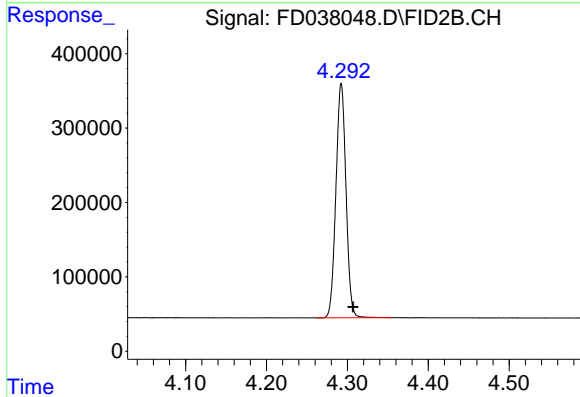
Integration File: sample.E
 Quant Time: Jul 01 02:13:39 2021
 Quant Method : Z:\pestpcbsrv\HPCHEM1\FID_D\methods\Aliphatic EPH 061021.M
 Quant Title : GC Extractables
 QLast Update : Fri Jun 11 05:11:15 2021
 Response via : Initial Calibration
 Integrator: ChemStation 6890 Scale Mode: Large solvent peaks clipped

Volume Inj. : 1 ul
 Signal Phase : Rxi-1ms
 Signal Info : 20M x 0.18mm x 0.18um

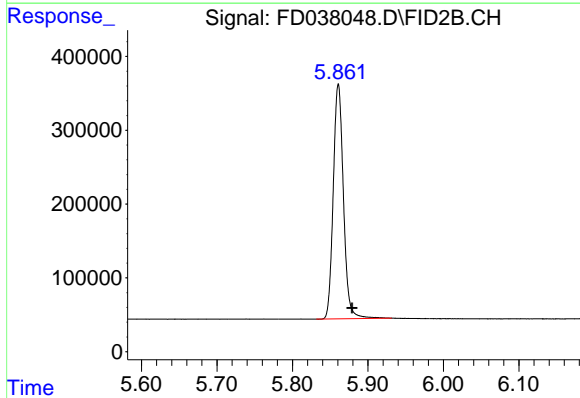




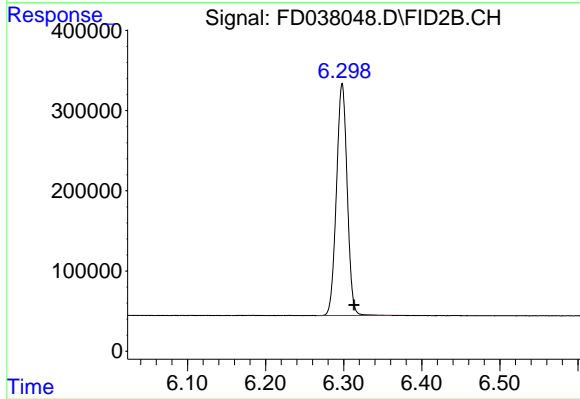
#1 n-Nonane (C9)
R.T.: 3.236 min
Delta R.T.: -0.013 min
Response: 2687482
Conc: 22.23 ug/ml



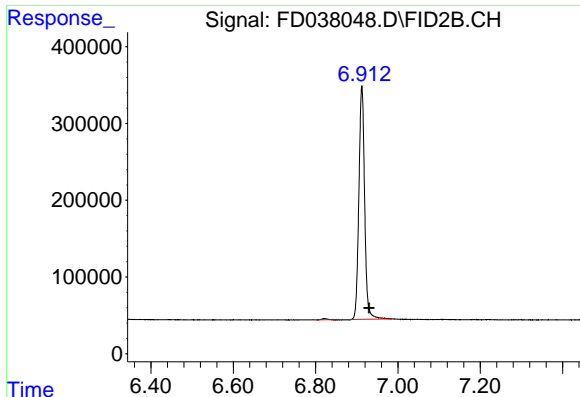
#2 n-Decane (C10)
R.T.: 4.292 min
Delta R.T.: -0.014 min
Response: 2727679
Conc: 22.25 ug/ml



#3 A~Naphthalene (C11.7)
R.T.: 5.861 min
Delta R.T.: -0.018 min
Response: 2984083
Conc: 22.13 ug/ml

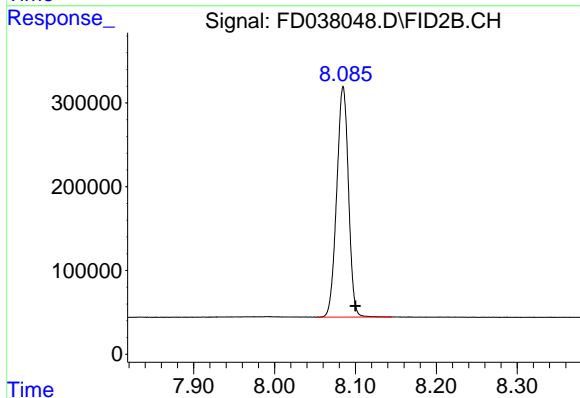


#4 n-Dodecane (C12)
R.T.: 6.298 min
Delta R.T.: -0.015 min
Response: 2767488
Conc: 22.54 ug/ml



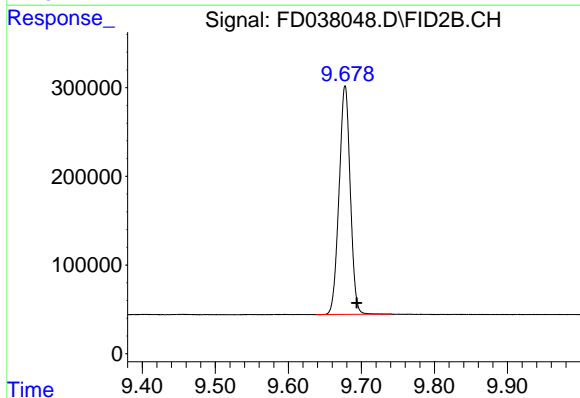
#5 A~2-methylnaphthalene (C12.89)

R.T.: 6.912 min
Delta R.T.: -0.017 min
Response: 2946296
Conc: 21.76 ug/ml



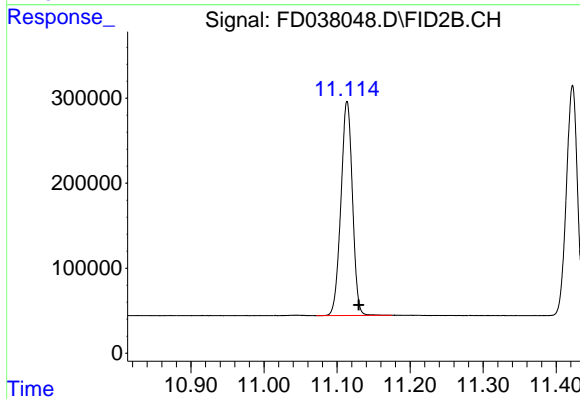
#6 n-Tetradecane (C14)

R.T.: 8.085 min
Delta R.T.: -0.015 min
Response: 2784282
Conc: 22.19 ug/ml



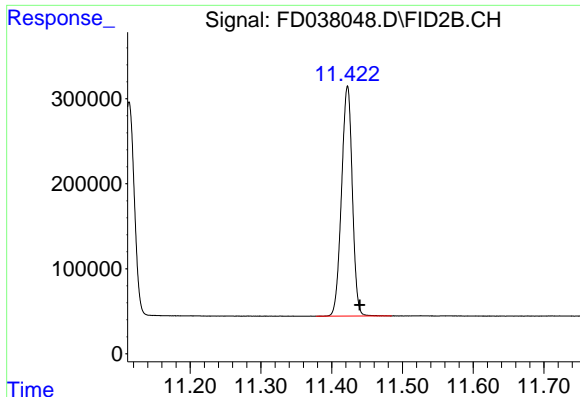
#7 n-Hexadecane (C16)

R.T.: 9.678 min
Delta R.T.: -0.016 min
Response: 2743773
Conc: 21.44 ug/ml



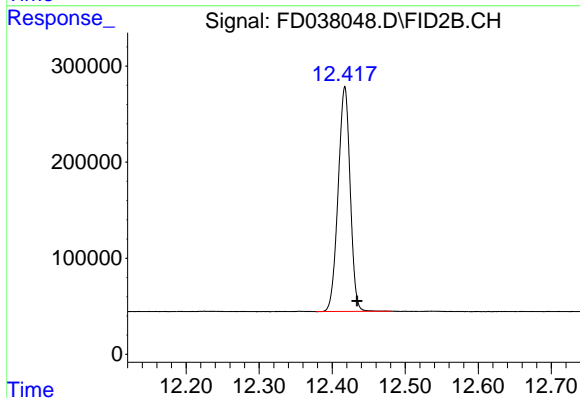
#8 n-Octadecane (C18)

R.T.: 11.114 min
Delta R.T.: -0.016 min
Response: 2760803
Conc: 20.89 ug/ml



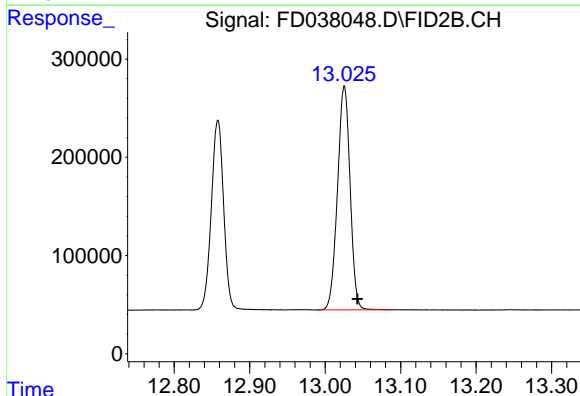
#9 ortho-Terphenyl (SURR)

R.T.: 11.422 min
Delta R.T.: -0.017 min
Response: 2868113
Conc: 20.21 ug/ml



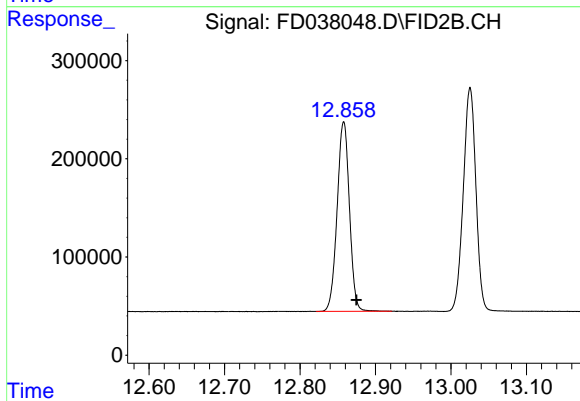
#10 n-Eicosane (C20)

R.T.: 12.417 min
Delta R.T.: -0.017 min
Response: 2676255
Conc: 20.28 ug/ml



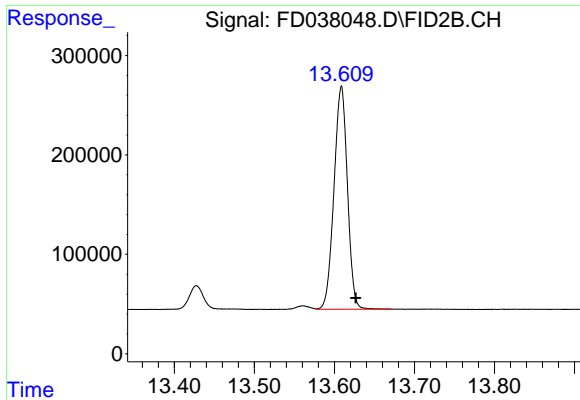
#11 n-Heneicosane (C21)

R.T.: 13.025 min
Delta R.T.: -0.017 min
Response: 2647224
Conc: 19.95 ug/ml



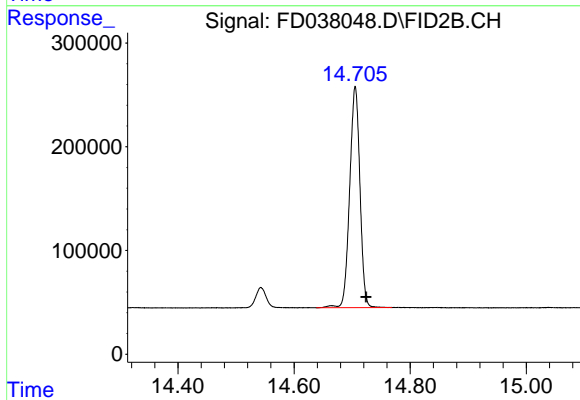
#12 1-chlorooctadecane (SURR)

R.T.: 12.858 min
Delta R.T.: -0.017 min
Response: 2192294
Conc: 19.66 ug/ml



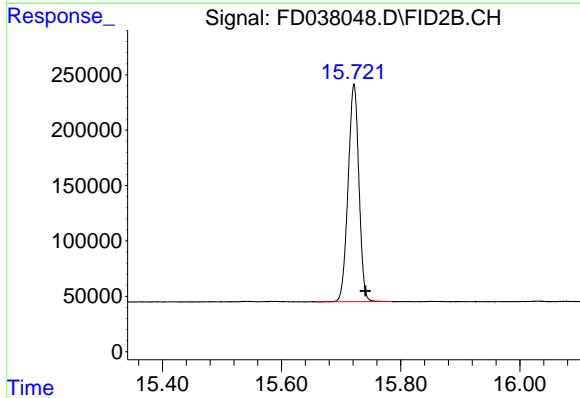
#13 n-Docosane (C22)

R.T.: 13.609 min
Delta R.T.: -0.018 min
Response: 2615376
Conc: 19.95 ug/ml



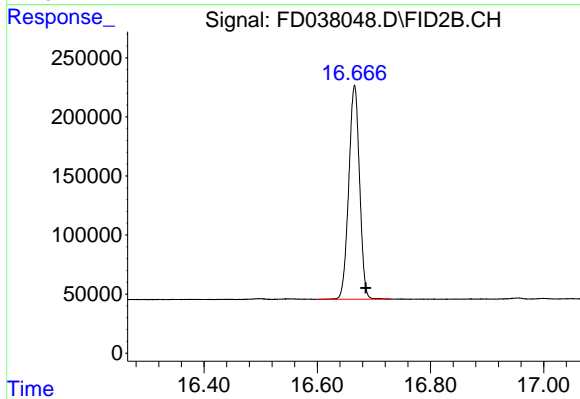
#14 n-Tetracosane (C24)

R.T.: 14.705 min
Delta R.T.: -0.019 min
Response: 2609888
Conc: 20.00 ug/ml



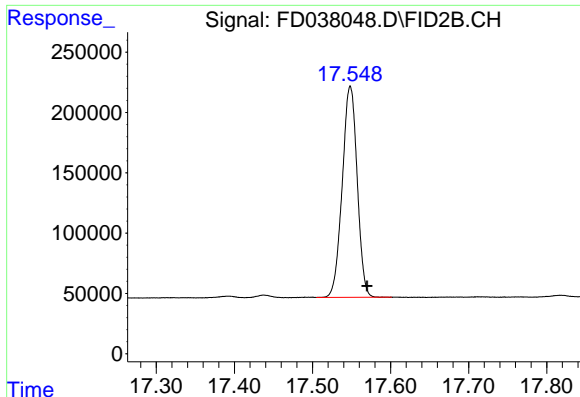
#15 n-Hexacosane (C26)

R.T.: 15.722 min
Delta R.T.: -0.019 min
Response: 2471085
Conc: 19.47 ug/ml



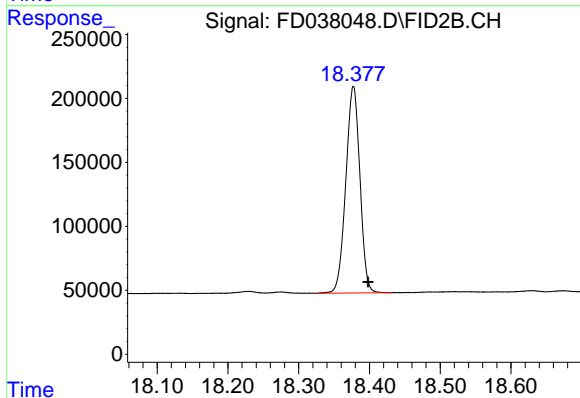
#16 n-Octacosane (C28)

R.T.: 16.666 min
Delta R.T.: -0.020 min
Response: 2402881
Conc: 19.36 ug/ml



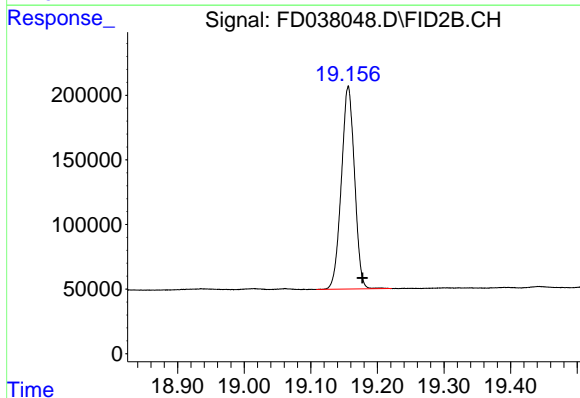
#17 n-Tricontane (C30)

R.T.: 17.548 min
Delta R.T.: -0.021 min
Response: 2326216
Conc: 19.33 ug/ml



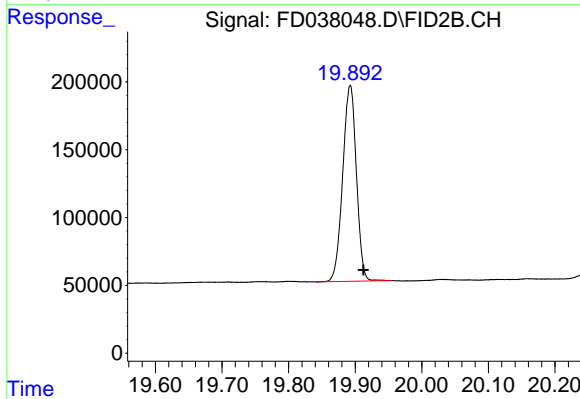
#18 n-Dotriacontane (C32)

R.T.: 18.377 min
Delta R.T.: -0.021 min
Response: 2240049
Conc: 19.57 ug/ml



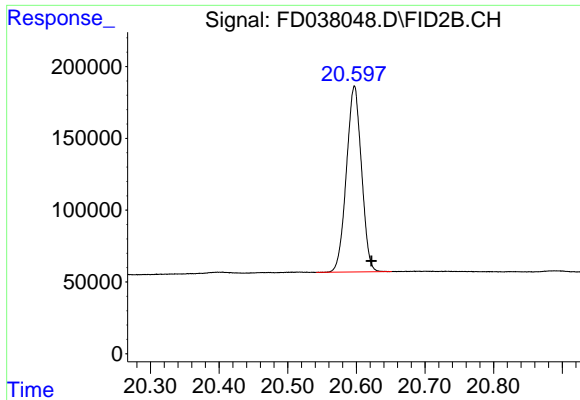
#19 n-Tetratriacontane (C34)

R.T.: 19.156 min
Delta R.T.: -0.021 min
Response: 2161178
Conc: 19.99 ug/ml



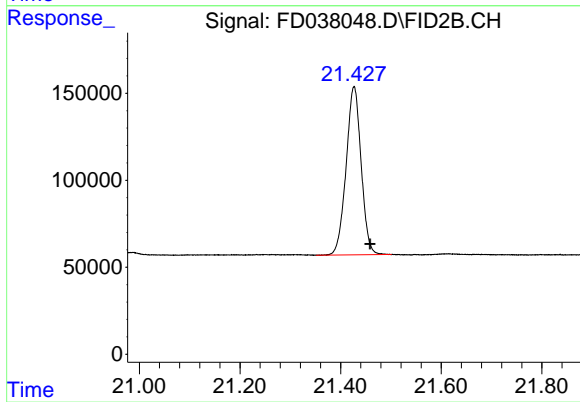
#20 n-Hexatriacontane (C36)

R.T.: 19.892 min
Delta R.T.: -0.020 min
Response: 2060294
Conc: 20.63 ug/ml



#21 n-Octatriacontane (C38)

R.T.: 20.597 min
Delta R.T.: -0.025 min
Response: 1973753
Conc: 21.49 ug/ml



#22 n-Tetracontane (C40)

R.T.: 21.427 min
Delta R.T.: -0.032 min
Response: 2001483
Conc: 21.04 ug/ml