

Data Path : Z:\pestpcbsrv\HPCHEM1\FID\_D\Data\FD070120AL\  
 Data File : FD033859.D  
 Signal(s) : FID2B.CH  
 Acq On : 02 Jul 2020 00:07  
 Operator : DD\AJ  
 Sample : L2814-16DL 5X  
 Misc :  
 ALS Vial : 67 Sample Multiplier: 1

Instrument :  
 FID\_D  
 ClientSampleId :  
 PL-02-063020-1DL

Integration File: autoint1.e  
 Quant Time: Jul 02 02:46:08 2020  
 Quant Method : Z:\pestpcbsrv\HPCHEM1\FID\_D\methods\Alaphatic EPH 061820.M  
 Quant Title : GC Extractables  
 QLast Update : Fri Jun 19 09:06:59 2020  
 Response via : Initial Calibration  
 Integrator: ChemStation 6890 Scale Mode: Large solvent peaks clipped

Volume Inj. : 1 ul  
 Signal Phase : Rxi-1ms  
 Signal Info : 20M x 0.18mm x 0.18um

Compound	R.T.	Response	Conc Units
System Monitoring Compounds			
9) S ortho-Terphenyl (SURR)	11.454	954889	6.681 ug/ml
Spiked Amount 50.000		Recovery =	13.36%
12) S 1-chlorooctadecane (S...	12.885	786338	6.688 ug/ml
Spiked Amount 50.000		Recovery =	13.38%
Target Compounds			
10) T n-Eicosane (C20)	12.511f	155328	1.141 ug/ml

(f)=RT Delta > 1/2 Window

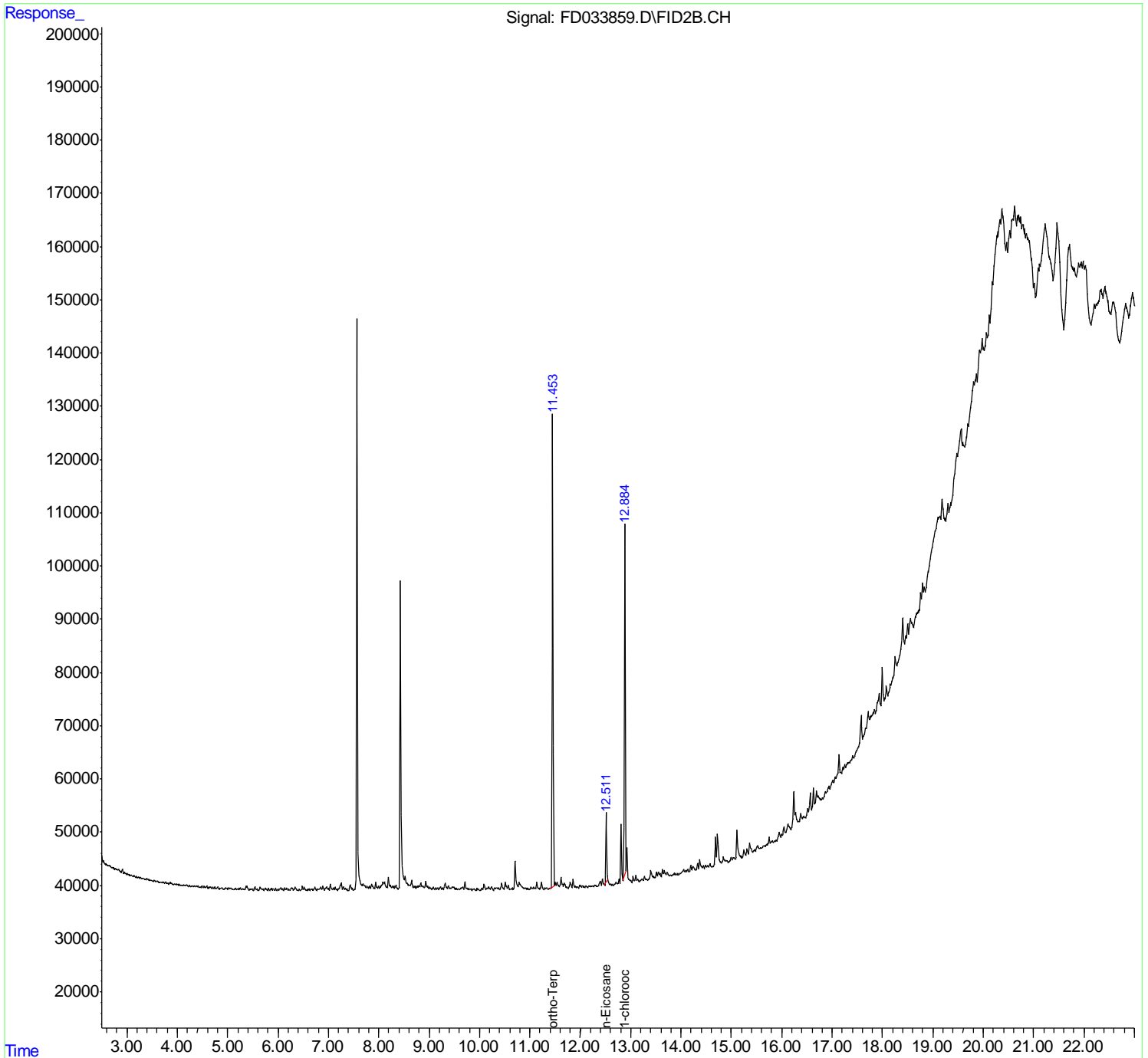
(m)=manual int.

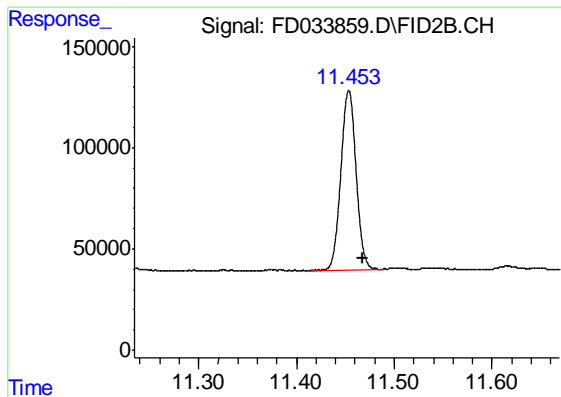
Data Path : Z:\pestpcbsrv\HPCHEM1\FID\_D\Data\FD070120AL\  
 Data File : FD033859.D  
 Signal(s) : FID2B.CH  
 Acq On : 02 Jul 2020 00:07  
 Operator : DD\AJ  
 Sample : L2814-16DL 5X  
 Misc :  
 ALS Vial : 67 Sample Multiplier: 1

Instrument :  
 FID\_D  
 ClientSampled :  
 PL-02-063020-1DL

Integration File: autoint1.e  
 Quant Time: Jul 02 02:46:08 2020  
 Quant Method : Z:\pestpcbsrv\HPCHEM1\FID\_D\methods\Alaphatic EPH 061820.M  
 Quant Title : GC Extractables  
 QLast Update : Fri Jun 19 09:06:59 2020  
 Response via : Initial Calibration  
 Integrator: ChemStation 6890 Scale Mode: Large solvent peaks clipped

Volume Inj. : 1 ul  
 Signal Phase : Rxi-1ms  
 Signal Info : 20M x 0.18mm x 0.18um

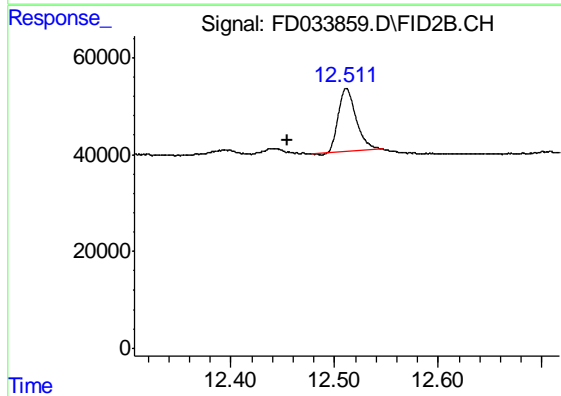




#9 ortho-Terphenyl (SURR)

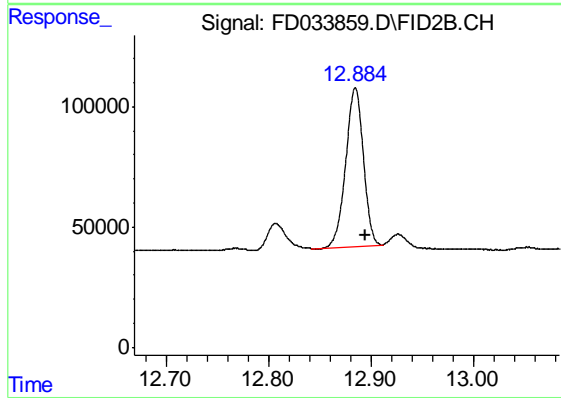
R.T.: 11.454 min  
Delta R.T.: -0.014 min  
Response: 954889  
Conc: 6.68 ug/ml

Instrument :  
FID\_D  
ClientSampled :  
PL-02-063020-1DL



#10 n-Eicosane (C20)

R.T.: 12.511 min  
Delta R.T.: 0.057 min  
Response: 155328  
Conc: 1.14 ug/ml



#12 1-chlorooctadecane (SURR)

R.T.: 12.885 min  
Delta R.T.: -0.010 min  
Response: 786338  
Conc: 6.69 ug/ml