

Data Path : Z:\pestpcbsrv\HPCHEM1\FID_D\Data\FD070224AR\
 Data File : FD047978.D
 Signal(s) : FID2B.ch
 Acq On : 02 Jul 2024 20:12
 Operator : YP/AJ
 Sample : 20 PPM AROMATIC HC STD
 Misc :
 ALS Vial : 52 Sample Multiplier: 1

Instrument :
 FID_D
 ClientSampleId :
 20 PPM AROMATIC HC STD

Integration File: autoint1.e
 Quant Time: Jul 03 04:59:07 2024
 Quant Method : Z:\pestpcbsrv\HPCHEM1\FID_D\methods\Aromatic EPH 061724.M
 Quant Title : GC Extractables
 QLast Update : Mon Jun 17 13:47:07 2024
 Response via : Initial Calibration
 Integrator: ChemStation

Volume Inj. : 1 µl
 Signal Phase : Rxi-1ms
 Signal Info : 20M x 0.18mm x 0.18µm

Compound	R.T.	Response	Conc Units

System Monitoring Compounds			
4) S 2-Bromonaphthalene (S... Spiked Amount 50.000	7.413	2968699	20.413 ug/ml Recovery = 40.83%
6) S 2-Fluorobiphenyl (SURR) Spiked Amount 50.000 Range 0 - 131	8.264	1929610	19.810 ug/ml Recovery = 39.62%
11) S ortho-Terphenyl (SURR) Spiked Amount 50.000	11.301	3292782	19.594 ug/ml Recovery = 39.19%
Target Compounds			
1) T 1,2,3-Trimethylbenzen...	4.231	3335177	20.751 ug/ml
2) T Naphthalene (C11.7)	5.752	3461049	20.438 ug/ml
3) T 2-Methylnaphthalene (...)	6.800	3468926	20.146 ug/ml
5) T Acenaphthylene (C15.06)	8.067	3381456	20.132 ug/ml
7) T Acenaphthene (C15.5)	8.361	3420109	20.178 ug/ml
8) T Fluorene (C16.55)	9.140	3268703	19.686 ug/ml
9) T Phenanthrene (C19.36)	10.528	3212992	19.626 ug/ml
10) T Anthracene (C19.43)	10.603	3166332	19.468 ug/ml
12) T Fluoranthene (C21.85)	12.333	3147287	19.113 ug/ml
13) T Pyrene (C20.8)	12.626	3132108	19.209 ug/ml
14) T Benzo[a]anthracene (C...)	14.494	2854320	18.607 ug/ml
15) T Chrysene (C27.41)	14.536	3038351	18.578 ug/ml
16) T benzo[b]fluoranthene ...	16.040	2933104	19.090 ug/ml
17) T Bnezo[k]fluoranthene ...	16.072	2870048	19.161 ug/ml
18) T Benzo[a]pyrene (C31.34)	16.416	2886892	18.945 ug/ml
19) T Indeno[1,2,3-cd]pyren...	17.780	2436119	18.527 ug/ml
20) T Dibenz[a,h]anthracene...	17.820	2987192	18.861 ug/ml
21) T Benzo[g,h,i]perylene ...	18.030	2921409	19.433 ug/ml

(f)=RT Delta > 1/2 Window

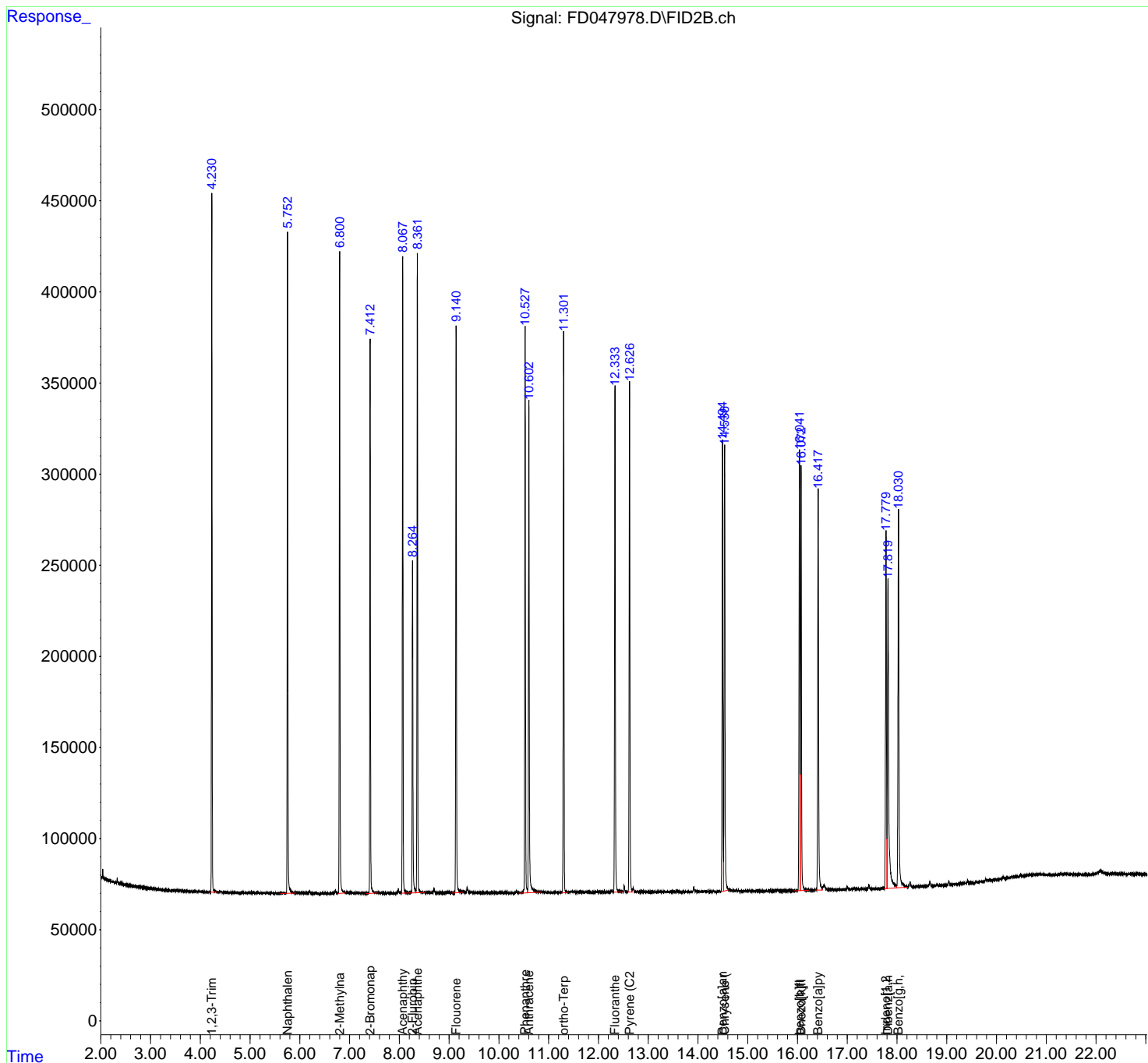
(m)=manual int.

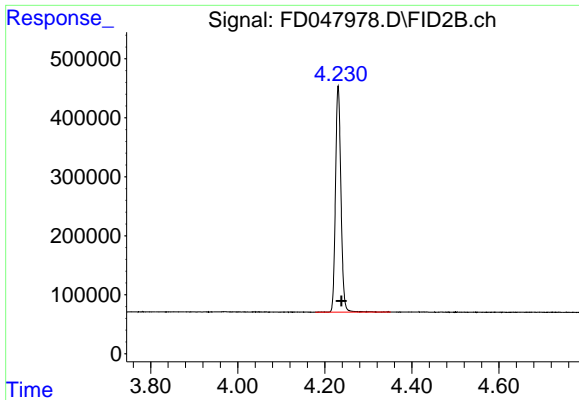
Data Path : Z:\pestpcbsrv\HPCHEM1\FID_D\Data\FD070224AR\
 Data File : FD047978.D
 Signal(s) : FID2B.ch
 Acq On : 02 Jul 2024 20:12
 Operator : YP/AJ
 Sample : 20 PPM AROMATIC HC STD
 Misc :
 ALS Vial : 52 Sample Multiplier: 1

Instrument :
 FID_D
 ClientSampleId :
 20 PPM AROMATIC HC STD

Integration File: autoint1.e
 Quant Time: Jul 03 04:59:07 2024
 Quant Method : Z:\pestpcbsrv\HPCHEM1\FID_D\methods\Aromatic EPH 061724.M
 Quant Title : GC Extractables
 QLast Update : Mon Jun 17 13:47:07 2024
 Response via : Initial Calibration
 Integrator: ChemStation

Volume Inj. : 1 µl
 Signal Phase : Rxi-1ms
 Signal Info : 20M x 0.18mm x 0.18µm

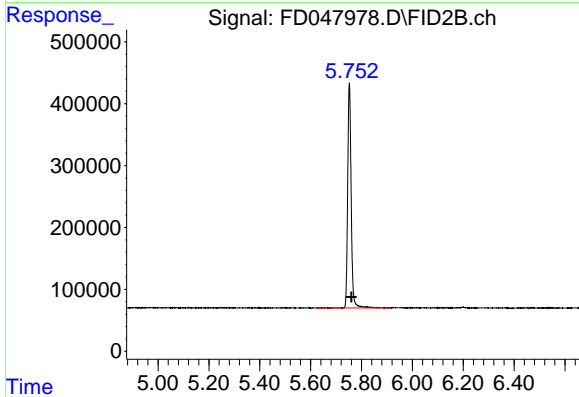




#1 1,2,3-Trimethylbenzene (C10.1)

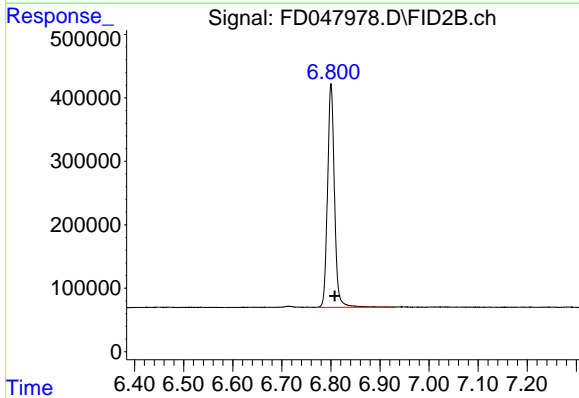
R.T.: 4.231 min
 Delta R.T.: -0.007 min
 Response: 3335177
 Conc: 20.75 ug/ml

Instrument : FID_D
 ClientSampleId : 20 PPM AROMATIC HC STD



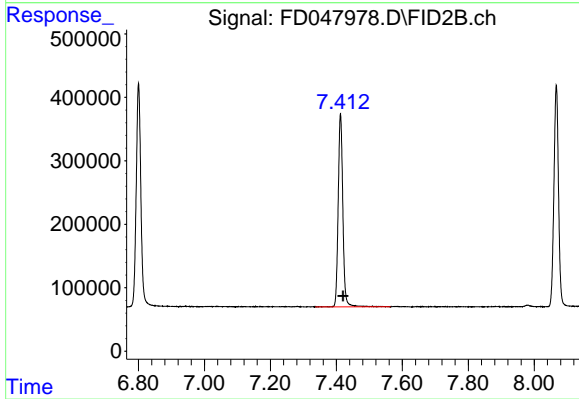
#2 Naphthalene (C11.7)

R.T.: 5.752 min
 Delta R.T.: -0.008 min
 Response: 3461049
 Conc: 20.44 ug/ml



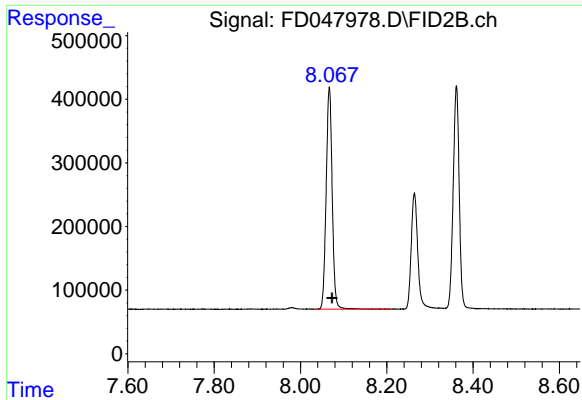
#3 2-Methylnaphthalene (C12.89)

R.T.: 6.800 min
 Delta R.T.: -0.008 min
 Response: 3468926
 Conc: 20.15 ug/ml



#4 2-Bromonaphthalene (SURR)

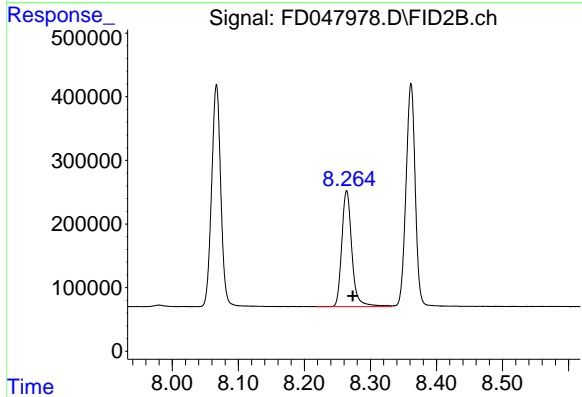
R.T.: 7.413 min
 Delta R.T.: -0.008 min
 Response: 2968699
 Conc: 20.41 ug/ml



#5 Acenaphthylene (C15.06)

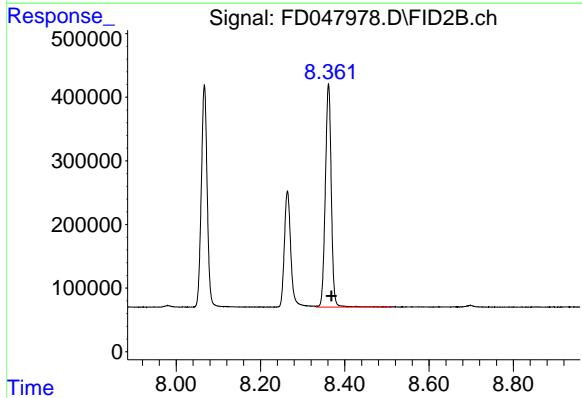
R.T.: 8.067 min
 Delta R.T.: -0.007 min
 Response: 3381456
 Conc: 20.13 ug/ml

Instrument :
 FID_D
 ClientSampleId :
 20 PPM AROMATIC HC STD



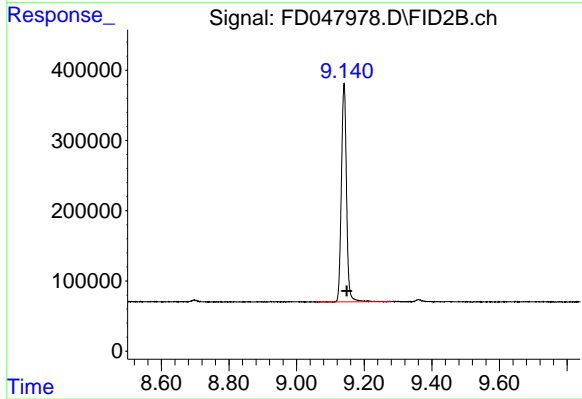
#6 2-Fluorobiphenyl (SURR)

R.T.: 8.264 min
 Delta R.T.: -0.009 min
 Response: 1929610
 Conc: 19.81 ug/ml



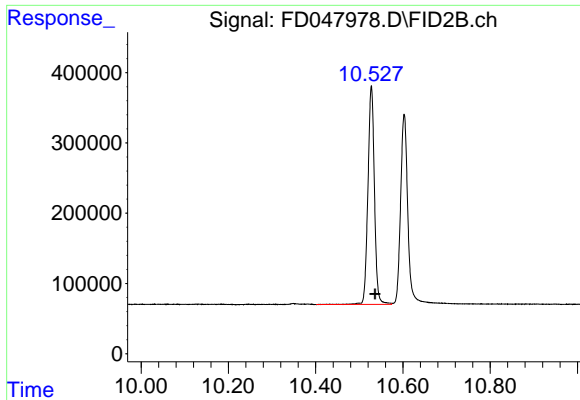
#7 Acenaphthene (C15.5)

R.T.: 8.361 min
 Delta R.T.: -0.007 min
 Response: 3420109
 Conc: 20.18 ug/ml



#8 Fluorene (C16.55)

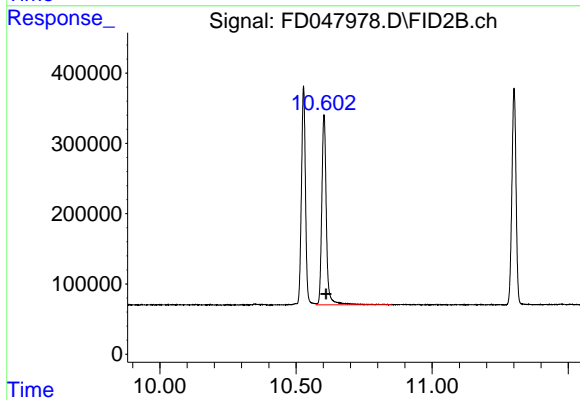
R.T.: 9.140 min
 Delta R.T.: -0.008 min
 Response: 3268703
 Conc: 19.69 ug/ml



#9 Phenanthrene (C19.36)

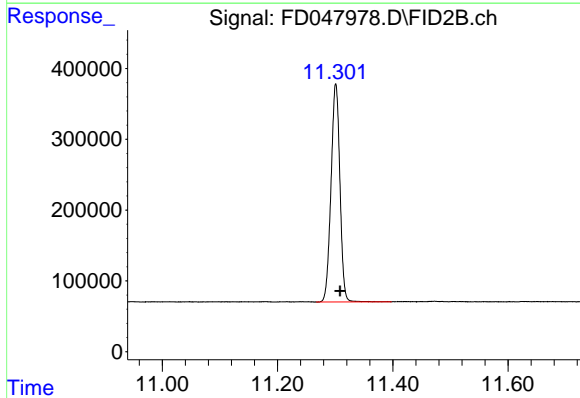
R.T.: 10.528 min
Delta R.T.: -0.008 min
Response: 3212992
Conc: 19.63 ug/ml

Instrument :
FID_D
ClientSampleId :
20 PPM AROMATIC HC STD



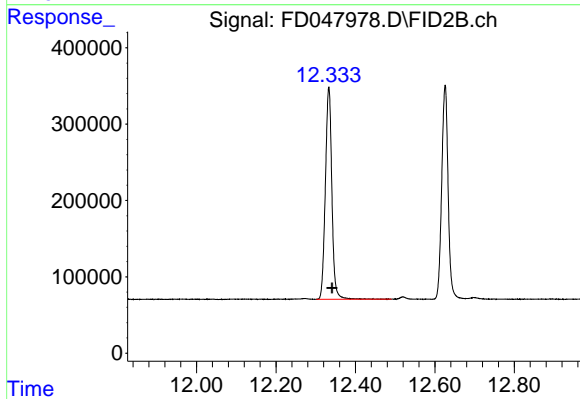
#10 Anthracene (C19.43)

R.T.: 10.603 min
Delta R.T.: -0.008 min
Response: 3166332
Conc: 19.47 ug/ml



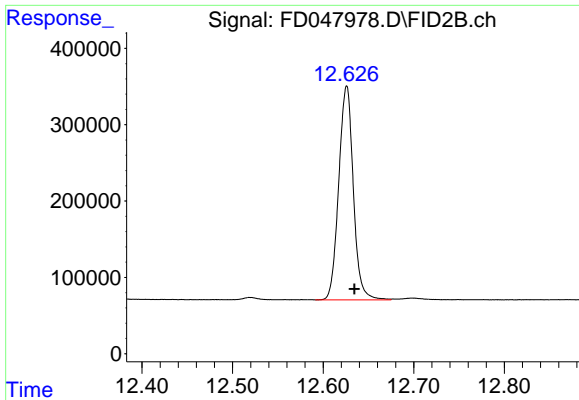
#11 ortho-Terphenyl (SURR)

R.T.: 11.301 min
Delta R.T.: -0.007 min
Response: 3292782
Conc: 19.59 ug/ml



#12 Fluoranthene (C21.85)

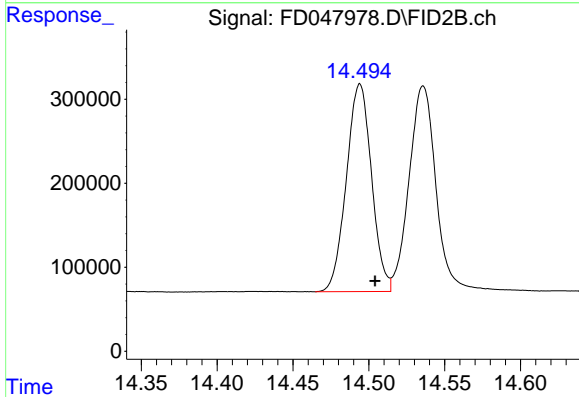
R.T.: 12.333 min
Delta R.T.: -0.008 min
Response: 3147287
Conc: 19.11 ug/ml



#13 Pyrene (C20.8)

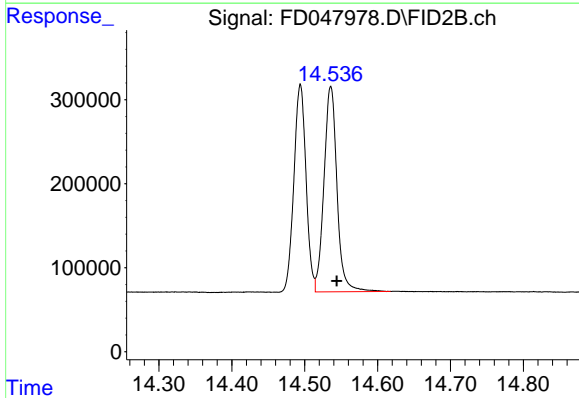
R.T.: 12.626 min
Delta R.T.: -0.009 min
Response: 3132108
Conc: 19.21 ug/ml

Instrument :
FID_D
ClientSampleId :
20 PPM AROMATIC HC STD



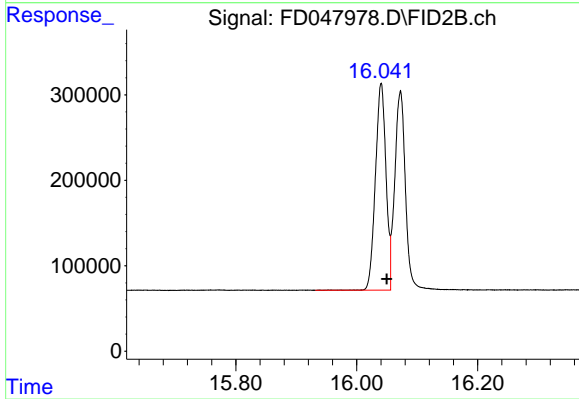
#14 Benzo[a]anthracene (C26.37)

R.T.: 14.494 min
Delta R.T.: -0.010 min
Response: 2854320
Conc: 18.61 ug/ml



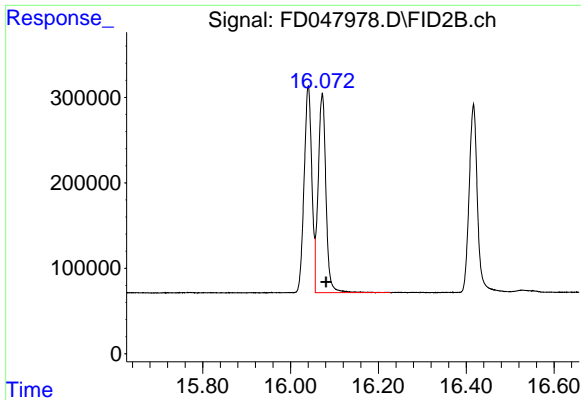
#15 Chrysene (C27.41)

R.T.: 14.536 min
Delta R.T.: -0.008 min
Response: 3038351
Conc: 18.58 ug/ml



#16 benzo[b]fluoranthene (C30.41)

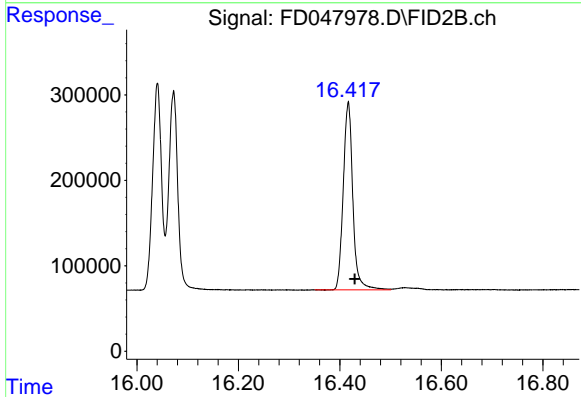
R.T.: 16.040 min
Delta R.T.: -0.009 min
Response: 2933104
Conc: 19.09 ug/ml



#17 Bnezo[k]fluoranthene (C30.14)

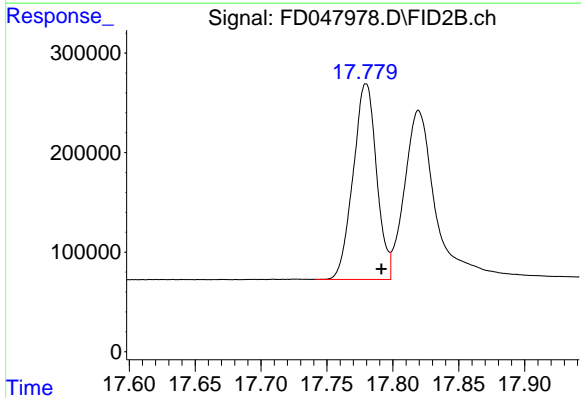
R.T.: 16.072 min
 Delta R.T.: -0.009 min
 Response: 2870048
 Conc: 19.16 ug/ml

Instrument :
 FID_D
 ClientSampleId :
 20 PPM AROMATIC HC STD



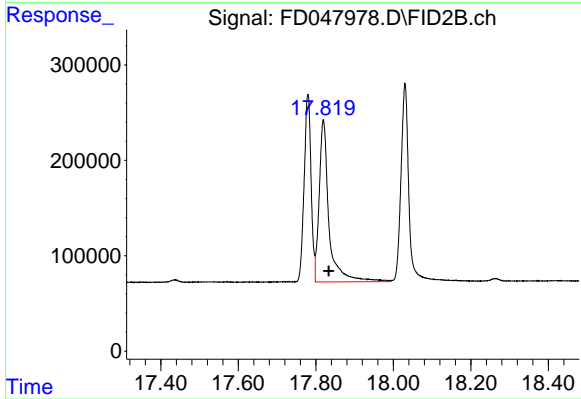
#18 Benzo[a]pyrene (C31.34)

R.T.: 16.416 min
 Delta R.T.: -0.013 min
 Response: 2886892
 Conc: 18.94 ug/ml



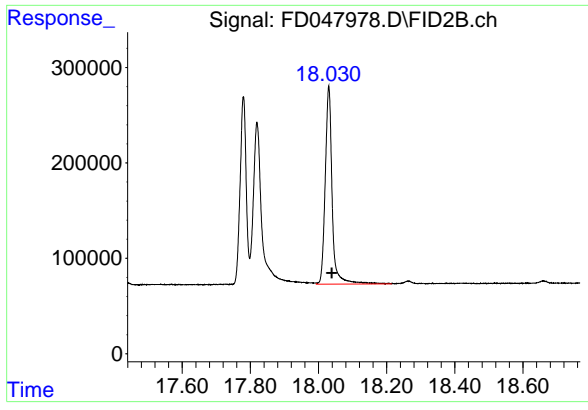
#19 Indeno[1,2,3-cd]pyrene (C35.01)

R.T.: 17.780 min
 Delta R.T.: -0.012 min
 Response: 2436119
 Conc: 18.53 ug/ml



#20 Dibenz[a,h]anthracene (C30.36)

R.T.: 17.820 min
 Delta R.T.: -0.014 min
 Response: 2987192
 Conc: 18.86 ug/ml



#21 Benzo[g,h,i]perylene (C34.01)

R.T.: 18.030 min

Delta R.T.: -0.009 min

Response: 2921409

Conc: 19.43 ug/ml

Instrument :

FID_D

ClientSampleId :

20 PPM AROMATIC HC STD