

Data Path : Z:\pestpcbsrv\HPCHEM1\FID_D\Data\FD070318AR\
 Data File : FD024861.D
 Signal(s) : FID2B.CH
 Acq On : 04 Jul 2018 1:20
 Operator : UA/AJ
 Sample : J3840-14
 Misc :
 ALS Vial : 67 Sample Multiplier: 1

Integration File: autoint1.e
 Quant Time: Jul 04 04:10:35 2018
 Quant Method : Z:\pestpcbsrv\HPCHEM1\FID_D\methods\Aromatic EPH 062118.M
 Quant Title : GC Extractables
 QLast Update : Fri Jun 22 09:02:19 2018
 Response via : Initial Calibration
 Integrator: ChemStation 6890 Scale Mode: Large solvent peaks clipped

Volume Inj. : 1 µl
 Signal Phase : Rxi-1ms
 Signal Info : 20M x 0.18mm x 0.18µm

Compound	R.T.	Response	Conc Units

System Monitoring Compounds			
4) S 2-Bromonaphthalene (S...	7.475	4011206	43.849 ug/ml
Spiked Amount 50.000		Recovery =	87.70%
6) S 2-Fluorobiphenyl (SURR)	8.330	2825284	44.547 ug/ml
Spiked Amount 50.000 Range 0 - 131		Recovery =	89.09%
11) S ortho-Terphenyl (SURR)	11.380	3532858	35.203 ug/ml
Spiked Amount 50.000		Recovery =	70.41%

Target Compounds

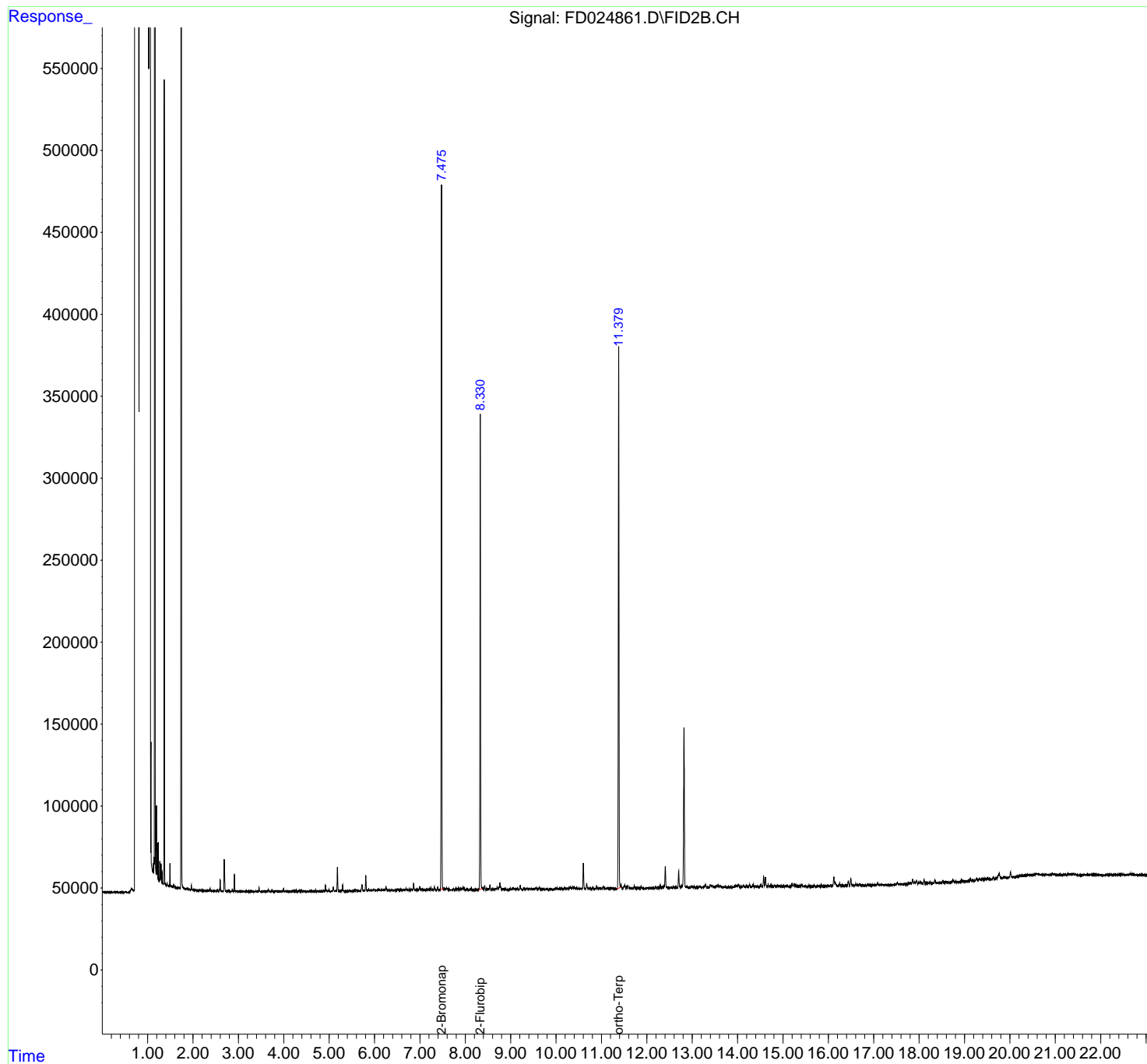
(f)=RT Delta > 1/2 Window

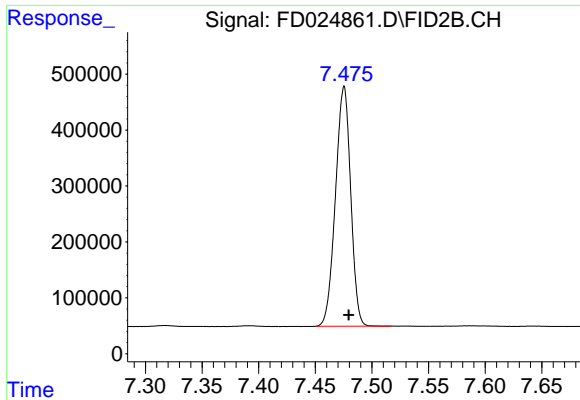
(m)=manual int.

Data Path : Z:\pestpcbsrv\HPCHEM1\FID_D\Data\FD070318AR\
Data File : FD024861.D
Signal(s) : FID2B.CH
Acq On : 04 Jul 2018 1:20
Operator : UA/AJ
Sample : J3840-14
Misc :
ALS Vial : 67 Sample Multiplier: 1

Integration File: autoint1.e
Quant Time: Jul 04 04:10:35 2018
Quant Method : Z:\pestpcbsrv\HPCHEM1\FID_D\methods\Aromatic EPH 062118.M
Quant Title : GC Extractables
QLast Update : Fri Jun 22 09:02:19 2018
Response via : Initial Calibration
Integrator: ChemStation 6890 Scale Mode: Large solvent peaks clipped

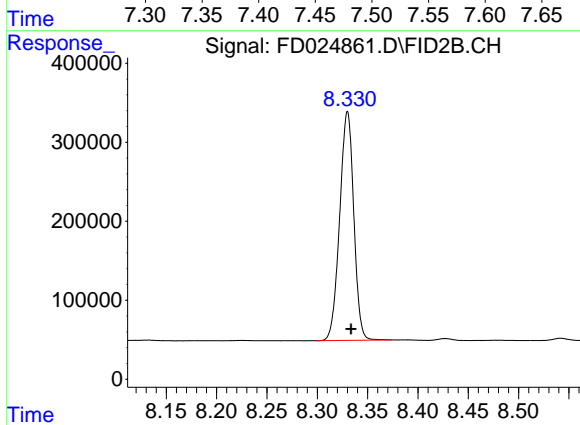
Volume Inj. : 1 µl
Signal Phase : Rxi-1ms
Signal Info : 20M x 0.18mm x 0.18µm





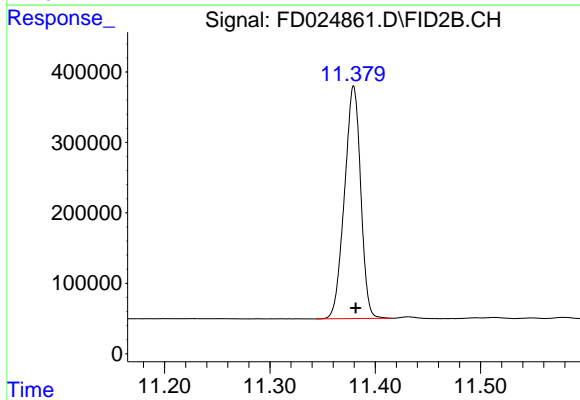
#4 2-Bromonaphthalene (SURR)

R.T.: 7.475 min
Delta R.T.: -0.004 min
Response: 4011206
Conc: 43.85 ug/ml



#6 2-Fluorobiphenyl (SURR)

R.T.: 8.330 min
Delta R.T.: -0.004 min
Response: 2825284
Conc: 44.55 ug/ml



#11 ortho-Terphenyl (SURR)

R.T.: 11.380 min
Delta R.T.: -0.002 min
Response: 3532858
Conc: 35.20 ug/ml