

Data Path : Z:\pestpcbsrv\HPCHEM1\FID_D\Data\FD070721AL\
 Data File : FD038095.D
 Signal(s) : FID2B.CH
 Acq On : 07 Jul 2021 23:23
 Operator : DD\AJ
 Sample : PB137549BS
 Misc :
 ALS Vial : 66 Sample Multiplier: 1

Instrument :
 FID_D
 ClientSampleId :
 PB137549BS

Manual Integrations
 APPROVED

mohammad
 7/8/2021 4:43:45 PM

Integration File: autoint1.e
 Quant Time: Jul 08 02:29:37 2021
 Quant Method : Z:\pestpcbsrv\HPCHEM1\FID_D\methods\Alaphatic EPH 070621.M
 Quant Title : GC Extractables
 QLast Update : Wed Jul 07 10:58:41 2021
 Response via : Initial Calibration
 Integrator: ChemStation 6890 Scale Mode: Large solvent peaks clipped

Volume Inj. : 1 ul
 Signal Phase : Rxi-1ms
 Signal Info : 20M x 0.18mm x 0.18um

Compound	R.T.	Response	Conc Units

System Monitoring Compounds			
9) S ortho-Terphenyl (SURR)	11.422	7023184	48.586 ug/ml
Spiked Amount	50.000	Recovery	= 97.17%
12) S 1-chlorooctadecane (S...	12.856	5613963	49.241 ug/ml
Spiked Amount	50.000	Recovery	= 98.48%
Target Compounds			
1) T n-Nonane (C9)	3.258	5643493	46.443 ug/ml
2) T n-Decane (C10)	4.303	6146882	50.256 ug/ml
3) T A~Naphthalene (C11.7)	5.864	7069909	51.718 ug/ml
4) T n-Dodecane (C12)	6.300	6565579	52.714 ug/ml
5) T A~2-methylnaphthalene...	6.914	6787842	49.280 ug/ml
6) T n-Tetradecane (C14)	8.087	6751699	52.530 ug/ml
7) T n-Hexadecane (C16)	9.679	6787760	52.380 ug/ml
8) T n-Octadecane (C18)	11.114	6988111	51.889 ug/ml
10) T n-Eicosane (C20)	12.417	6730766	50.111 ug/ml
11) T n-Heneicosane (C21)	13.025	6663451	49.046 ug/ml
13) T n-Docosane (C22)	13.609	6562331	48.772 ug/mlm
14) T n-Tetracosane (C24)	14.705	5951747	44.077 ug/mlm
15) T n-Hexacosane (C26)	15.721	6242126	47.377 ug/ml
16) T n-Octacosane (C28)	16.664	6103315	46.809 ug/ml
17) T n-Tricontane (C30)	17.549	5678565	44.435 ug/ml
18) T n-Dotriacontane (C32)	18.375	5286522	42.964 ug/ml
19) T n-Tetratriacontane (C34)	19.154	4811086	41.084 ug/ml
20) T n-Hexatriacontane (C36)	19.888	4318226	39.541 ug/ml
21) T n-Octatriacontane (C38)	20.593	3896597	38.688 ug/ml
22) T n-Tetracontane (C40)	21.422	3793104	38.782 ug/ml

(f)=RT Delta > 1/2 Window

(m)=manual int.

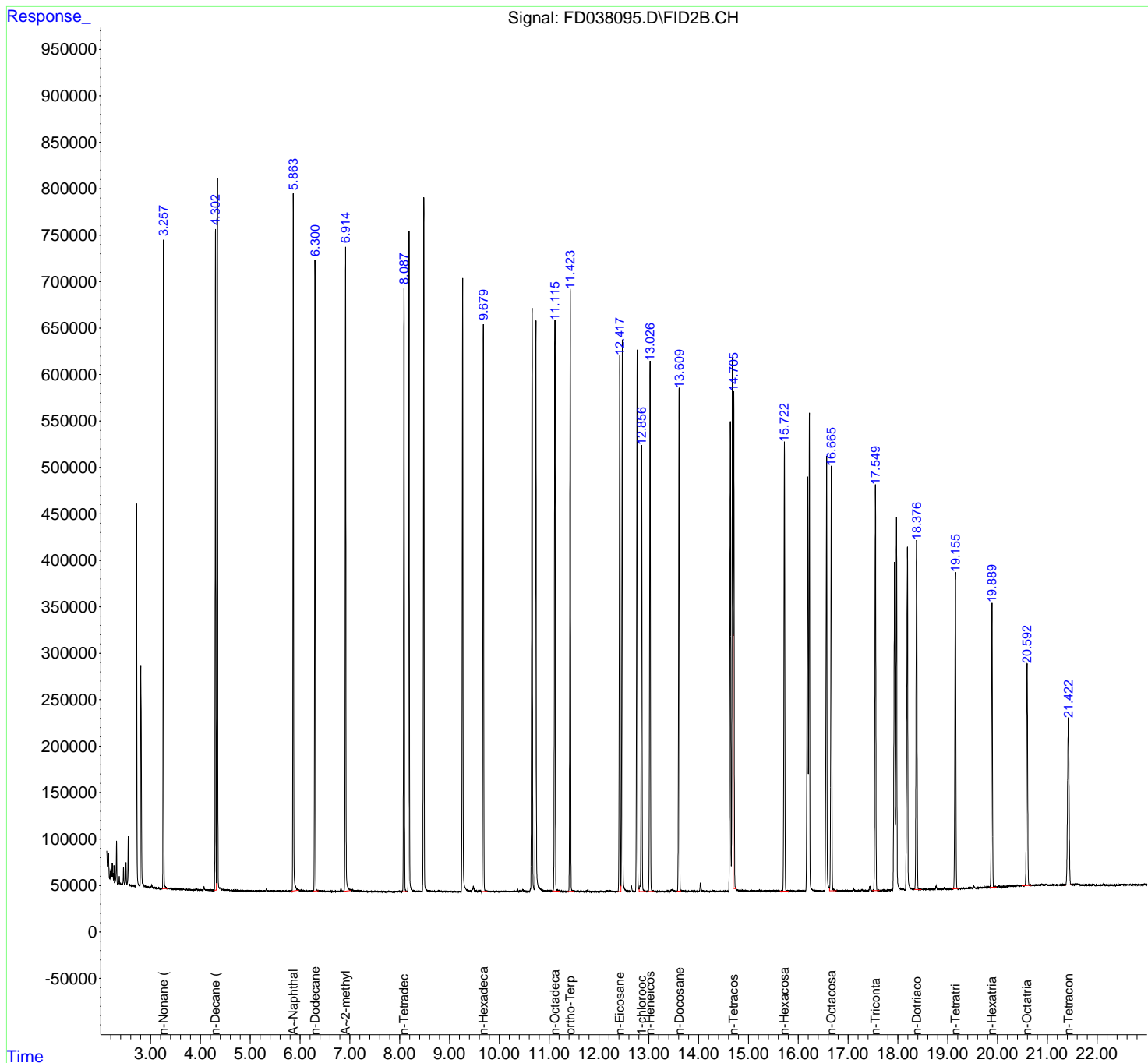
Data Path : Z:\pestpcbsrv\HPCHEM1\FID_D\Data\FD070721AL\
 Data File : FD038095.D
 Signal(s) : FID2B.CH
 Acq On : 07 Jul 2021 23:23
 Operator : DD\AJ
 Sample : PB137549BS
 Misc :
 ALS Vial : 66 Sample Multiplier: 1

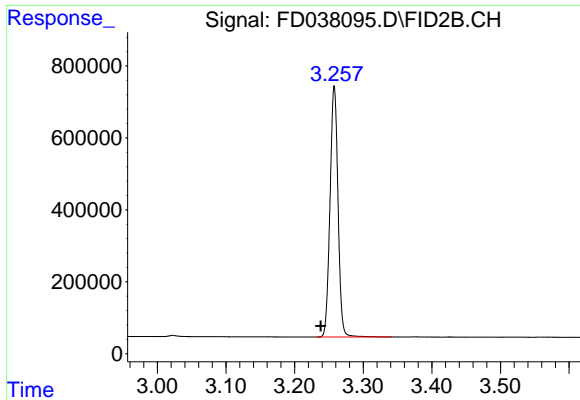
Instrument :
 FID_D
 Client Sampled :
 PB137549BS

Manual Integrations
 APPROVED
 mohammad
 7/8/2021 4:43:45 PM

Integration File: autoint1.e
 Quant Time: Jul 08 02:29:37 2021
 Quant Method : Z:\pestpcbsrv\HPCHEM1\FID_D\methods\Alaphatic EPH 070621.M
 Quant Title : GC Extractables
 QLast Update : Wed Jul 07 10:58:41 2021
 Response via : Initial Calibration
 Integrator: ChemStation 6890 Scale Mode: Large solvent peaks clipped

Volume Inj. : 1 ul
 Signal Phase : Rxi-1ms
 Signal Info : 20M x 0.18mm x 0.18um

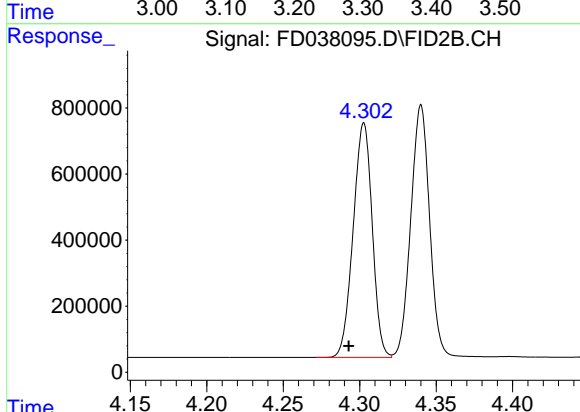




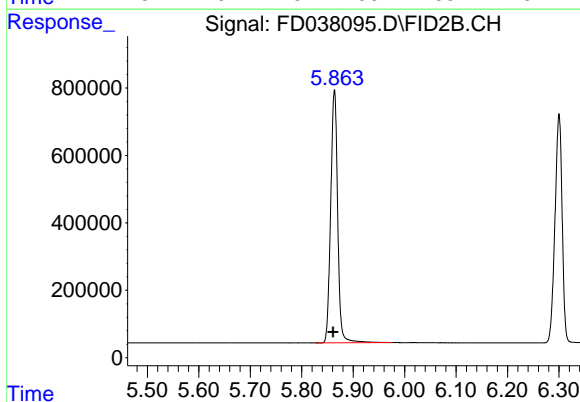
#1 n-Nonane (C9)
 R.T.: 3.258 min
 Delta R.T.: 0.020 min
 Response: 5643493
 Conc: 46.44 ug/ml

Instrument :
 FID_D
ClientSampleId :
 PB137549BS

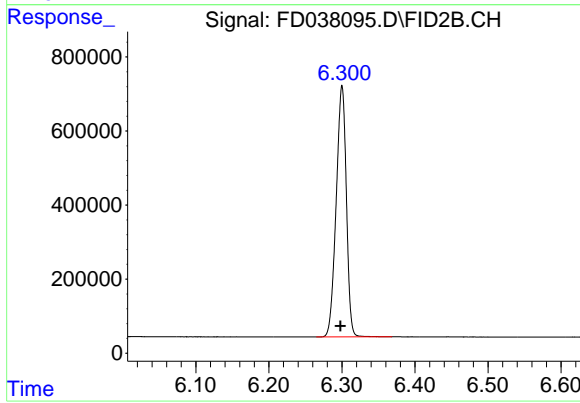
Manual Integrations
APPROVED
 mohammad
 7/8/2021 4:43:45 PM



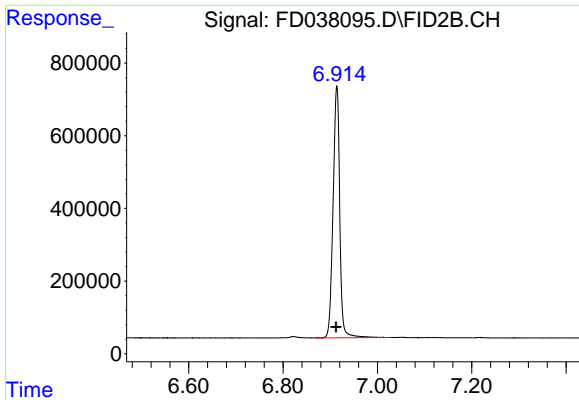
#2 n-Decane (C10)
 R.T.: 4.303 min
 Delta R.T.: 0.010 min
 Response: 6146882
 Conc: 50.26 ug/ml



#3 A~Naphthalene (C11.7)
 R.T.: 5.864 min
 Delta R.T.: 0.002 min
 Response: 7069909
 Conc: 51.72 ug/ml



#4 n-Dodecane (C12)
 R.T.: 6.300 min
 Delta R.T.: 0.002 min
 Response: 6565579
 Conc: 52.71 ug/ml

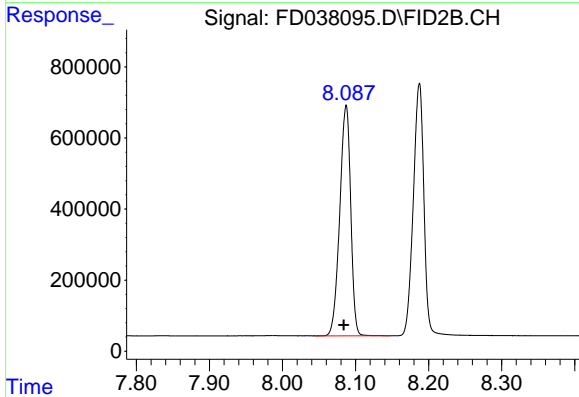


#5 A~2-methylnaphthalene (C12.89)

R.T.: 6.914 min
 Delta R.T.: 0.002 min
 Response: 6787842
 Conc: 49.28 ug/ml

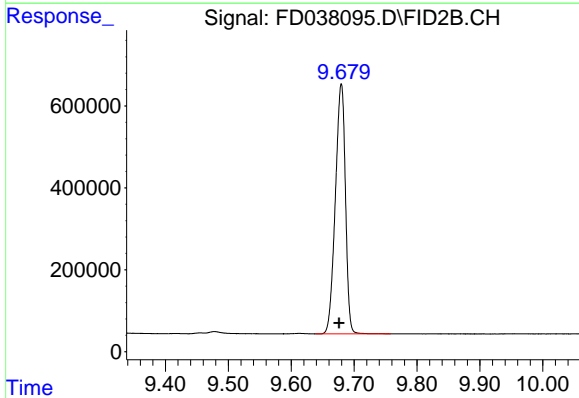
Instrument :
 FID_D
ClientSampled :
 PB137549BS

Manual Integrations
APPROVED
 mohammad
 7/8/2021 4:43:45 PM



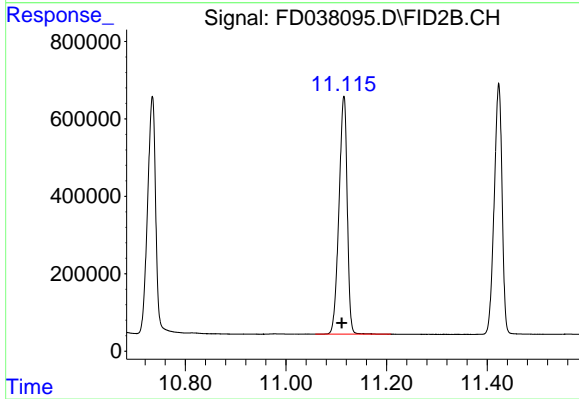
#6 n-Tetradecane (C14)

R.T.: 8.087 min
 Delta R.T.: 0.003 min
 Response: 6751699
 Conc: 52.53 ug/ml



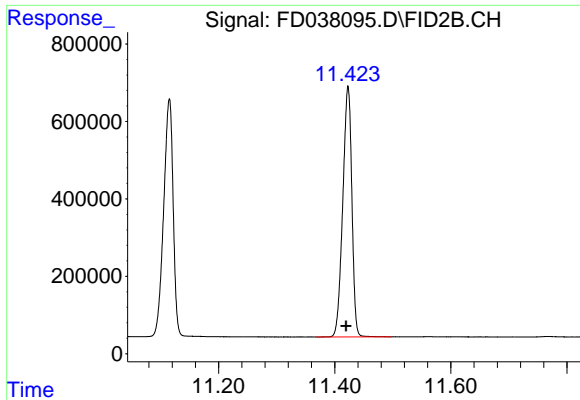
#7 n-Hexadecane (C16)

R.T.: 9.679 min
 Delta R.T.: 0.003 min
 Response: 6787760
 Conc: 52.38 ug/ml



#8 n-Octadecane (C18)

R.T.: 11.114 min
 Delta R.T.: 0.003 min
 Response: 6988111
 Conc: 51.89 ug/ml

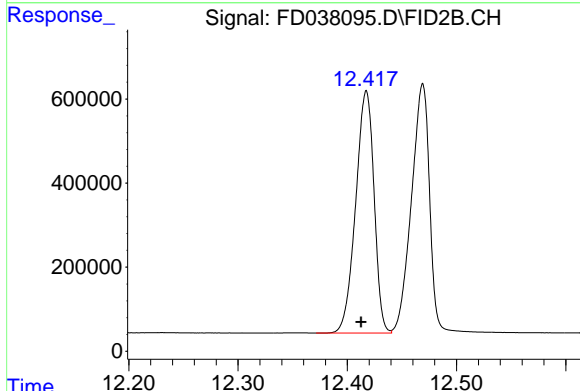


#9 ortho-Terphenyl (SURRE)

R.T.: 11.422 min
 Delta R.T.: 0.003 min
 Response: 7023184
 Conc: 48.59 ug/ml

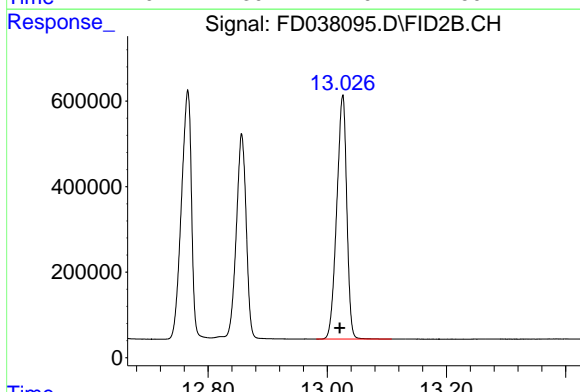
Instrument :
 FID_D
ClientSampled :
 PB137549BS

Manual Integrations
APPROVED
 mohammad
 7/8/2021 4:43:45 PM



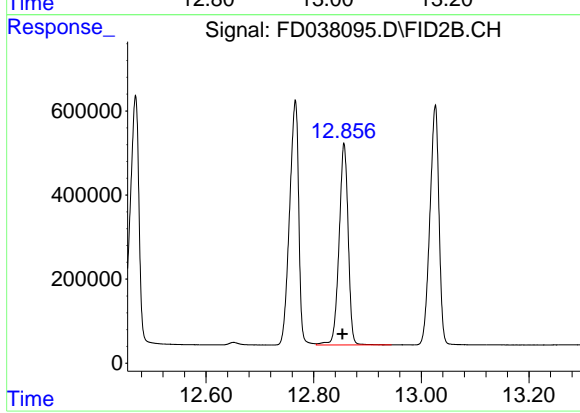
#10 n-Eicosane (C20)

R.T.: 12.417 min
 Delta R.T.: 0.004 min
 Response: 6730766
 Conc: 50.11 ug/ml



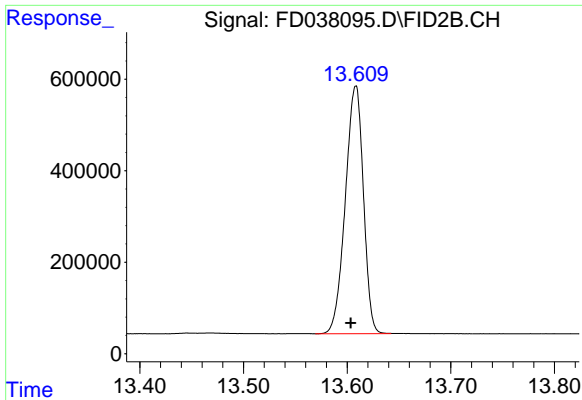
#11 n-Heneicosane (C21)

R.T.: 13.025 min
 Delta R.T.: 0.004 min
 Response: 6663451
 Conc: 49.05 ug/ml



#12 1-chlorooctadecane (SURRE)

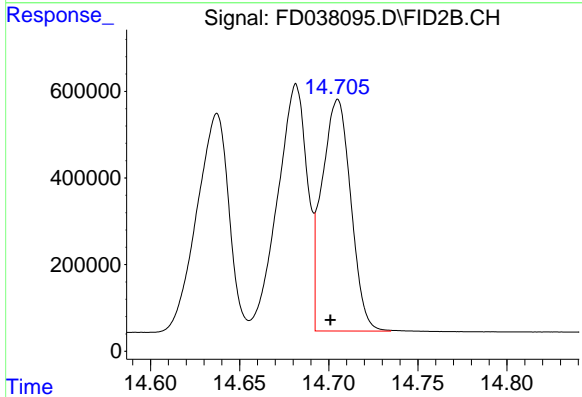
R.T.: 12.856 min
 Delta R.T.: 0.003 min
 Response: 5613963
 Conc: 49.24 ug/ml



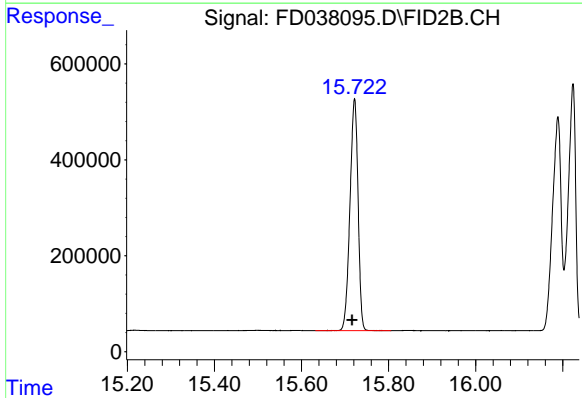
#13 n-Docosane (C22)
 R.T.: 13.609 min
 Delta R.T.: 0.005 min
 Response: 6562331
 Conc: 48.77 ug/ml m

Instrument :
 FID_D
 ClientSampleId :
 PB137549BS

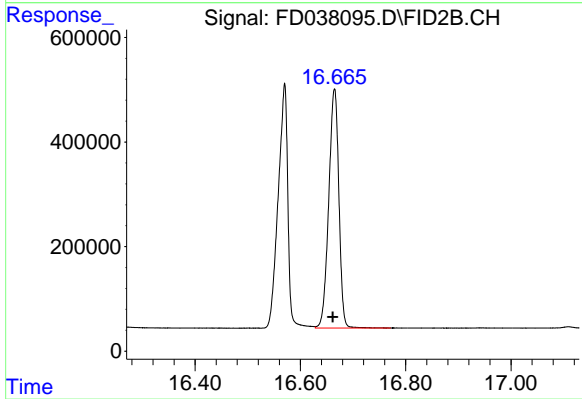
Manual Integrations
 APPROVED
 mohammad
 7/8/2021 4:43:45 PM



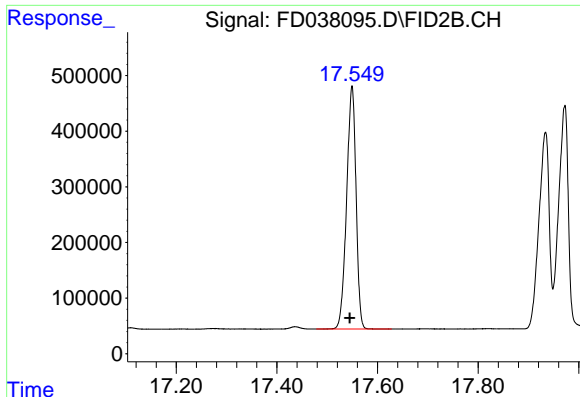
#14 n-Tetracosane (C24)
 R.T.: 14.705 min
 Delta R.T.: 0.004 min
 Response: 5951747
 Conc: 44.08 ug/ml m



#15 n-Hexacosane (C26)
 R.T.: 15.721 min
 Delta R.T.: 0.005 min
 Response: 6242126
 Conc: 47.38 ug/ml



#16 n-Octacosane (C28)
 R.T.: 16.664 min
 Delta R.T.: 0.003 min
 Response: 6103315
 Conc: 46.81 ug/ml



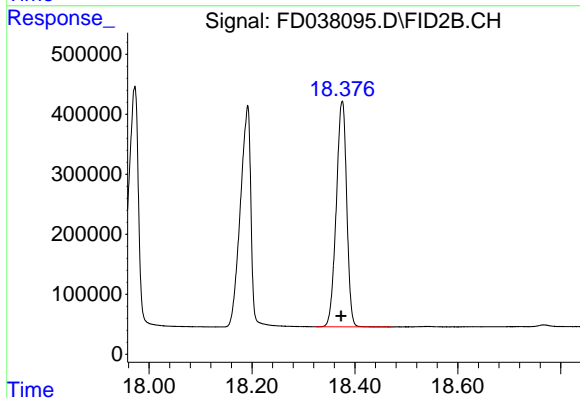
#17 n-Tricontane (C30)

R.T.: 17.549 min
 Delta R.T.: 0.004 min
 Response: 5678565
 Conc: 44.44 ug/ml

Instrument :
 FID_D
 ClientSampled :
 PB137549BS

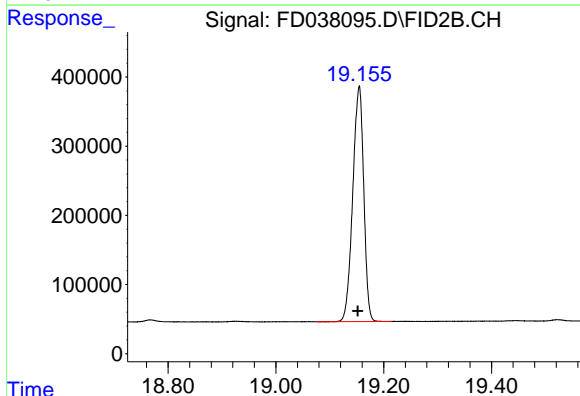
Manual Integrations
 APPROVED

mohammad
 7/8/2021 4:43:45 PM



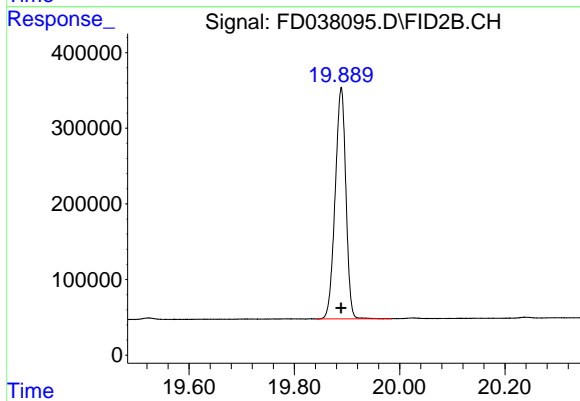
#18 n-Dotriacontane (C32)

R.T.: 18.375 min
 Delta R.T.: 0.001 min
 Response: 5286522
 Conc: 42.96 ug/ml



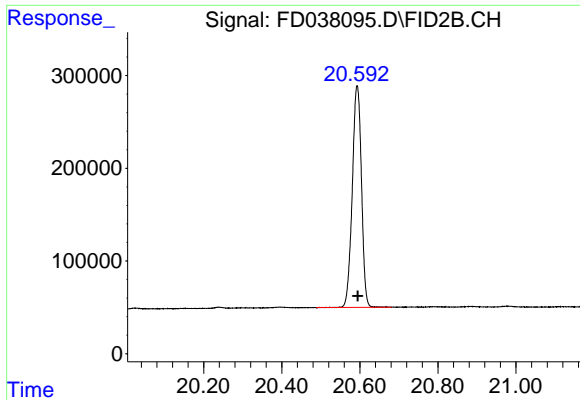
#19 n-Tetratriacontane (C34)

R.T.: 19.154 min
 Delta R.T.: 0.001 min
 Response: 4811086
 Conc: 41.08 ug/ml



#20 n-Hexatriacontane (C36)

R.T.: 19.888 min
 Delta R.T.: 0.000 min
 Response: 4318226
 Conc: 39.54 ug/ml



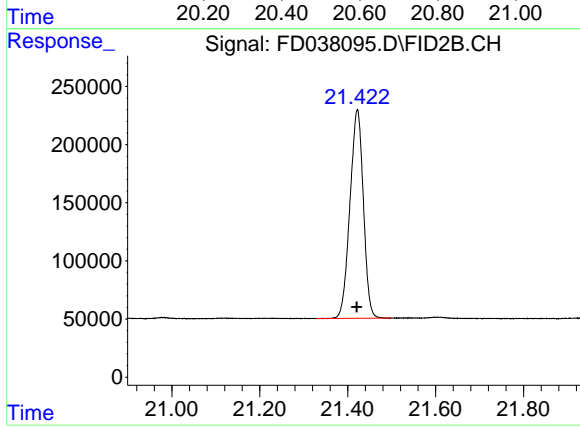
#21 n-Octatriacontane (C38)

R.T.: 20.593 min
Delta R.T.: -0.001 min
Response: 3896597
Conc: 38.69 ug/ml

Instrument :
FID_D
ClientSampled :
PB137549BS

Manual Integrations
APPROVED

mohammad
7/8/2021 4:43:45 PM



#22 n-Tetracontane (C40)

R.T.: 21.422 min
Delta R.T.: 0.001 min
Response: 3793104
Conc: 38.78 ug/ml