

Data Path : Z:\pestpcbsrv\HPCHEM1\FID\_D\Data\FD070919AL\  
 Data File : FD029695.D  
 Signal(s) : FID2B.CH  
 Acq On : 10 Jul 2019 3:23  
 Operator : DD\AJ  
 Sample : 100 PPM ALIPHATIC HC STD1  
 Misc :  
 ALS Vial : 2 Sample Multiplier: 1

Integration File: autoint1.e  
 Quant Time: Jul 10 07:36:48 2019  
 Quant Method : Z:\pestpcbsrv\HPCHEM1\FID\_D\methods\Alaphatic EPH 070919.M  
 Quant Title : GC Extractables  
 QLast Update : Wed Jul 10 07:33:17 2019  
 Response via : Initial Calibration  
 Integrator: ChemStation 6890 Scale Mode: Large solvent peaks clipped

Volume Inj. : 1 ul  
 Signal Phase : Rxi-1ms  
 Signal Info : 20M x 0.18mm x 0.18um

Compound	R.T.	Response	Conc Units
System Monitoring Compounds			
9) S ortho-Terphenyl (SURR)	11.605	14306633	101.842 ug/ml
Spiked Amount	50.000	Recovery	= 203.68%
12) S 1-chlorooctadecane (S...	13.026	11665135	101.094 ug/ml
Spiked Amount	50.000	Recovery	= 202.19%
Target Compounds			
1) T n-Nonane (C9)	3.394	12469925	101.159 ug/ml
2) T n-Decane (C10)	4.459	12697150	101.657 ug/ml
3) T A-Naphthalene (C11.7)	6.041	14493197	102.008 ug/ml
4) T n-Dodecane (C12)	6.469	12695714	102.072 ug/ml
5) T A~2-methylnaphthalene...	7.094	14580797	101.759 ug/ml
6) T n-Tetradecane (C14)	8.256	12849903	102.689 ug/ml
7) T n-Hexadecane (C16)	9.849	12946435	102.169 ug/ml
8) T n-Octadecane (C18)	11.285	13095006	101.191 ug/ml
10) T n-Eicosane (C20)	12.585	13233837	100.738 ug/ml
11) T n-Heneicosane (C21)	13.193	13197021	100.589 ug/ml
13) T n-Docosane (C22)	13.774	13195521	100.051 ug/ml
14) T n-Tetracosane (C24)	14.869	13130076	99.508 ug/ml
15) T n-Hexacosane (C26)	15.882	12839733	98.592 ug/ml
16) T n-Octacosane (C28)	16.824	12430525	97.012 ug/ml
17) T n-Tricontane (C30)	17.705	11659043	94.933 ug/ml
18) T n-Dotriacontane (C32)	18.528	10365804	93.741 ug/ml
19) T n-Tetratriacontane (C34)	19.304	8600527	95.521 ug/ml
20) T n-Hexatriacontane (C36)	20.035	7362333	92.900 ug/ml
21) T n-Octatriacontane (C38)	20.755	6748473	99.101 ug/ml
22) T n-Tetracontane (C40)	21.639	6848044	93.944 ug/ml

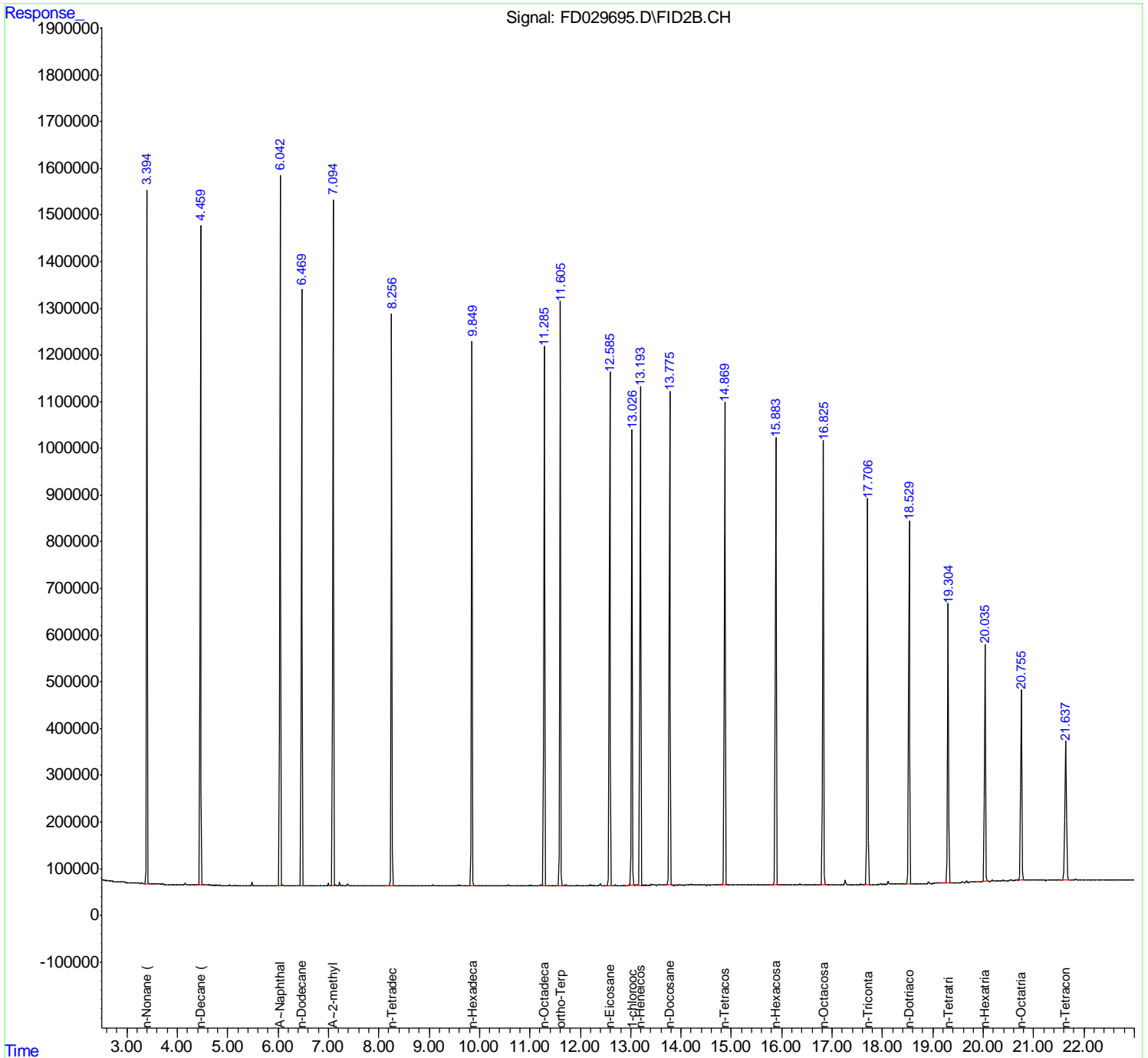
(f)=RT Delta > 1/2 Window

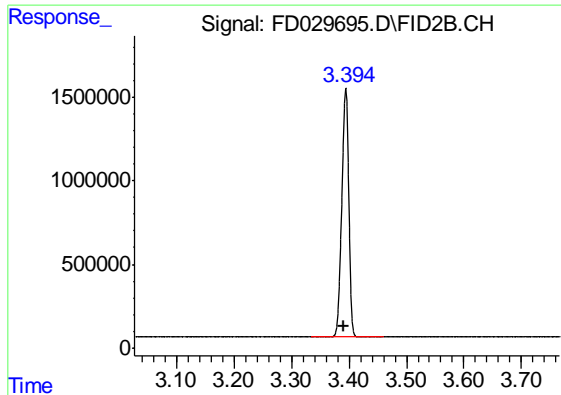
(m)=manual int.

Data Path : Z:\pestpcbsrv\HPCHEM1\FID\_D\Data\FD070919AL\  
 Data File : FD029695.D  
 Signal(s) : FID2B.CH  
 Acq On : 10 Jul 2019 3:23  
 Operator : DD\AJ  
 Sample : 100 PPM ALIPHATIC HC STD1  
 Misc :  
 ALS Vial : 2 Sample Multiplier: 1

Integration File: autoint1.e  
 Quant Time: Jul 10 07:36:48 2019  
 Quant Method : Z:\pestpcbsrv\HPCHEM1\FID\_D\methods\Aliphatic EPH 070919.M  
 Quant Title : GC Extractables  
 QLast Update : Wed Jul 10 07:33:17 2019  
 Response via : Initial Calibration  
 Integrator: ChemStation 6890 Scale Mode: Large solvent peaks clipped

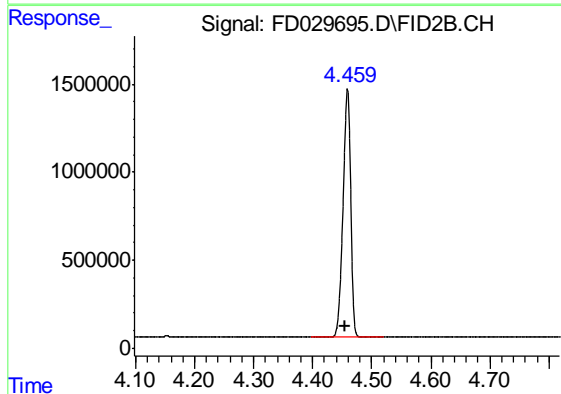
Volume Inj. : 1 ul  
 Signal Phase : Rxi-1ms  
 Signal Info : 20M x 0.18mm x 0.18um





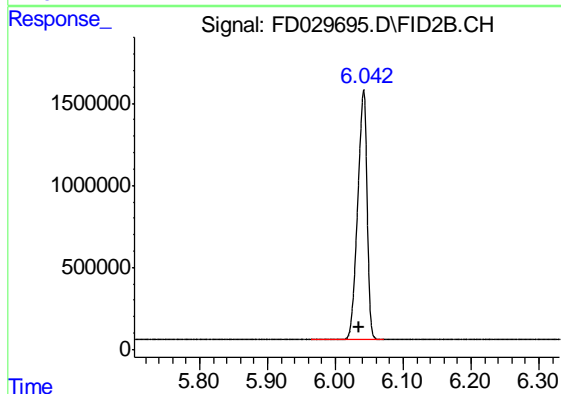
#1 n-Nonane (C9)

R.T.: 3.394 min  
Delta R.T.: 0.003 min  
Response: 12469925  
Conc: 101.16 ug/ml



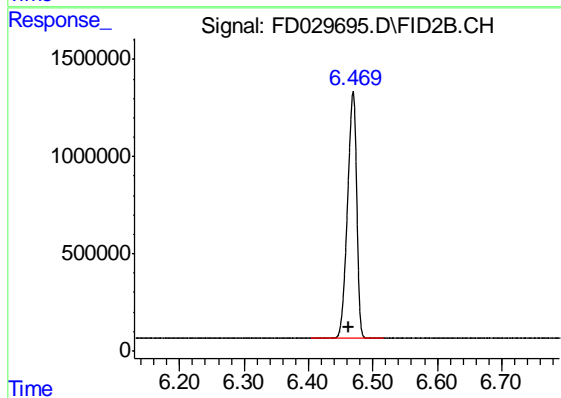
#2 n-Decane (C10)

R.T.: 4.459 min  
Delta R.T.: 0.005 min  
Response: 12697150  
Conc: 101.66 ug/ml



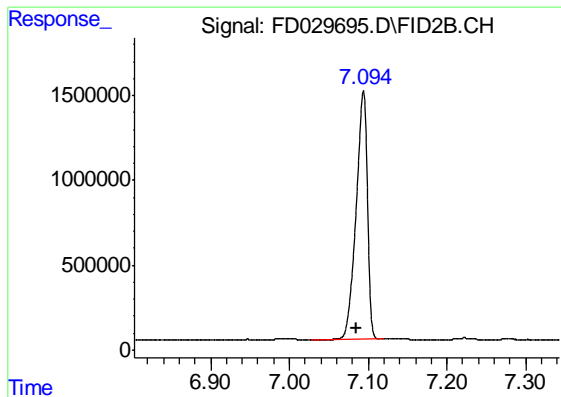
#3 A-Naphthalene (C11.7)

R.T.: 6.041 min  
Delta R.T.: 0.006 min  
Response: 14493197  
Conc: 102.01 ug/ml



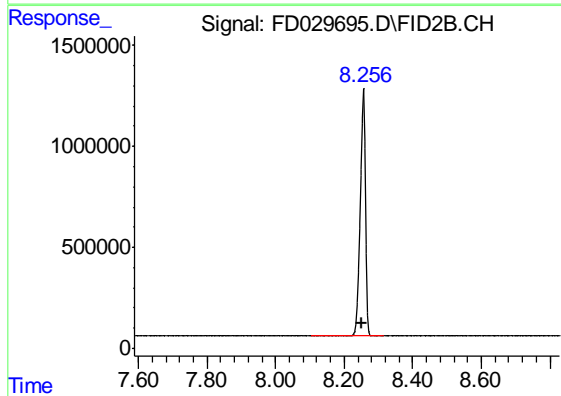
#4 n-Dodecane (C12)

R.T.: 6.469 min  
Delta R.T.: 0.006 min  
Response: 12695714  
Conc: 102.07 ug/ml



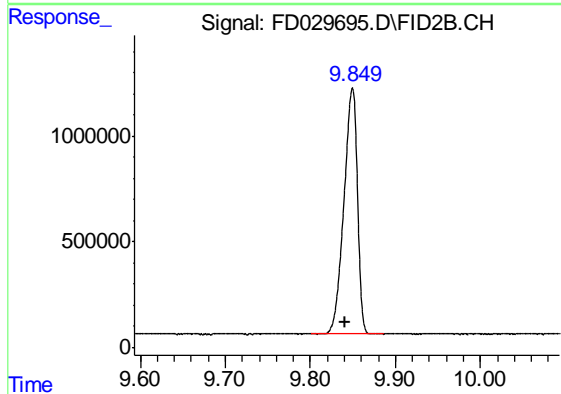
#5 A~2-methylnaphthalene (C12.89)

R.T.: 7.094 min  
 Delta R.T.: 0.008 min  
 Response: 14580797  
 Conc: 101.76 ug/ml



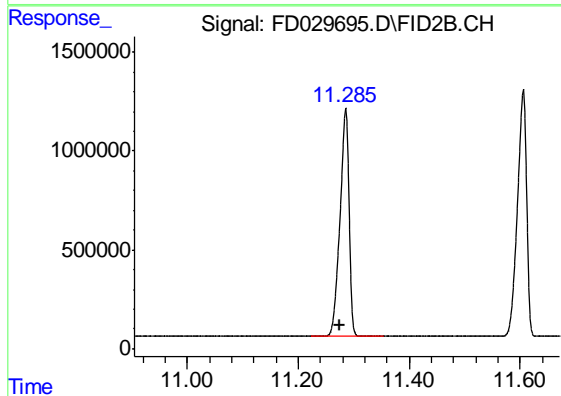
#6 n-Tetradecane (C14)

R.T.: 8.256 min  
 Delta R.T.: 0.007 min  
 Response: 12849903  
 Conc: 102.69 ug/ml



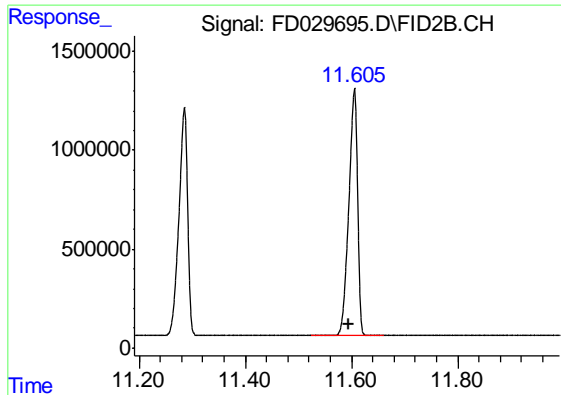
#7 n-Hexadecane (C16)

R.T.: 9.849 min  
 Delta R.T.: 0.008 min  
 Response: 12946435  
 Conc: 102.17 ug/ml



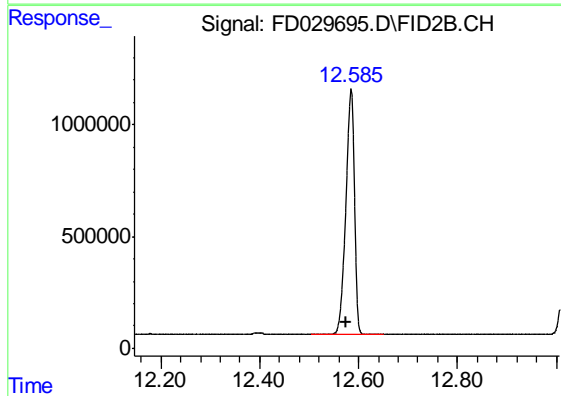
#8 n-Octadecane (C18)

R.T.: 11.285 min  
 Delta R.T.: 0.010 min  
 Response: 13095006  
 Conc: 101.19 ug/ml



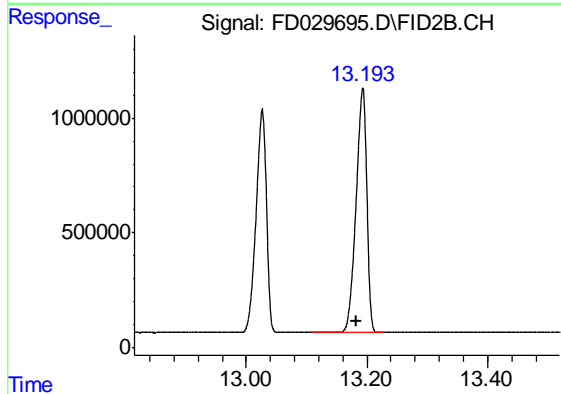
#9 ortho-Terphenyl (SURR)

R.T.: 11.605 min  
Delta R.T.: 0.011 min  
Response: 14306633  
Conc: 101.84 ug/ml



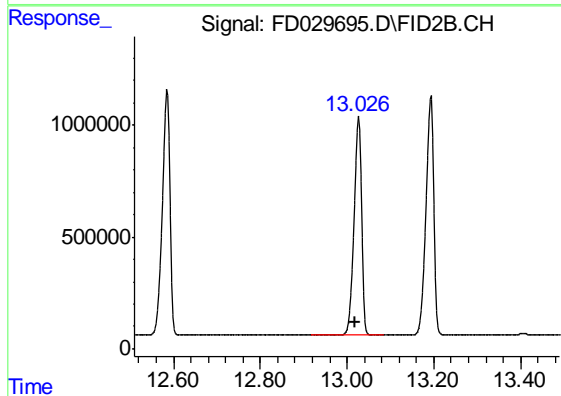
#10 n-Eicosane (C20)

R.T.: 12.585 min  
Delta R.T.: 0.008 min  
Response: 13233837  
Conc: 100.74 ug/ml



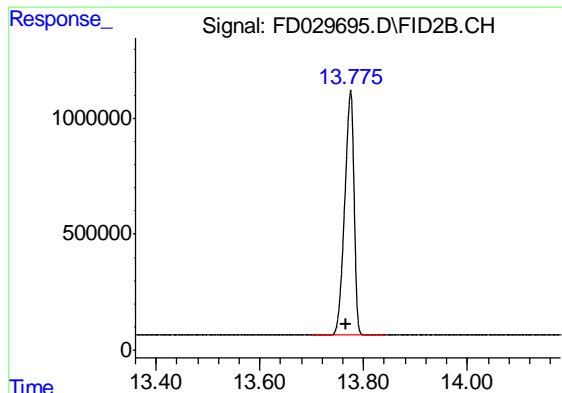
#11 n-Heneicosane (C21)

R.T.: 13.193 min  
Delta R.T.: 0.010 min  
Response: 13197021  
Conc: 100.59 ug/ml



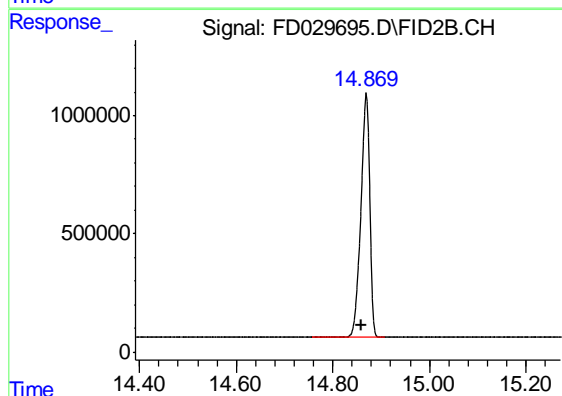
#12 1-chlorooctadecane (SURR)

R.T.: 13.026 min  
Delta R.T.: 0.009 min  
Response: 11665135  
Conc: 101.09 ug/ml



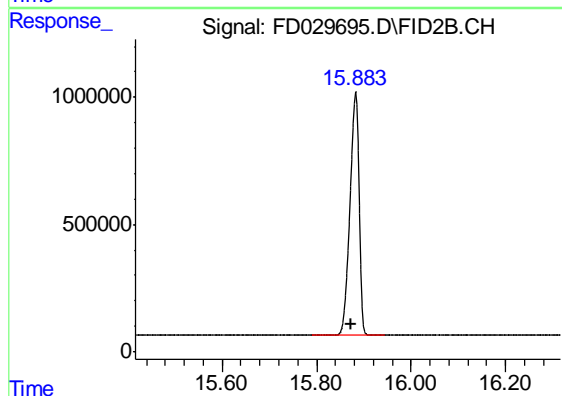
#13 n-Docosane (C22)

R.T.: 13.774 min  
Delta R.T.: 0.009 min  
Response: 13195521  
Conc: 100.05 ug/ml



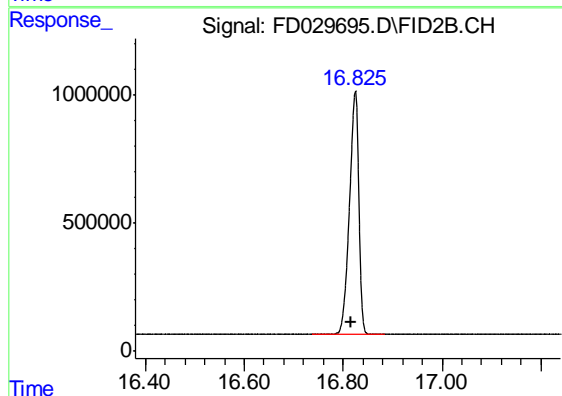
#14 n-Tetracosane (C24)

R.T.: 14.869 min  
Delta R.T.: 0.009 min  
Response: 13130076  
Conc: 99.51 ug/ml



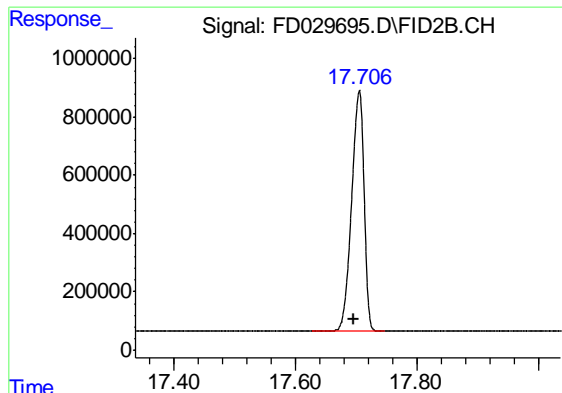
#15 n-Hexacosane (C26)

R.T.: 15.882 min  
Delta R.T.: 0.009 min  
Response: 12839733  
Conc: 98.59 ug/ml



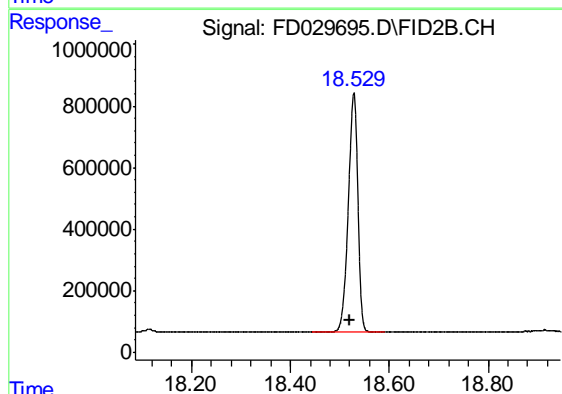
#16 n-Octacosane (C28)

R.T.: 16.824 min  
Delta R.T.: 0.009 min  
Response: 12430525  
Conc: 97.01 ug/ml



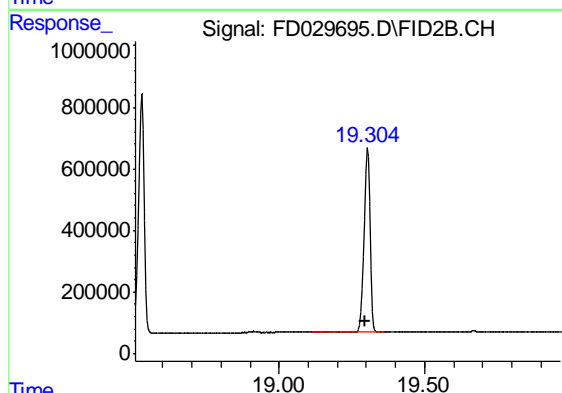
#17 n-Tricontane (C30)

R.T.: 17.705 min  
Delta R.T.: 0.008 min  
Response: 11659043  
Conc: 94.93 ug/ml



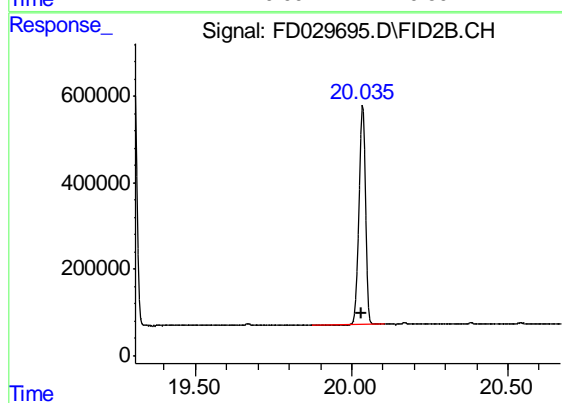
#18 n-Dotriacontane (C32)

R.T.: 18.528 min  
Delta R.T.: 0.007 min  
Response: 10365804  
Conc: 93.74 ug/ml



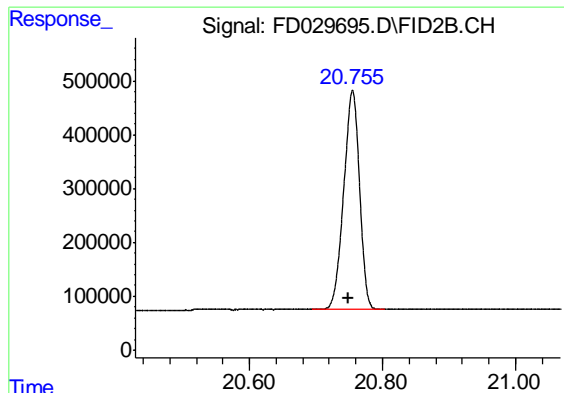
#19 n-Tetratriacontane (C34)

R.T.: 19.304 min  
Delta R.T.: 0.007 min  
Response: 8600527  
Conc: 95.52 ug/ml



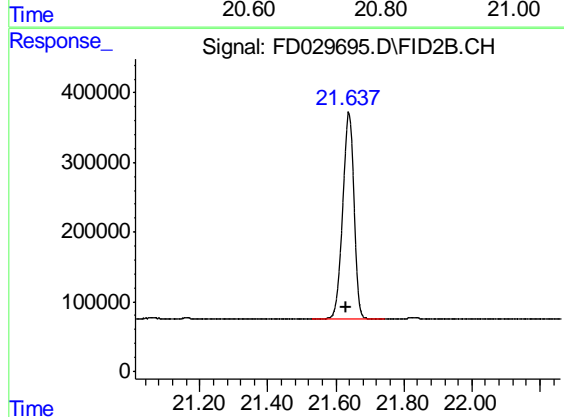
#20 n-Hexatriacontane (C36)

R.T.: 20.035 min  
Delta R.T.: 0.006 min  
Response: 7362333  
Conc: 92.90 ug/ml



#21 n-Octatriacontane (C38)

R.T.: 20.755 min  
Delta R.T.: 0.007 min  
Response: 6748473  
Conc: 99.10 ug/ml



#22 n-Tetracontane (C40)

R.T.: 21.639 min  
Delta R.T.: 0.008 min  
Response: 6848044  
Conc: 93.94 ug/ml