

Data Path : Z:\pestpcbsrv\HPCHEM1\FID_D\Data\FD071322AL\
Data File : FD043237.D
Signal(s) : FID2B.ch
Acq On : 13 Jul 2022 15:56
Operator : YP/AJ
Sample : I.BLK
Misc :
ALS Vial : 51 Sample Multiplier: 1

Integration File: autoint1.e
Quant Time: Jul 14 02:16:30 2022
Quant Method : Z:\pestpcbsrv\HPCHEM1\FID_D\methods\Aliphatic EPH 062422.M
Quant Title : GC Extractables
QLast Update : Wed Jul 13 08:30:44 2022
Response via : Initial Calibration
Integrator: ChemStation

Volume Inj. : 1 ul
Signal Phase : Rxi-1ms
Signal Info : 20M x 0.18mm x 0.18um

Compound	R.T.	Response	Conc Units
----------	------	----------	------------

System Monitoring Compounds

Target Compounds

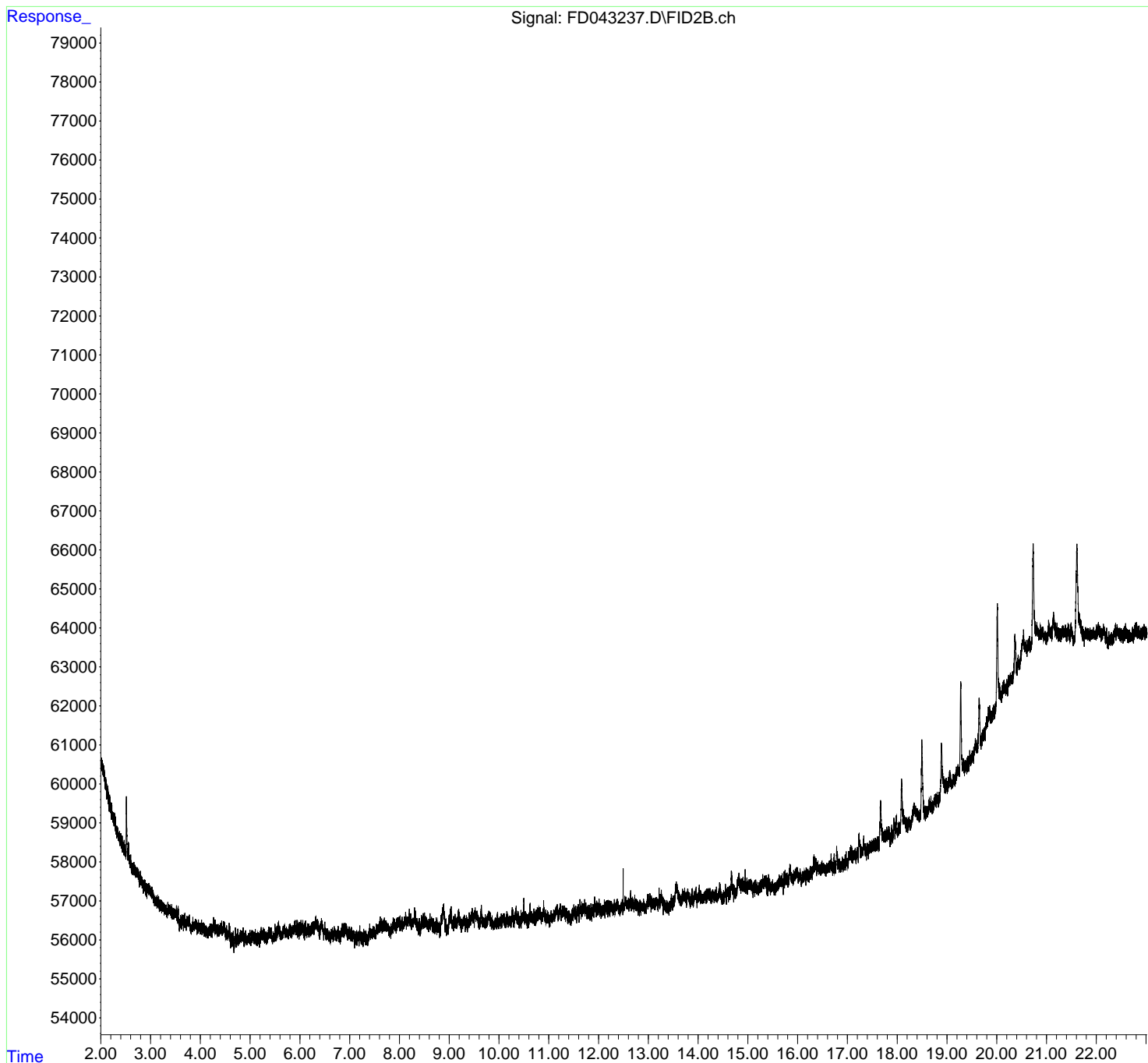
(f)=RT Delta > 1/2 Window

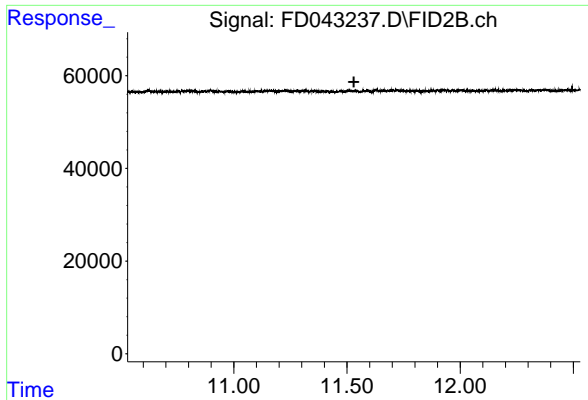
(m)=manual int.

Data Path : Z:\pestpcbsrv\HPCHEM1\FID_D\Data\FD071322AL\
 Data File : FD043237.D
 Signal(s) : FID2B.ch
 Acq On : 13 Jul 2022 15:56
 Operator : YP/AJ
 Sample : I.BLK
 Misc :
 ALS Vial : 51 Sample Multiplier: 1

Integration File: autoint1.e
 Quant Time: Jul 14 02:16:30 2022
 Quant Method : Z:\pestpcbsrv\HPCHEM1\FID_D\methods\Aliphatic EPH 062422.M
 Quant Title : GC Extractables
 QLast Update : Wed Jul 13 08:30:44 2022
 Response via : Initial Calibration
 Integrator: ChemStation

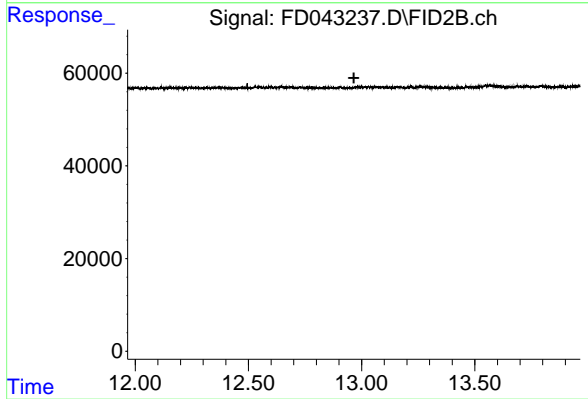
Volume Inj. : 1 ul
 Signal Phase : Rxi-1ms
 Signal Info : 20M x 0.18mm x 0.18um





#9 ortho-Terphenyl (SURR)

R.T.: 0.000 min
Exp R.T. : 11.531 min
Response: 0
Conc: N.D.



#12 1-chlorooctadecane (SURR)

R.T.: 0.000 min
Exp R.T. : 12.966 min
Response: 0
Conc: N.D.