

Data Path : Z:\pestpcbsrv\HPCHEM1\FID_D\Data\FD071620AR\
 Data File : FD034018.D
 Signal(s) : FID2B.CH
 Acq On : 16 Jul 2020 21:25
 Operator : DD\AJ
 Sample : L3308-04
 Misc :
 ALS Vial : 62 Sample Multiplier: 1

Integration File: autoint1.e
 Quant Time: Jul 17 02:56:18 2020
 Quant Method : Z:\pestpcbsrv\HPCHEM1\FID_D\methods\Aromatic EPH 070820.M
 Quant Title : GC Extractables
 QLast Update : Wed Jul 08 06:32:19 2020
 Response via : Initial Calibration
 Integrator: ChemStation 6890 Scale Mode: Large solvent peaks clipped

Volume Inj. : 1 µl
 Signal Phase : Rxi-1ms
 Signal Info : 20M x 0.18mm x 0.18µm

Compound	R.T.	Response	Conc Units
System Monitoring Compounds			
4) S 2-Bromonaphthalene (S...	7.713	5290416	44.047 ug/ml
Spiked Amount 50.000		Recovery =	88.09%
6) S 2-Fluorobiphenyl (SURR)	8.578	3688884	43.522 ug/ml
Spiked Amount 50.000 Range 0 - 131		Recovery =	87.04%
11) S ortho-Terphenyl (SURR)	11.618	3375060	24.946 ug/ml
Spiked Amount 50.000		Recovery =	49.89%

Target Compounds

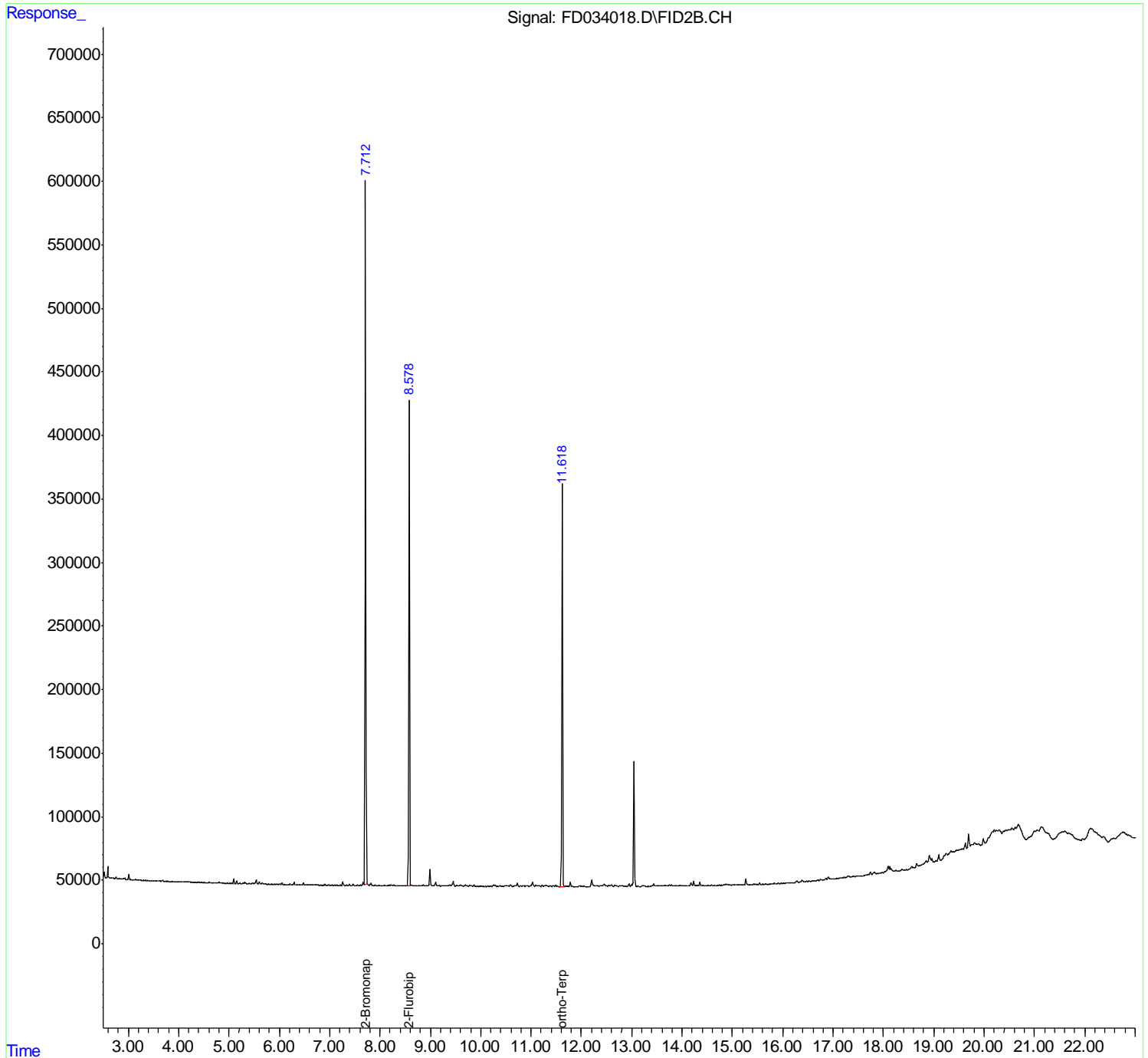
(f)=RT Delta > 1/2 Window

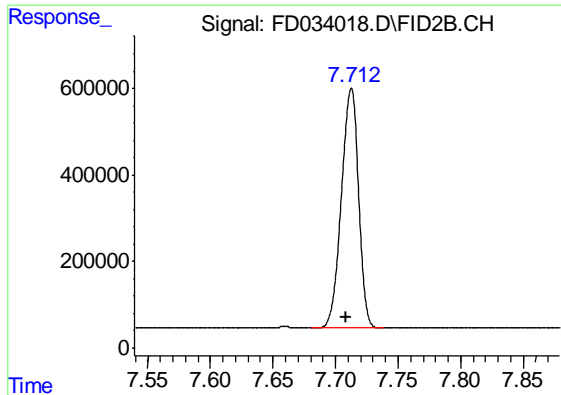
(m)=manual int.

Data Path : Z:\pestpcbsrv\HPCHEM1\FID_D\Data\FD071620AR\
Data File : FD034018.D
Signal(s) : FID2B.CH
Acq On : 16 Jul 2020 21:25
Operator : DD\AJ
Sample : L3308-04
Misc :
ALS Vial : 62 Sample Multiplier: 1

Integration File: autoint1.e
Quant Time: Jul 17 02:56:18 2020
Quant Method : Z:\pestpcbsrv\HPCHEM1\FID_D\methods\Aromatic EPH 070820.M
Quant Title : GC Extractables
QLast Update : Wed Jul 08 06:32:19 2020
Response via : Initial Calibration
Integrator: ChemStation 6890 Scale Mode: Large solvent peaks clipped

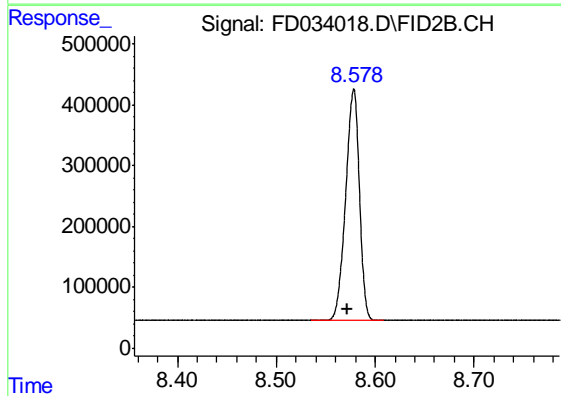
Volume Inj. : 1 µl
Signal Phase : Rxi-1ms
Signal Info : 20M x 0.18mm x 0.18µm





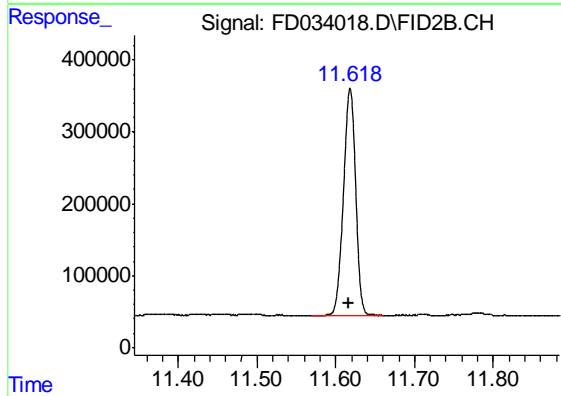
#4 2-Bromonaphthalene (SURR)

R.T.: 7.713 min
Delta R.T.: 0.004 min
Response: 5290416
Conc: 44.05 ug/ml



#6 2-Fluorobiphenyl (SURR)

R.T.: 8.578 min
Delta R.T.: 0.006 min
Response: 3688884
Conc: 43.52 ug/ml



#11 ortho-Terphenyl (SURR)

R.T.: 11.618 min
Delta R.T.: 0.002 min
Response: 3375060
Conc: 24.95 ug/ml