

Data Path : Z:\pestpcbsrv\HPCHEM1\FID_D\Data\FD071620AR\
 Data File : FD034024.D
 Signal(s) : FID2B.CH
 Acq On : 17 Jul 2020 1:02
 Operator : DD\AJ
 Sample : L3308-10
 Misc :
 ALS Vial : 68 Sample Multiplier: 1

Integration File: autoint1.e
 Quant Time: Jul 17 02:57:16 2020
 Quant Method : Z:\pestpcbsrv\HPCHEM1\FID_D\methods\Aromatic EPH 070820.M
 Quant Title : GC Extractables
 QLast Update : Wed Jul 08 06:32:19 2020
 Response via : Initial Calibration
 Integrator: ChemStation 6890 Scale Mode: Large solvent peaks clipped

Volume Inj. : 1 µl
 Signal Phase : Rxi-1ms
 Signal Info : 20M x 0.18mm x 0.18µm

Compound	R.T.	Response	Conc Units
System Monitoring Compounds			
4) S 2-Bromonaphthalene (S...	7.714	7942378	66.126 ug/ml
Spiked Amount 50.000		Recovery =	132.25%
6) S 2-Fluorobiphenyl (SURR)	8.580	5538596	65.345 ug/ml
Spiked Amount 50.000 Range 0 - 131		Recovery =	130.69%
11) S ortho-Terphenyl (SURR)	11.619	5013162	37.054 ug/ml
Spiked Amount 50.000		Recovery =	74.11%

Target Compounds

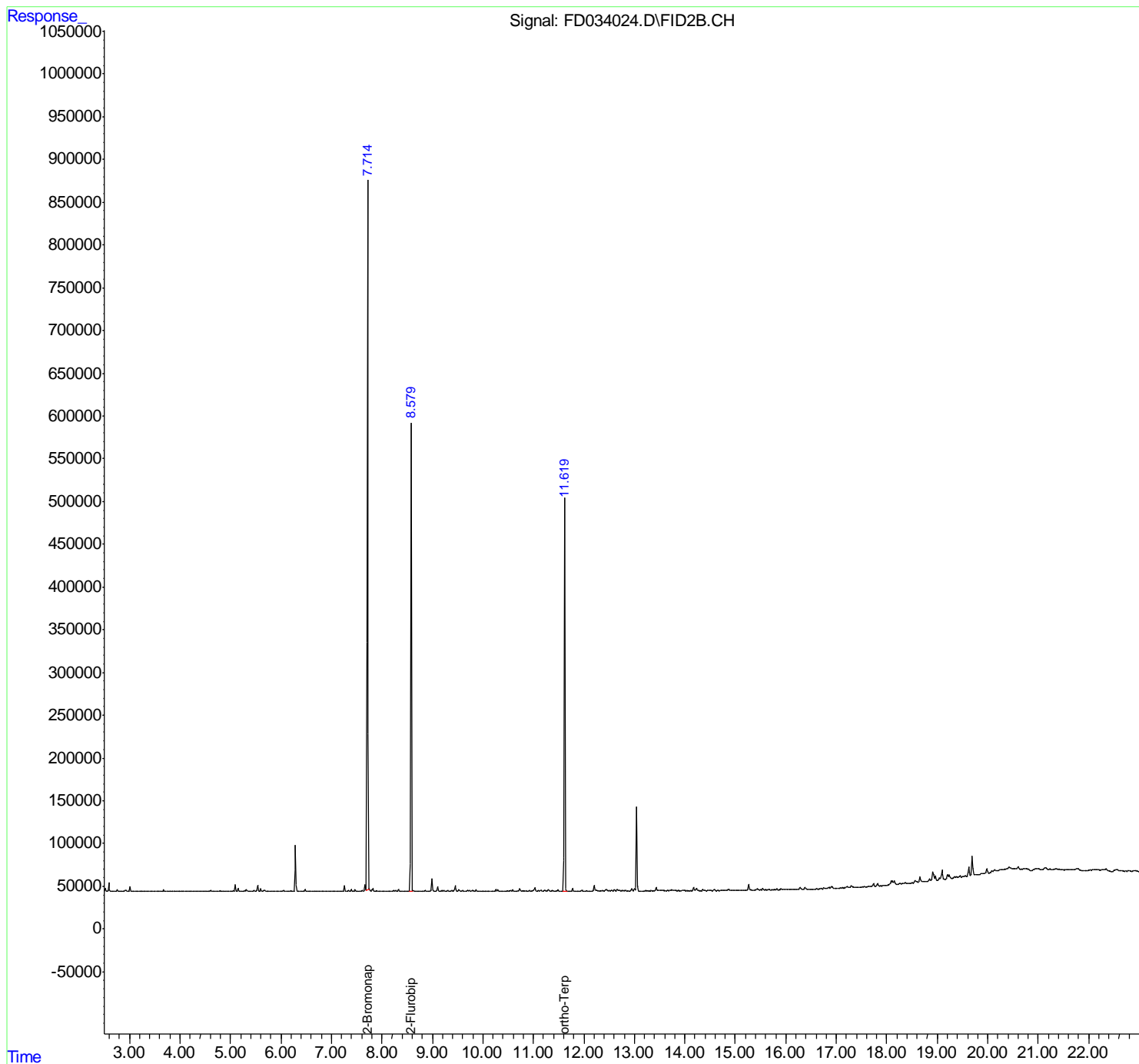
(f)=RT Delta > 1/2 Window

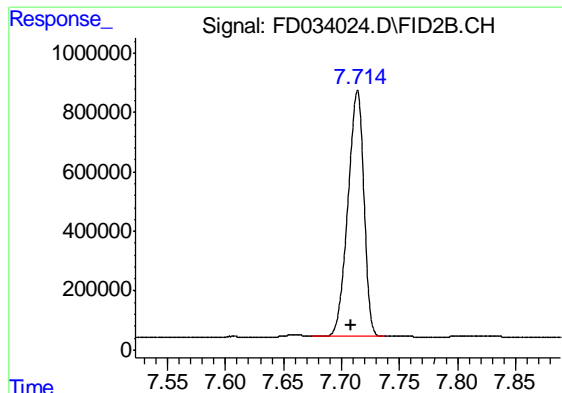
(m)=manual int.

Data Path : Z:\pestpcbsrv\HPCHEM1\FID_D\Data\FD071620AR\
Data File : FD034024.D
Signal(s) : FID2B.CH
Acq On : 17 Jul 2020 1:02
Operator : DD\AJ
Sample : L3308-10
Misc :
ALS Vial : 68 Sample Multiplier: 1

Integration File: autoint1.e
Quant Time: Jul 17 02:57:16 2020
Quant Method : Z:\pestpcbsrv\HPCHEM1\FID_D\methods\Aromatic EPH 070820.M
Quant Title : GC Extractables
QLast Update : Wed Jul 08 06:32:19 2020
Response via : Initial Calibration
Integrator: ChemStation 6890 Scale Mode: Large solvent peaks clipped

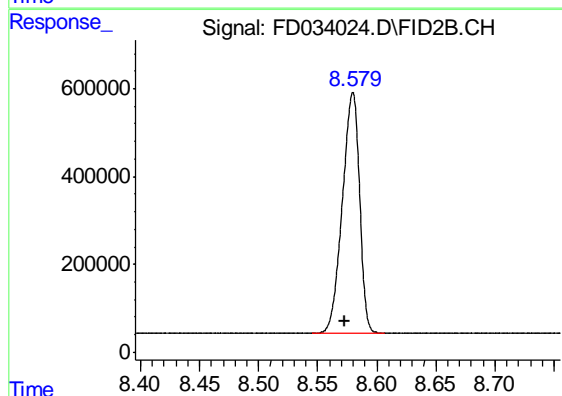
Volume Inj. : 1 µl
Signal Phase : Rxi-1ms
Signal Info : 20M x 0.18mm x 0.18µm





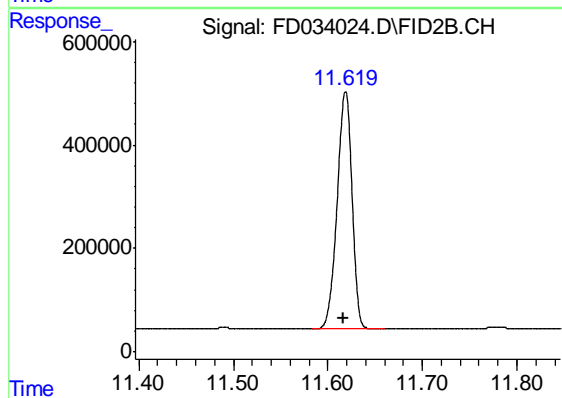
#4 2-Bromonaphthalene (SURR)

R.T.: 7.714 min
Delta R.T.: 0.005 min
Response: 7942378
Conc: 66.13 ug/ml



#6 2-Fluorobiphenyl (SURR)

R.T.: 8.580 min
Delta R.T.: 0.007 min
Response: 5538596
Conc: 65.35 ug/ml



#11 ortho-Terphenyl (SURR)

R.T.: 11.619 min
Delta R.T.: 0.003 min
Response: 5013162
Conc: 37.05 ug/ml