

Data Path : Z:\pestpcbsrv\HPCHEM1\FID_D\Data\FD071620AR\
 Data File : FD034029.D
 Signal(s) : FID2B.CH
 Acq On : 17 Jul 2020 4:00
 Operator : DD\AJ
 Sample : 20 PPM AROMATIC HC STD
 Misc :
 ALS Vial : 52 Sample Multiplier: 1

Integration File: autoint1.e
 Quant Time: Jul 17 05:47:12 2020
 Quant Method : Z:\pestpcbsrv\HPCHEM1\FID_D\methods\Aromatic EPH 070820.M
 Quant Title : GC Extractables
 QLast Update : Wed Jul 08 06:32:19 2020
 Response via : Initial Calibration
 Integrator: ChemStation 6890 Scale Mode: Large solvent peaks clipped

Volume Inj. : 1 µl
 Signal Phase : Rxi-1ms
 Signal Info : 20M x 0.18mm x 0.18µm

Compound	R.T.	Response	Conc Units
System Monitoring Compounds			
4) S 2-Bromonaphthalene (S...	7.710	2334631	19.438 ug/ml
Spiked Amount 50.000		Recovery =	38.88%
6) S 2-Fluorobiphenyl (SURR)	8.575	1606837	18.958 ug/ml
Spiked Amount 50.000 Range 0 - 131		Recovery =	37.92%
11) S ortho-Terphenyl (SURR)	11.617	2491694	18.417 ug/ml
Spiked Amount 50.000		Recovery =	36.83%
Target Compounds			
1) T 1,2,3-Trimethylbenzen...	4.504	2655896	20.109 ug/ml
2) T Naphthalene (C11.7)	6.048	2726910	19.687 ug/ml
3) T 2-Methylnaphthalene (...)	7.101	2708976	19.451 ug/ml
5) T Acenaphthylene (C15.06)	8.378	2538662	18.883 ug/ml
7) T Acenaphthene (C15.5)	8.674	2597547	18.978 ug/ml
8) T Fluorene (C16.55)	9.455	2521216	18.751 ug/ml
9) T Phenanthrene (C19.36)	10.852	2458096	18.393 ug/ml
10) T Anthracene (C19.43)	10.927	2325187	17.523 ug/ml
12) T Fluoranthene (C21.85)	12.664	2351008	17.696 ug/ml
13) T Pyrene (C20.8)	12.962	2274053	17.542 ug/ml
14) T Benzo[a]anthracene (C...	14.831	2152527	17.291 ug/ml
15) T Chrysene (C27.41)	14.874	2161977	17.409 ug/ml
16) T benzo[b]fluoranthene ...	16.378	2114884	17.776 ug/ml
17) T Bnezo[k]fluoranthene ...	16.411	2057351	17.755 ug/ml
18) T Benzo[a]pyrene (C31.34)	16.758	2093382	17.989 ug/ml
19) T Indeno[1,2,3-cd]pyren...	18.120	2094543	18.812 ug/ml
20) T Dibenz[a,h]anthracene...	18.158	2144221	19.407 ug/ml
21) T Benzo[g,h,i]perylene ...	18.375	2109325	19.101 ug/ml

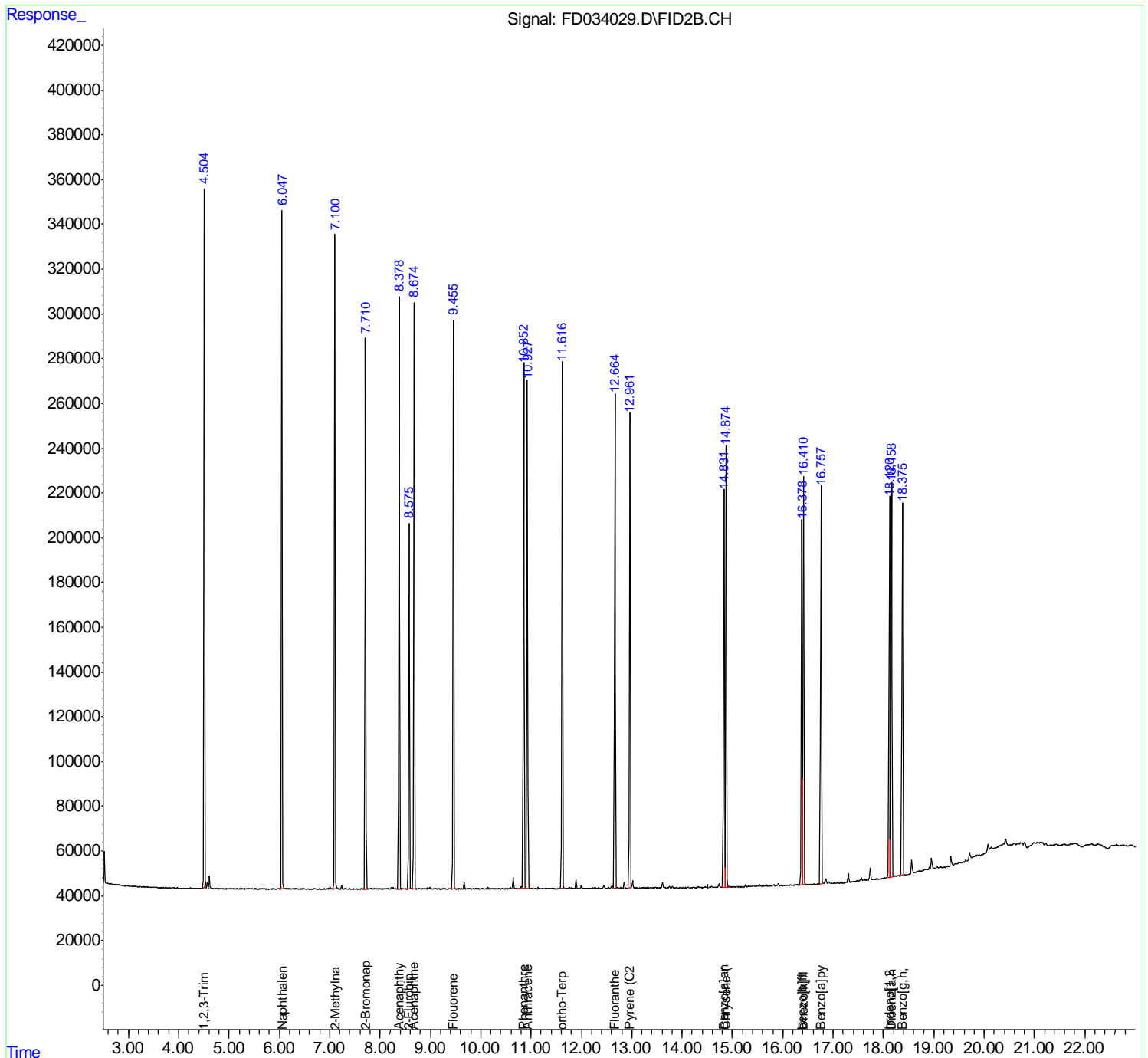
(f)=RT Delta > 1/2 Window

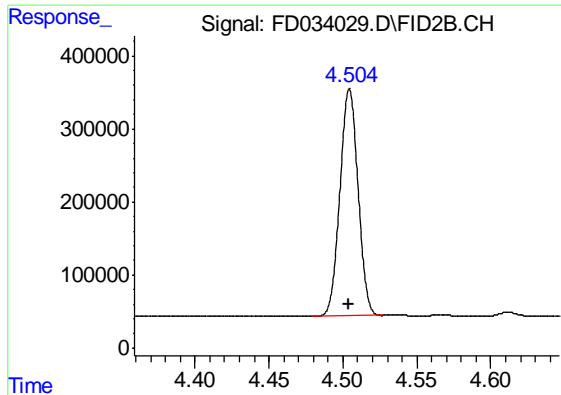
(m)=manual int.

Data Path : Z:\pestpcbsrv\HPCHEM1\FID_D\Data\FD071620AR\
 Data File : FD034029.D
 Signal(s) : FID2B.CH
 Acq On : 17 Jul 2020 4:00
 Operator : DD\AJ
 Sample : 20 PPM AROMATIC HC STD
 Misc :
 ALS Vial : 52 Sample Multiplier: 1

Integration File: autoint1.e
 Quant Time: Jul 17 05:47:12 2020
 Quant Method : Z:\pestpcbsrv\HPCHEM1\FID_D\methods\Aromatic EPH 070820.M
 Quant Title : GC Extractables
 QLast Update : Wed Jul 08 06:32:19 2020
 Response via : Initial Calibration
 Integrator: ChemStation 6890 Scale Mode: Large solvent peaks clipped

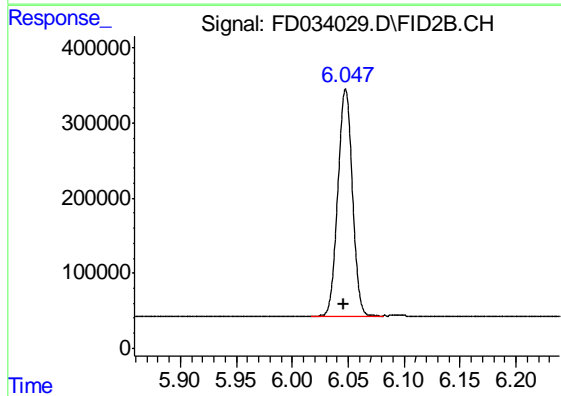
Volume Inj. : 1 µl
 Signal Phase : Rxi-1ms
 Signal Info : 20M x 0.18mm x 0.18µm





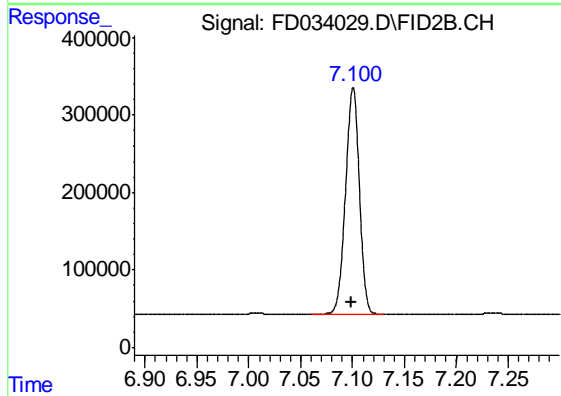
#1 1,2,3-Trimethylbenzene (C10.1)

R.T.: 4.504 min
Delta R.T.: 0.000 min
Response: 2655896
Conc: 20.11 ug/ml



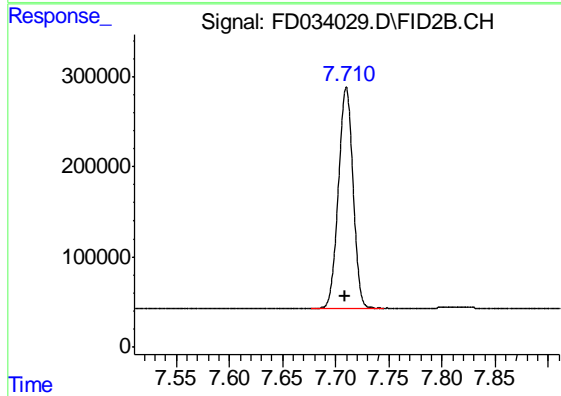
#2 Naphthalene (C11.7)

R.T.: 6.048 min
Delta R.T.: 0.002 min
Response: 2726910
Conc: 19.69 ug/ml



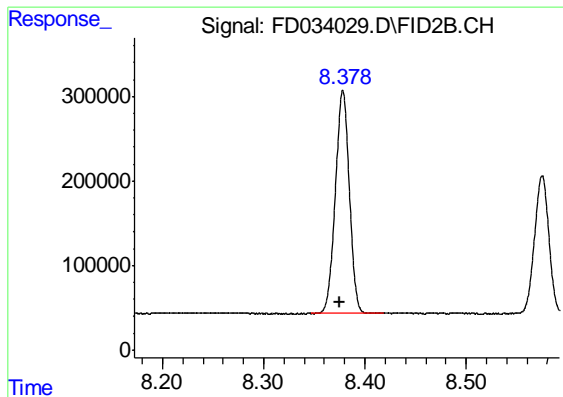
#3 2-Methylnaphthalene (C12.89)

R.T.: 7.101 min
Delta R.T.: 0.002 min
Response: 2708976
Conc: 19.45 ug/ml



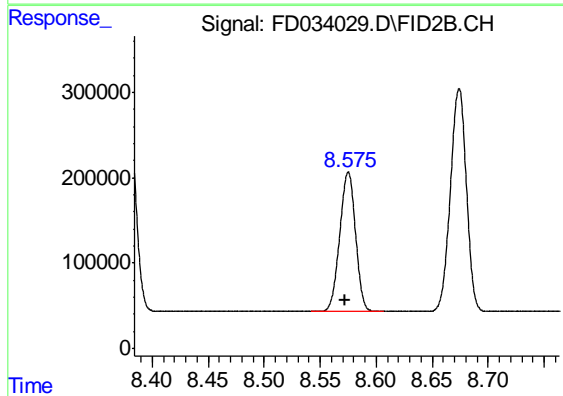
#4 2-Bromonaphthalene (SURR)

R.T.: 7.710 min
Delta R.T.: 0.001 min
Response: 2334631
Conc: 19.44 ug/ml



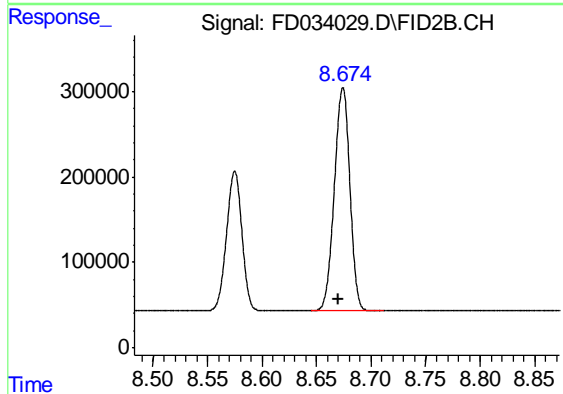
#5 Acenaphthylene (C15.06)

R.T.: 8.378 min
Delta R.T.: 0.003 min
Response: 2538662
Conc: 18.88 ug/ml



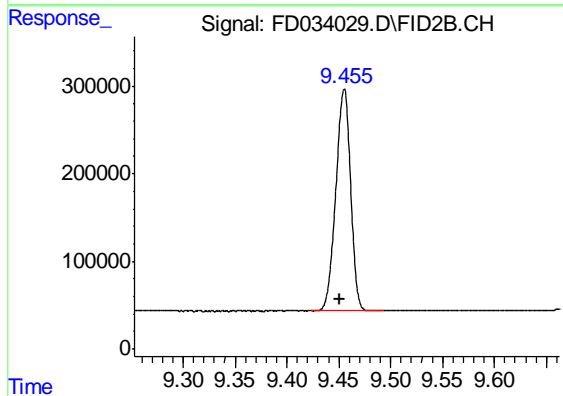
#6 2-Fluorobiphenyl (SURR)

R.T.: 8.575 min
Delta R.T.: 0.003 min
Response: 1606837
Conc: 18.96 ug/ml



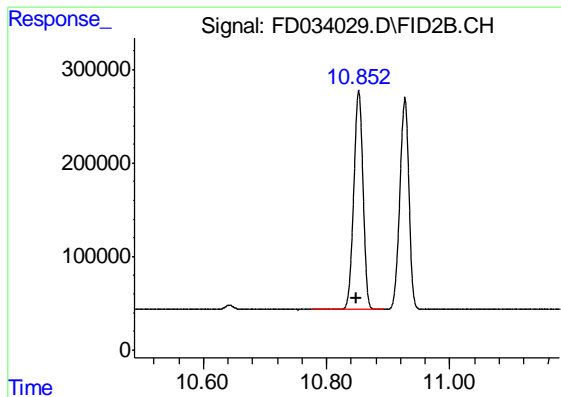
#7 Acenaphthene (C15.5)

R.T.: 8.674 min
Delta R.T.: 0.003 min
Response: 2597547
Conc: 18.98 ug/ml



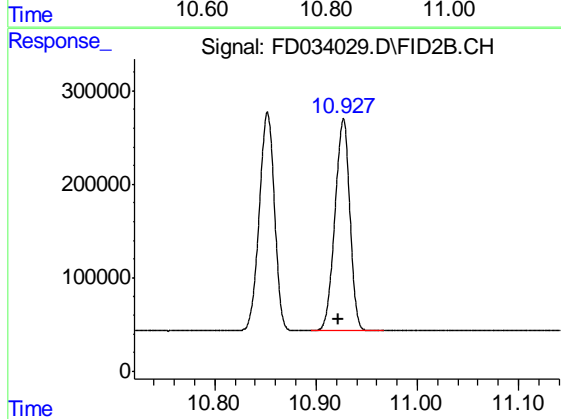
#8 Fluorene (C16.55)

R.T.: 9.455 min
Delta R.T.: 0.004 min
Response: 2521216
Conc: 18.75 ug/ml



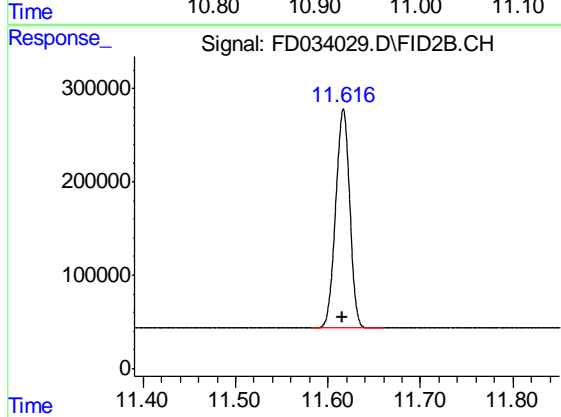
#9 Phenanthrene (C19.36)

R.T.: 10.852 min
Delta R.T.: 0.003 min
Response: 2458096
Conc: 18.39 ug/ml



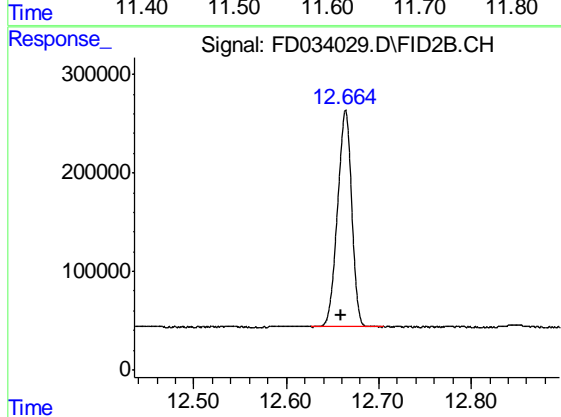
#10 Anthracene (C19.43)

R.T.: 10.927 min
Delta R.T.: 0.004 min
Response: 2325187
Conc: 17.52 ug/ml



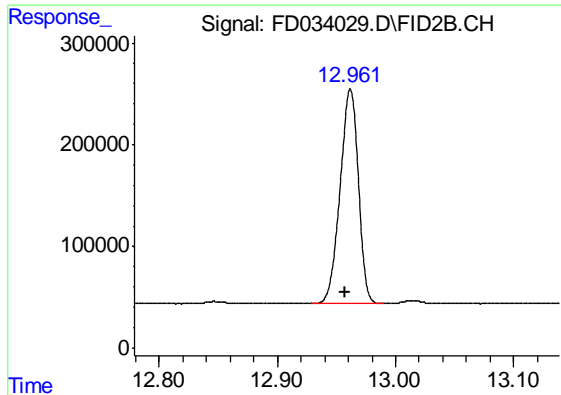
#11 ortho-Terphenyl (SURRE)

R.T.: 11.617 min
Delta R.T.: 0.000 min
Response: 2491694
Conc: 18.42 ug/ml

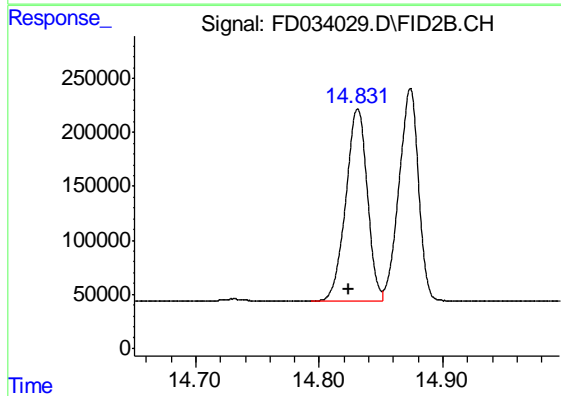


#12 Fluoranthene (C21.85)

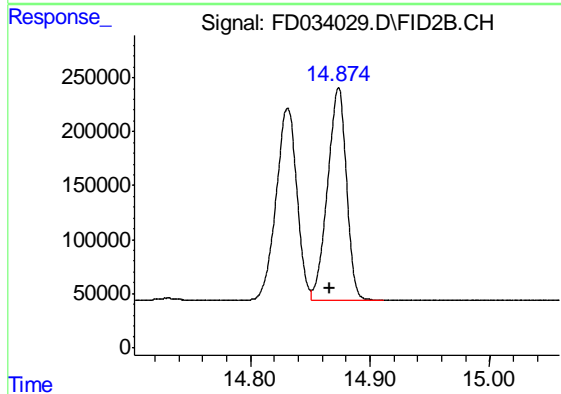
R.T.: 12.664 min
Delta R.T.: 0.005 min
Response: 2351008
Conc: 17.70 ug/ml



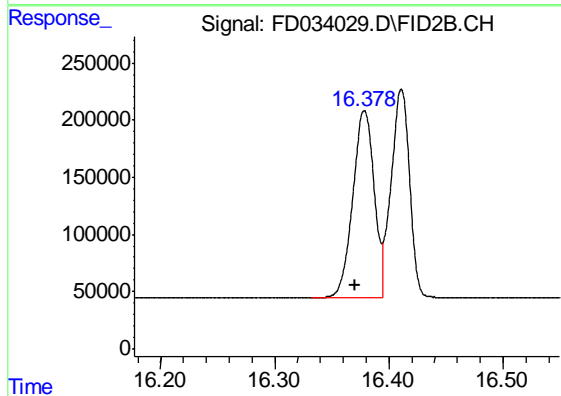
#13 Pyrene (C20.8)
R.T.: 12.962 min
Delta R.T.: 0.005 min
Response: 2274053
Conc: 17.54 ug/ml



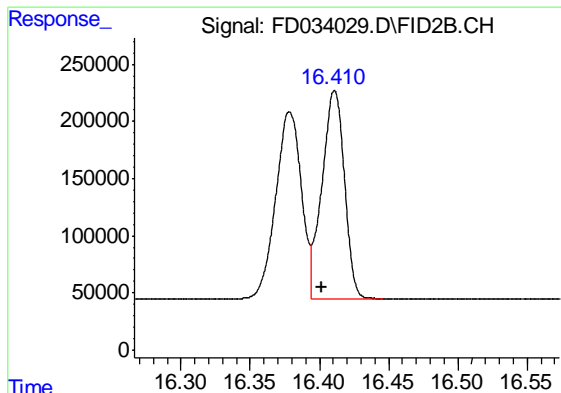
#14 Benzo[a]anthracene (C26.37)
R.T.: 14.831 min
Delta R.T.: 0.007 min
Response: 2152527
Conc: 17.29 ug/ml



#15 Chrysene (C27.41)
R.T.: 14.874 min
Delta R.T.: 0.008 min
Response: 2161977
Conc: 17.41 ug/ml

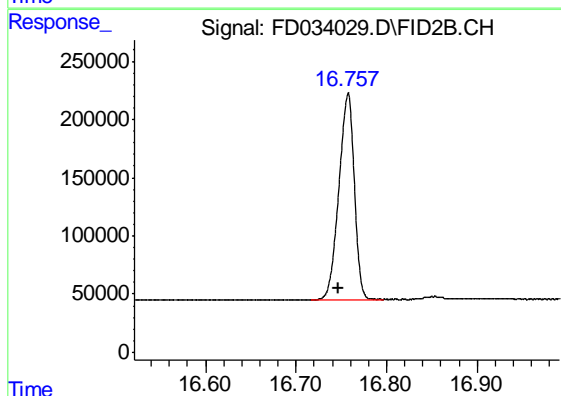


#16 benzo[b]fluoranthene (C30.41)
R.T.: 16.378 min
Delta R.T.: 0.008 min
Response: 2114884
Conc: 17.78 ug/ml



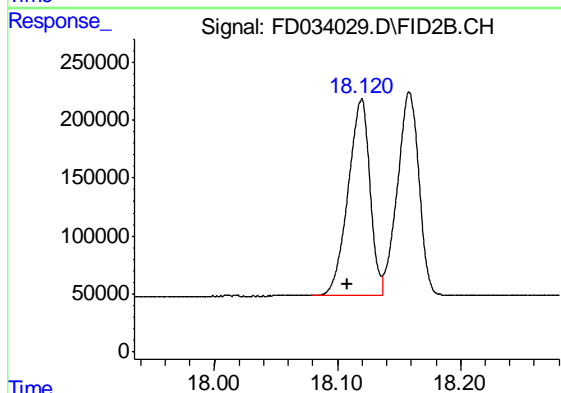
#17 Bnezo[k]fluoranthene (C30.14)

R.T.: 16.411 min
Delta R.T.: 0.009 min
Response: 2057351
Conc: 17.76 ug/ml



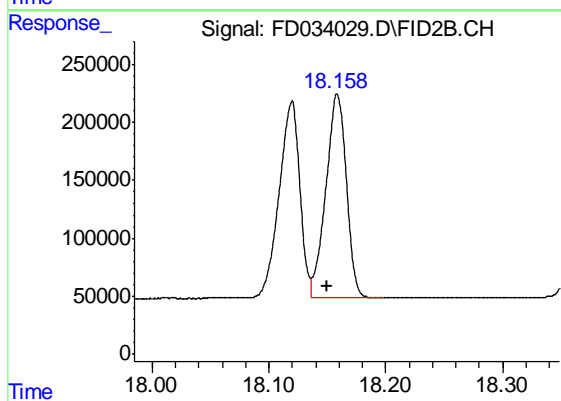
#18 Benzo[a]pyrene (C31.34)

R.T.: 16.758 min
Delta R.T.: 0.010 min
Response: 2093382
Conc: 17.99 ug/ml



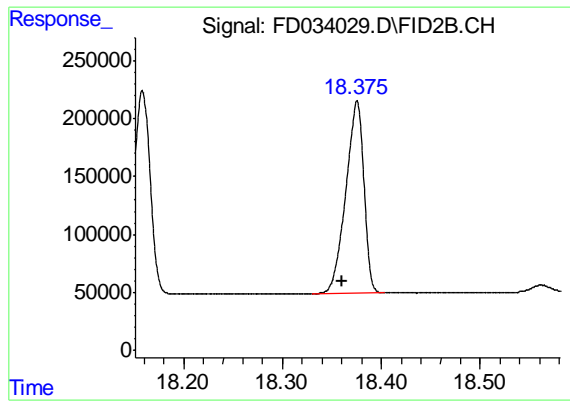
#19 Indeno[1,2,3-cd]pyrene (C35.01)

R.T.: 18.120 min
Delta R.T.: 0.011 min
Response: 2094543
Conc: 18.81 ug/ml



#20 Dibenz[a,h]anthracene (C30.36)

R.T.: 18.158 min
Delta R.T.: 0.009 min
Response: 2144221
Conc: 19.41 ug/ml



#21 Benzo[g,h,i]perylene (C34.01)

R.T.: 18.375 min
Delta R.T.: 0.015 min
Response: 2109325
Conc: 19.10 ug/ml